

Drug-caused deaths in Western Australia, 1984 - 1994

Elizabeth Unwin

Health Information Centre
Health Department of Western Australia

May 1996



Table of contents

Summary	1
Acknowledgments	1
1 Introduction	2
2 The aetiologic fraction methodology	2
2.1 Tobacco	2
2.2 Alcohol	2
2.3 Other drugs	3
3 Results and discussion	3
3.1 Overview	3
3.2 Age-standardised death rates	5
3.3 Age pattern of deaths	7
3.4 Smoking-caused deaths	7
3.5 Alcohol-caused deaths	7
3.6 Deaths caused by the use of other drugs	8
Endnotes	8
Appendix A	
Tables of aetiologic fractions	14
Appendix B	
Tables of cause-specific mortality by sex and drug group	21

List of tables

Table 1:	Estimated numbers of drug-caused deaths, by type of drug and year, Western Australia, 1984-1994	4
Table 2:	Estimated numbers of drug-caused deaths, by year, sex and type of drug, Western Australia, 1984-1994	4
Table 3:	Estimated age-standardised death rates, by year, sex and type of drug, Western Australia, 1984-1994	6
Table 4:	Estimated number of drug-caused deaths, by year and age group, Western Australia, 1984-1994	11
Table 7:	Estimated number of smoking-caused deaths, by sex and age group, Western Australia, 1984-1994	11
Table 5:	Estimated age-specific death rates, by type of drug, Western Australia, 19894-1994	12
Table 8:	Estimated number of alcohol-caused deaths, by sex and age group, Western Australia, 1984-1994	12
Table 9:	Estimated number of deaths caused by the use of other drugs, by sex and age group, Western Australia, 1984-1994	12
Table 6:	Estimated number of drug-caused deaths, by year, age group and type of drug	13
Table 10:	Estimated numbers of deaths caused by the use of other drugs, by year, sex and type of drug, Western Australia, 1984-1994	13

Appendix A

Tables of aetiologic fractions

Table A1:	Estimated age-specific aetiologic fractions for conditions in Australian males caused or prevented by tobacco	15
Table A2:	Estimated age-specific aetiologic fractions for conditions in Australian females caused or prevented by tobacco	16
Table A3:	Estimated age-specific aetiologic fractions for conditions in Australian males caused or prevented by alcohol	17
Table A4:	Estimated age-specific aetiologic fractions for conditions in Australian females caused or prevented by alcohol	18
Table A5:	Estimated age-specific aetiologic fractions for conditions in Australian males caused by other drug use	19
Table A6:	Estimated age-specific aetiologic fractions for conditions in Australian females caused by other drug use	20

Appendix B

Tables of cause-specific mortality by sex and drug group

Table B1:	Estimated number of smoking-caused deaths, by year and condition, Western Australia, 1984-1994	22
Table B2:	Estimated number of male smoking-caused deaths, by year and condition, Western Australia, 1984-1994	23
Table B3:	Estimated number of female smoking-caused deaths, by year and condition, Western Australia, 1984-1994	24
Table B4:	Estimated number of alcohol-caused deaths, by year and condition, Western Australia, 1984-1994	25
Table B5:	Estimated number of male alcohol-caused deaths, by year and condition, Western Australia, 1984-1994	26
Table B6:	Estimated number of female alcohol-caused deaths, by year and condition, Western Australia, 1984-1994	27

Table B7: Estimated number of deaths caused by other drug use, by year and condition, Western Australia, 1984-1994	28
Table B8: Estimated number of male deaths caused by other drug use, by year and condition, Western Australia, 1984-1994	29
Table B9: Estimated number of female deaths caused by other drug use, by year and condition, Western Australia, 1984-1994	30

List of figures

Figure 1: Proportions of drug-caused deaths by drug type, Western Australia, 1984-1994	4
Figure 3: Age-standardised rates for all drug-caused deaths, by sex and year, Western Australia, 1984-1994	6
Figure 4: Age-standardised rates for tobacco-caused deaths, by sex and year, Western Australia, 1984-1994	10
Figure 5: Age-standardised rates for alcohol-caused deaths, by sex and year, Western Australia, 1984-1994	10
Figure 7: Estimated numbers of drug-caused deaths, by age group and year, Western Australia, 1984-1994	11

Summary

Tobacco smoking, alcohol consumption and the use of other drugs caused an estimated 20,648 deaths in Western Australia over the period 1984 to 1994 (15,167 males; 5,481 females). This is an average of 1,877 deaths each year.

Tobacco smoking was responsible for 80% of all drug-caused deaths in Western Australia - an estimated 16,415 deaths (12,269 males; 4,146 females). This is an average of 1,492 deaths each year.

Alcohol use was responsible for 17% of all drug-caused deaths in Western Australia - an estimated 3,532 deaths (2,461 males; 1,071 females). This is an average of 321 deaths each year.

The use of drugs other than alcohol and tobacco was responsible for 3% of all drug-caused deaths in Western Australia - an estimated 701 deaths (437 males; 264 females). This is an average of 64 deaths each year.

The annual number of drug-caused deaths increased slightly over the period 1984 to 1994, but the age-standardised death rates decreased, by 25% for males and by 12% for females. This reflects the trend for smoking-caused death rates, which decreased by 28% for males and 16% for females. Male age-standardised rates for alcohol-caused deaths decreased by 21% over the period, but the female rates showed no change. The age-standardised rates for deaths caused by other drugs, although low, increased, especially at the end of the period studied. From 1991 to 1994 rates for deaths caused by other drugs increased by 71% (76% for males; 63% for females).

Age-specific rates for smoking-caused deaths increased with age, as did those for alcohol-caused deaths, although for alcohol there was also a minor peak among young adults. In contrast, age-specific rates for deaths caused by the use of other drugs were highest between the ages of 20 and 39 years.

Acknowledgments

The production of this report involved valuable assistance from Greg Swensen at the Taskforce on Drug Abuse. Greg wrote the report *Mortality attributable to drug use in Western Australia: 1981-1991* on which this report is based.

Note

The original report was converted into a Pagemaker publication by Susan Jones at the Task Force on Drug Abuse. Permission for the reproduction of this report was given by Dr Ian Rouse, General Manager Health Information Centre, Health Department of WA.

The numbering of the figures and tables has been retained as originally used in the report when published by the HDWA as a Word 6.0 document. In the Pagemaker version of the report some figures and tables are not in the same sequence as was previously followed to reduce size of the publication.

The text of this report and other publications by the Central Drug Coordination Office are available as downloadable PDF documents from its web page at <http://www.wa.gov.au/cdco/>.

1 Introduction

This report estimates the total number of drug-caused deaths in Western Australia during the period 1984 to 1994.¹ It contains analyses of sex- and age-specific mortality by type of drug and year.²

The results provide an update on trends in drug-caused deaths, which will help planners, policy-makers and researchers to quantify the impact of drugs and evaluate preventative strategies undertaken in Western Australia. These include: the Drinksafe Campaign; the Quit Campaign; sobering-up shelters; and random breath testing.

2 The aetiologic fraction methodology

The number of deaths due to tobacco smoking, alcohol consumption, and other drug use were estimated using the aetiologic fractions method, developed in 1990 by Holman, Armstrong and colleagues.³ This involves applying sex-, age-, and condition-specific fractions to the number of deaths from drug-related conditions. The revised aetiologic fractions used in this report were updated by English, Holman, and colleagues in 1995.⁴ The ICD-9CM codes and the aetiologic fractions for drug-related conditions are shown in Appendix A.

Some conditions are wholly attributable to the use of drugs, for example, alcoholic liver cirrhosis. In these cases, all deaths coded to these conditions will be directly caused by drug use, so the aetiologic fractions are 1.0.

However, most conditions cannot be attributed wholly to the use of drugs. In these cases, an indirect estimate of drug-caused mortality is obtained by applying the aetiologic fraction (which is less than 1.0) to the number of deaths from a particular condition. For example, 23% of male deaths from fire injuries can be attributed to cigarette smoking. By applying the aetiologic fraction (0.23) to the number of male deaths resulting from fire injuries (e.g. 100) we estimate that 23 of such deaths could be attributed to cigarette smoking.

The estimated numbers of deaths caused (or prevented⁵) by a drug were calculated by multiplying the number of sex- and age-specific deaths⁶ for each drug-related condition by the corresponding aetiologic fraction, for each year between 1984 and 1994.

2.1 Tobacco

Apart from perinatal conditions, fire injuries, sudden infant death syndrome (SIDS), and tobacco abuse it is assumed that tobacco smoking does not cause deaths in children.

Five causes of death associated with smoking are specific to females: endometrial cancer, cervical cancer, vulvar cancer, ectopic pregnancy, and spontaneous abortion. A further four conditions: antepartum haemorrhage, hypertension in pregnancy, low birthweight, and premature rupture of membranes, are specific to females between the ages of 10 and 54, but fractions are applied to babies of both sexes. Penile cancer is the only condition specific to males.

Only one tobacco-caused condition - tobacco abuse - is wholly attributable to smoking.

Smoking is thought to have a protective effect against developing Parkinson's disease and ulcerative colitis (for younger people) for both males and females, and endometrial cancer and hypertension in pregnancy for females. The aetiologic fractions for these conditions are negative.

2.2 Alcohol

The main difference between the 1990 and 1995 methodologies relates to alcohol consumption. The revised 1995 methodology estimates the effects of hazardous and harmful alcohol consumption⁷ relative to low alcohol consumption, whereas the former model used abstinence as the reference category.

There are a number of alcohol-related conditions that are thought to cause deaths in children. These are: alcoholic psychosis, alcohol dependence, alcohol abuse, alcoholic polyneuropathy, alcoholic cardiomyopathy, alcoholic gastritis, alcoholic liver cirrhosis, road injuries, alcoholic poisoning, assault, child abuse and drowning.

The only alcohol-related cause of death specific to females is breast cancer. There is limited evidence that spontaneous abortion and low birthweight are caused by high alcohol consumption so no fractions are shown for these conditions.

A number of conditions are considered wholly attributable to alcohol use and have aetiologic fractions of 1.0. These are: alcoholic psychosis, alcohol dependence, alcohol abuse, alcoholic polyneuropathy, alcoholic cardiomyopathy, alcoholic gastritis, alcoholic liver cirrhosis, ethanol toxicity, methanol toxicity, alcoholic poisoning, other ethanol/methanol poisoning, and aspiration.

High alcohol consumption is considered to provide a protective effect against cholelithiasis for males and females, and a slight protective effect against stroke for females aged 75 to 79 years. The aetiologic fractions for these conditions are negative.

2.3 Other drugs

The 1995 aetiologic fractions methodology quantifies mortality caused by the following groups of illicit drugs: cannabis; opiates; stimulants; hallucinogens; and anabolic steroids. To avoid underestimating mortality due to drugs other than alcohol and tobacco, and to be consistent with an earlier report,⁸ the aetiologic fractions in this section were extended to include licit drugs, such as barbiturates, anti-depressants, sedatives, tranquillisers, and volatile substances.

The reference to 'other drugs' in this report overcomes the limitations of the artificial distinction created by the terms illicit and licit. Deaths attributed to illicit drug use often involve combinations of pharmaceutical and non-pharmaceutical drugs. Even in cases where licit drugs are thought to be responsible, it may be difficult to determine whether they were obtained licitly.

The only conditions related to other drug use that are thought to cause death in children are low birthweight and newborn drug toxicity.

Two causes of death associated with other drug use are specific to females: antepartum haemorrhage and maternal drug toxicity. Low birthweight is specific to females between the ages of 25 and 39 years, but fractions are applied to babies of both sexes.

Most of the conditions connected with the use of these drugs are wholly attributable, but conditions such as antepartum haemorrhage, low birthweight, hepatitis, AIDS, and infective endocarditis have aetiologic fractions less than 1.0.

3 Results and discussion

3.1 Overview

There were an estimated 20,648 drug-caused deaths in Western Australia from 1984 to 1994 [Table 1].^{9,10} Of these deaths, tobacco smoking was responsible for 16,415 deaths (80%), alcohol consumption for 3,532 (17%) and the use of other drugs for 701 (3%) [Figure 1].

On average, over the 11-year period, there were an estimated 1,877 drug-caused deaths each year: 1,492 caused by tobacco smoking, 321 by alcohol use and 64 by the use of other drugs.

There were 1,861 deaths (9%) which were wholly attributable¹¹ to the use of drugs: 1,182 (64%) alcohol-caused and 679 (36%) caused by other drugs. In addition to these deaths, a further 18,787 deaths (91%) were estimated to be caused by drugs: 16,415 by tobacco smoking, 2,350 by the use of alcohol, and 22 by the use of other drugs.

**Table 1: Estimated numbers of drug-caused deaths, by type of drug and year
Western Australia, 1984-1994**

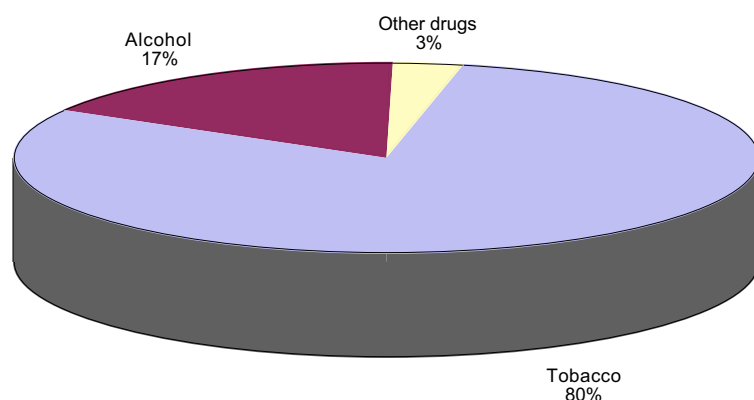
Year	Wholly attributable deaths			Other deaths			Estimated total deaths			All Drugs
	Tobacco	Alcohol	Other drugs	Tobacco	Alcohol	Illicit	Tobacco	Alcohol	Illicit	
1984	0	103	59	1440	197	1	1440	300	60	1800
1985	0	107	61	1398	204	1	1398	311	62	1771
1986	0	109	64	1544	210	2	1544	319	66	1929
1987	0	100	62	1423	207	1	1423	307	63	1793
1988	0	117	47	1534	221	2	1534	338	49	1921
1989	0	127	49	1541	221	2	1541	348	51	1940
1990	0	101	56	1468	217	2	1468	318	58	1844
1991	0	101	55	1509	207	1	1509	308	56	1873
1992	0	109	59	1471	217	2	1471	326	61	1858
1993	0	99	68	1565	219	4	1565	318	72	1955
1994	0	109	99	1522	230	4	1522	339	103	1964
1984-1994	0	1182	679	16415	2350	22	16415	3532	701	20648

Note: 'Wholly attributable deaths' are the number of deaths from conditions for which the aetiologic fractions are equal to 1.0.
'Other deaths' are the estimated number of deaths from conditions for which the aetiologic fractions are not equal to 1.0.

**Table 2: Estimated numbers of drug-caused deaths, by year, sex and type of drug
Western Australia, 1984-1994**

Type of drug	1984	1985	1986	1987	1988	1989	1990	1991	1992	1993	1994	1984-1994
Males												
Tobacco	1111	1061	1168	1088	1146	1147	1085	1114	1071	1145	1133	12269
Alcohol	215	228	222	219	244	255	215	208	222	216	222	2461
Other drugs	32	35	40	43	31	35	41	34	35	46	65	437
All drugs	1358	1323	1429	1350	1420	1435	1340	1355	1329	1408	1420	15167
Females												
Tobacco	329	337	376	335	388	394	383	395	400	420	389	4146
Alcohol	83	84	97	86	96	94	104	102	104	101	117	1071
Other drugs	28	27	26	20	18	16	17	22	26	26	38	264
All drugs	442	448	500	443	501	505	504	518	529	547	544	5481

Figure 1: Proportions of drug-caused deaths by drug type, Western Australia, 1984-1994



Over the period 1984 to 1994, the annual number of all drug-caused deaths increased slightly [Table 1; Figure 2]. For all drug types, there were more male deaths than female deaths [Table 2]. Males accounted for 70% of deaths caused by smoking, 70% of alcohol-caused deaths, and 62% of deaths attributable to other drugs.

3.2 Age-standardised death rates

The age-standardised rate (ASR)¹² for drug-caused deaths declined by 21%, from 111 deaths per 100,000 population in 1984 to 88 in 1994 [Table 3]. This largely reflects the marked reduction in the ASR for smoking-caused deaths, which decreased by 24%, from 87 deaths per 100,000 population in 1984 to 66 in 1994.

Throughout the 11-year period the ASRs for alcohol-caused deaths were between 16 and 20 deaths per 100,000 population. The rates dropped by 15% - from 20 deaths per 100,000 population in 1984 to 17 in 1994. In contrast, the ASR for deaths caused by other drugs increased, especially at the end of the period studied. From 1991 to 1994 rates increased by 71% (76% for males; 63% for females).

The ASRs for all drug-caused deaths were higher for males than for females, but the changes in rates over the period showed sex-related differences. The ASR for males decreased by 25% (from 183 deaths to 138 deaths per 100,000 population) whereas the rate for females decreased by only 12% (from 51 to 45) [Figure 3].

The ASRs for smoking-caused deaths declined by 28% for males (from 150 deaths per 100,000 population to 108) and by 16% for females (from 37 to 31) [Figure 4]. The ASR for alcohol-caused deaths in males also declined, by 21% (from 29 deaths per 100,000 population to 23), but the rate for females showed no change [Figure 5]. The ASRs for deaths caused by other drugs increased over the period, by 68% for males (from 4.0 deaths per 100,000 population to 6.7) but by only 3% for females (from 3.8 to 3.9) [Figure 6].

Figure 2: Estimated numbers of drug-caused deaths, by sex and year Western Australia, 1984-1994

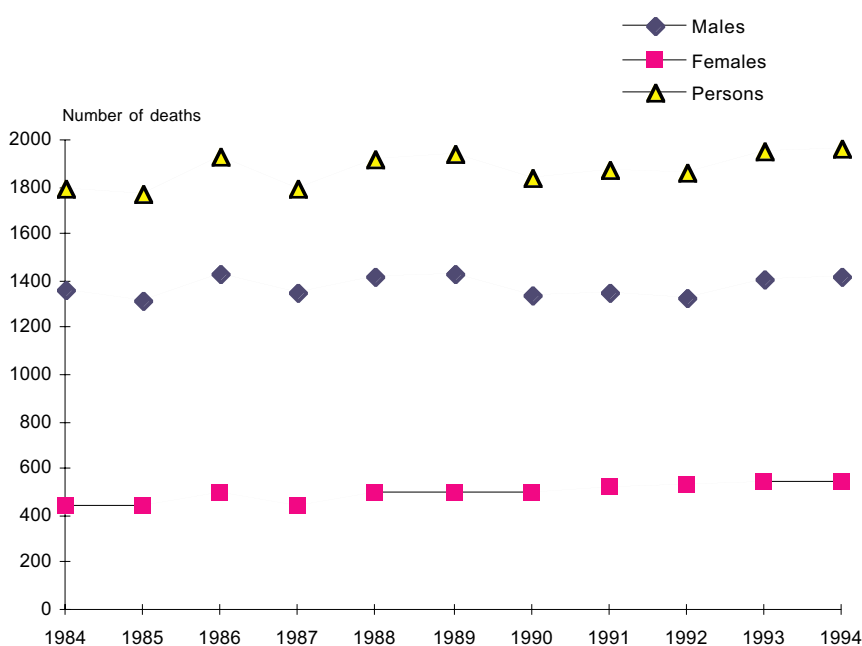


Figure 3: Age-standardised rates for all drug-caused deaths, by sex and year Western Australia, 1984-1994



Table 3: Estimated age-standardised death rates, by year, sex and type of drug Western Australia, 1984-1994

Type of drug	1984	1985	1986	1987	1988	1989	1990	1991	1992	1993	1994
Males											
Tobacco	150	138	147	132	134	130	119	118	109	113	108
Alcohol	29	30	29	27	30	30	24	23	25	23	23
Other	4.0	4.3	4.8	5.3	3.6	3.8	4.4	3.8	3.7	4.8	6.7
All drugs	183	172	180	164	167	163	148	145	137	141	138
Females											
Tobacco	37	36	40	34	37	37	35	35	33	34	31
Alcohol	10	9.6	11	8.9	9.7	9.1	10	9.8	9.9	8.7	10
Other	3.8	3.6	3.2	2.5	2.2	1.9	1.9	2.4	2.7	2.5	3.9
All drugs	51	50	54	45	49	48	47	47	46	45	45
Persons											
Tobacco	87	81	87	77	80	78	73	72	67	70	66
Alcohol	20	20	20	18	20	20	17	17	17	16	17
Other	3.9	3.9	4.0	3.9	2.9	2.9	3.2	3.1	3.2	3.7	5.3
All drugs	111	105	111	99	103	101	93	92	88	89	88

Note: Age-standardised death rates are expressed per 100,000 population.

3.3 Age pattern of deaths

Nearly half of all deaths caused by drug use occurred among people aged 70 years or older, with the proportion of deaths in that age group increasing slightly over the period 1984 to 1994. Only 15% of drug-caused deaths occur among people less than 50 years of age [Table 4; Figure 7].

The age pattern of drug-caused deaths differs with the type of drug [Table 5; Table 6]. Age-specific rates for tobacco-caused deaths increase with age, rising rapidly after the age of 45 years to peak in those aged 85 years and over. Age-specific rates for alcohol-caused deaths showed a minor peak in those aged 20 to 24 years then, around the age of 50 years, the rates began to rise steadily with age, again peaking in the oldest age group. The pattern for deaths attributable to drugs other than alcohol and tobacco is quite different - the age-specific rates are highest between the ages of 20 and 39 years.

These differences reflect the preponderance of deaths from chronic conditions with long latent periods (e.g. cancers) that are related to long-term tobacco smoking or alcohol consumption. Deaths from other drugs are usually the consequences of short-term drug abuse by young adults (e.g. drug dependence, injuries and suicide).

3.4 Smoking-caused deaths

Tobacco smoking was responsible for an estimated 16,415 deaths (80% of all drug-caused deaths) in Western Australia from 1984 to 1994 - an average of 1,492 deaths each year. There were three times as many male deaths due to tobacco smoking than female deaths.

The ASRs for smoking-caused deaths decreased by 24% over the period 1984 to 1994: males by 28%, and females by 16% [Table 3; Figure 4]. Reflecting the greater decrease among males, the male:female rate ratio decreased from 4.1 in 1984 to 3.5 in 1994. The decline in tobacco-caused mortality is likely to be related to the reduction in both smoking prevalence and tar levels in cigarettes smoked by Australian adults.¹³

The estimated number of smoking-caused deaths increased with age. Eighty-one per cent of deaths due to smoking were among people aged 60 years and over, and over half the deaths occurred among those aged 70 years and over [Table 7].

3.5 Alcohol-caused deaths

Alcohol consumption was responsible for an estimated 3,532 deaths (17% of all drug-caused deaths) in Western Australia from 1984 to 1994 - an average of 321 deaths each year. There were more than twice as many male deaths due to alcohol use than female deaths.

The ASRs for alcohol-caused deaths decreased by 15% over the period 1984 to 1994, due to a decrease of 21% in the male rate. The female rate showed no change [Table 3; Figure 5]. Reflecting these sex-related differences, the male:female rate ratio decreased from 2.9 in 1984 to 2.3 in 1994.

The estimated number of alcohol-caused deaths increased steadily with age, apart from a minor peak among 20 to 29 year olds. More than a quarter of alcohol-caused deaths occurred among people aged 70 years and over, but the proportion of female deaths in this age group (44%) was much higher than the proportion of male deaths (18%). Deaths among people under the age of thirty accounted for nearly a quarter of alcohol-caused deaths in males and 12% of alcohol-caused deaths in females [Table 8].

3.6 Deaths caused by the use of other drugs

The use of drugs other than alcohol and tobacco was responsible for an estimated 701 deaths (3% of all drug-caused deaths) in Western Australia from 1984 to 1994 - an average of 64 deaths each year. There were 1.7 times as many male deaths due to other drug use than female deaths.

Although the ASRs for deaths caused by other drug use are low, they increased dramatically at the end of the period studied. Opiates are believed to be a major contributing factor to this increase.¹⁴ Male rates peaked in 1987 (5.3 deaths per 100,000 population) then fell to 3.6 in 1988 and remained relatively steady until 1992. From 1992 to 1994, male rates increased by 81% (to 6.7). Female rates fell steadily from 3.8 in 1984 to 1.9 in 1990. Since then, they have increased - the greatest increase was from 2.5 in 1993 to 3.9 in 1994 (56%) [Table 3; Figure 6]. Reflecting the greater increase in male rates, the male:female rate ratio increased from 1.1 in 1984 to 1.7 in 1994.

In contrast to deaths caused by tobacco smoking and alcohol use, deaths resulting from the use of other drugs had the greatest impact on people aged between 20 and 39 years. Of the 701 deaths caused by the use of other drugs, 59% were among people in this age group, compared with only 5% among people aged 70 years and over.

Among 20 to 39 year olds there was a higher proportion of male deaths due to other drugs compared with females (64% of male deaths; 49% of female deaths). However, among older people, there was a higher proportion of female deaths due to other drugs compared with males (27% of male deaths; 49% of female deaths) [Table 9].

The differences between the age patterns of male and female deaths attributable to the use of other drugs is largely due to the types of drugs used. Opiates, a drug mainly used by young people under 40 years, were responsible for 45% of male deaths due to other drugs and 27% of female deaths. Deaths due to the use of tranquillisers, sedatives and anti-depressants, drugs which are more commonly used by older women, accounted for 11% of male deaths and a quarter of female deaths due to other drugs [Table 10].

Endnotes

¹ The data for 1994 are provisional.

² Although the focus of this study is not cause-specific mortality, cause-specific data has been included in Appendix B to assist other researchers.

³ Holman CDJ, Armstrong BK, Arias LN, Martin CA, Hatton WM, Hayward LD, Salmon MA, Shean RE, Waddell VP (1990) *The quantification of drug caused morbidity and mortality in Australia 1988*. Canberra: Australian Government Publishing Service.

⁴ English DR, Holman CDJ, Milne E, Winter MG, Hulse GK, Codde JP, Bower CI, Corti B, de Klerk N, Knuiman MW, Kurinczuk JJ, Lewin GF, Ryan GA. (1995) *The quantification of drug caused morbidity and mortality in Australia, 1995 edition. Parts 1 and 2*. Commonwealth Department of Human Services and Health, Canberra.

⁵ Some drugs are thought to have a protective effect against developing certain conditions. For these the aetiologic fractions are negative.

⁶ Death data was obtained from the mortality database by year of registration. This database, based on notifications of deaths to the Registrar General's office, is maintained by the Health Statistics Branch of the Health Department of Western Australia.

⁷ As defined by the National Health and Medical Research Council.

⁸ Swensen G (1993). *Mortality attributable to drug use in Western Australia: 1981-1991*. Occasional Paper Number 51. Health Department of Western Australia, Perth.

⁹ In this study, the number of deaths caused by tobacco smoking, alcohol consumption and other drug use are estimated separately. When the separate totals are combined an interactive effect between alcohol use and tobacco smoking for cancers of the mouth, pharynx, larynx and oesophagus may result in an overestimation of up to 3%. (Holman CDJ & Armstrong BK (1992). Lack of positive bias of the confounding effect of risk factors estimated by marginal aetiological fractions. *International Journal of Epidemiology*; 21: 820-823).

¹⁰ The use of aetiologic fractions may give estimated numbers of deaths which are not integers. All numbers are rounded for presentation which may result in some variation in the totals.

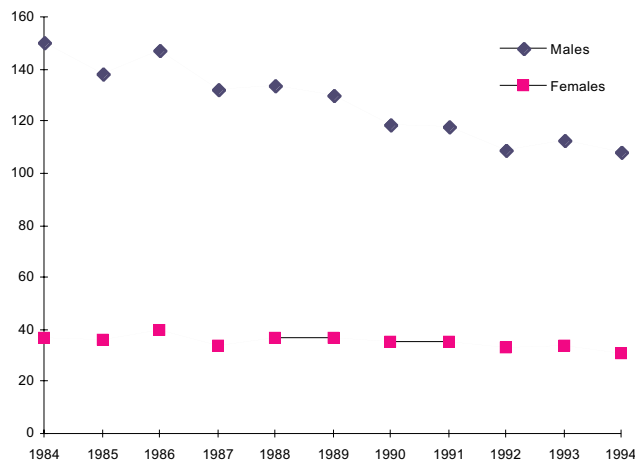
¹¹ Wholly attributable deaths are the number of deaths from conditions for which the aetiologic fractions are 1.0.

¹² Age-standardisation eliminates the effects of differences in the age structures of various populations. A program called the Health Statistics Calculator (written by Dr J Codde, Health Statistics Branch, Health Department of Western Australia, 1993) was used to calculate the age-standardised rates.

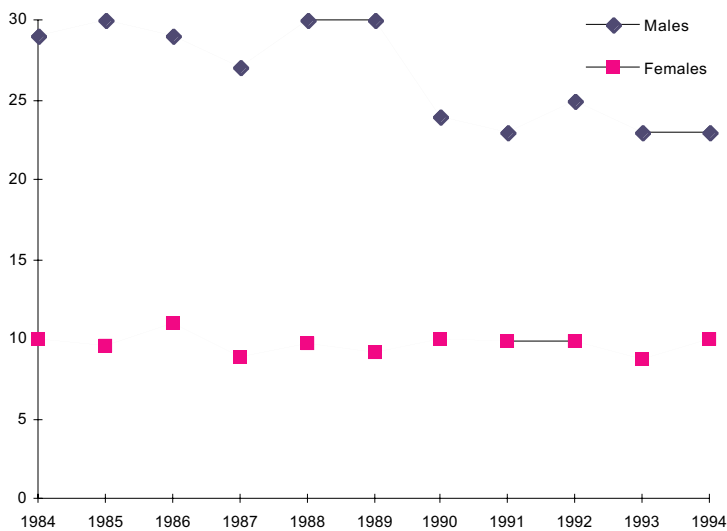
¹³ Australian Institute of Health and Welfare (1992) *Australia's health 1992: the third biennial report of the Australian Institute of Health and Welfare*. Canberra: Australian Government Publishing Service.

¹⁴ Greg Swensen (personal communication).

**Figure 4: Age-standardised rates for tobacco-caused deaths, by sex and year
Western Australia, 1984-1994**



**Figure 5: Age-standardised rates for alcohol-caused deaths, by sex and year
Western Australia, 1984-1994**



**Figure 6: Age-standardised rates for other drug-caused deaths, by sex and year
Western Australia, 1984-1994**

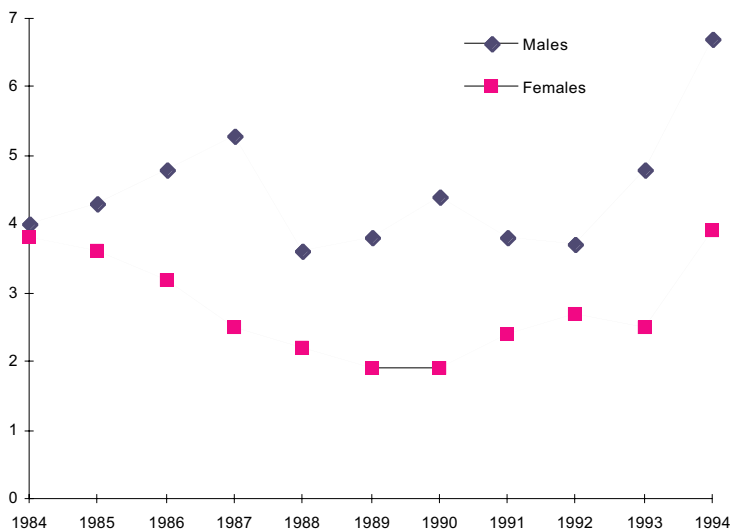


Figure 7: Estimated numbers of drug-caused deaths, by age group and year Western Australia, 1984-1994

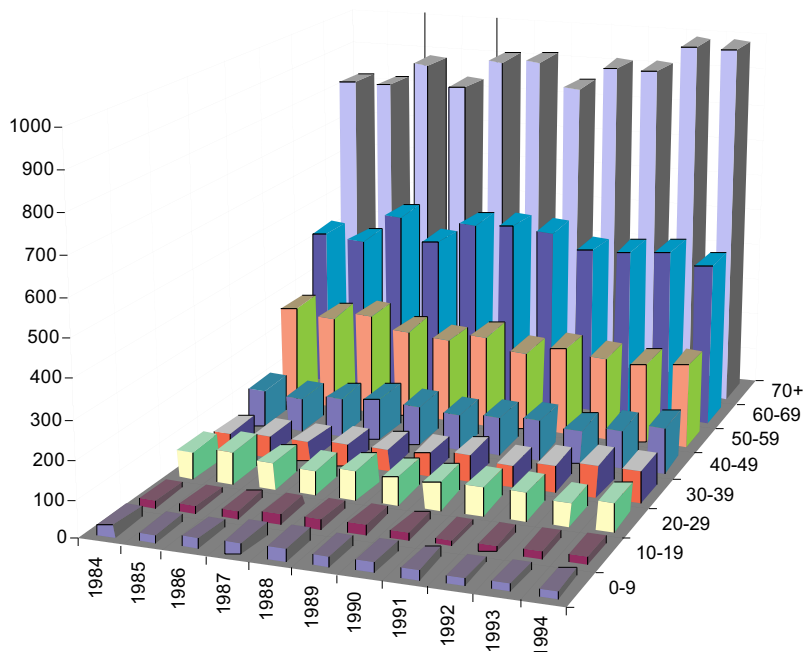


Table 4: Estimated number of drug-caused deaths, by year and age group Western Australia, 1984-1994

Age group	1984	1985	1986	1987	1988	1989	1990	1991	1992	1993	1994	1984-1994
0-9	31	23	27	29	30	25	28	25	18	21	17	277
10-19	20	17	20	24	24	26	20	17	18	19	22	227
20-29	73	87	68	62	73	71	71	72	72	59	75	785
30-39	53	56	55	59	59	61	70	58	70	82	81	706
40-49	103	93	102	113	107	95	101	108	93	106	125	1,148
50-59	270	256	272	240	226	247	214	234	223	215	226	2,624
60-69	428	419	499	434	494	500	492	450	454	464	436	5,069
70+	820	820	885	829	909	915	848	911	910	985	984	9,817
All ages	1,798	1,772	1,929	1,791	1,923	1,941	1,845	1,876	1,858	1,953	1,967	20,654

Table 7: Estimated number of smoking-caused deaths, by sex and age group Western Australia, 1984-1994

Age group	Males		Females		Persons	
	Number	%	Number	%	Number	%
0-9	131	1.1	100	2.4	231	1.4
10-19	3	0	3	0.1	6	0
20-29	40	0.3	19	0.5	59	0.4
30-39	135	1.1	60	1.4	195	1.2
40-49	489	4.0	163	3.9	652	4.0
50-59	1,608	13.1	431	10.4	2,039	12.4
60-69	3,400	27.7	977	23.6	4,377	26.7
70+	6,463	52.7	2,395	57.7	8,858	54.0
All ages	12,269	100.0	4,148	100.0	16,417	100.0

**Table 5: Estimated age-specific death rates, by type of drug
Western Australia, 19894-1994**

Age group	Type of drug			All drugs
	Tobacco	Alcohol	Other	
0-4	17	1.8	0.3	19
5-9	0	1.3	0	1.3
10-14	0	1.5	0	1.5
15-19	0.4	12	2.7	15
20-24	1.4	20	6.6	28
25-29	2.7	16	8.1	27
30-34	4.3	10	7.7	22
35-39	9.6	12	6.4	28
40-44	17	15	5.0	38
45-49	44	20	4.3	69
50-54	92	31	4.8	128
55-59	182	39	3.6	225
60-64	337	51	4.7	393
65-69	393	57	2.7	453
70-74	577	78	3.0	658
75-79	813	51	3.4	867
80-84	966	88	3.8	1,057
85+	1,394	191	1.9	1,587

Note: Age-specific death rates are expressed per 100,000 population.

Table 8: Estimated number of alcohol-caused deaths, by sex and age group Western Australia, 1984-1994

Age group	Males		Females		Persons	
	Number	%	Number	%	Number	%
0-9	31	1.3	10	0.9	41	1.2
10-19	154	6.2	29	2.7	183	5.2
20-29	422	17.1	94	8.8	516	14.6
30-39	239	9.7	72	6.7	311	8.8
40-49	291	11.8	101	9.5	392	11.1
50-59	392	15.9	129	12.1	521	14.7
60-69	485	19.7	162	15.2	647	18.3
70+	454	18.4	471	44.1	925	26.2
All ages	2468	100.0	1068	100.0	3536	100.0

Table 9: Estimated number of deaths caused by the use of other drugs, by sex and age group, Western Australia, 1984-1994

Age group	Males		Females		Persons	
	Number	%	Number	%	Number	%
0-9	3	0.7	2	0.8	5	0.7
10-19	34	7.8	4	1.5	38	5.4
20-29	147	33.6	63	23.9	210	30.0
30-39	134	30.7	66	25.0	200	28.5
40-49	55	12.6	49	18.6	104	14.8
50-59	31	7.1	33	12.5	64	9.1
60-69	21	4.8	24	9.1	45	6.4
70+	12	2.7	22	8.3	34	4.9
All ages	437	100.0	264	100.0	701	100.0

Table 6: Estimated number of drug-caused deaths, by year, age group and type of drug

Age group	1984	1985	1986	1987	1988	1989	1990	1991	1992	1993	1994	1984-1994
Tobacco												
0-9	26	20	22	25	26	20	27	22	13	17	13	231
10-19	1	0	1	1	0	1	0	1	0	1	0	6
20-29	4	10	3	5	5	8	8	4	5	4	3	59
30-39	16	11	19	19	16	17	20	15	19	26	17	195
40-49	59	52	57	65	63	61	61	59	52	57	66	652
50-59	213	201	203	188	184	187	169	188	165	170	171	2039
60-69	376	359	432	373	426	425	427	393	389	401	376	4377
70+	745	745	807	747	814	822	756	827	828	889	878	8858
All ages	1440	1398	1544	1423	1534	1541	1468	1509	1471	1565	1524	16417
Alcohol												
0-9	4	3	5	4	3	5	1	3	5	4	4	41
10-19	14	16	16	15	21	21	17	14	17	14	18	183
20-29	46	52	44	40	52	51	53	48	49	40	41	516
30-39	26	30	16	30	28	28	30	27	29	33	34	311
40-49	36	32	38	35	39	31	28	45	32	37	39	392
50-59	52	51	66	44	39	52	39	39	54	37	48	521
60-69	50	56	62	58	63	69	60	54	61	60	54	647
70+	70	72	72	79	95	92	91	80	79	92	103	925
All ages	298	312	319	305	340	349	319	310	326	317	341	3536
Other drugs												
0-9	1	0	0	0	1	0	0	0	0	0	0	5
10-19	5	1	3	8	3	4	3	2	1	4	4	38
20-29	23	25	21	17	16	12	10	20	18	15	31	210
30-39	11	15	20	10	15	16	20	16	22	23	30	200
40-49	8	9	7	13	5	3	12	4	9	12	20	104
50-59	5	4	3	8	3	8	6	7	4	8	7	64
60-69	2	4	5	3	5	6	5	3	4	3	6	45
70+	5	3	6	3	0	1	1	4	3	4	3	34
All ages	60	62	66	63	49	51	58	57	61	71	102	701

Table 10: Estimated numbers of deaths caused by the use of other drugs, by year, sex and type of drug, Western Australia, 1984-1994

Type of drug	1984	1985	1986	1987	1988	1989	1990	1991	1992	1993	1994	1984-1994
Males												
Cannabis		0	0	0	0	0	0	0	0	0	0	0
Opiates	12	18	12	13	17	18	18	13	15	20	41	197
Amphetamines/psychostimulants	0	0	0	0	0	0	0	3	0	1	0	4
Cocaine	0	0	0	0	0	0	0	0	0	0	0	3
Hallucinogens	0	0	0	0	0	0	0	1	1	1	0	3
Barbiturates	5	3	3	2	0	2	0	1	1	0	0	17
Tranquillisers/sedatives/anti-depressants	5	5	4	4	3	1	3	2	4	6	11	48
Volatile substances	1	1	5	4	1	3	5	3	0	3	3	29
Other/unspecified drugs	8	7	15	19	9	10	14	10	13	13	8	126
Other causes	0	1	1	1	1	1	1	1	1	1	1	10
Total	32	35	40	43	31	35	41	34	35	46	65	437
Females												
Cannabis		0	0	0	0	0	0	0	0	0	0	0
Opiates	8	9	8	3	8	5	2	3	11	8	5	70
Amphetamines/psychostimulants	0	0	0	0	0	0	1	0	0	0	0	1
Cocaine	0	0	0	0	0	0	0	0	0	0	0	2
Hallucinogens	0	0	0	0	0	0	0	0	0	0	0	0
Barbiturates	4	2	3	2	0	1	0	0	0	1	0	13
Tranquillisers/sedatives/anti-depressants	10	5	5	8	2	3	2	5	2	5	18	65
Volatile substances	0	0	0	0	0	0	0	0	1	0	0	1
Other/unspecified drugs	6	11	9	7	7	6	11	14	11	10	13	105
Other causes	0	0	1	0	1	1	1	0	0	2	1	7
Total	28	27	26	20	18	16	17	22	26	26	38	264

Appendix A

Tables of aetiologic fractions

Table A1: Estimated age-specific aetiologic fractions for conditions in Australian males caused or prevented by tobacco

ICD9 codes	0-4	5-9	10-14	15-19	20-24	25-29	30-34	35-39	40-44	45-49	50-54	55-59	60-64	65-69	70-74	75-79	80-84	85+	Cause of death
141,143-146,148,149				0.51	0.6	0.61	0.6	0.6	0.57	0.59	0.57	0.58	0.57	0.54	0.5	0.46	0.44	0.44	Oropharyngeal cancer
150				0.47	0.56	0.57	0.56	0.57	0.54	0.56	0.54	0.55	0.54	0.52	0.48	0.44	0.42	0.42	Oesophageal cancer
151				0.11	0.15	0.15	0.15	0.15	0.14	0.15	0.14	0.14	0.14	0.13	0.11	0.1	0.09	0.09	Stomach cancer
154,2,154,3				0.4	0.48	0.5	0.5	0.5	0.48	0.5	0.49	0.5	0.49	0.48	0.45	0.42	0.4	0.4	Anal cancer
157				0.2	0.26	0.27	0.26	0.26	0.24	0.25	0.24	0.24	0.23	0.21	0.18	0.16	0.15	0.15	Pancreatic cancer
161				0.66	0.73	0.74	0.74	0.74	0.72	0.73	0.72	0.73	0.72	0.71	0.67	0.64	0.63	0.63	Laryngeal cancer
162				0.79	0.84	0.85	0.85	0.85	0.84	0.85	0.85	0.86	0.85	0.85	0.84	0.82	0.81	0.81	Lung cancer
179,182																			Endometrial cancer
180,233,1																			Cervical cancer
184,4																			Vulvar cancer
187,1-187,4																			Penile cancer
188				0.21	0.27	0.29	0.3	0.31	0.3	0.31	0.31	0.33	0.33	0.33	0.31	0.3	0.29	0.29	Bladder cancer
189,0				0.35	0.43	0.44	0.44	0.45	0.42	0.44	0.43	0.44	0.43	0.42	0.39	0.36	0.35	0.35	Renal parench. cancer
189,1				0.18	0.24	0.26	0.27	0.28	0.28	0.29	0.29	0.31	0.31	0.32	0.3	0.29	0.28	0.28	Renal pelvic cancer
231				0.47	0.56	0.57	0.57	0.57	0.55	0.56	0.55	0.56	0.55	0.54	0.5	0.47	0.45	0.45	Resp. carcinoma in-situ
305,1	1	1	1	1	1	1	1	1	1	1	1	1	1	1	1	1	1	1	Tobacco abuse
332				-0.17	-0.27	-0.32	-0.34	-0.37	-0.35	-0.39	-0.38	-0.44	-0.45	-0.48	-0.43	-0.41	-0.39	-0.39	Parkinson's disease
410-414				0.38	0.46	0.47	0.46	0.47	0.44	0.45	0.44	0.44	0.43	0.42	0.41	0.41	0.41	0.41	Ischaemic heart disease
415-417				0.74	0.8	0.82	0.82	0.82	0.82	0.83	0.82	0.83	0.83	0.83	0.82	0.81	0.8	0.8	Pulmonary circ. disease
427				0.38	0.46	0.47	0.46	0.47	0.44	0.45	0.44	0.44	0.43	0.42	0.41	0.41	0.41	0.41	Cardiac dysrhythmias
428-429				0.38	0.46	0.47	0.46	0.47	0.44	0.45	0.44	0.44	0.43	0.42	0.41	0.41	0.41	0.41	Heart failure
430-438				0.38	0.46	0.47	0.46	0.46	0.43	0.44	0.43	0.43	0.41	0.41	0.41	0.41	0.41	0.41	Stroke
440-448				0.33	0.41	0.43	0.43	0.44	0.42	0.44	0.43	0.44	0.44	0.44	0.41	0.39	0.38	0.38	Atherosclerosis
480-487				0.13	0.18	0.19	0.19	0.2	0.19	0.2	0.19	0.21	0.21	0.21	0.19	0.18	0.17	0.17	Pneumonia
490-492,496				0.74	0.8	0.82	0.82	0.82	0.82	0.83	0.82	0.83	0.83	0.83	0.82	0.81	0.8	0.8	COPD
531-534				0.27	0.35	0.39	0.4	0.42	0.41	0.43	0.43	0.45	0.46	0.47	0.46	0.45	0.44	0.44	Peptic ulcer
555				0.24	0.31	0.34	0.35	0.36	0.36	0.37	0.37	0.39	0.4	0.41	0.39	0.38	0.37	0.37	Crohn's disease
556				-0.07	-0.08	-0.03	0.02	0.04	0.09	0.09	0.11	0.15	0.18	0.23	0.24	0.26	0.26	0.26	Ulcerative colitis
633,761,4																			Ecotopic pregnancy
634,761,8																			Spontaneous abortion
640,641,762,0,762,1	0.15																		Antepartum haem.
642,760,0	-0.07																		Hypertension in preg.
656,5,764,765	0.23																		Low birthweight
658,1,658,2,761,1	0.21																		Prem. rupture of membs
798,0	0.34																		SIDS
E890-E899	0.23	0.23	0.23	0.23	0.23	0.23	0.23	0.23	0.23	0.23	0.23	0.23	0.23	0.23	0.23	0.23	0.23	0.23	Fire injuries

Table A2: Estimated age-specific aetiologic fractions for conditions in Australian females caused or prevented by tobacco

ICD9 codes	0-4	5-9	10-14	15-19	20-24	25-29	30-34	35-39	40-44	45-49	50-54	55-59	60-64	65-69	70-74	75-79	80-84	85+	Cause of death
141,143-146,148,149				0.56	0.58	0.57	0.55	0.52	0.49	0.51	0.48	0.47	0.44	0.4	0.39	0.33	0.17	0.17	Oropharyngeal cancer
150				0.52	0.55	0.53	0.51	0.48	0.46	0.47	0.44	0.43	0.41	0.37	0.36	0.31	0.17	0.17	Oesophageal cancer
151				0.13	0.14	0.13	0.13	0.11	0.1	0.11	0.1	0.09	0.09	0.08	0.07	0.06	0.03	0.03	Stomach cancer
154.2,154.3				0.45	0.48	0.47	0.45	0.42	0.4	0.41	0.38	0.37	0.35	0.33	0.32	0.27	0.15	0.15	Anal cancer
157				0.23	0.25	0.24	0.22	0.2	0.19	0.19	0.18	0.17	0.15	0.13	0.13	0.1	0.04	0.04	Pancreatic cancer
161				0.7	0.72	0.71	0.7	0.67	0.65	0.66	0.64	0.63	0.6	0.57	0.56	0.5	0.31	0.31	Laryngeal cancer
162				0.79	0.81	0.81	0.8	0.78	0.76	0.77	0.75	0.74	0.72	0.7	0.69	0.64	0.47	0.47	Lung cancer
179,182				0.22	0.24	0.23	0.22	0.2	0.19	0.2	-0.13	-0.13	-0.11	-0.09	-0.09	-0.07	-0.03	-0.03	Endometrial cancer
180,233.1				0.46	0.48	0.46	0.44	0.41	0.39	0.4	0.37	0.36	0.33	0.3	0.29	0.23	0.11	0.11	Cervical cancer
184.4																			Vulvar cancer
187.1-187.4																			Penile cancer
188				0.39	0.42	0.41	0.39	0.36	0.34	0.36	0.33	0.32	0.3	0.28	0.27	0.23	0.13	0.13	Bladder cancer
189.0				0.21	0.24	0.25	0.24	0.22	0.21	0.22	0.2	0.19	0.18	0.18	0.18	0.15	0.1	0.1	Renal parench. cancer
189.1				0.52	0.55	0.54	0.52	0.49	0.47	0.48	0.45	0.44	0.41	0.38	0.37	0.32	0.18	0.18	Renal pelvic cancer
231				0.79	0.81	0.81	0.8	0.78	0.76	0.77	0.75	0.74	0.72	0.7	0.69	0.64	0.47	0.47	Resp. carcinoma in-situ
305.1	1	1	1	1	1	1	1	1	1	1	1	1	1	1	1	1	1	1	Tobacco abuse
332				-0.22	-0.28	-0.29	-0.28	-0.23	-0.22	-0.24	-0.2	-0.2	-0.19	-0.18	-0.17	-0.14	-0.08	-0.08	Parkinson's disease
410-414				0.42	0.45	0.43	0.41	0.38	0.36	0.37	0.35	0.34	0.31	0.11	0.1	0.08	0.03	0.03	Ischaemic heart disease
415-417				0.78	0.8	0.8	0.79	0.77	0.76	0.77	0.74	0.74	0.72	0.71	0.7	0.66	0.52	0.52	Pulmonary circ. disease
427				0.42	0.45	0.43	0.41	0.38	0.36	0.37	0.35	0.34	0.31	0.11	0.1	0.08	0.03	0.03	Cardiac dysrhythmias
428-429				0.42	0.45	0.43	0.41	0.38	0.36	0.37	0.35	0.34	0.31	0.11	0.1	0.08	0.03	0.03	Heart failure
430-438				0.43	0.45	0.43	0.41	0.38	0.36	0.37	0.34	0.33	0.3	0.11	0.11	0.08	0.04	0.04	Stroke
440-448				0.37	0.4	0.4	0.39	0.35	0.34	0.35	0.32	0.32	0.3	0.28	0.28	0.23	0.14	0.14	Atherosclerosis
480-487				0.15	0.17	0.17	0.17	0.15	0.14	0.15	0.13	0.13	0.12	0.11	0.11	0.09	0.05	0.05	Pneumonia
490-492,496				0.78	0.8	0.8	0.79	0.77	0.76	0.77	0.74	0.74	0.72	0.71	0.7	0.66	0.52	0.52	COPD
531-534				0.32	0.36	0.37	0.36	0.33	0.32	0.34	0.31	0.31	0.3	0.3	0.29	0.25	0.17	0.17	Peptic ulcer
555				0.45	0.48	0.46	0.44	0.41	0.39	0.4	0.38	0.37	0.34	0.31	0.3	0.25	0.13	0.13	Crohn's disease
556				-0.08	-0.04	0.02	0.03	0.03	0.03	0.05	0.03	0.05	0.06	0.09	0.09	0.09	0.09	0.09	Ulcerative colitis
633,761.4				0.15	0.17	0.17	0.16	0.14	0.14	0.14	0.13	0.13	0.12	0.11	0.11	0.09	0.09	0.09	Ectopic pregnancy
634,761.8				0.09	0.09	0.09	0.09	0.09	0.09	0.09	0.09	0.09	0.09	0.09	0.09	0.09	0.09	0.09	Spontaneous abortion
640,641,762.0,762.1	0.15		0.15	0.15	0.15	0.15	0.15	0.15	0.15	0.15	0.15	0.15	0.15	0.15	0.15	0.15	0.15	0.15	Antepartum haem.
642,760.0	-0.07		-0.07	-0.07	-0.07	-0.07	-0.07	-0.07	-0.07	-0.07	-0.07	-0.07	-0.07	-0.07	-0.07	-0.07	-0.07	-0.07	Hypertension in preg.
656.5,764,765	0.23		0.23	0.23	0.23	0.23	0.23	0.23	0.23	0.23	0.23	0.23	0.23	0.23	0.23	0.23	0.23	0.23	Low birthweight
658.1,658.2,761.1	0.21		0.21	0.21	0.21	0.21	0.21	0.21	0.21	0.21	0.21	0.21	0.21	0.21	0.21	0.21	0.21	0.21	Prem. rupture of membs
798.0	0.34		0.34	0.34	0.34	0.34	0.34	0.34	0.34	0.34	0.34	0.34	0.34	0.34	0.34	0.34	0.34	0.34	SIDS
E890-E899	0.23	0.23	0.23	0.23	0.23	0.23	0.23	0.23	0.23	0.23	0.23	0.23	0.23	0.23	0.23	0.23	0.23	0.23	Fire injuries

Table A3: Estimated age-specific aetiologic fractions for conditions in Australian males caused or prevented by alcohol

ICD9 codes	0-4	5-9	10-14	15-19	20-24	25-29	30-34	35-39	40-44	45-49	50-54	55-59	60-64	65-69	70-74	75-79	80-84	85+	Cause of death
141,143-146,148,149																			Oropharyngeal cancer
150				0.22	0.26	0.25	0.2	0.19	0.21	0.2	0.23	0.19	0.2	0.14	0.12	0.06	0.04	0.04	Oesophageal cancer
155				0.14	0.17	0.16	0.13	0.12	0.13	0.13	0.15	0.12	0.13	0.09	0.07	0.04	0.02	0.02	Liver cancer
161				0.2	0.23	0.23	0.18	0.18	0.18	0.18	0.21	0.18	0.18	0.15	0.11	0.06	0.03	0.03	Laryngeal cancer
174				0.22	0.25	0.25	0.2	0.2	0.2	0.2	0.23	0.19	0.2	0.16	0.12	0.07	0.04	0.04	Female breast cancer
291	1	1	1	1	1	1	1	1	1	1	1	1	1	1	1	1	1	1	Alcoholic psychosis
303	1	1	1	1	1	1	1	1	1	1	1	1	1	1	1	1	1	1	Alcohol dependence
305.0	1	1	1	1	1	1	1	1	1	1	1	1	1	1	1	1	1	1	Alcohol abuse
345				0.15	0.15	0.15	0.15	0.15	0.15	0.15	0.15	0.15	0.15	0.15	0.15	0.15	0.15	0.15	Epilepsy
357.5	1	1	1	1	1	1	1	1	1	1	1	1	1	1	1	1	1	1	Alc. poly neuropathy
401-405				0.11	0.14	0.14	0.1	0.1	0.11	0.1	0.12	0.1	0.1	0.08	0.06	0.03	0.02	0.02	Hypertension
425.5	1	1	1	1	1	1	1	1	1	1	1	1	1	1	1	1	1	1	Alc. cardiomyopathy
427.0,427.2,427.3				0.08	0.1	0.1	0.08	0.08	0.08	0.08	0.09	0.08	0.07	0.06	0.04	0.02	0.01	0.01	SV cardiac dysrhyth.
430-438				0.17	0.2	0.21	0.16	0.15	0.17	0.16	0.18	0.14	0.15	0.11	0.09	0.05	0.03	0.03	Stroke
456.0-456.2				0.55	0.6	0.61	0.52	0.54	0.53	0.53	0.57	0.52	0.52	0.48	0.39	0.24	0.15	0.15	Oesophageal varices
530.7				0.47	0.47	0.47	0.47	0.47	0.47	0.47	0.47	0.47	0.47	0.47	0.47	0.47	0.47	0.47	Gastro-oes. haem.
535.3	1	1	1	1	1	1	1	1	1	1	1	1	1	1	1	1	1	1	Alcoholic gastritis
571.0-571.3	1	1	1	1	1	1	1	1	1	1	1	1	1	1	1	1	1	1	Alc. liver cirrhosis
574				-0.05	-0.06	-0.07	-0.05	-0.05	-0.05	-0.05	-0.06	-0.04	-0.04	-0.03	-0.02	-0.01	-0.01	-0.01	Cholelithiasis
577.0				0.24	0.24	0.24	0.24	0.24	0.24	0.24	0.24	0.24	0.24	0.24	0.24	0.24	0.24	0.24	Acute pancreatitis
577.1				0.84	0.84	0.84	0.84	0.84	0.84	0.84	0.84	0.84	0.84	0.84	0.84	0.84	0.84	0.84	Chronic pancreatitis
634																			Spontaneous abortion
656.5,764,765																			Low birthweight
696.1				0.03	0.05	0.04	0.03	0.03	0.03	0.03	0.04	0.03	0.03	0.02	0.02	0.01			Psoriasis
980.0				1	1	1	1	1	1	1	1	1	1	1	1	1	1	1	Ethanol toxicity
980.1				1	1	1	1	1	1	1	1	1	1	1	1	1	1	1	Methanol toxicity
E810-E819	0.33	0.33	0.33	0.33	0.43	0.43	0.25	0.25	0.25	0.25	0.18	0.18	0.18	0.18	0.18	0.18	0.18	0.18	Road injuries
E860.0	1	1	1	1	1	1	1	1	1	1	1	1	1	1	1	1	1	1	Alcoholic poisoning
E860.1-E860.2				1	1	1	1	1	1	1	1	1	1	1	1	1	1	1	Other eth./meth. pois.
E880-E888				0.34	0.34	0.34	0.34	0.34	0.34	0.34	0.34	0.34	0.34	0.34	0.34	0.34	0.34	0.34	Fall injuries
E890-E899				0.44	0.44	0.44	0.44	0.44	0.44	0.44	0.44	0.44	0.44	0.44	0.44	0.44	0.44	0.44	Fire injuries
E910			0.03	0.32	0.32	0.32	0.5	0.5	0.5	0.42	0.42	0.42	0.31	0.31	0.31	0.31	0.31	0.31	Drowning
E911				1	1	1	1	1	1	1	1	1	1	1	1	1	1	1	Aspiration
E919,E920				0.07	0.07	0.07	0.07	0.07	0.07	0.07	0.07	0.07	0.07	0.07	0.07	0.07	0.07	0.07	Occ./machine injuries
E950-E959				0.12	0.14	0.15	0.11	0.11	0.11	0.11	0.13	0.11	0.11	0.09	0.07	0.03	0.02	0.02	Suicide
E960,E965,E966,E968,E969	0.47	0.47	0.47	0.47	0.47	0.47	0.47	0.47	0.47	0.47	0.47	0.47	0.47	0.47	0.47	0.47	0.47	0.47	Assault
E967	0.16	0.16	0.16	0.16	0.16	0.16	0.16	0.16	0.16	0.16	0.16	0.16	0.16	0.16	0.16	0.16	0.16	0.16	Child abuse

Table A4: Estimated age-specific aetiological fractions for conditions in Australian females caused or prevented by alcohol

ICD9 codes	0-4	5-9	10-14	15-19	20-24	25-29	30-34	35-39	40-44	45-49	50-54	55-59	60-64	65-69	70-74	75-79	80-84	85+	Cause of death
141,143-146,148,149				0.1	0.14	0.09	0.06	0.07	0.07	0.1	0.09	0.08	0.08	0.07	0.09	0.02	0.02	0.02	Oropharyngeal cancer
150				0.07	0.09	0.07	0.05	0.05	0.05	0.07	0.07	0.06	0.06	0.06	0.06	0.02	0.02	0.02	Oesophageal cancer
155				0.13	0.17	0.13	0.09	0.1	0.12	0.14	0.12	0.11	0.11	0.12	0.11	0.06	0.04	0.04	Liver cancer
161				0.14	0.18	0.14	0.1	0.11	0.13	0.15	0.14	0.12	0.12	0.13	0.12	0.07	0.05	0.05	Laryngeal cancer
174				0.03	0.04	0.03	0.02	0.02	0.03	0.03	0.03	0.03	0.03	0.03	0.03	0.01	0.01	0.01	Female breast cancer
291	1	1	1	1	1	1	1	1	1	1	1	1	1	1	1	1	1	1	Alcoholic psychosis
303	1	1	1	1	1	1	1	1	1	1	1	1	1	1	1	1	1	1	Alcohol dependence
305.0	1	1	1	1	1	1	1	1	1	1	1	1	1	1	1	1	1	1	Alcohol abuse
345				0.15	0.15	0.15	0.15	0.15	0.15	0.15	0.15	0.15	0.15	0.15	0.15	0.15	0.15	0.15	Epilepsy
357.5	1	1	1	1	1	1	1	1	1	1	1	1	1	1	1	1	1	1	Alc. poly neuropathy
401-405				0.07	0.09	0.07	0.05	0.05	0.06	0.07	0.06	0.05	0.05	0.05	0.06	0.03	0.02	0.02	Hypertension
425.5	1	1	1	1	1	1	1	1	1	1	1	1	1	1	1	1	1	1	Alc. cardiomyopathy
427.0,427.2,427.3				0.06	0.07	0.06	0.04	0.05	0.06	0.06	0.05	0.05	0.05	0.05	0.05	0.03	0.02	0.02	SV cardiac dysrhythmias
430-438				0.26	0.32	0.22	0.14	0.14	0.13	0.23	0.2	0.16	0.17	0.14	0.2	-0.01	0.04	0.04	Stroke
456.0-456.2				0.44	0.52	0.45	0.36	0.39	0.44	0.46	0.43	0.4	0.39	0.42	0.4	0.28	0.19	0.19	Oesophageal varices
530.7				0.47	0.47	0.47	0.47	0.47	0.47	0.47	0.47	0.47	0.47	0.47	0.47	0.47	0.47	0.47	Gastro-oes. haem.
535.3	1	1	1	1	1	1	1	1	1	1	1	1	1	1	1	1	1	1	Alcoholic gastritis
571.0-571.3	1	1	1	1	1	1	1	1	1	1	1	1	1	1	1	1	1	1	Alc. liver cirrhosis
574				-0.03	-0.04	-0.03	-0.02	-0.02	-0.02	-0.03	-0.02	-0.02	-0.02	-0.02	-0.02	-0.01	-0.01	-0.01	Cholelithiasis
577.0				0.24	0.24	0.24	0.24	0.24	0.24	0.24	0.24	0.24	0.24	0.24	0.24	0.24	0.24	0.24	Acute pancreatitis
577.1				0.84	0.84	0.84	0.84	0.84	0.84	0.84	0.84	0.84	0.84	0.84	0.84	0.84	0.84	0.84	Chronic pancreatitis
634																			Spontaneous abortion
656.5,764,765																			Low birthweight
696.1				0.01	0.02	0.01	0.01	0.01	0.01	0.01	0.01	0.01	0.01	0.01	0.01	0.01	0.01	0.01	Psoriasis
980.0				1	1	1	1	1	1	1	1	1	1	1	1	1	1	1	Ethanol toxicity
980.1				1	1	1	1	1	1	1	1	1	1	1	1	1	1	1	Methanol toxicity
E810-E819	0.15	0.15	0.15	0.15	0.33	0.33	0.17	0.17	0.17	0.17	0.17	0.17	0.17	0.17	0.17	0.17	0.17	0.17	Road injuries
E860.0	1	1	1	1	1	1	1	1	1	1	1	1	1	1	1	1	1	1	Alcoholic poisoning
E860.1-E860.2				1	1	1	1	1	1	1	1	1	1	1	1	1	1	1	Other eth./meth. pois.
E880-E888				0.34	0.34	0.34	0.34	0.34	0.34	0.34	0.34	0.34	0.34	0.34	0.34	0.34	0.34	0.34	Fall injuries
E890-E899				0.44	0.44	0.44	0.44	0.44	0.44	0.44	0.44	0.44	0.44	0.44	0.44	0.44	0.44	0.44	Fire injuries
E910				0.32	0.32	0.32	0.5	0.5	0.5	0.42	0.42	0.42	0.31	0.31	0.31	0.31	0.31	0.31	Drowning
E911				1	1	1	1	1	1	1	1	1	1	1	1	1	1	1	Aspiration
E919,E920				0.07	0.07	0.07	0.07	0.07	0.07	0.07	0.07	0.07	0.07	0.07	0.07	0.07	0.07	0.07	Occ./machine injuries
E950-E959				0.08	0.1	0.08	0.06	0.06	0.08	0.08	0.07	0.07	0.07	0.07	0.07	0.04	0.02	0.02	Suicide
E960,E965,E966,E968,E969	0.47	0.47	0.47	0.47	0.47	0.47	0.47	0.47	0.47	0.47	0.47	0.47	0.47	0.47	0.47	0.47	0.47	0.47	Assault
E967	0.16	0.16	0.16	0.16	0.16	0.16	0.16	0.16	0.16	0.16	0.16	0.16	0.16	0.16	0.16	0.16	0.16	0.16	Child abuse

Table A5 : Estimated age-specific aetiologic fractions for conditions in Australian males caused by other drug use

ICD9 codes	0-4	5-9	10-14	15-19	20-24	25-29	30-34	35-39	40-44	45-49	50-54	55-59	60-64	65-69	70-74	75-79	80-84	85+	Cause of death
304.3			1	1	1	1	1	1	1	1	1	1	1	1	1	1	1	1	Cannabis dependence
305.2			1	1	1	1	1	1	1	1	1	1	1	1	1	1	1	1	Cannabis abuse
304.0,304.7			1	1	1	1	1	1	1	1	1	1	1	1	1	1	1	1	Opiate dependence
305.5			1	1	1	1	1	1	1	1	1	1	1	1	1	1	1	1	Opiate abuse
E850.0-E850.2,E850.8			1	1	1	1	1	1	1	1	1	1	1	1	1	1	1	1	Acc.pois.-opiates
E950.0			1	1	1	1	1	1	1	1	1	1	1	1	1	1	1	1	Suicide - opiates
E980.0			1	1	1	1	1	1	1	1	1	1	1	1	1	1	1	1	Poisoning - opiates
304.4			1	1	1	1	1	1	1	1	1	1	1	1	1	1	1	1	Amphetamine dependence
305.7			1	1	1	1	1	1	1	1	1	1	1	1	1	1	1	1	Amphetamine abuse
E854.2			1	1	1	1	1	1	1	1	1	1	1	1	1	1	1	1	Acc.pois.-psychostimulants
304.2			1	1	1	1	1	1	1	1	1	1	1	1	1	1	1	1	Cocaine dependence
305.6			1	1	1	1	1	1	1	1	1	1	1	1	1	1	1	1	Cocaine abuse
640.641																			Antepartum haemorrhage
656.5,764,765	0.02																		Low birthweight
E855.2			1	1	1	1	1	1	1	1	1	1	1	1	1	1	1	1	Acc.pois.-local anaesthetic
304.5			1	1	1	1	1	1	1	1	1	1	1	1	1	1	1	1	Hallucinogen dependence
305.3			1	1	1	1	1	1	1	1	1	1	1	1	1	1	1	1	Hallucinogen abuse
E854.1			1	1	1	1	1	1	1	1	1	1	1	1	1	1	1	1	Acc.pois.-hallucinogens
304.1			1	1	1	1	1	1	1	1	1	1	1	1	1	1	1	1	Barbiturate dependence
E851			1	1	1	1	1	1	1	1	1	1	1	1	1	1	1	1	Acc.pois.-barbiturates
E950.1			1	1	1	1	1	1	1	1	1	1	1	1	1	1	1	1	Suicide - barbiturates
E980.1			1	1	1	1	1	1	1	1	1	1	1	1	1	1	1	1	Poisoning - barbiturates
305.8			1	1	1	1	1	1	1	1	1	1	1	1	1	1	1	1	Antidepressant abuse
E852			1	1	1	1	1	1	1	1	1	1	1	1	1	1	1	1	Acc.pois.- other sedatives
E853			1	1	1	1	1	1	1	1	1	1	1	1	1	1	1	1	Acc.pois.- tranquilisers
E854.0			1	1	1	1	1	1	1	1	1	1	1	1	1	1	1	1	Acc.pois.- antidepressants
E950.2			1	1	1	1	1	1	1	1	1	1	1	1	1	1	1	1	Suicide - other sedatives
E980.2			1	1	1	1	1	1	1	1	1	1	1	1	1	1	1	1	Poisoning - other sedatives
304.6			1	1	1	1	1	1	1	1	1	1	1	1	1	1	1	1	Vol. substance dependence
E862.0, .1, .4, .9, E866.6			1	1	1	1	1	1	1	1	1	1	1	1	1	1	1	1	Acc.pois.- vol.substances
E951.1			1	1	1	1	1	1	1	1	1	1	1	1	1	1	1	1	Suicide - vol.substances
E981.1			1	1	1	1	1	1	1	1	1	1	1	1	1	1	1	1	Poisoning - vol.substances
304.8,304.9			1	1	1	1	1	1	1	1	1	1	1	1	1	1	1	1	Dependence-comb./unspec.drugs
305.4			1	1	1	1	1	1	1	1	1	1	1	1	1	1	1	1	Abuse-barb/sed/hypnotic drugs
305.9			1	1	1	1	1	1	1	1	1	1	1	1	1	1	1	1	Other/unspec.drug abuse
E850.3-E850.7,E850.9			1	1	1	1	1	1	1	1	1	1	1	1	1	1	1	1	Acc.pois.- other drugs
E950.3-E950.5			1	1	1	1	1	1	1	1	1	1	1	1	1	1	1	1	Suicide - other drugs
E962.0			1	1	1	1	1	1	1	1	1	1	1	1	1	1	1	1	Assault by pois.with drugs
E980.3-E980.5			1	1	1	1	1	1	1	1	1	1	1	1	1	1	1	1	Poisoning - other/unspec.drugs
070.2-070.3	0.29	0.29	0.29	0.29	0.29	0.29	0.29	0.29	0.29	0.29	0.29	0.29	0.29	0.29	0.29	0.29	0.29	0.29	Hepatitis B
070.4-070.5	0.42	0.42	0.42	0.42	0.42	0.42	0.42	0.42	0.42	0.42	0.42	0.42	0.42	0.42	0.42	0.42	0.42	0.42	Hepatitis non-A, non-B
279.1,042-044	0.01	0.01	0.01	0.01	0.01	0.01	0.01	0.01	0.01	0.01	0.01	0.01	0.01	0.01	0.01	0.01	0.01	0.01	AIDS/HIV
421	0.14	0.14	0.14	0.14	0.14	0.14	0.14	0.14	0.14	0.14	0.14	0.14	0.14	0.14	0.14	0.14	0.14	0.14	Infective endocarditis
292	1	1	1	1	1	1	1	1	1	1	1	1	1	1	1	1	1	1	Drug psychoses
648.3																			Maternal drug dependence
760.72-760.73,779.5	1																		Newborn drug toxicity

Table A6 : Estimated age-specific aetiologic fractions for conditions in Australian females caused by other drug use

ICD9 codes	0-4	5-9	10-14	15-19	20-24	25-29	30-34	35-39	40-44	45-49	50-54	55-59	60-64	65-69	70-74	75-79	80-84	85+	Cause of death
304.3			1	1	1	1	1	1	1	1	1	1	1	1	1	1	1	1	Cannabis dependence
305.2			1	1	1	1	1	1	1	1	1	1	1	1	1	1	1	1	Cannabis abuse
304.0,304.7			1	1	1	1	1	1	1	1	1	1	1	1	1	1	1	1	Opiate dependence
305.5			1	1	1	1	1	1	1	1	1	1	1	1	1	1	1	1	Opiate abuse
E850.0-E850.2,E850.8			1	1	1	1	1	1	1	1	1	1	1	1	1	1	1	1	Acc.pois.-opiates
E950.0			1	1	1	1	1	1	1	1	1	1	1	1	1	1	1	1	Suicide - opiates
E980.0			1	1	1	1	1	1	1	1	1	1	1	1	1	1	1	1	Poisoning - opiates
304.4			1	1	1	1	1	1	1	1	1	1	1	1	1	1	1	1	Amphetamine dependence
305.7			1	1	1	1	1	1	1	1	1	1	1	1	1	1	1	1	Amphetamine abuse
E854.2			1	1	1	1	1	1	1	1	1	1	1	1	1	1	1	1	Acc.pois.-psychostimulants
304.2			1	1	1	1	1	1	1	1	1	1	1	1	1	1	1	1	Cocaine dependence
305.6			1	1	1	1	1	1	1	1	1	1	1	1	1	1	1	1	Cocaine abuse
640.641			0.02	0.03	0.04	0.04	0.01	0.01											Antepartum haemorrhage
656.5,764,765	0.02		0.01	0.02	0.03	0.03	0.01	0.01											Low birthweight
E855.2			1	1	1	1	1	1	1	1	1	1	1	1	1	1	1	1	Acc.pois.-local anaesthetic
304.5			1	1	1	1	1	1	1	1	1	1	1	1	1	1	1	1	Hallucinogen dependence
305.3			1	1	1	1	1	1	1	1	1	1	1	1	1	1	1	1	Hallucinogen abuse
E854.1			1	1	1	1	1	1	1	1	1	1	1	1	1	1	1	1	Acc.pois.-hallucinogens
304.1			1	1	1	1	1	1	1	1	1	1	1	1	1	1	1	1	Barbiturate dependence
E851			1	1	1	1	1	1	1	1	1	1	1	1	1	1	1	1	Acc.pois.-barbiturates
E950.1			1	1	1	1	1	1	1	1	1	1	1	1	1	1	1	1	Suicide - barbiturates
E980.1			1	1	1	1	1	1	1	1	1	1	1	1	1	1	1	1	Poisoning - barbiturates
305.8			1	1	1	1	1	1	1	1	1	1	1	1	1	1	1	1	Antidepressant abuse
E852			1	1	1	1	1	1	1	1	1	1	1	1	1	1	1	1	Acc.pois.- other sedatives
E853			1	1	1	1	1	1	1	1	1	1	1	1	1	1	1	1	Acc.pois.- tranquilisers
E854.0			1	1	1	1	1	1	1	1	1	1	1	1	1	1	1	1	Acc.pois.- antidepressants
E950.2			1	1	1	1	1	1	1	1	1	1	1	1	1	1	1	1	Suicide - other sedatives
E980.2			1	1	1	1	1	1	1	1	1	1	1	1	1	1	1	1	Poisoning - other sedatives
304.6			1	1	1	1	1	1	1	1	1	1	1	1	1	1	1	1	Vol. substance dependence
E862.0, .1, .4, .9, E866.6			1	1	1	1	1	1	1	1	1	1	1	1	1	1	1	1	Acc.pois.- vol.substances
E951.1			1	1	1	1	1	1	1	1	1	1	1	1	1	1	1	1	Suicide - vol.substances
E981.1			1	1	1	1	1	1	1	1	1	1	1	1	1	1	1	1	Poisoning - vol.substances
304.8,304.9			1	1	1	1	1	1	1	1	1	1	1	1	1	1	1	1	Dependence-comb./unspec.drugs
305.4			1	1	1	1	1	1	1	1	1	1	1	1	1	1	1	1	Abuse-barb/sed/hypnotic drugs
305.9			1	1	1	1	1	1	1	1	1	1	1	1	1	1	1	1	Other/unspec.drug abuse
E850.3-E850.7,E850.9			1	1	1	1	1	1	1	1	1	1	1	1	1	1	1	1	Acc.pois.- other drugs
E950.3-E950.5			1	1	1	1	1	1	1	1	1	1	1	1	1	1	1	1	Suicide - other drugs
E962.0			1	1	1	1	1	1	1	1	1	1	1	1	1	1	1	1	Assault by pois.with drugs
E980.3-E980.5			1	1	1	1	1	1	1	1	1	1	1	1	1	1	1	1	Poisoning - other/unspec.drugs
070.2-070.3	0.29	0.29	0.29	0.29	0.29	0.29	0.29	0.29	0.29	0.29	0.29	0.29	0.29	0.29	0.29	0.29	0.29	0.29	Hepatitis B
070.4-070.5	0.42	0.42	0.42	0.42	0.42	0.42	0.42	0.42	0.42	0.42	0.42	0.42	0.42	0.42	0.42	0.42	0.42	0.42	Hepatitis non-A, non-B
279.1,042-044	0.21	0.21	0.21	0.21	0.21	0.21	0.21	0.21	0.21	0.21	0.21	0.21	0.21	0.21	0.21	0.21	0.21	0.21	AIDS/HIV
421	0.14	0.14	0.14	0.14	0.14	0.14	0.14	0.14	0.14	0.14	0.14	0.14	0.14	0.14	0.14	0.14	0.14	0.14	Infective endocarditis
292	1	1	1	1	1	1	1	1	1	1	1	1	1	1	1	1	1	1	Drug psychoses
648.3	1	1	1	1	1	1	1	1	1	1	1	1	1	1	1	1	1	1	Maternal drug dependence
760.72-760.73,779.5	1																		Newborn drug toxicity

Appendix B

Tables of cause-specific mortality

by sex and drug group

**Table B1: Estimated number of smoking-caused deaths, by year and condition
Western Australia, 1984-1994**

ICD9 codes	1984	1985	1986	1987	1988	1989	1990	1991	1992	1993	1994	Cause of death
141,143-146,148,149	23	22	25	24	23	22	21	18	28	27	24	Oropharyngeal cancer
150	16	17	30	20	26	25	22	30	32	24	29	Oesophageal cancer
151	11	13	11	11	13	9	12	11	13	9	13	Stomach cancer
154.2,154.3	0	0	0	0	0	0	1	0	1	0	2	Anal cancer
157	14	15	16	16	14	17	19	16	16	19	21	Pancreatic cancer
161	10	9	7	11	17	12	9	15	12	16	12	Laryngeal cancer
162	385	359	426	389	425	430	409	443	402	452	459	Lung cancer
179,182	-1	-1	-2	-1	-2	-1	-1	-1	-1	-2	-2	Endometrial cancer
180,233.1	5	6	5	5	5	7	6	5	4	6	6	Cervical cancer
184.4	1	1	1	0	1	0	0	1	1	1	1	Vulvar cancer
187.1-187.4	0	0	0	0	0	1	0	1	0	0	1	Penile cancer
188	15	23	21	17	17	21	14	19	17	20	19	Bladder cancer
189.0	10	10	15	10	10	12	11	11	10	11	11	Renal parench. cancer
189.1	1	0	0	0	1	2	0	1	0	1	0	Renal pelvic cancer
231	0	0	0	0	0	0	0	0	0	0	0	Resp. carcinoma in-situ
305.1	0	0	0	0	0	0	0	0	0	0	0	Tobacco abuse
332	-13	-11	-11	-10	-10	-9	-2	-11	-13	-12	-10	Parkinson's disease
410-414	387	387	416	388	393	391	371	360	351	357	343	Ischaemic heart disease
415-417	14	19	15	12	12	12	23	34	13	18	12	Pulmonary circ. disease
427	5	9	6	4	7	6	6	8	7	7	6	Cardiac dysrhythmias
428-429	22	20	23	20	21	22	24	20	18	25	19	Heart failure
430-438	107	103	115	112	106	115	106	100	112	113	120	Stroke
440-448	77	69	81	73	71	64	64	75	72	74	67	Atherosclerosis
480-487	23	19	20	16	22	28	18	22	24	22	21	Pneumonia
490-492,496	288	260	283	258	311	313	285	283	316	336	314	COPD
531-534	15	28	21	23	22	23	20	24	21	19	17	Peptic ulcer
555	1	0	0	1	0	1	0	0	1	1	1	Crohn's disease
556	0	0	0	0	0	0	0	0	0	0	0	Ulcerative colitis
633,761.4	0	0	0	0	0	0	0	0	0	0	0	Ectopic pregnancy
634,761.8	0	0	0	0	0	0	0	0	0	0	0	Spontaneous abortion
640,641,762.0,762.1	0	0	0	0	0	0	0	0	0	0	0	Antepartum haem.
642,760.0	0	0	0	0	0	0	0	0	0	0	0	Hypertension in preg.
656.5,764,765	6	5	3	5	6	5	6	5	5	5	4	Low birthweight
658.1,658.2,761.1	0	0	0	0	0	0	0	0	0	0	0	Prem. rupture of membs
798.0	19	14	18	19	19	15	21	17	9	12	9	SIDS
E890-E899	3	2	3	1	2	1	3	1	0	2	1	Fire injuries
All tobacco codes	1442	1399	1545	1424	1534	1543	1468	1510	1471	1566	1522	Total tobacco-caused

Note: Use of aetiologic fractions may give estimated numbers of deaths which are not integers, therefore, due to rounding errors, the sum of the columns may not equal the total.

**Table B2: Estimated number of male smoking-caused deaths, by year and condition
Western Australia, 1984-1994**

ICD9 codes	1984	1985	1986	1987	1988	1989	1990	1991	1992	1993	1994	Cause of death
141,143-146,148,149	19	18	20	18	19	18	18	11	23	21	20	Oropharyngeal cancer
150	12	12	23	16	21	20	18	25	26	18	23	Oesophageal cancer
151	8	10	9	8	10	6	9	9	10	7	10	Stomach cancer
154.2,154.3	0	0	0	0	0	0	0	0	0	0	2	Anal cancer
157	10	10	11	11	10	11	13	10	10	12	14	Pancreatic cancer
161	8	8	6	11	15	11	9	12	10	14	11	Laryngeal cancer
162	317	294	336	307	322	327	310	340	297	329	356	Lung cancer
179,182	0	0	0	0	0	0	0	0	0	0	0	Endometrial cancer
180,233.1	0	0	0	0	0	0	0	0	0	0	0	Cervical cancer
184.4	0	0	0	0	0	0	0	0	0	0	0	Vulvar cancer
187.1-187.4	0	0	0	0	0	1	0	1	0	0	1	Penile cancer
188	12	19	18	14	13	18	14	17	15	17	16	Bladder cancer
189.0	8	7	11	7	7	8	9	7	8	7	9	Renal parench. cancer
189.1	1	0	0	0	1	1	0	0	0	0	0	Renal pelvic cancer
231	0	0	0	0	0	0	0	0	0	0	0	Resp. carcinoma in-situ
305.1	0	0	0	0	0	0	0	0	0	0	0	Tobacco abuse
332	-11	-9	-9	-8	-7	-7	0	-9	-11	-10	-7	Parkinson's disease
410-414	302	306	322	302	305	302	290	277	271	279	268	Ischaemic heart disease
415-417	9	6	10	4	6	4	12	16	4	9	3	Pulmonary circ. disease
427	4	6	4	3	5	4	3	4	5	4	4	Cardiac dysrhythmias
428-429	15	13	15	13	16	13	16	13	12	18	13	Heart failure
430-438	66	64	73	78	66	75	66	61	70	75	77	Stroke
440-448	52	43	59	53	51	48	42	54	50	53	48	Atherosclerosis
480-487	17	13	16	12	17	21	12	17	18	17	16	Pneumonia
490-492,496	238	209	219	214	237	236	216	219	230	249	230	COPD
531-534	10	18	16	12	14	16	12	16	12	13	10	Peptic ulcer
555	0	0	0	0	0	1	0	0	0	0	0	Crohn's disease
556	0	0	0	0	0	0	0	0	0	0	0	Ulcerative colitis
633,761.4	0	0	0	0	0	0	0	0	0	0	0	Ectopic pregnancy
634,761.8	0	0	0	0	0	0	0	0	0	0	0	Spontaneous abortion
640,641,762.0,762.1	0	0	0	0	0	0	0	0	0	0	0	Antepartum haem.
642,760.0	0	0	0	0	0	0	0	0	0	0	0	Hypertension in preg.
656.5,764,765	3	3	1	3	4	3	3	2	2	3	3	Low birthweight
658.1,658.2,761.1	0	0	0	0	0	0	0	0	0	0	0	Prem. rupture of membs
798.0	9	7	11	12	11	9	11	10	7	8	4	SIDS
E890-E899	3	1	2	1	1	1	2	0	0	1	1	Fire injuries
All tobacco codes	1111	1060	1170	1090	1146	1147	1085	1114	1069	1146	1133	Total tobacco-caused

Note: Use of aetiologic fractions may give estimated numbers of deaths which are not integers, therefore, due to rounding errors, the sum of the columns may not equal the total.

Table B3: Estimated number of female smoking-caused deaths, by year and condition, Western Australia, 1984-1994

ICD9 codes	1984	1985	1986	1987	1988	1989	1990	1991	1992	1993	1994	Cause of death
141,143-146,148,149	4	4	5	6	4	4	3	7	5	6	4	Oropharyngeal cancer
150	4	5	7	4	5	5	4	5	6	6	6	Oesophageal cancer
151	3	3	2	3	3	3	3	2	3	2	3	Stomach cancer
154.2,154.3	0	0	0	0	0	0	1	0	1	0	0	Anal cancer
157	4	5	5	5	4	6	6	6	6	7	7	Pancreatic cancer
161	2	1	1	0	2	1	0	3	2	2	1	Laryngeal cancer
162	68	65	90	82	103	103	99	103	105	123	103	Lung cancer
179,182	-1	-1	-2	-1	-2	-1	-1	-1	-1	-2	-2	Endometrial cancer
180,233.1	5	6	5	5	5	7	6	5	4	6	6	Cervical cancer
184.4	1	1	1	0	1	0	0	1	1	1	1	Vulvar cancer
187.1-187.4	0	0	0	0	0	0	0	0	0	0	0	Penile cancer
188	3	4	3	3	4	3	0	2	2	3	3	Bladder cancer
189.0	2	3	4	3	3	4	2	4	2	4	2	Renal parench. cancer
189.1	0	0	0	0	0	1	0	1	0	1	0	Renal pelvic cancer
231	0	0	0	0	0	0	0	0	0	0	0	Resp. carcinoma in-situ
305.1	0	0	0	0	0	0	0	0	0	0	0	Tobacco abuse
332	-2	-2	-2	-2	-3	-2	-2	-2	-2	-2	-3	Parkinson's disease
410-414	85	81	94	86	88	89	81	83	80	78	75	Ischaemic heart disease
415-417	5	13	5	8	6	8	11	18	9	9	9	Pulmonary circ. disease
427	1	3	2	1	2	2	3	4	2	3	2	Cardiac dysrhythmias
428-429	7	7	8	7	5	9	8	7	6	7	6	Heart failure
430-438	41	39	42	34	40	40	40	39	42	38	43	Stroke
440-448	25	26	22	20	20	16	22	21	22	21	19	Atherosclerosis
480-487	6	6	4	4	5	7	6	5	6	5	5	Pneumonia
490-492,496	50	51	64	44	74	77	69	64	86	87	84	COPD
531-534	5	10	5	11	8	7	8	8	9	6	7	Peptic ulcer
555	1	0	0	1	0	0	0	0	1	1	1	Crohn's disease
556	0	0	0	0	0	0	0	0	0	0	0	Ulcerative colitis
633,761.4	0	0	0	0	0	0	0	0	0	0	0	Ectopic pregnancy
634,761.8	0	0	0	0	0	0	0	0	0	0	0	Spontaneous abortion
640,641,762.0,762.1	0	0	0	0	0	0	0	0	0	0	0	Antepartum haem.
642,760.0	0	0	0	0	0	0	0	0	0	0	0	Hypertension in preg.
656.5,764,765	3	2	2	2	2	2	3	3	3	2	1	Low birthweight
658.1,658.2,761.1	0	0	0	0	0	0	0	0	0	0	0	Prem. rupture of membs
798.0	10	7	7	7	8	6	10	7	2	4	5	SIDS
E890-E899	0	1	1	0	1	0	1	1	0	1	0	Fire injuries
All tobacco codes	331	339	375	334	388	396	383	396	402	420	389	Total tobacco-caused

Note: Use of aetiologic fractions may give estimated numbers of deaths which are not integers, therefore, due to rounding errors, the sum of the columns may not equal the total.

Table B4: Estimated number of alcohol-caused deaths, by year and condition Western Australia, 1984-1994

ICD9 codes	1984	1985	1986	1987	1988	1989	1990	1991	1992	1993	1994	Cause of death
141,143-146,148,149	7	6	7	6	7	6	5	5	7	7	7	Oropharyngeal cancer
150	2	3	5	3	5	4	3	5	5	4	5	Oesophageal cancer
155	3	4	2	3	3	4	4	4	4	5	6	Liver cancer
161	1	2	1	3	3	2	2	3	2	3	2	Laryngeal cancer
174	4	4	4	4	5	5	4	4	5	5	5	Female breast cancer
291	3	3	1	2	4	5	1	2	5	4	3	Alcoholic psychosis
303	11	14	19	12	19	9	15	21	18	27	12	Alcohol dependence
305.0	1	0	0	0	1	1	0	2	1	2	2	Alcohol abuse
345	3	3	2	3	3	3	2	3	3	2	2	Epilepsy
357.5	0	0	0	0	0	0	0	0	0	0	0	Alc. poly neuropathy
401-405	3	4	3	3	3	4	3	3	3	3	2	Hypertension
425.5	9	15	16	8	16	11	8	11	10	9	14	Alc. cardiomyopathy
427.0,427.2,427.3	0	1	0	0	0	0	0	0	0	1	1	SV cardiac dysrhyth.
430-438	55	55	59	58	55	59	53	51	57	55	61	Stroke
456.0-456.2	0	0	0	0	1	1	0	0	0	0	1	Oesophageal varices
530.7	1	0	0	0	0	0	0	0	0	0	1	Gastro-oes. haem.
535.3	0	1	0	0	0	0	0	0	0	0	0	Alcoholic gastritis
571.0-571.3	70	61	57	71	71	84	54	54	69	51	65	Alc. liver cirrhosis
574	0	0	0	0	0	0	0	0	0	0	0	Cholelithiasis
577.0	1	4	3	3	4	1	2	2	2	1	2	Acute pancreatitis
577.1	1	0	3	0	1	3	2	2	3	2	1	Chronic pancreatitis
634	0	0	0	0	0	0	0	0	0	0	0	Spontaneous abortion
656.5,764,765	0	0	0	0	0	0	0	0	0	0	0	Low birthweight
696.1	0	0	0	0	0	0	0	0	0	0	0	Psoriasis
980.0	1	0	0	0	0	0	3	1	2	0	0	Ethanol toxicity
980.1	0	0	0	0	0	0	0	0	0	0	0	Methanol toxicity
E810-E819	58	61	65	57	70	67	60	60	57	57	57	Road injuries
E860.0	1	5	3	1	1	1	8	0	0	0	0	Alcoholic poisoning
E860.1-E860.2	0	0	0	0	0	0	0	0	0	0	2	Other eth./meth. pois.
E880-E888	17	20	18	19	23	22	29	18	21	22	25	Fall injuries
E890-E899	5	3	4	2	2	2	4	3	1	3	4	Fire injuries
E910	6	6	4	11	5	6	6	9	9	8	7	Drowning
E911	7	8	13	6	5	16	12	10	4	6	11	Aspiration
E919,E920	1	0	1	0	1	1	1	1	0	0	1	Occ./machine injuries
E950-E959	19	18	17	22	23	20	23	23	23	23	24	Suicide
E960,E965-6,E968-9	11	13	9	9	9	11	13	13	14	16	16	Assault
E967	0	0	0	0	0	0	0	0	0	0	0	Child abuse
All alcohol codes	301	314	316	306	340	348	317	310	325	316	339	Total alcohol-caused

Note: Use of aetiologic fractions may give estimated numbers of deaths which are not integers, therefore, due to rounding errors, the sum of the columns may not equal the total.

Table B5: Estimated number of male alcohol-caused deaths, by year and condition Western Australia, 1984-1994

ICD9 codes	1984	1985	1986	1987	1988	1989	1990	1991	1992	1993	1994	Cause of death
141,143-146,148,149	6	5	6	5	6	5	5	4	6	6	6	Oropharyngeal cancer
150	2	2	4	2	4	3	3	4	4	3	4	Oesophageal cancer
155	2	3	2	3	2	3	3	3	3	4	4	Liver cancer
161	1	2	1	3	3	2	2	2	2	3	2	Laryngeal cancer
174	0	0	0	0	0	0	0	0	0	0	0	Female breast cancer
291	2	3	1	2	2	4	1	1	5	2	3	Alcoholic psychosis
303	10	13	15	8	18	7	12	14	17	18	11	Alcohol dependence
305.0	0	0	0	0	0	1	0	1	0	2	1	Alcohol abuse
345	2	2	1	2	2	2	1	2	2	1	1	Epilepsy
357.5	0	0	0	0	0	0	0	0	0	0	0	Alc. poly neuropathy
401-405	2	2	2	2	2	2	2	2	2	2	1	Hypertension
425.5	8	15	14	8	13	10	7	10	9	8	12	Alc. cardiomyopathy
427.0,427.2,427.3	0	0	0	0	0	0	0	0	0	0	0	SV cardiac dysrhyth.
430-438	25	25	27	30	25	28	24	22	25	27	27	Stroke
456.0-456.2	0	0	0	0	1	1	0	0	0	0	1	Oesophageal varices
530.7	1	0	0	0	0	0	0	0	0	0	1	Gastro-oes. haem.
535.3	0	1	0	0	0	0	0	0	0	0	0	Alcoholic gastritis
571.0-571.3	54	51	38	56	59	70	37	43	52	37	39	Alc. liver cirrhosis
574	0	0	0	0	0	0	0	0	0	0	0	Cholelithiasis
577.0	1	1	2	2	3	0	1	1	2	1	1	Acute pancreatitis
577.1	0	0	1	0	1	1	2	1	3	2	1	Chronic pancreatitis
634	0	0	0	0	0	0	0	0	0	0	0	Spontaneous abortion
656.5,764,765	0	0	0	0	0	0	0	0	0	0	0	Low birthweight
696.1	0	0	0	0	0	0	0	0	0	0	0	Psoriasis
980.0	0	0	0	0	0	0	3	0	0	0	0	Ethanol toxicity
980.1	0	0	0	0	0	0	0	0	0	0	0	Methanol toxicity
E810-E819	51	53	54	48	61	57	50	51	44	49	48	Road injuries
E860.0	1	4	3	1	1	0	7	0	0	0	0	Alcoholic poisoning
E860.1-E860.2	0	0	0	0	0	0	0	0	0	0	2	Other eth./meth. pois.
E880-E888	7	10	7	6	10	10	13	8	10	10	11	Fall injuries
E890-E899	4	1	3	1	1	2	3	1	1	2	3	Fire injuries
E910	6	5	4	10	4	6	5	7	7	6	6	Drowning
E911	6	7	13	4	2	11	7	4	2	3	6	Aspiration
E919,E920	1	0	1	0	1	1	1	1	0	0	1	Occ./machine injuries
E950-E959	16	15	15	19	20	18	20	20	20	20	22	Suicide
E960,E965-6,E968-9	8	6	6	6	4	8	6	6	7	10	8	Assault
E967	0	0	0	0	0	0	0	0	0	0	0	Child abuse
All alcohol codes	216	226	220	218	245	252	215	208	223	216	222	Total alcohol-caused

Note: Use of aetiologic fractions may give estimated numbers of deaths which are not integers, therefore, due to rounding errors, the sum of the columns may not equal the total.

Table B6: Estimated number of female alcohol-caused deaths, by year and condition Western Australia, 1984-1994

ICD9 codes	1984	1985	1986	1987	1988	1989	1990	1991	1992	1993	1994	Cause of death
141,143-146,148,149	1	1	1	1	1	1	0	1	1	1	1	Oropharyngeal cancer
150	0	1	1	1	1	1	0	1	1	1	1	Oesophageal cancer
155	1	1	0	0	1	1	1	1	1	1	2	Liver cancer
161	0	0	0	0	0	0	0	1	0	0	0	Laryngeal cancer
174	4	4	4	4	5	5	4	4	5	5	5	Female breast cancer
291	1	0	0	0	2	1	0	1	0	2	0	Alcoholic psychosis
303	1	1	4	4	1	2	3	7	1	9	1	Alcohol dependence
305.0	1	0	0	0	1	0	0	1	1	0	1	Alcohol abuse
345	1	1	1	1	1	1	1	1	1	1	1	Epilepsy
357.5	0	0	0	0	0	0	0	0	0	0	0	Alc. poly neuropathy
401-405	1	2	1	1	1	2	1	1	1	1	1	Hypertension
425.5	1	0	2	0	3	1	1	1	1	1	2	Alc. cardiomyopathy
427.0,427.2,427.3	0	1	0	0	0	0	0	0	0	1	1	SV cardiac dysrhyth.
430-438	30	30	32	28	30	31	29	29	32	28	34	Stroke
456.0-456.2	0	0	0	0	0	0	0	0	0	0	0	Oesophageal varices
530.7	0	0	0	0	0	0	0	0	0	0	0	Gastro-oes. haem.
535.3	0	0	0	0	0	0	0	0	0	0	0	Alcoholic gastritis
571.0-571.3	16	10	19	15	12	14	17	11	17	14	26	Alc. liver cirrhosis
574	0	0	0	0	0	0	0	0	0	0	0	Cholelithiasis
577.0	0	3	1	1	1	1	1	1	0	0	1	Acute pancreatitis
577.1	1	0	2	0	0	2	0	1	0	0	0	Chronic pancreatitis
634	0	0	0	0	0	0	0	0	0	0	0	Spontaneous abortion
656.5,764,765	0	0	0	0	0	0	0	0	0	0	0	Low birthweight
696.1	0	0	0	0	0	0	0	0	0	0	0	Psoriasis
980.0	1	0	0	0	0	0	0	1	2	0	0	Ethanol toxicity
980.1	0	0	0	0	0	0	0	0	0	0	0	Methanol toxicity
E810-E819	7	8	11	9	9	10	10	9	13	8	9	Road injuries
E860.0	0	1	0	0	0	1	1	0	0	0	0	Alcoholic poisoning
E860.1-E860.2	0	0	0	0	0	0	0	0	0	0	0	Other eth./meth. pois.
E880-E888	10	10	11	13	13	12	16	10	11	12	14	Fall injuries
E890-E899	1	2	1	1	1	0	1	2	0	1	1	Fire injuries
E910	0	1	0	1	1	0	1	2	2	2	1	Drowning
E911	1	1	0	2	3	5	5	6	2	3	5	Aspiration
E919,E920	0	0	0	0	0	0	0	0	0	0	0	Occ./machine injuries
E950-E959	3	3	2	3	3	2	3	3	3	3	2	Suicide
E960,E965-6,E968-9	3	7	3	3	5	3	7	7	7	6	8	Assault
E967	0	0	0	0	0	0	0	0	0	0	0	Child abuse
All alcohol codes	85	88	96	88	95	96	102	102	102	100	117	Total alcohol-caused

Note: Use of aetiologic fractions may give estimated numbers of deaths which are not integers, therefore, due to rounding errors, the sum of the columns may not equal the total.

Table B7: Estimated number of deaths caused by other drug use, by year and condition, Western Australia, 1984-1994

ICD9 codes	1984	1985	1986	1987	1988	1989	1990	1991	1992	1993	1994	Cause of death
304.3	0	0	0	0	0	0	0	0	0	0	0	Cannabis dependence
305.2	0	0	0	0	0	0	0	0	0	0	0	Cannabis abuse
304.0,304.7	9	20	14	10	12	15	1	0	5	4	19	Opiate dependence
305.5	0	0	0	0	0	0	0	0	0	0	0	Opiate abuse
E850.0-E850.2,E850.8	4	7	2	2	11	3	15	14	16	22	25	Acc.pois.-opiates
E950.0	6	0	4	4	2	5	1	1	3	2	2	Suicide - opiates
E980.0	1	0	0	0	0	0	3	1	2	0	0	Poisoning - opiates
304.4	0	0	0	0	0	0	0	0	0	0	0	Amphetamine dependence
305.7	0	0	0	0	0	0	0	0	0	0	0	Amphetamine abuse
E854.2	0	0	0	0	0	0	1	3	0	1	0	Acc.pois.-psychostimulants
304.2	0	0	0	0	0	0	0	0	0	0	0	Cocaine dependence
305.6	0	0	0	0	0	0	0	0	0	0	0	Cocaine abuse
640,641	0	0	0	0	0	0	0	0	0	0	0	Antepartum haemorrhage
656.5,764,765	1	0	0	0	1	0	0	0	0	0	0	Low birthweight
E855.2	0	0	0	0	0	0	0	0	0	0	0	Acc.pois.-local anaesthetic
304.5	0	0	0	0	0	0	0	0	0	0	0	Hallucinogen dependence
305.3	0	0	0	0	0	0	0	0	0	0	0	Hallucinogen abuse
E854.1	0	0	0	0	0	0	0	1	1	1	0	Acc.pois.-hallucinogens
304.1	1	0	0	0	0	0	0	0	0	0	0	Barbiturate dependence
E851	0	0	0	0	0	0	0	0	0	0	0	Acc.pois.-barbiturates
E950.1	8	5	6	4	0	3	0	1	1	1	0	Suicide - barbiturates
E980.1	0	0	0	0	0	0	0	0	0	0	0	Poisoning - barbiturates
305.8	0	0	0	0	0	0	0	0	0	0	0	Antidepressant abuse
E852	5	3	3	2	1	0	1	0	0	0	4	Acc.pois.- other sedatives
E853	2	2	2	3	1	1	0	1	0	5	6	Acc.pois.- tranquilisers
E854.0	2	1	2	6	3	3	4	6	4	5	19	Acc.pois.- antidepressants
E950.2	6	4	2	1	0	0	0	0	2	1	0	Suicide - other sedatives
E980.2	0	0	0	0	0	0	0	0	0	0	0	Poisoning - other sedatives
304.6	0	1	4	3	1	3	5	3	0	0	1	Vol. substance dependence
E862.0, .1, .4, .9, E866.6	1	0	1	0	0	0	0	0	1	3	2	Acc.pois.- vol.substances
E951.1	0	0	0	1	0	0	0	0	0	0	0	Suicide - vol.substances
E981.1	0	0	0	0	0	0	0	0	0	0	0	Poisoning - vol.substances
304.8,304.9	0	1	7	2	3	0	0	0	0	0	2	Dependence-comb./unspec.drugs
305.4	0	0	0	0	0	0	0	0	0	0	0	Abuse-barb/sed/hypnotic drugs
305.9	0	0	0	0	0	0	0	0	0	0	0	Other/unspec.drug abuse
E850.3-E850.7,E850.9	1	1	1	1	0	0	0	2	7	1	1	Acc.pois.- other drugs
E950.3-E950.5	13	15	15	23	13	13	24	20	14	22	17	Suicide - other drugs
E962.0	0	0	0	0	0	0	1	0	0	0	0	Assault by pois.with drugs
E980.3-E980.5	0	1	1	0	0	3	0	2	3	0	1	Poisoning - other/unspec.drugs
070.2-070.3	0	1	1	1	1	1	1	1	1	1	1	Hepatitis B
070.4-070.5	0	0	0	0	0	0	0	0	0	1	1	Hepatitis non-A, non-B
279.1,042-044	0	0	0	0	0	1	0	1	0	0	1	AIDS/HIV
421	0	0	0	0	0	0	0	0	0	0	0	Infective endocarditis
292	0	0	0	0	0	0	0	0	0	0	0	Drug psychoses
648.3	0	0	0	0	0	0	0	0	0	0	0	Maternal drug dependence
760.72-760.73,779.5	0	0	0	0	0	0	0	0	0	0	0	Newborn drug toxicity
All other drug caused	60	62	66	63	49	51	58	57	61	71	102	All other drug caused

Table B8: Estimated number of male deaths caused by other drug use, by year and condition, Western Australia, 1984-1994

ICD9 codes	1984	1985	1986	1987	1988	1989	1990	1991	1992	1993	1994	Cause of death
304.3	0	0	0	0	0	0	0	0	0	0	0	Cannabis dependence
305.2	0	0	0	0	0	0	0	0	0	0	0	Cannabis abuse
304.0,304.7	5	13	9	9	9	13	0	0	2	4	18	Opiate dependence
305.5	0	0	0	0	0	0	0	0	0	0	0	Opiate abuse
E850.0-E850.2,E850.8	2	5	2	2	7	2	15	12	11	16	21	Acc.pois.-opiates
E950.0	5	0	1	2	1	3	0	1	2	0	2	Suicide - opiates
E980.0	0	0	0	0	0	0	3	0	0	0	0	Poisoning - opiates
304.4	0	0	0	0	0	0	0	0	0	0	0	Amphetamine dependence
305.7	0	0	0	0	0	0	0	0	0	0	0	Amphetamine abuse
E854.2	0	0	0	0	0	0	0	3	0	1	0	Acc.pois.-psychostimulants
304.2	0	0	0	0	0	0	0	0	0	0	0	Cocaine dependence
305.6	0	0	0	0	0	0	0	0	0	0	0	Cocaine abuse
640,641	0	0	0	0	0	0	0	0	0	0	0	Antepartum haemorrhage
656.5,764,765	0	0	0	0	0	0	0	0	0	0	0	Low birthweight
E855.2	0	0	0	0	0	0	0	0	0	0	0	Acc.pois.-local anaesthetic
304.5	0	0	0	0	0	0	0	0	0	0	0	Hallucinogen dependence
305.3	0	0	0	0	0	0	0	0	0	0	0	Hallucinogen abuse
E854.1	0	0	0	0	0	0	0	1	1	1	0	Acc.pois.-hallucinogens
304.1	0	0	0	0	0	0	0	0	0	0	0	Barbiturate dependence
E851	0	0	0	0	0	0	0	0	0	0	0	Acc.pois.-barbiturates
E950.1	5	3	3	2	0	2	0	1	1	0	0	Suicide - barbiturates
E980.1	0	0	0	0	0	0	0	0	0	0	0	Poisoning - barbiturates
305.8	0	0	0	0	0	0	0	0	0	0	0	Antidepressant abuse
E852	2	1	0	0	1	0	0	0	0	0	0	Acc.pois.- other sedatives
E853	0	1	2	1	1	1	0	0	0	5	1	Acc.pois.- tranquilisers
E854.0	0	0	1	2	1	0	3	2	3	1	10	Acc.pois.- antidepressants
E950.2	3	3	1	1	0	0	0	0	1	0	0	Suicide - other sedatives
E980.2	0	0	0	0	0	0	0	0	0	0	0	Poisoning - other sedatives
304.6	0	1	4	3	1	3	5	3	0	0	1	Vol. substance dependence
E862.0, .1, .4, .9, E866.6	1	0	1	0	0	0	0	0	0	3	2	Acc.pois.- vol.substances
E951.1	0	0	0	1	0	0	0	0	0	0	0	Suicide - vol.substances
E981.1	0	0	0	0	0	0	0	0	0	0	0	Poisoning - vol.substances
304.8,304.9	0	0	5	2	3	0	0	0	0	0	1	Dependence-comb./unspec.drugs
305.4	0	0	0	0	0	0	0	0	0	0	0	Abuse-barb/sed/hypnotic drugs
305.9	0	0	0	0	0	0	0	0	0	0	0	Other/unspec.drug abuse
E850.3-E850.7,E850.9	0	1	0	1	0	0	0	2	5	1	1	Acc.pois.- other drugs
E950.3-E950.5	8	6	10	16	6	8	14	8	7	12	6	Suicide - other drugs
E962.0	0	0	0	0	0	0	0	0	0	0	0	Assault by pois.with drugs
E980.3-E980.5	0	0	0	0	0	2	0	0	1	0	0	Poisoning - other/unspec.drugs
070.2-070.3	0	1	1	1	1	1	1	1	1	0	1	Hepatitis B
070.4-070.5	0	0	0	0	0	0	0	0	0	1	0	Hepatitis non-A, non-B
279.1,042-044	0	0	0	0	0	0	0	0	0	0	0	AIDS/HIV
421	0	0	0	0	0	0	0	0	0	0	0	Infective endocarditis
292	0	0	0	0	0	0	0	0	0	0	0	Drug psychoses
648.3	0	0	0	0	0	0	0	0	0	0	0	Maternal drug dependence
760.72-760.73,779.5	0	0	0	0	0	0	0	0	0	0	0	Newborn drug toxicity
All other drug caused	32	35	40	43	31	35	41	34	35	46	65	All other drug caused

Table B9: Estimated number of female deaths caused by other drug use, by year and condition, Western Australia, 1984-1994

ICD9 codes	1984	1985	1986	1987	1988	1989	1990	1991	1992	1993	1994	Cause of death
304.3	0	0	0	0	0	0	0	0	0	0	0	Cannabis dependence
305.2	0	0	0	0	0	0	0	0	0	0	0	Cannabis abuse
304.0,304.7	4	7	5	1	3	2	1	0	3	0	1	Opiate dependence
305.5	0	0	0	0	0	0	0	0	0	0	0	Opiate abuse
E850.0-E850.2,E850.8	2	2	0	0	4	1	0	2	5	6	4	Acc.pois.-opiates
E950.0	1	0	3	2	1	2	1	0	1	2	0	Suicide - opiates
E980.0	1	0	0	0	0	0	0	1	2	0	0	Poisoning - opiates
304.4	0	0	0	0	0	0	0	0	0	0	0	Amphetamine dependence
305.7	0	0	0	0	0	0	0	0	0	0	0	Amphetamine abuse
E854.2	0	0	0	0	0	0	1	0	0	0	0	Acc.pois.-psychostimulants
304.2	0	0	0	0	0	0	0	0	0	0	0	Cocaine dependence
305.6	0	0	0	0	0	0	0	0	0	0	0	Cocaine abuse
640,641	0	0	0	0	0	0	0	0	0	0	0	Antepartum haemorrhage
656.5,764,765	0	0	0	0	0	0	0	0	0	0	0	Low birthweight
E855.2	0	0	0	0	0	0	0	0	0	0	0	Acc.pois.-local anaesthetic
304.5	0	0	0	0	0	0	0	0	0	0	0	Hallucinogen dependence
305.3	0	0	0	0	0	0	0	0	0	0	0	Hallucinogen abuse
E854.1	0	0	0	0	0	0	0	0	0	0	0	Acc.pois.-hallucinogens
304.1	1	0	0	0	0	0	0	0	0	0	0	Barbiturate dependence
E851	0	0	0	0	0	0	0	0	0	0	0	Acc.pois.-barbiturates
E950.1	3	2	3	2	0	1	0	0	0	1	0	Suicide - barbiturates
E980.1	0	0	0	0	0	0	0	0	0	0	0	Poisoning - barbiturates
305.8	0	0	0	0	0	0	0	0	0	0	0	Antidepressant abuse
E852	3	2	3	2	0	0	1	0	0	0	4	Acc.pois.- other sedatives
E853	2	1	0	2	0	0	0	1	0	0	5	Acc.pois.- tranquilisers
E854.0	2	1	1	4	2	3	1	4	1	4	9	Acc.pois.- antidepressants
E950.2	3	1	1	0	0	0	0	0	1	1	0	Suicide - other sedatives
E980.2	0	0	0	0	0	0	0	0	0	0	0	Poisoning - other sedatives
304.6	0	0	0	0	0	0	0	0	0	0	0	Vol. substance dependence
E862.0, .1, .4, .9, E866.6	0	0	0	0	0	0	0	0	1	0	0	Acc.pois.- vol.substances
E951.1	0	0	0	0	0	0	0	0	0	0	0	Suicide - vol.substances
E981.1	0	0	0	0	0	0	0	0	0	0	0	Poisoning - vol.substances
304.8,304.9	0	1	2	0	0	0	0	0	0	0	1	Dependence-comb./unspec.drugs
305.4	0	0	0	0	0	0	0	0	0	0	0	Abuse-barb/sed/hypnotic drugs
305.9	0	0	0	0	0	0	0	0	0	0	0	Other/unspec.drug abuse
E850.3-E850.7,E850.9	1	0	1	0	0	0	0	0	2	0	0	Acc.pois.- other drugs
E950.3-E950.5	5	9	5	7	7	5	10	12	7	10	11	Suicide - other drugs
E962.0	0	0	0	0	0	0	1	0	0	0	0	Assault by pois.with drugs
E980.3-E980.5	0	1	1	0	0	1	0	2	2	0	1	Poisoning - other/unspec.drugs
070.2-070.3	0	0	0	0	1	0	1	0	0	1	0	Hepatitis B
070.4-070.5	0	0	0	0	0	0	0	0	0	0	1	Hepatitis non-A, non-B
279.1,042-044	0	0	0	0	0	0	0	0	0	0	1	AIDS/HIV
421	0	0	0	0	0	0	0	0	0	0	0	Infective endocarditis
292	0	0	0	0	0	0	0	0	0	0	0	Drug psychoses
648.3	0	0	0	0	0	0	0	0	0	0	0	Maternal drug dependence
760.72-760.73,779.5	0	0	0	0	0	0	0	0	0	0	0	Newborn drug toxicity
All other drug caused	28	27	26	20	18	16	17	22	26	26	38	All other drug caused