



Drug Related Psychiatric Inpatient Mental Disorders Due to the Use of Psychoactive Drugs (excluding alcohol) Western Australia: 2000 - 2006

Introduction

This report summarises annual and quarterly trends in inpatient treatment episodes at both private and public mental health clinics and hospitals in Western Australia (WA) from July 2000 to December 2006.

These episodes involve disorders from within the broad diagnostic group referred to as *Mental and behavioural disorders due to psychoactive substance use*, covered by the ICD-10 codes F10-F19. The ten disorders within this group are all attributable to the use of one or more psychoactive substances, which may or may not have been medically prescribed, of which seven were specifically examined for this study.

As this analysis is primarily concerned with admissions involving the use of illicit drugs such as cannabis, heroin and stimulants (ie amphetamines and methylamphetamine), it excludes the F10 (disorders due to use of alcohol), the F17 (tobacco) and F18 (volatile solvents) diagnostic groups.

This analysis involves a completed occasion of service where a principal diagnosis (ie underlying cause) was that the disorder was due to the use of either opioids (F11), cannabinoids (F12), sedatives or hypnotics (F13), cocaine (F14), other stimulants including caffeine (F15), hallucinogens (F16), or multiple drug use and use of other psychoactive substances (F19).

Overview

Figure 1 (page 2) provides an overview of trends in the proportion for each drug group of total annual inpatient treatment episodes. (Because of the very small number of episodes for cocaine and hallucinogens these have been combined in the 'other drug' group.) *Note: Data for the year 2000 which covers from July to December has been omitted from this analysis of annual trends.*

Annual trends

Overall, annual episodes decreased from 1,313 in 2001 to 1,113 in 2006, a decline of 15.2% over the six year period (Table 1). Over the six year period trends for annual admissions were as follows:

- cannabis increased by 11.7% from 154 in 2001 to 172 in 2006;
- opioids decreased by 42.2% from 249 in 2001 to 144 in 2006;
- sedatives/hypnotics decreased by 11.3% from 62 in 2001 to 55 in 2006;
- stimulants decreased by 14.5% from 449 in 2001 to 384 in 2006; and
- multiple drugs decreased by 10.5% from 391 in 2001 to 350 in 2006.

Version: June 2007

Table 1
Annual drug related psychiatric inpatient treatment episodes by drug group, 2001 - 2006

	Cannabis (F12)		Opioids (F11)		Sedatives/hypnotics (F13)		Stimulants (F15)		Multiple drugs (F19)		Other drugs (F14, F16)		All drugs
	n	%	n	%	n	%	n	%	n	%	n	%	
2001	154	11.7	249	19.0	62	4.7	449	34.2	391	29.8	8	0.6	1,313
2002	205	17.3	190	16.1	55	4.7	350	29.6	376	31.8	6	0.5	1,182
2003	170	14.5	176	15.0	50	4.3	428	36.6	337	28.8	9	0.8	1,170
2004	205	16.8	186	15.3	63	5.2	443	36.4	307	25.2	13	1.1	1,217
2005	193	17.2	220	19.6	47	4.2	368	32.8	283	25.2	11	1.0	1,122
2006	172	15.5	144	12.9	55	4.9	384	34.5	350	31.4	8	0.7	1,113

Source: Mental Health Information System, Department of Health.

Table 1 also has trends from 2001 to 2006 in the proportion of total annual episodes by diagnostic group, as follows:

- disorders due to cannabis increased from 11.7% to 15.5%;
- disorders due to opioids decreased from 19.0% to 12.9%;
- disorders due to sedatives/hypnotics accounted for about 5% of all episodes per year;
- disorders due to stimulants constituted about one third of all episodes per year; and
- disorders due to multiple drugs increased from 29.8% to 31.4%.

Throughout the period from the September quarter 2000 to the December quarter 2006 the majority of episodes involved males, who accounted for approximately two thirds of all episodes (Figure 2, page 3).

The quarterly trends from the September quarter 2000 to the December quarter 2006 involving opioids (F11), cannabis (F12) and stimulants (F15) in Figure 3 (page 4) show that:

- up to the March quarter 2001 there were about 120 opioid related episodes per quarter, which dropped sharply to about 40 episodes in mid 2001 and then continued to gradually decline, to about 30 episodes by the December quarter 2006;
- there were between 40 to 50 cannabis related episodes per quarter; and
- there were between 80 to 120 stimulant related episodes per quarter, except for two peaks in the September quarter 2001 and June quarter 2004.

Quarterly trends in episodes involving sedatives/hypnotics (F13), cocaine (F14), hallucinogens (F16) and multiple drugs (F19) are shown in Figure 4 (page 4). It can be seen that the most frequent drug involved the multiple drugs group, which increased from 97 episodes in the September

quarter 2000 to 47 in the June quarter 2005, gradually increased to 106 in the September quarter 2006 and then fell to 78 in the December quarter 2006. Compared to the multiple drug group, there were very few quarterly episodes involving either the sedative/hypnotic, hallucinogen or cocaine groups.

Age and sex characteristics

This section summarises age and sex related patterns with respect to opioid, cannabis, stimulant and multiple drug related disorders. More detailed information for these and other groups is contained in the Appendix of data tables and figures separately available from the Drug and Alcohol Office website.

Opioid disorders (F11)

There was a sharp decline in mid 2001 of opioid related episodes, which remained relatively constant up to early 2005 and have since then declined. For most quarters since mid 2001 there has been more males than females in treatment and the most frequent episodes involving the 25 to 34 age group.

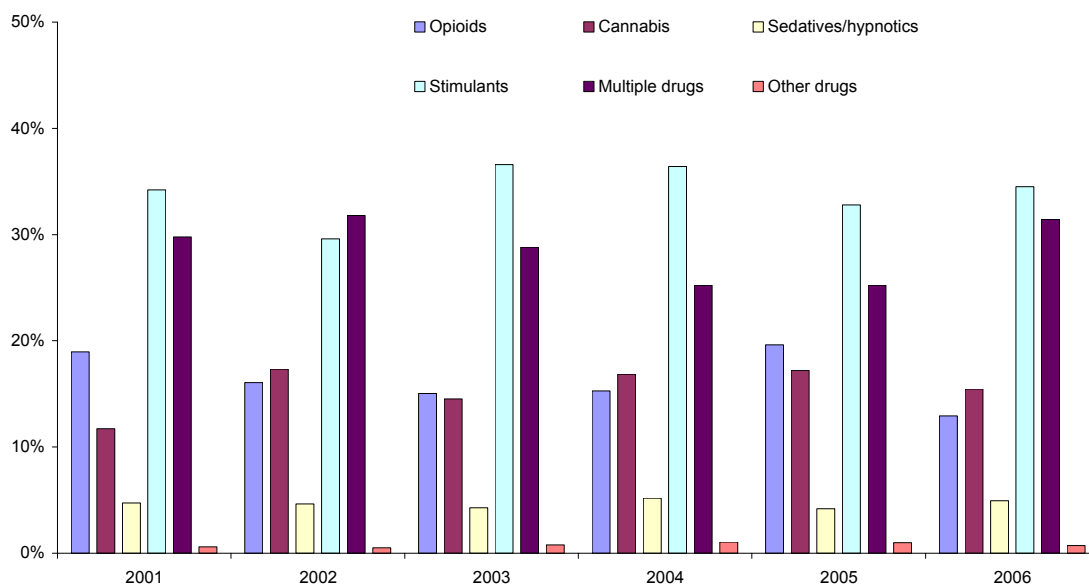
Cannabis disorders (F12)

For cannabis related mental disorders there was a greater proportion of male compared to female episodes - with about two out of three episodes being males and most episodes involving young adults from the 15 to 24 and 25 to 34 age groups.

Stimulant disorders (F15)

For stimulant related disorders there was a greater number of male than female episodes throughout the period, with the most frequent age group involving those aged 25 to 34. The second most frequent age group was those aged 15 to 24.

Figure 1
Proportion (%) annual drug related psychiatric inpatient treatment episodes by drug group 2001 - 2006



Multiple drug disorders (F19)

For multiple drug related disorders there was a higher proportion of male than female episodes throughout the period up to the December quarter 2006. Quarterly episodes declined from the September quarter 2000 to the June quarter 2005 and since then there has been an increase in episodes occurring up to the present.

Sub diagnostic groups

This section identifies trends within the various sub diagnostic groups for cannabis, stimulant and multiple drug related disorders. More detailed information for these and other groups is contained in the Appendix of data tables and figures separately available from the Drug and Alcohol Office website.

Cannabis disorders (F12.0 - F12.9)

Throughout the period there was a dominant pattern that the majority of cannabis related episodes involved the psychotic disorder (F12.5) sub diagnostic group.

However, whilst quarterly episodes involving the other sub diagnostic groups (ie acute intoxication, harmful use, dependent syndrome and other diagnoses) remained relatively constant, there was a marked increase in episodes involving the psychotic disorder (F12.5) sub diagnostic group from mid 2000 to the end of 2006.

Stimulant disorders (F15.0 - F15.9)

From the September quarter 2000 up to the end of 2006 there were relatively few quarterly stimulant related episodes for acute intoxication, harmful use, dependent syndrome, withdrawal and other diagnoses.

The majority of stimulant related episodes involved the psychotic disorder (F15.5) sub diagnostic group.

Multiple drug disorders (F19.0 - F19.9)

Overall, with respect to multiple drug related episodes, the most frequent sub diagnostic group was the psychotic disorder group (F19.5). There was some decline in the number of quarterly episodes over the period involving both the psychotic disorder and other sub diagnostic groups, ie acute intoxication (F19.0), harmful use (F19.1), dependent syndrome (F19.2) and other diagnoses (F19.3 - F19.4, F19.6 - F19.9).

Figure 2
Quarterly drug related psychiatric inpatient treatment episodes by sex
September quarter 2000 - December quarter 2006

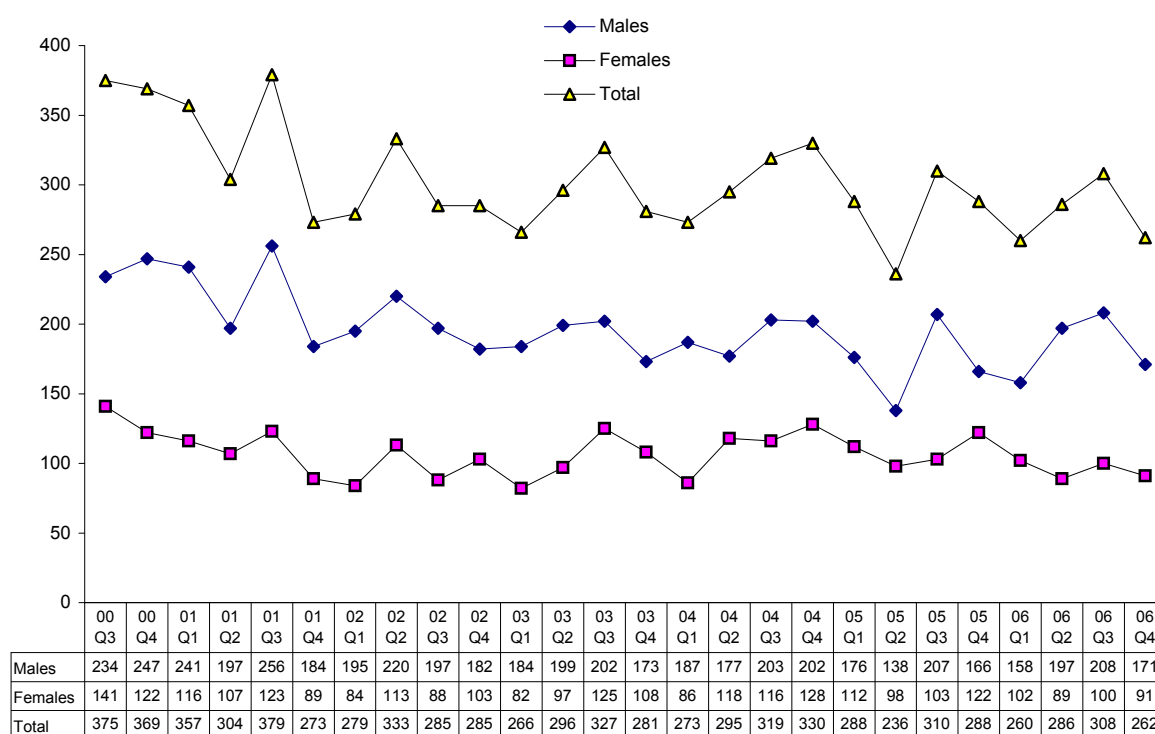


Figure 3
Quarterly drug related psychiatric inpatient treatment episodes - opioids, cannabis & stimulants, September quarter 2000 - December quarter 2006

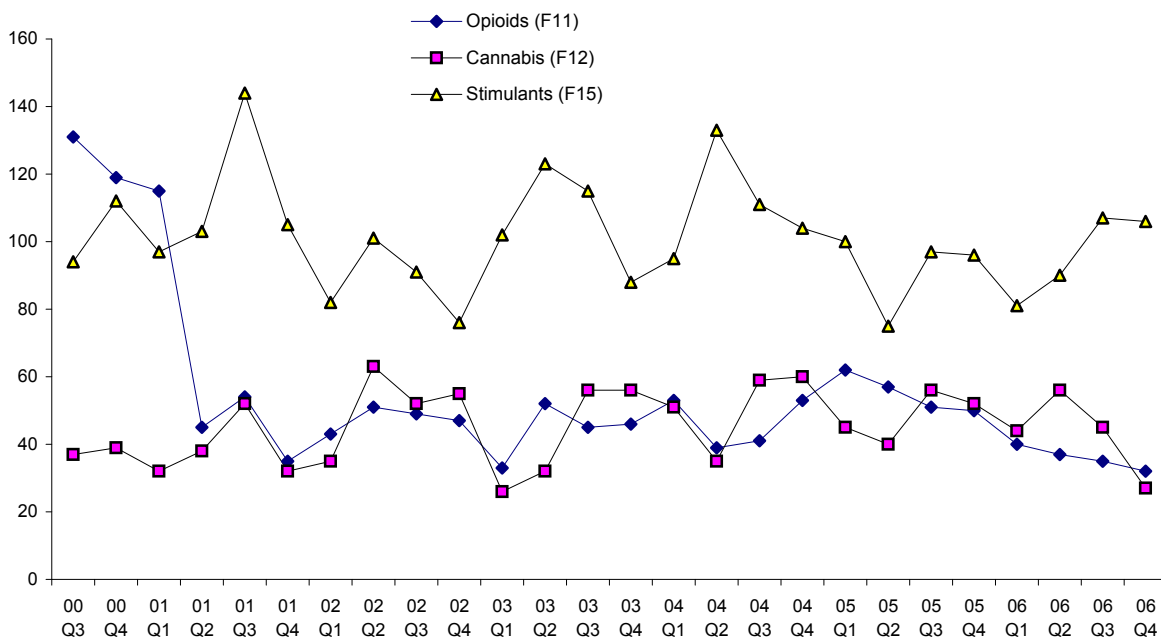
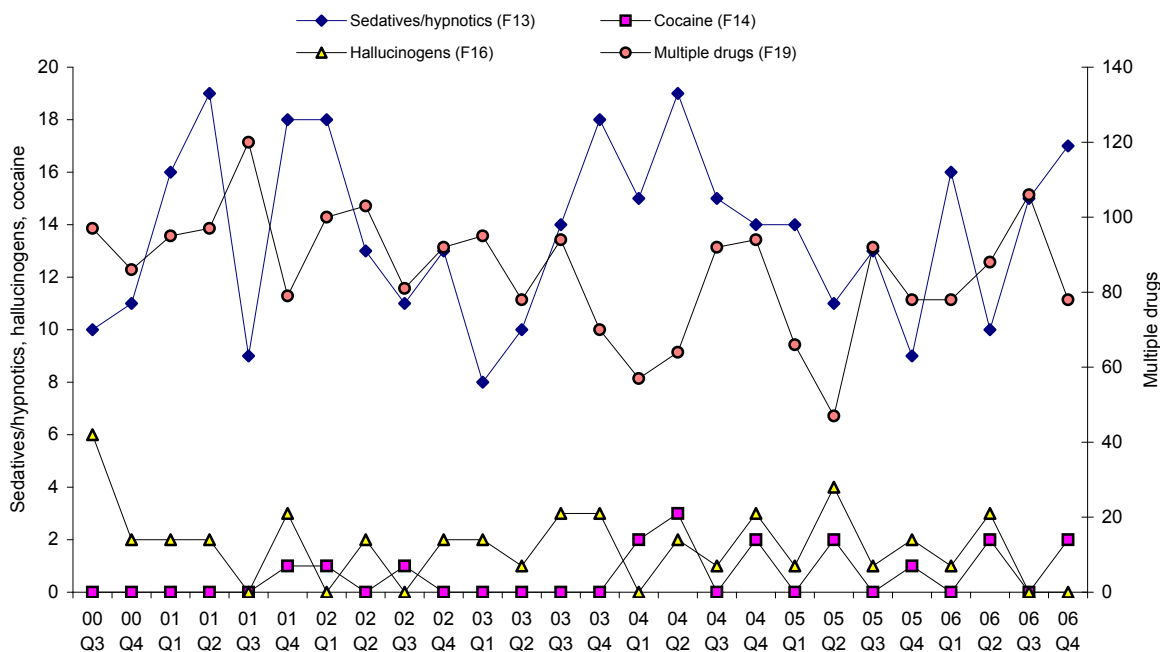


Figure 4
Quarterly drug related psychiatric inpatient treatment episodes - sedatives/hypnotics, hallucinogens, cocaine & multiple drugs, September quarter 2000 - December quarter 2006



This bulletin was jointly published by the Drug and Alcohol Office and the Mental Health Information System of the Department of Health.

To view or download detailed data tables and figures and a description of the methodology associated with this report go to the Drug and Alcohol Office website here.

This publication is available online at <http://www.dao.health.wa.gov.au>

Data Tables & Figures: Drug Related Psychiatric Inpatient Mental Disorders, WA: 2000 - 2006

Table A-1
Annual drug related inpatient treatment episodes by drug group & sex, 2000 - 2006

	Cannabis	Opioids	Sedatives/ hypnotics	Stimu- lants	Multiple drugs	Other drugs	All drugs
Males							
2000 (July-Dec)	55	155	9	135	123	4	481
2001	117	142	33	287	293	6	878
2002	151	105	30	227	275	6	794
2003	124	94	17	282	234	7	758
2004	136	106	30	279	207	11	769
2005	124	129	22	230	174	8	687
2006	130	87	20	257	233	4	731
Females							
2000 (July-Dec)	21	95	12	71	60	4	263
2001	37	107	29	162	98	2	435
2002	54	85	25	123	101	-	388
2003	46	82	33	146	103	2	412
2004	69	80	33	164	100	2	448
2005	69	91	25	138	109	3	435
2006	42	57	35	127	117	4	382
Persons							
2000 (July-Dec)	76	250	21	206	183	8	744
2001	154	249	62	449	391	8	1,313
2002	205	190	55	350	376	6	1,182
2003	170	176	50	428	337	9	1,170
2004	205	186	63	443	307	13	1,217
2005	193	220	47	368	283	11	1,122
2006	172	144	55	384	350	8	1,113
(per cent row)							
Males							
2000 (July-Dec)	11.4	32.2	1.9	28.1	25.6	0.8	100.0
2001	13.3	16.2	3.8	32.7	33.4	0.7	100.0
2002	19.0	13.2	3.8	28.6	34.6	0.8	100.0
2003	16.4	12.4	2.2	37.2	30.9	0.9	100.0
2004	17.7	13.8	3.9	36.3	26.9	1.4	100.0
2005	18.0	18.8	3.2	33.5	25.3	1.2	100.0
2006	17.8	11.9	2.7	35.2	31.9	0.5	100.0
Females							
2000 (July-Dec)	8.0	36.1	4.6	27.0	22.8	1.5	100.0
2001	8.5	24.6	6.7	37.2	22.5	0.5	100.0
2002	13.9	21.9	6.4	31.7	26.0		100.0
2003	11.2	19.9	8.0	35.4	25.0	0.5	100.0
2004	15.4	17.9	7.4	36.5	22.3	0.4	100.0
2005	15.9	20.9	5.7	31.7	25.1	0.7	100.0
2006	11.0	14.9	9.2	33.2	30.6	1.0	100.0

Source: Mental Health Information System, Department of Health.

Note: Other drugs includes cocaine and hallucinogens.

Data Tables & Figures: Opioid Related Mental Disorders

Figure A-1
Quarterly opioid related inpatient treatment episodes by sex
September quarter 2000 - December 2006

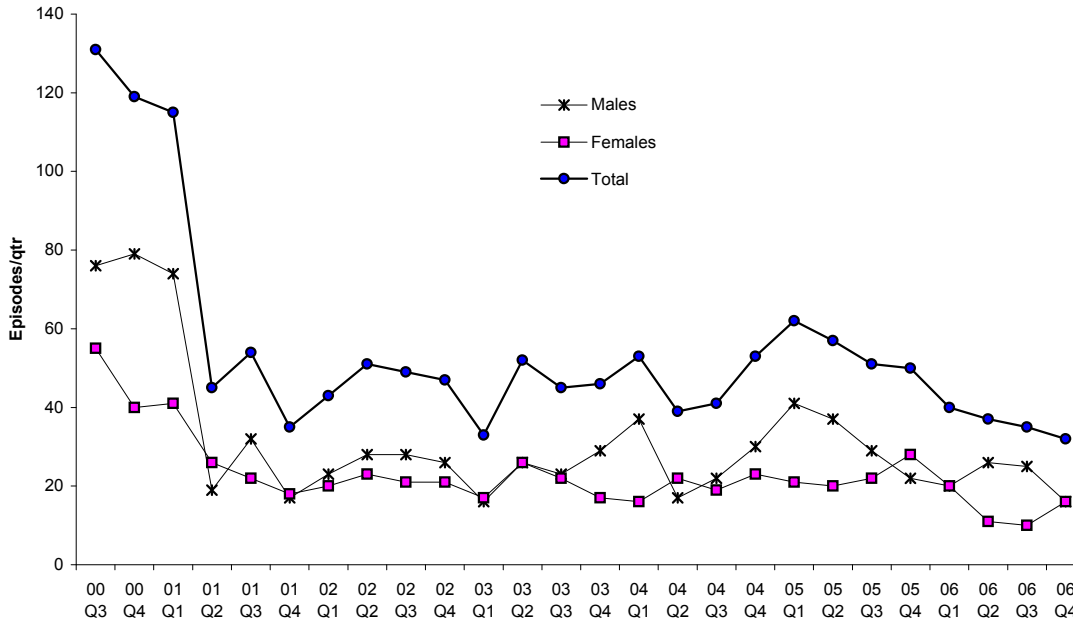
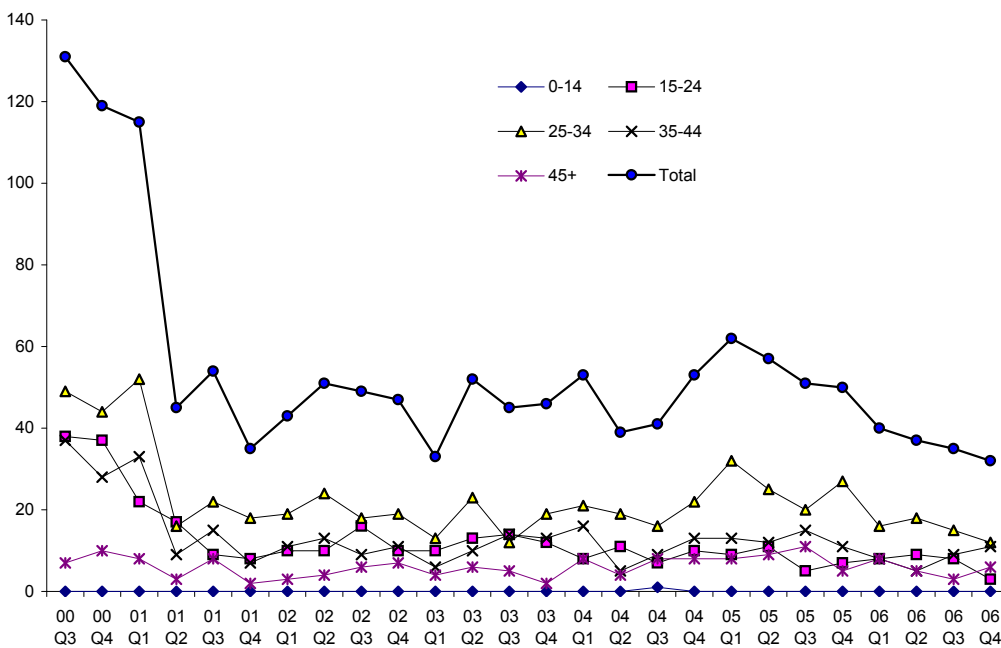
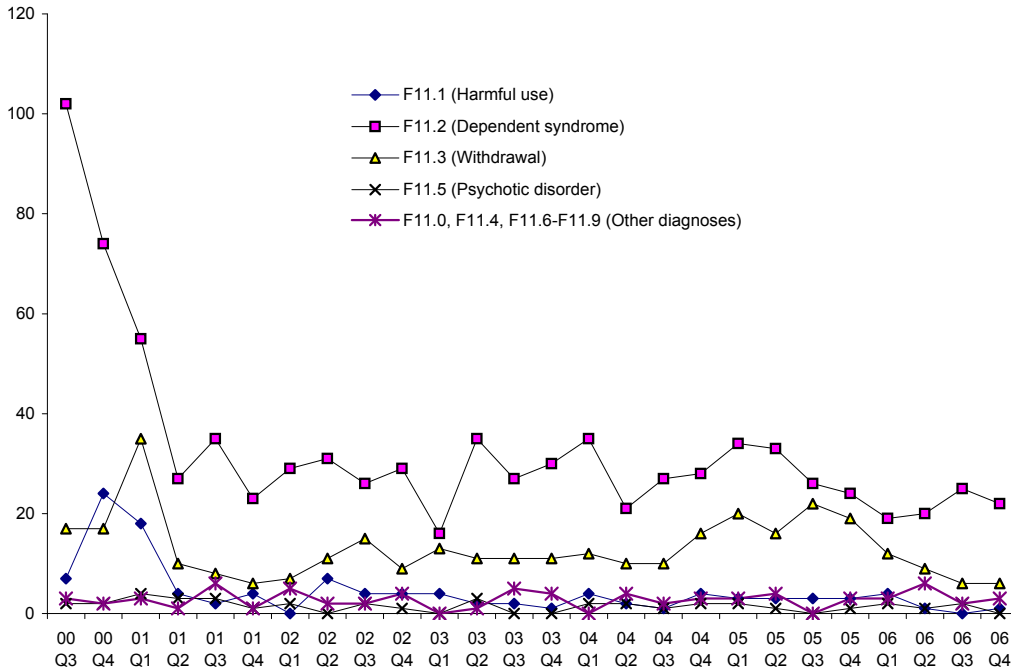


Figure A-2
Quarterly opioid related inpatient treatment episodes by age group
September quarter 2000 - December 2006



Data Tables & Figures: Opioid Related Mental Disorders

Figure A-3
Quarterly opioid related inpatient treatment episodes by sub diagnostic group
September quarter 2000 - December 2006



Data Tables & Figures: Opioid Related Mental Disorders

Table A-2

Quarterly opioid related psychiatric inpatient treatment episodes by sub diagnostic group, September quarter 2000 - December quarter 2006

	Harmful use (F11.1)	Dependent syndrome (F11.2)	Withdrawal (F11.3)	Psychotic disorder (F11.5)	Other diagnoses (F11.0, F11.4, F11.6-F11.9)	Total
2000						
Qtr 3	7	102	17	2	3	131
Qtr 4	24	74	17	2	2	119
Total	31	176	34	4	5	250
2001						
Qtr 1	18	55	35	4	3	115
Qtr 2	4	27	10	3	1	45
Qtr 3	2	35	8	3	6	54
Qtr 4	4	23	6	1	1	35
Total	28	140	59	11	11	249
2002						
Qtr 1	-	29	7	2	5	43
Qtr 2	7	31	11	-	2	51
Qtr 3	4	26	15	2	2	49
Qtr 4	4	29	9	1	4	47
Total	15	115	42	5	13	190
2003						
Qtr 1	4	16	13	-	-	33
Qtr 2	2	35	11	3	1	52
Qtr 3	2	27	11	-	5	45
Qtr 4	1	30	11	-	4	46
Total	9	108	46	3	10	176
2004						
Qtr 1	4	35	12	2	-	53
Qtr 2	2	21	10	2	4	39
Qtr 3	1	27	10	1	2	41
Qtr 4	4	28	16	2	3	53
Total	11	111	48	7	9	186
2005						
Qtr 1	3	34	20	2	3	62
Qtr 2	3	33	16	1	4	57
Qtr 3	3	26	22	-	-	51
Qtr 4	3	24	19	1	3	50
Total	12	117	77	4	10	220
2006						
Qtr 1	4	19	12	2	3	40
Qtr 2	1	20	9	1	6	37
Qtr 3	0	25	6	2	2	35
Qtr 4	1	22	6	-	3	32
Total	6	86	33	5	14	144

Source: Mental Health Information System, Department of Health.

Data Tables & Figures: Opioid Related Mental Disorders

Table A-3
Quarterly opioid related inpatient treatment episodes by age group, September quarter 2000 - December 2006: males

	<15	15-24	25-34	35-44	45+	Total
2000						
Qtr 3	-	16	33	21	6	76
Qtr 4	-	24	28	21	6	79
Total	-	40	61	42	12	155
2001						
Qtr 1	-	13	31	24	6	74
Qtr 2	-	6	8	4	1	19
Qtr 3	-	6	17	5	4	32
Qtr 4	-	1	9	6	1	17
Total	-	26	65	39	12	142
2002						
Qtr 1	-	5	10	6	2	23
Qtr 2	-	3	15	7	3	28
Qtr 3	-	5	13	6	4	28
Qtr 4	-	3	12	5	6	26
Total	-	16	50	24	15	105
2003						
Qtr 1	-	5	7	3	1	16
Qtr 2	-	4	10	7	5	26
Qtr 3	-	7	6	6	4	23
Qtr 4	-	7	13	8	1	29
Total	-	23	36	24	11	94
2004						
Qtr 1	-	3	17	13	4	37
Qtr 2	-	3	9	3	2	17
Qtr 3	1	3	7	6	5	22
Qtr 4	-	4	11	11	4	30
Total	1	13	44	33	15	106
2005						
Qtr 1	-	5	22	9	5	41
Qtr 2	-	4	17	10	6	37
Qtr 3	-	1	14	7	7	29
Qtr 4	-	3	10	6	3	22
Total	-	13	63	32	21	129
2006						
Qtr 1	-	3	7	2	8	20
Qtr 2	-	6	12	5	3	26
Qtr 3	-	5	12	6	2	25
Qtr 4	-	2	6	5	3	16
Total	-	16	37	18	16	87

Source: Mental Health Information System, Department of Health.

Table A-4
Quarterly opioid related inpatient treatment episodes by age group, September quarter 2000 - December 2006: females

	<15	15-24	25-34	35-44	45+	Total
2000						
Qtr 3	-	22	16	16	1	55
Qtr 4	-	13	16	7	4	40
Total	-	35	32	23	5	95
2001						
Qtr 1	-	9	21	9	2	41
Qtr 2	-	11	8	5	2	26
Qtr 3	-	3	5	10	4	22
Qtr 4	-	7	9	1	1	19
Total	-	30	43	25	9	107
2002						
Qtr 1	-	5	9	5	1	20
Qtr 2	-	7	9	6	1	23
Qtr 3	-	11	5	3	2	21
Qtr 4	-	7	7	6	1	21
Total	-	30	30	20	5	85
2003						
Qtr 1	-	5	6	3	3	17
Qtr 2	-	9	13	3	1	26
Qtr 3	-	7	6	8	1	22
Qtr 4	-	5	6	5	1	17
Total	-	26	31	19	6	82
2004						
Qtr 1	-	5	4	3	4	16
Qtr 2	-	8	10	2	2	22
Qtr 3	-	4	9	3	3	19
Qtr 4	-	6	11	2	4	23
Total	-	23	34	10	13	80
2005						
Qtr 1	-	4	10	4	3	21
Qtr 2	-	7	8	2	3	20
Qtr 3	-	4	6	8	4	22
Qtr 4	-	4	17	5	2	28
Total	-	19	41	19	12	91
2006						
Qtr 1	-	5	9	6	-	20
Qtr 2	-	3	6	-	2	11
Qtr 3	-	3	3	3	1	10
Qtr 4	-	1	6	6	3	16
Total	-	12	24	15	6	57

Source: Mental Health Information System, Department of Health.

Data Tables & Figures: Opioid Related Mental Disorders

Table A-5
Quarterly opioid related inpatient treatment episodes by age group, September quarter 2000
- December 2006: persons

	<15	15-24	25-34	35-44	45+	Total
2000						
Qtr 3	-	38	49	37	7	131
Qtr 4	-	37	44	28	10	119
Total	-	75	93	65	17	250
2001						
Qtr 1	-	22	52	33	8	115
Qtr 2	-	17	16	9	3	45
Qtr 3	-	9	22	15	8	54
Qtr 4	-	8	18	7	2	35
Total	-	56	108	64	21	249
2002						
Qtr 1	-	10	19	11	3	43
Qtr 2	-	10	24	13	4	51
Qtr 3	-	16	18	9	6	49
Qtr 4	-	10	19	11	7	47
Total	-	46	80	44	20	190
2003						
Qtr 1	-	10	13	6	4	33
Qtr 2	-	13	23	10	6	52
Qtr 3	-	14	12	14	5	45
Qtr 4	-	12	19	13	2	46
Total	-	49	67	43	17	176
2004						
Qtr 1	-	8	21	16	8	53
Qtr 2	-	11	19	5	4	39
Qtr 3	1	7	16	9	8	41
Qtr 4	-	10	22	13	8	53
Total	1	36	78	43	28	186
2005						
Qtr 1	-	9	32	13	8	62
Qtr 2	-	11	25	12	9	57
Qtr 3	-	5	20	15	11	51
Qtr 4	-	7	27	11	5	50
Total	-	32	104	51	33	220
2006						
Qtr 1	-	8	16	8	8	40
Qtr 2	-	9	18	5	5	37
Qtr 3	-	8	15	9	3	35
Qtr 4	-	3	12	11	6	32
Total	-	28	61	33	22	144

Source: Mental Health Information System, Department of Health.

Data Tables & Figures: Cannabis Related Mental Disorders

Figure A-4
Quarterly cannabis related inpatient treatment episodes by sex
September quarter 2000 - December 2006

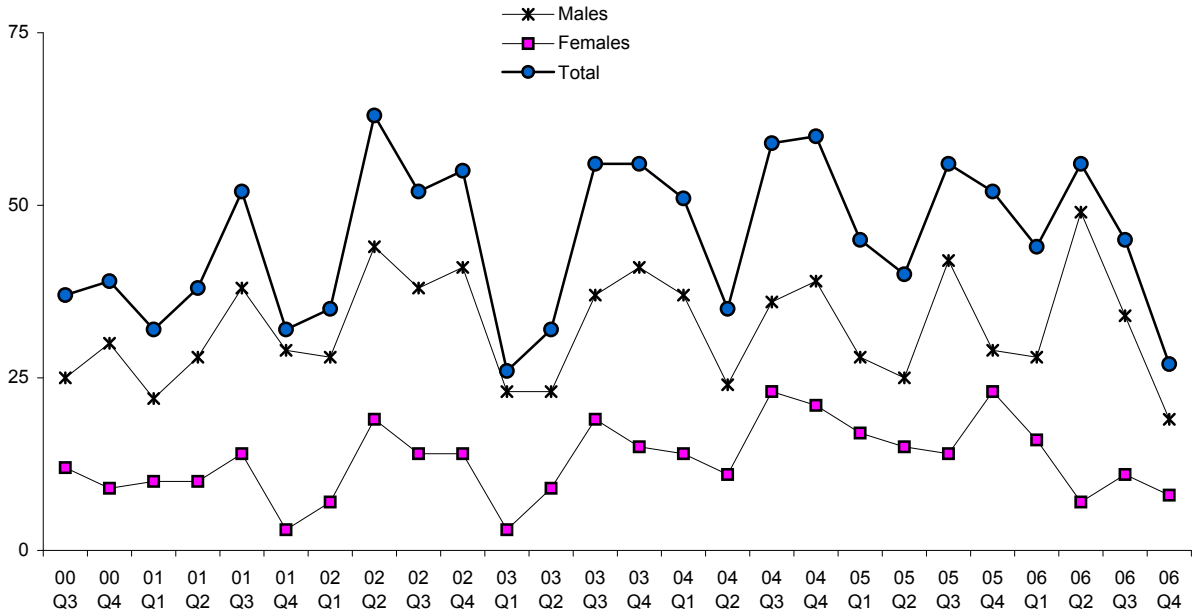
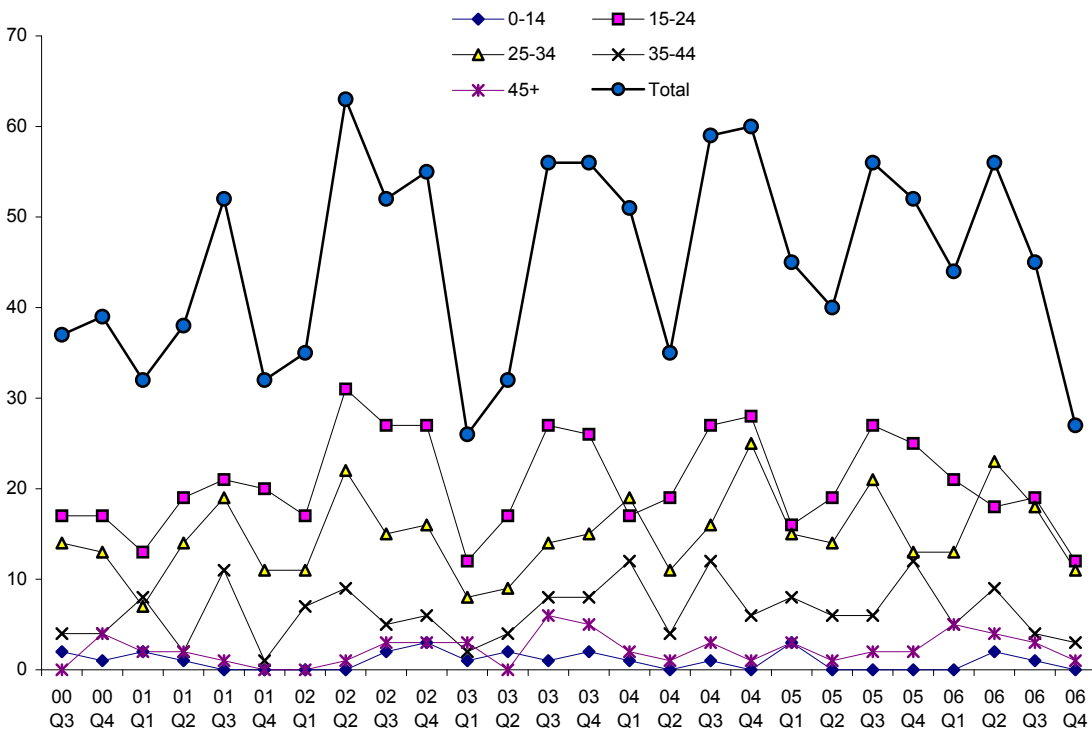
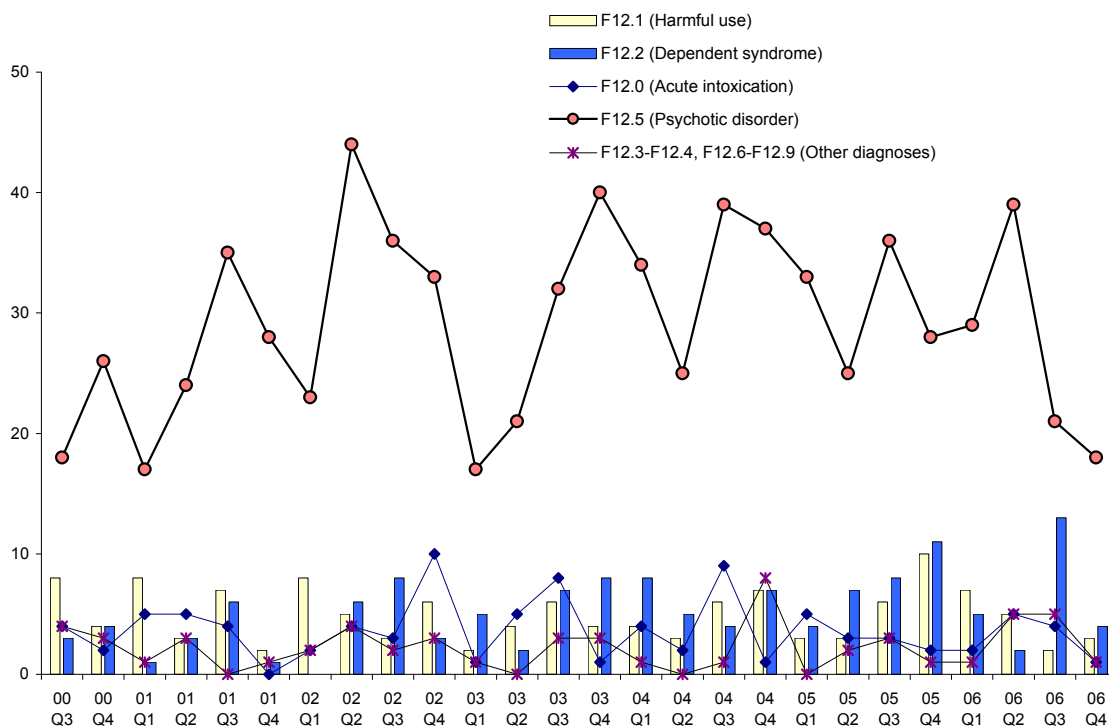


Figure A-5
Quarterly cannabis related inpatient treatment episodes by age group
September quarter 2000 - December 2006



Data Tables & Figures: Cannabis Related Mental Disorders

Figure A-6
Quarterly cannabis related inpatient treatment episodes by sub diagnostic group
September quarter 2000 - December 2006



Data Tables & Figures: Cannabis Related Mental Disorders

Table A-6

Quarterly cannabis related psychiatric inpatient treatment episodes by sub diagnostic group, September quarter 2000 - December quarter 2006

	Acute intoxication (F12.0)	Harmful use (F12.1)	Dependent syndrome (F12.2)	Psychotic disorder (F12.5)	Other diagnoses (F12.3-F12.4, F12.6-F12.9)	Total
2000						
Qtr 3	4	8	3	18	4	37
Qtr 4	2	4	4	26	6	42
Total	6	12	7	44	10	79
2001						
Qtr 1	5	8	1	17	2	33
Qtr 2	5	3	3	24	4	39
Qtr 3	4	7	6	35	2	54
Qtr 4	-	2	1	28	1	32
Total	14	20	11	104	9	158
2002						
Qtr 1	2	8	-	23	3	36
Qtr 2	4	5	6	44	4	63
Qtr 3	3	3	8	36	6	56
Qtr 4	10	6	3	33	4	56
Total	19	22	17	136	17	211
2003						
Qtr 1	1	2	5	17	2	27
Qtr 2	5	4	2	21	1	33
Qtr 3	8	6	7	32	3	56
Qtr 4	1	4	8	40	5	58
Total	15	16	22	110	11	174
2004						
Qtr 1	4	4	8	34	1	51
Qtr 2	2	3	5	25	1	36
Qtr 3	9	6	4	39	1	59
Qtr 4	1	7	7	37	8	60
Total	16	20	24	135	11	206
2005						
Qtr 1	5	3	4	33	2	47
Qtr 2	3	3	7	25	2	40
Qtr 3	3	6	8	36	3	56
Qtr 4	2	10	11	28	2	53
Total	13	22	30	122	9	196
2006						
Qtr 1	2	7	5	29	1	44
Qtr 2	5	5	2	39	5	56
Qtr 3	4	2	13	21	5	45
Qtr 4	1	3	4	18	1	29
Total	12	17	24	107	12	174

Source: Mental Health Information System, Department of Health.

Data Tables & Figures: Cannabis Related Mental Disorders

Table A-7
Quarterly cannabis related inpatient treatment episodes by age group, September quarter 2000 - December 2006: males

	<15	15-24	25-34	35-44	45+	Total
2000						
Qtr 3	-	16	6	3	-	25
Qtr 4	1	11	10	4	4	30
Total	1	27	16	7	4	55
2001						
Qtr 1	-	11	3	6	2	22
Qtr 2	1	14	11	1	1	28
Qtr 3	-	16	16	6	-	38
Qtr 4	-	17	11	1	-	29
Total	1	58	41	14	3	117
2002						
Qtr 1	-	14	10	4	-	28
Qtr 2	-	22	13	8	1	44
Qtr 3	2	19	12	3	2	38
Qtr 4	2	23	11	4	1	41
Total	4	78	46	19	4	151
2003						
Qtr 1	1	10	8	2	2	23
Qtr 2	-	13	8	2	-	23
Qtr 3	1	16	11	5	4	37
Qtr 4	1	20	12	3	5	41
Total	3	59	39	12	11	124
2004						
Qtr 1	-	11	14	10	2	37
Qtr 2	-	11	9	3	1	24
Qtr 3	1	17	8	7	3	36
Qtr 4	-	19	15	4	1	39
Total	1	58	46	24	7	136
2005						
Qtr 1	1	14	8	3	2	28
Qtr 2	-	11	9	5	-	25
Qtr 3	-	18	17	5	2	42
Qtr 4	-	15	8	5	1	29
Total	1	58	43	18	5	124
2006						
Qtr 1	-	15	10	2	1	28
Qtr 2	1	16	20	9	3	49
Qtr 3	-	16	13	3	2	34
Qtr 4	-	7	9	3	-	19
Total	1	54	52	17	6	130

Source: Mental Health Information System, Department of Health.

Table A-8
Quarterly cannabis related inpatient treatment episodes by age group, September quarter 2000 - December 2006: females

	<15	15-24	25-34	35-44	45+	Total
2000						
Qtr 3	2	1	8	1	-	12
Qtr 4	-	6	3	-	-	9
Total	2	7	11	1	-	21
2001						
Qtr 1	2	2	4	2	-	10
Qtr 2	-	5	3	1	1	10
Qtr 3	-	5	3	5	1	14
Qtr 4	-	3	-	-	-	3
Total	2	15	10	8	2	37
2002						
Qtr 1	-	3	1	3	-	7
Qtr 2	-	9	9	1	-	19
Qtr 3	-	8	3	2	1	14
Qtr 4	1	4	5	2	2	14
Total	1	24	18	8	3	54
2003						
Qtr 1	-	2	-	-	1	3
Qtr 2	2	4	1	2	-	9
Qtr 3	-	11	3	3	2	19
Qtr 4	1	6	3	5	-	15
Total	3	23	7	10	3	46
2004						
Qtr 1	1	6	5	2	-	14
Qtr 2	-	8	2	1	-	11
Qtr 3	-	10	8	5	-	23
Qtr 4	-	9	10	2	-	21
Total	1	33	25	10	-	69
2005						
Qtr 1	2	2	7	5	1	17
Qtr 2	-	8	5	1	1	15
Qtr 3	-	9	4	1	-	14
Qtr 4	-	10	5	7	1	23
Total	2	29	21	14	3	69
2006						
Qtr 1	-	6	3	3	4	16
Qtr 2	1	2	3	-	1	7
Qtr 3	1	3	5	1	1	11
Qtr 4	-	5	2	-	1	8
Total	2	16	13	4	7	42

Source: Mental Health Information System, Department of Health.

Data Tables & Figures: Cannabis Related Mental Disorders

Table A-9
Quarterly cannabis related inpatient treatment
episodes by age group, September quarter
2000 - December 2006: persons

	<15	15-24	25-34	35-44	45+	Total
2000						
Qtr 3	2	17	14	4	-	37
Qtr 4	1	17	13	4	4	39
Total	3	34	27	8	4	76
2001						
Qtr 1	2	13	7	8	2	32
Qtr 2	1	19	14	2	2	38
Qtr 3	-	21	19	11	1	52
Qtr 4	-	20	11	1	-	32
Total	3	73	51	22	5	154
2002						
Qtr 1	-	17	11	7	-	35
Qtr 2	-	31	22	9	1	63
Qtr 3	2	27	15	5	3	52
Qtr 4	3	27	16	6	3	55
Total	5	102	64	27	7	205
2003						
Qtr 1	1	12	8	2	3	26
Qtr 2	2	17	9	4	-	32
Qtr 3	1	27	14	8	6	56
Qtr 4	2	26	15	8	5	56
Total	6	82	46	22	14	170
2004						
Qtr 1	1	17	19	12	2	51
Qtr 2	-	19	11	4	1	35
Qtr 3	1	27	16	12	3	59
Qtr 4	-	28	25	6	1	60
Total	2	91	71	34	7	205
2005						
Qtr 1	3	16	15	8	3	45
Qtr 2	-	19	14	6	1	40
Qtr 3	-	27	21	6	2	56
Qtr 4	-	25	13	12	2	52
Total	3	87	63	32	8	193
2006						
Qtr 1	-	21	13	5	5	44
Qtr 2	2	18	23	9	4	56
Qtr 3	1	19	18	4	3	45
Qtr 4	-	12	11	3	1	27
Total	3	70	65	21	13	172

Source: Mental Health Information System, Department of Health.

Data Tables & Figures: Stimulant Related Mental Disorders

Figure A-7
Quarterly stimulant related inpatient treatment episodes by sex
September quarter 2000 - December 2006

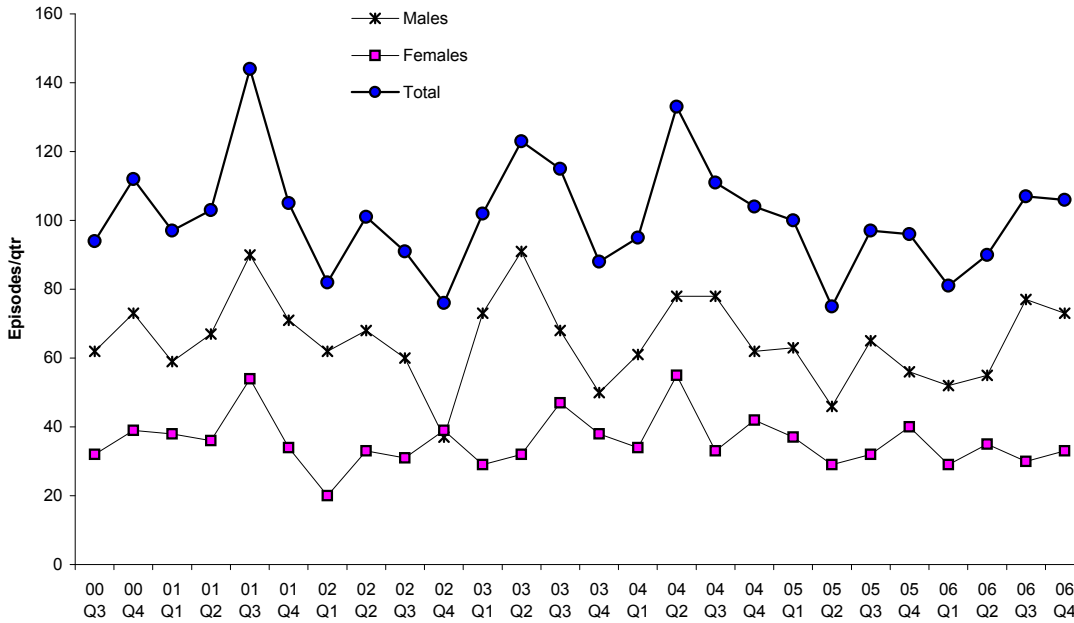
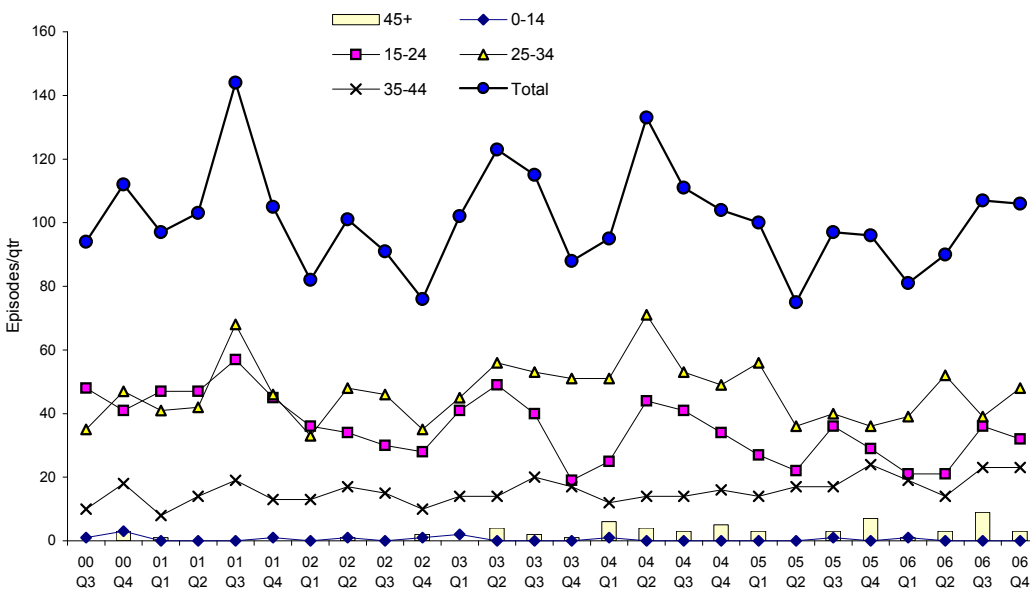
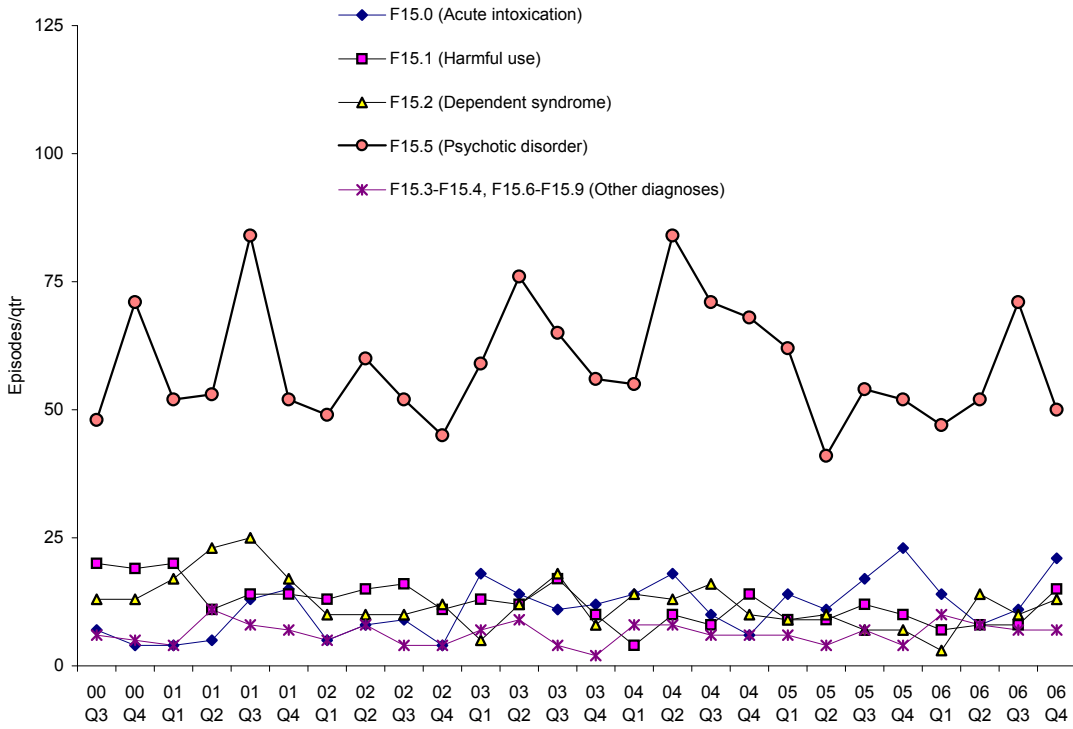


Figure A-8
Quarterly stimulant related inpatient treatment episodes by age group
September quarter 2000 - December 2006



Data Tables & Figures: Stimulant Related Mental Disorders

Figure A-9
Quarterly stimulant related inpatient treatment episodes by sub diagnostic group
September quarter 2000 - December 2006



Data Tables & Figures: Stimulant Related Mental Disorders

Table A-10

Quarterly stimulant related psychiatric inpatient treatment episodes by diagnostic group, September quarter 2000 - December quarter 2006

	Acute intoxication (F15.0)	Harmful use (F15.1)	Dependent syndrome (F15.2)	Psychotic disorder (F15.5)	Other diagnoses (F15.3-F15.4, F15.6-F15.9)	Total
2000						
Qtr 3	7	20	13	48	6	94
Qtr 4	4	19	13	71	5	112
Total	11	39	26	119	11	206
2001						
Qtr 1	4	20	17	52	4	97
Qtr 2	5	11	23	53	11	103
Qtr 3	13	14	25	84	8	144
Qtr 4	15	14	17	52	7	105
Total	37	59	82	241	30	449
2002						
Qtr 1	5	13	10	49	5	82
Qtr 2	8	15	10	60	8	101
Qtr 3	9	16	10	52	4	91
Qtr 4	4	11	12	45	4	76
Total	26	55	42	206	21	350
2003						
Qtr 1	18	13	5	59	7	102
Qtr 2	14	12	12	76	9	123
Qtr 3	11	17	18	65	4	115
Qtr 4	12	10	8	56	2	88
Total	55	52	43	256	22	428
2004						
Qtr 1	14	4	14	55	8	95
Qtr 2	18	10	13	84	8	133
Qtr 3	10	8	16	71	6	111
Qtr 4	6	14	10	68	6	104
Total	48	36	53	278	28	443
2005						
Qtr 1	14	9	9	62	6	100
Qtr 2	11	9	10	41	4	75
Qtr 3	17	12	7	54	7	97
Qtr 4	23	10	7	52	4	96
Total	65	40	33	209	21	368
2006						
Qtr 1	14	7	3	47	10	81
Qtr 2	8	8	14	52	8	90
Qtr 3	11	8	10	71	7	107
Qtr 4	21	15	13	50	7	106
Total	54	38	40	220	32	384

Source: Mental Health Information System, Department of Health.

Data Tables & Figures: Stimulant Related Mental Disorders

Table A-11
Quarterly stimulant related inpatient treatment episodes by age group, September quarter 2000 - December 2006: males

	<15	15-24	25-34	35-44	45+	Total
2000						
Qtr 3	1	30	22	9	-	62
Qtr 4	2	26	30	12	3	73
Total	3	56	52	21	3	135
2001						
Qtr 1	-	29	23	6	1	59
Qtr 2	-	28	30	9	-	67
Qtr 3	-	42	40	8	-	90
Qtr 4	1	31	31	8	-	71
Total	1	130	124	31	1	287
2002						
Qtr 1	-	28	25	9	-	62
Qtr 2	-	22	32	13	1	68
Qtr 3	-	15	31	14	-	60
Qtr 4	1	13	19	2	2	37
Total	1	78	107	38	3	227
2003						
Qtr 1	2	26	34	11	-	73
Qtr 2	-	36	42	11	2	91
Qtr 3	-	21	34	11	2	68
Qtr 4	-	11	33	5	1	50
Total	2	94	143	38	5	282
2004						
Qtr 1	-	16	35	7	3	61
Qtr 2	-	26	43	8	1	78
Qtr 3	-	33	35	10	-	78
Qtr 4	-	22	31	7	2	62
Total	-	97	144	32	6	279
2005						
Qtr 1	-	21	32	9	1	63
Qtr 2	-	13	21	12	-	46
Qtr 3	-	24	24	15	2	65
Qtr 4	-	15	22	16	3	56
Total	-	73	99	52	6	230
2006						
Qtr 1	-	14	26	12	-	52
Qtr 2	-	14	29	11	1	55
Qtr 3	-	25	27	17	8	77
Qtr 4	-	24	31	17	1	73
Total	-	77	113	57	10	257

Source: Mental Health Information System, Department of Health.

Table A-12
Quarterly stimulant related inpatient treatment episodes by age group, September quarter 2000 - December 2006: females

	<15	15-24	25-34	35-44	45+	Total
2000						
Qtr 3	-	18	13	1	-	32
Qtr 4	1	15	17	6	-	39
Total	1	33	30	7	-	71
2001						
Qtr 1	-	18	18	2	-	38
Qtr 2	-	19	12	5	-	36
Qtr 3	-	15	28	11	-	54
Qtr 4	-	14	15	5	-	34
Total	-	66	73	23	-	162
2002						
Qtr 1	-	8	8	4	-	20
Qtr 2	1	12	16	4	-	33
Qtr 3	-	15	15	1	-	31
Qtr 4	-	15	16	8	-	39
Total	1	50	55	17	-	123
2003						
Qtr 1	-	15	11	3	-	29
Qtr 2	-	13	14	3	2	32
Qtr 3	-	19	19	9	-	47
Qtr 4	-	8	18	12	-	38
Total	-	55	62	27	2	146
2004						
Qtr 1	1	9	16	5	3	34
Qtr 2	-	18	28	6	3	55
Qtr 3	-	8	18	4	3	33
Qtr 4	-	12	18	9	3	42
Total	1	47	80	24	12	164
2005						
Qtr 1	-	6	24	5	2	37
Qtr 2	-	9	15	5	-	29
Qtr 3	1	12	16	2	1	32
Qtr 4	-	14	14	8	4	40
Total	1	41	69	20	7	138
2006						
Qtr 1	1	7	13	7	1	29
Qtr 2	-	7	23	3	2	35
Qtr 3	-	11	12	6	1	30
Qtr 4	-	8	17	6	2	33
Total	1	33	65	22	6	127

Source: Mental Health Information System, Department of Health.

Data Tables & Figures: Stimulant Related Mental Disorders

Table A-13
Quarterly stimulant related inpatient treatment
episodes by age group, September quarter
2000 - December 2006: persons

	<15	15-24	25-34	35-44	45+	Total
2000						
Qtr 3	1	48	35	10	-	94
Qtr 4	3	41	47	18	3	112
Total	4	89	82	28	3	206
2001						
Qtr 1	-	47	41	8	1	97
Qtr 2	-	47	42	14	-	103
Qtr 3	-	57	68	19	-	144
Qtr 4	1	45	46	13	-	105
Total	1	196	197	54	1	449
2002						
Qtr 1	-	36	33	13	-	82
Qtr 2	1	34	48	17	1	101
Qtr 3	-	30	46	15	-	91
Qtr 4	1	28	35	10	2	76
Total	2	128	162	55	3	350
2003						
Qtr 1	2	41	45	14	-	102
Qtr 2	-	49	56	14	4	123
Qtr 3	-	40	53	20	2	115
Qtr 4	-	19	51	17	1	88
Total	2	149	205	65	7	428
2004						
Qtr 1	1	25	51	12	6	95
Qtr 2	-	44	71	14	4	133
Qtr 3	-	41	53	14	3	111
Qtr 4	-	34	49	16	5	104
Total	1	144	224	56	18	443
2005						
Qtr 1	-	27	56	14	3	100
Qtr 2	-	22	36	17	-	75
Qtr 3	1	36	40	17	3	97
Qtr 4	-	29	36	24	7	96
Total	1	114	168	72	13	368
2006						
Qtr 1	1	21	39	19	1	81
Qtr 2	-	21	52	14	3	90
Qtr 3	-	36	39	23	9	107
Qtr 4	-	32	48	23	3	106
Total	1	110	178	79	16	384

Source: Mental Health Information System, Department of Health.

Data Tables & Figures: Multiple Drug Related Mental Disorders

Figure A-10
Quarterly multiple drug related inpatient treatment episodes by sex
September quarter 2000 - December 2006

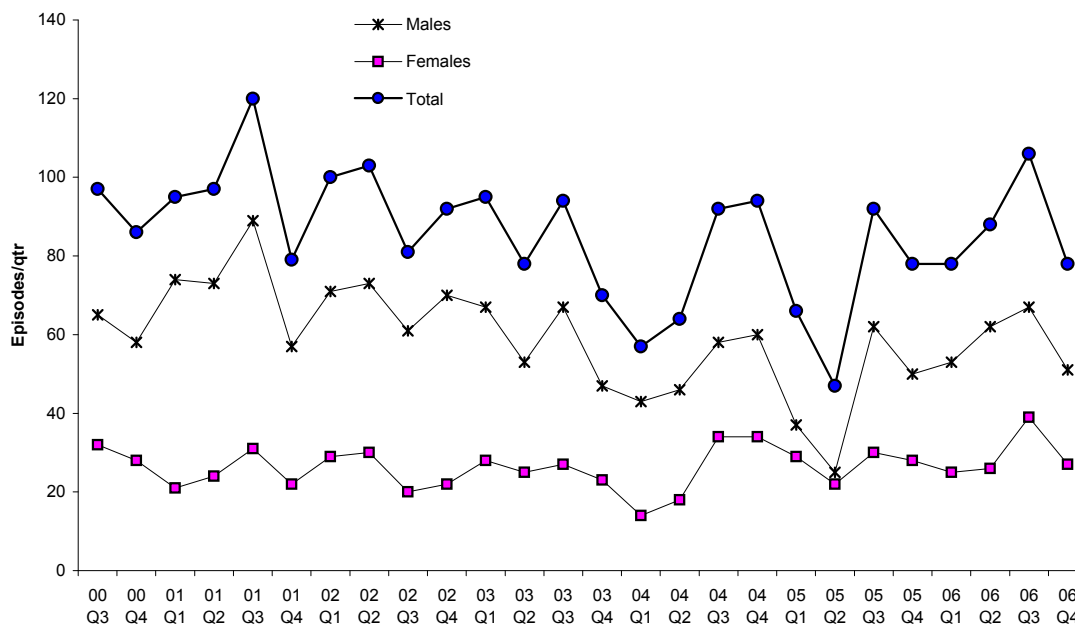
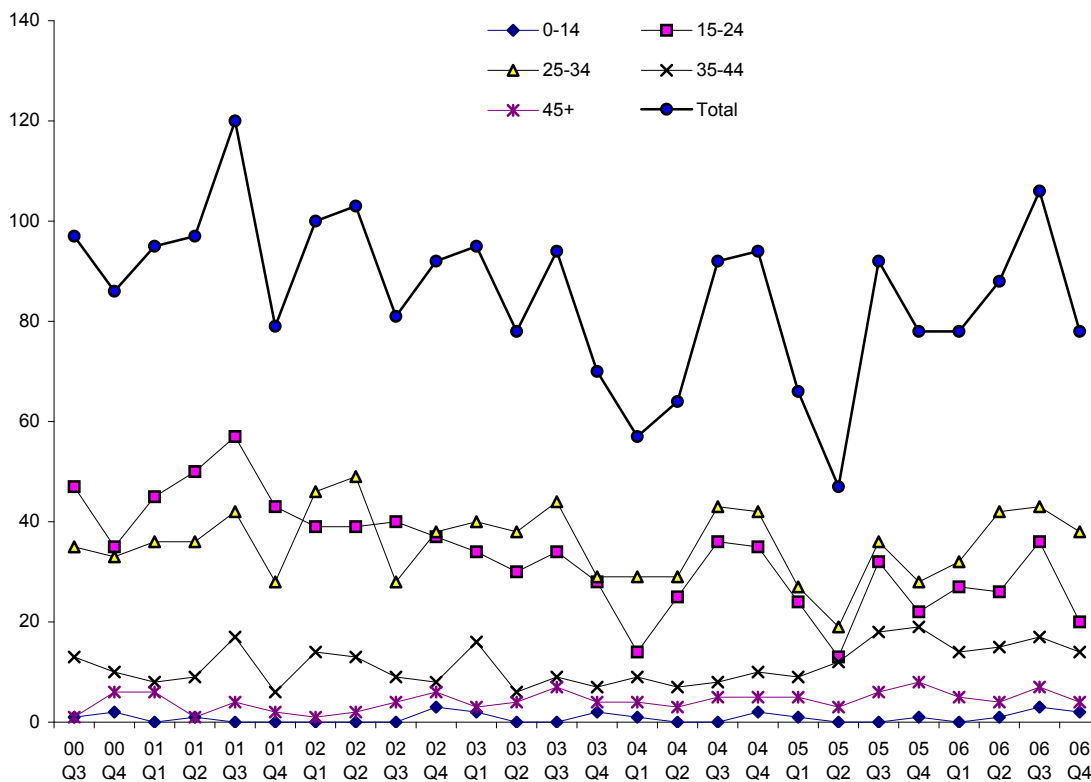
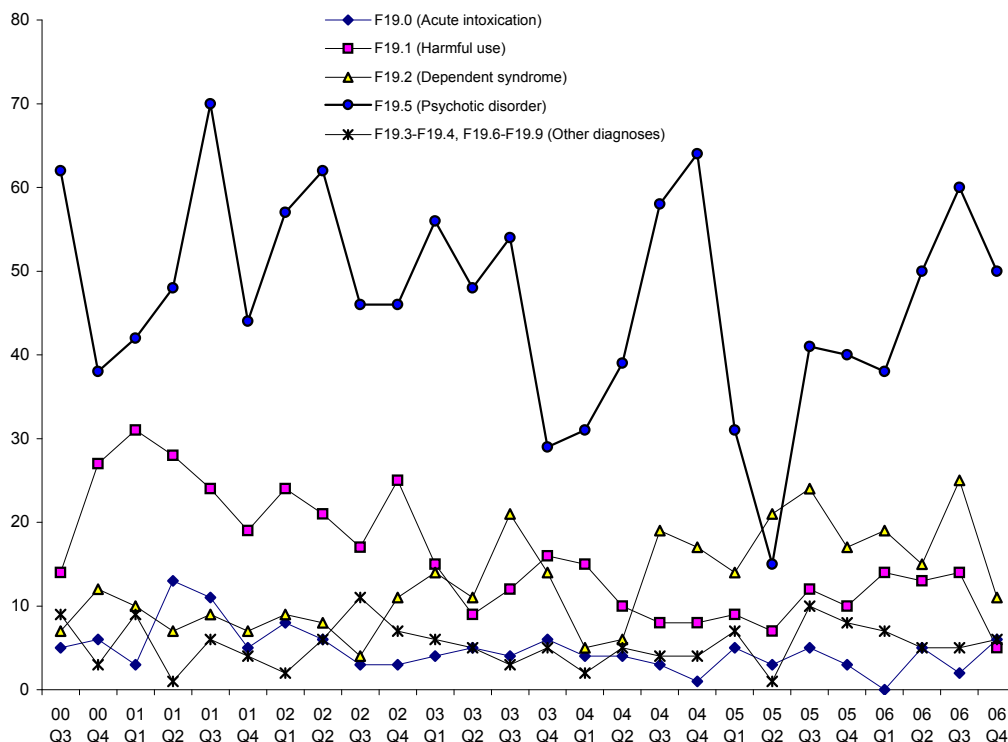


Figure A-11
Quarterly multiple drug related inpatient treatment episodes by age group
September quarter 2000 - December 2006



Data Tables & Figures: Multiple Drug Related Mental Disorders

Figure A-12
Quarterly multiple drug related inpatient treatment episodes by sub diagnostic group
September quarter 2000 - December 2006



Data Tables & Figures: Multiple Drug Related Mental Disorders

Table A-14

Quarterly multiple drug related psychiatric inpatient treatment episodes by diagnostic group, September quarter 2000 - December quarter 2006

	Acute intoxication (F19.0)	Harmful use (F19.1)	Dependent syndrome (F19.2)	Psychotic disorder (F19.5)	Other diagnoses (F19.3-F19.4, F19.6-F19.9)	Total
2000						
Qtr 3	5	14	7	62	9	97
Qtr 4	6	27	12	38	3	86
Total	11	41	19	100	12	183
2001						
Qtr 1	3	31	10	42	9	95
Qtr 2	13	28	7	48	1	97
Qtr 3	11	24	9	70	6	120
Qtr 4	5	19	7	44	4	79
Total	32	102	33	204	20	391
2002						
Qtr 1	8	24	9	57	2	100
Qtr 2	6	21	8	62	6	103
Qtr 3	3	17	4	46	11	81
Qtr 4	3	25	11	46	7	92
Total	20	87	32	211	26	376
2003						
Qtr 1	4	15	14	56	6	95
Qtr 2	5	9	11	48	5	78
Qtr 3	4	12	21	54	3	94
Qtr 4	6	16	14	29	5	70
Total	19	52	60	187	19	337
2004						
Qtr 1	4	15	5	31	2	57
Qtr 2	4	10	6	39	5	64
Qtr 3	3	8	19	58	4	92
Qtr 4	1	8	17	64	4	94
Total	12	41	47	192	15	307
2005						
Qtr 1	5	9	14	31	7	66
Qtr 2	3	7	21	15	1	47
Qtr 3	5	12	24	41	10	92
Qtr 4	3	10	17	40	8	78
Total	16	38	76	127	26	283
2006						
Qtr 1	-	14	19	38	7	78
Qtr 2	5	13	15	50	5	88
Qtr 3	2	14	25	60	5	106
Qtr 4	6	5	11	50	6	78
Total	13	46	70	198	23	350

Source: Mental Health Information System, Department of Health.

Data Tables & Figures: Multiple Drug Related Mental Disorders

Table A-15
Quarterly multiple drug related inpatient treatment episodes by age group, September quarter 2000 - December 2006: males

	<15	15-24	25-34	35-44	45+	Total
2000						
Qtr 3	1	29	24	10	1	65
Qtr 4	1	22	25	7	3	58
Total	2	51	49	17	4	123
2001						
Qtr 1	-	34	29	8	3	74
Qtr 2	1	37	30	5	-	73
Qtr 3	-	46	26	14	3	89
Qtr 4	-	33	20	3	1	57
Total	1	150	105	30	7	293
2002						
Qtr 1	-	29	31	10	1	71
Qtr 2	-	28	34	9	2	73
Qtr 3	-	30	21	7	3	61
Qtr 4	1	31	28	7	3	70
Total	1	118	114	33	9	275
2003						
Qtr 1	-	27	29	10	1	67
Qtr 2	-	19	25	5	4	53
Qtr 3	-	21	34	7	5	67
Qtr 4	1	17	20	6	3	47
Total	1	84	108	28	13	234
2004						
Qtr 1	1	8	25	6	3	43
Qtr 2	-	19	19	5	3	46
Qtr 3	-	21	30	4	3	58
Qtr 4	-	21	30	5	4	60
Total	1	69	104	20	13	207
2005						
Qtr 1	1	15	14	3	4	37
Qtr 2	-	8	9	5	3	25
Qtr 3	-	21	25	11	5	62
Qtr 4	-	17	13	15	5	50
Total	1	61	61	34	17	174
2006						
Qtr 1	-	22	20	9	2	53
Qtr 2	1	18	31	10	2	62
Qtr 3	3	23	28	10	3	67
Qtr 4	1	14	26	7	3	51
Total	5	77	105	36	10	233

Source: Mental Health Information System, Department of Health.

Table A-16
Quarterly multiple drug related inpatient treatment episodes by age group, September quarter 2000 - December 2006: females

	<15	15-24	25-34	35-44	45+	Total
2000						
Qtr 3	-	18	11	3	-	32
Qtr 4	1	13	8	3	3	28
Total	1	31	19	6	3	60
2001						
Qtr 1	-	11	7	-	3	21
Qtr 2	-	13	6	4	1	24
Qtr 3	-	11	16	3	1	31
Qtr 4	-	10	8	3	1	22
Total	-	45	37	10	6	98
2002						
Qtr 1	-	10	15	4	-	29
Qtr 2	-	11	15	4	-	30
Qtr 3	-	10	7	2	1	20
Qtr 4	2	6	10	1	3	22
Total	2	37	47	11	4	101
2003						
Qtr 1	2	7	11	6	2	28
Qtr 2	-	11	13	1	-	25
Qtr 3	-	13	10	2	2	27
Qtr 4	1	11	9	1	1	23
Total	3	42	43	10	5	103
2004						
Qtr 1	-	6	4	3	1	14
Qtr 2	-	6	10	2	-	18
Qtr 3	-	15	13	4	2	34
Qtr 4	2	14	12	5	1	34
Total	2	41	39	14	4	100
2005						
Qtr 1	-	9	13	6	1	29
Qtr 2	-	5	10	7	-	22
Qtr 3	-	11	11	7	1	30
Qtr 4	1	5	15	4	3	28
Total	1	30	49	24	5	109
2006						
Qtr 1	-	5	12	5	3	25
Qtr 2	-	8	11	5	2	26
Qtr 3	-	13	15	7	4	39
Qtr 4	1	6	12	7	1	27
Total	1	32	50	24	10	117

Source: Mental Health Information System, Department of Health.

Data Tables & Figures: Multiple Drug Related Mental Disorders

Table A-17
Quarterly multiple drug related inpatient treatment episodes by age group, September quarter 2000 - December 2006: persons

	<15	15-24	25-34	35-44	45+	Total
2000						
Qtr 3	1	47	35	13	1	97
Qtr 4	2	35	33	10	6	86
Total	3	82	68	23	7	183
2001						
Qtr 1	-	45	36	8	6	95
Qtr 2	1	50	36	9	1	97
Qtr 3	-	57	42	17	4	120
Qtr 4	-	43	28	6	2	79
Total	1	195	142	40	13	391
2002						
Qtr 1	-	39	46	14	1	100
Qtr 2	-	39	49	13	2	103
Qtr 3	-	40	28	9	4	81
Qtr 4	3	37	38	8	6	92
Total	3	155	161	44	13	376
2003						
Qtr 1	2	34	40	16	3	95
Qtr 2	-	30	38	6	4	78
Qtr 3	-	34	44	9	7	94
Qtr 4	2	28	29	7	4	70
Total	4	126	151	38	18	337
2004						
Qtr 1	1	14	29	9	4	57
Qtr 2	-	25	29	7	3	64
Qtr 3	-	36	43	8	5	92
Qtr 4	2	35	42	10	5	94
Total	3	110	143	34	17	307
2005						
Qtr 1	1	24	27	9	5	66
Qtr 2	-	13	19	12	3	47
Qtr 3	-	32	36	18	6	92
Qtr 4	1	22	28	19	8	78
Total	2	91	110	58	22	283
2006						
Qtr 1	-	27	32	14	5	78
Qtr 2	1	26	42	15	4	88
Qtr 3	3	36	43	17	7	106
Qtr 4	2	20	38	14	4	78
Total	6	109	155	60	20	350

Source: Mental Health Information System, Department of Health.

Methodology

Caution should be exercised in interpretation of trends in data reported in this publication because:

- single consultations and group therapy consultations have been added together or occasions of service;
- inpatients include any separations in WA acute hospitals; and
- if outpatient diagnosis is not known then last known diagnosis is provided from another mental health episode.

Occasions of service (OCS) are reported under the guidelines of the National Minimum Data Set (NMDS) for Community Mental Health, Department of Health. (*Community Mental Health Reference Manual & DOH Technical Bulletins for Mental Health & Non Admitted Care.*)

Inconsistent reporting of OCS by using old method mainly occurred due to problems in the Local Area Mental Health Information System (LAMHIS) data system. LAMHIS focused on health professional activity rather than clients, which does not meet the NMDS requirements. To overcome this problem a new reporting method was developed by Information Collection and Management in conjunction with Division of Mental Health.

Previous LAMHIS reports are not suitable to report OCS as they over report OCS by approximately 40%. The mental health online clinical information system (PSOLIS) records OCS to national standards and a reporting tool has been developed by Information Collection and Management in conjunction with Division of Mental Health.

Counting rules for an OCS in LAMHIS are as follows:

- one OCS will be reported by a clinician for a person if it is a continuous service;
- client related activities such as staff meetings, travel etc are not reported;
- if two or more health professionals are present at the same patient consultation it is counted as one; and
- continuous group sessions over one day are counted as one OCS when the patient is not present.

Counts of OCS in 2003/2004 and 2004/2005 may also be affected because of a number of other considerations.

Decreases in 2003/2004 and 2004/2005 were due to:

- Reduction in the over reporting of same day contacts in PSOLIS (now with a date and time stamp) when compared to LAMHIS (no time stamp).
- Introduction of a new computing system (PSOLIS) has meant a significant change in work practices which has caused a down turn in data collection standards in the short term.
- A number of day rehabilitation programs were without a computing system for several months due to the introduction of PSOLIS.
- Normal variation with changes especially in day programs numbers which have significant impacts on contact numbers.
- Seasonal affects, eg during Christmas.

Increases in 2003/2004 and 2004/2005 were due to:

- Improved compliance and quality assurance processes/reporting all contacts under new Commonwealth guidelines.
- Programs not reported in LAMHIS are now taken up in PSOLIS. There is now Statewide capture.
- Significant improvement in collection of OCS when patients are not present, eg OCS have risen significantly in this area.
- Seasonal affects, eg inpatient discharges and re-admissions during Christmas.

Source: Mental Health Information System, Department of Health, WA.

This publication is available online at
<http://www.dao.health.wa.gov.au>