



Drug Related Offences & Seizures, WA, 1998-2005

In WA over the eight year period 1998 to 2005 there were about 3,500 to 4,000 drug offences per quarter, of which about 85% involved possession (ie minor) offences. There were a number of notable trends in seizures in relation to cannabis, amphetamines, heroin and ecstasy. With respect to cannabis, the proportion of all annual drug seizures involving cannabis decreased from 84.1% in 1998 to 69.7% in 2005 and whereas there was a total of about 17,000 annual cannabis seizures from 1998 to 2001, after 2001 there were fewer annual cannabis seizures. With respect to amphetamines, seizures sharply increased up to the June quarter 2001, decreased to the December quarter 2002 and over the last three years steadily increased. With respect to heroin, seizures steadily declined from a peak in the June quarter 1998 to the December quarter 2002 and have since remained relatively constant up to the end of 2005. With respect to ecstasy, seizures increased up to the March quarter 2001, decreased to the June quarter 2002 and have since increased somewhat to the end of 2005.

Drug Offences

From the March quarter 1998 up to the present there were about 3,500 to 4,000 drug offences per quarter, of which about 85% were possession offences (ie possession/use of drugs and possession of implements), with the remaining 15% being trafficking offences (ie sell/supply, cultivation and manufacture).

Offences increased from the March quarter 1998 (3,047 offences) to the June quarter 2001 (4,145 offences), declined somewhat to the December quarter 2003 (2,808 offences) and have since increased, with a total of 4,022 offences in the December quarter 2005 (Figure 1).

The annual trends in drug offences in Table 1 (page 2) show that 'possession' offences increased from 1998 to 2001,

declined to 2004 and increased again in 2005, whereas 'trafficking' offences declined from 1998 to 2003 and then steadily increased in 2004 and 2005.

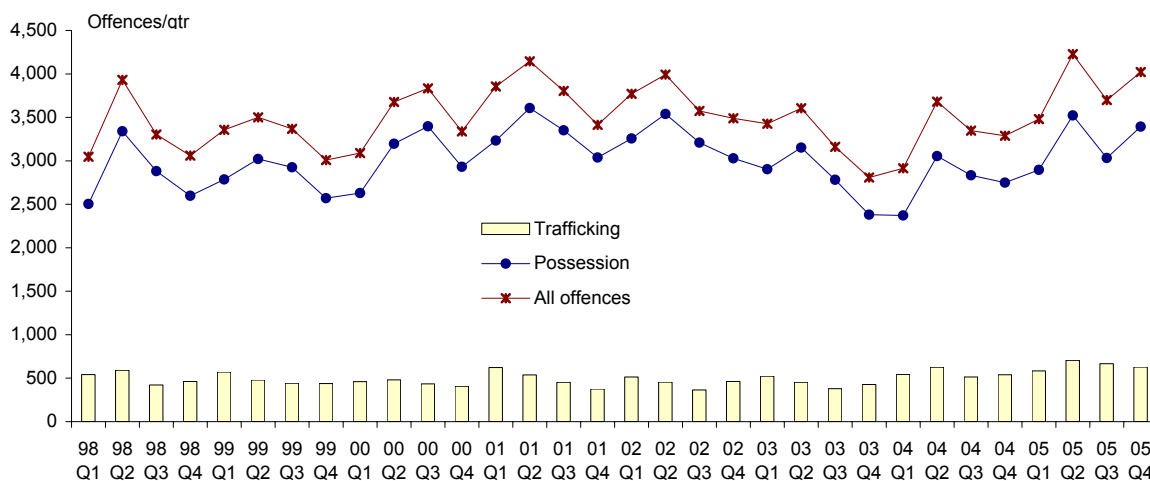
Police Regions & Districts

Note: A breakdown of offences at a regional level is available from the September quarter 2000, when the present system of regional boundaries was introduced.

The majority of drug offences occurred in the Metropolitan Region, accounting for nearly two thirds of all drug offences in the State.

In the December quarter 2005 there was a total of 3,771 processed persons charged with drug offences, of whom 2,564 (68.0%) were in the Metropolitan Region, 720 (19.1%) were in the Southern Region and 487 (12.9%) were in the North East Region.

Figure 1
Quarterly drug offences by type of offence, WA, 1998 - 2005



Version: 8 August 2006

A breakdown of quarterly offences by age group, which is counted on *processed persons*, shows that about three quarters of all drug offences involved persons aged between 15 and 34 years.

In the December quarter 2005, there was a total of 3,771 processed persons, of whom:

- 62 (1.6%) were aged less than 15 years;
- 813 (21.6%) were aged 15 to 19 years;
- 782 (20.7%) were aged 20 to 24 years;
- 1,168 (31.0%) were aged 25 to 34 years;
- 697 (18.5%) were aged 35 to 44 years; and
- 249 (6.6%) were aged 45 years and older.

Metropolitan Region

In the December quarter 2005 there was a total of 2,564 processed persons in the Metropolitan Region charged with drug offences, which by Police District (PD) were:

- South East Metro - 499 (19.5%);
- South Metro - 547 (21.3%);

Table 1
Drug offences by type of offence
WA, 1998 - 2005

	Possession	Trafficking	Total
1998	11,324	2,017	13,341
1999	11,339	1,928	13,231
2000	12,155	1,782	13,937
2001	13,229	1,989	15,218
2002	13,033	1,793	14,826
2003	11,220	1,782	13,002
2004	11,009	2,223	13,232
2005	12,844	2,585	15,429

Note: Count is based on offences not processed persons.

Table 2
Seizures by type of drug, WA, 1998 - 2005

	1998	1999	2000	2001	2002	2003	2004	2005
Amphetamine	1,019	1,360	2,016	2,675	1,639	1,569	2,268	2,532
Cannabis	16,798	17,467	16,746	17,198	12,781	10,403	9,644	10,337
Cocaine	79	12	31	50	12	20	31	23
Dexamphetamine	52	88	111	156	156	60	6	-
Heroin	852	808	661	296	137	181	153	139
LSD	91	77	104	47	21	16	6	24
MDA	-	-	-	32	29	12	-	-
MDMA (Ecstasy)	190	214	337	407	218	245	384	422
Methylamphetamine	41	88	156	349	183	341	19	-
Morphine	27	40	25	43	64	50	12	-
Opium	11	43	14	18	6	25	7	4
Other	251	255	379	433	282	534	528	717
Unknown	551	660	2,474	1,091	571	313	500	639
Total	19,962	21,112	23,054	22,795	16,099	13,794	13,558	14,837

- North West Metro - 317 (12.4%);
- East Metro - 290 (11.3%);
- West Metro - 409 (16.0%); and
- Central Metro - 502 (19.6%).

In the December quarter 2005 there was a total of 2,735 offences, of which 2,340 (85.6%) were possession offences and 395 (14.4%) were trafficking offences.

A breakdown of data for the Metropolitan Region by age group, which is counted on *processed persons*, shows about three quarters of all drug offences involved persons aged between 15 and 34 years. In the December quarter 2005 there was a total of 2,564 processed persons (excluding cases where age is not known), of whom:

- 34 (1.3%) were aged less than 15 years;
- 551 (21.5%) were aged 15 to 19 years;
- 569 (22.2%) were aged 20 to 24 years;
- 788 (30.7%) were aged 25 to 34 years;
- 466 (18.2%) were aged 35 to 44 years; and
- 156 (6.1%) were aged 45 years and older.

There has been a shift since mid 2000 in the age composition of persons charged with drug offences, with a decrease of younger age groups and an increase of older age groups.

Southern Region

In the December quarter 2005 there was a total of 720 processed persons in the Southern Region charged with drug offences, which by PD were:

- Great Southern - 153 (21.3%);
- Peel - 170 (23.6%);
- South West - 263 (36.5%); and
- Wheatbelt - 134 (18.6%).

In the December quarter 2005 there was a total of 781 offences, of which 626 (80.2%) were possession offences and 155 (19.9%) were trafficking offences.

A breakdown of data for the Southern Region by age group, which is counted on *processed persons*, shows that about seven out of 10 of all drug offences involved persons aged between 15 and 34 years.

In the December quarter 2005 there was a total of 720 processed persons (excluding cases where age is not known), of whom:

- 16 (2.2%) were aged less than 15 years;
- 176 (24.4%) were aged 15 to 19 years;
- 119 (16.5%) were aged 20 to 24 years;
- 207 (28.8%) were aged 25 to 34 years;
- 149 (20.7%) were aged 35 to 44 years; and
- 53 (7.4%) were aged 45 years and older.

North East Region

In the December quarter 2005 there was a total of 487 processed persons in the North East Region charged with drug offences, which by PD were:

- Goldfields-Esperance - 162 (33.3%);
- Kimberley - 90 (18.5%);
- Midwest-Gascoyne region - 155 (31.8%); and
- Pilbara - 80 (16.4%).

In the December quarter 2005 there was a total of 506 offences, of which 428 (84.6%) were possession offences and 78 (15.4%) were trafficking offences.

A breakdown of data for the North East Region by age group, which is counted on *processed persons*, shows that about three quarters of all drug offences involved persons aged between 15 and 34 years.

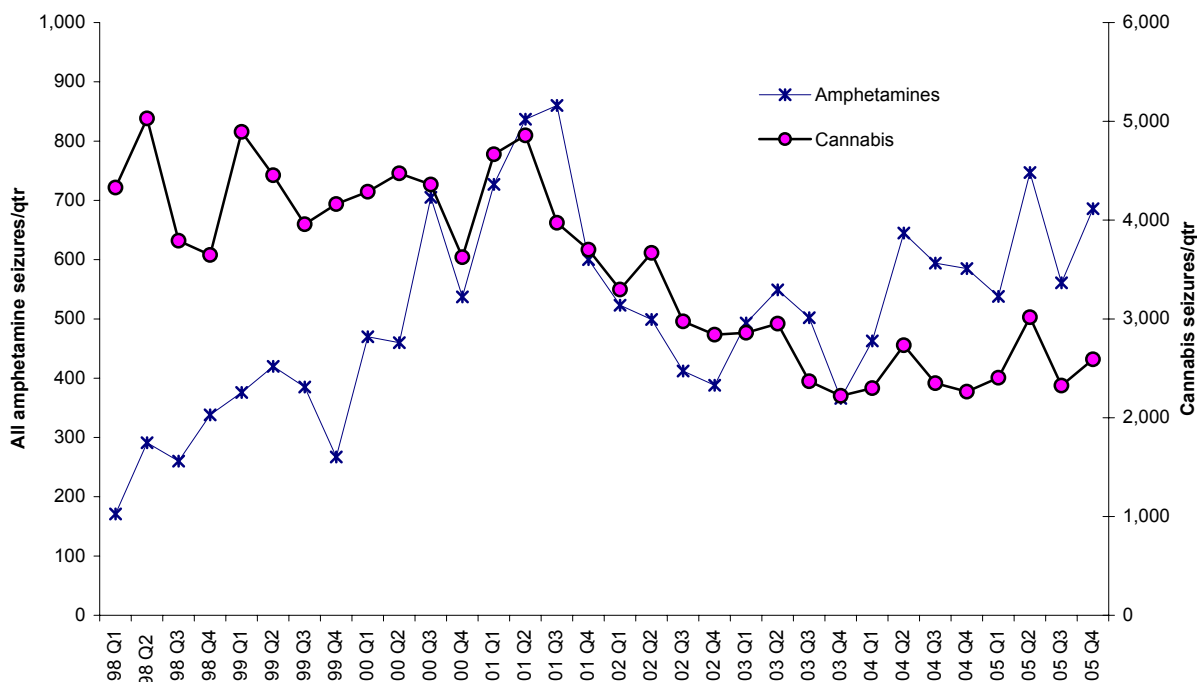
In the December quarter 2005 there was a total of 487 processed persons (excluding cases where age is not known), of whom:

- 12 (2.5%) were aged less than 15 years;
- 86 (17.7%) were aged 15 to 19 years;
- 94 (19.3%) were aged 20 to 24 years;
- 173 (35.5%) were aged 25 to 34 years;
- 82 (16.8%) were aged 35 to 44 years; and
- 40 (8.2%) were aged 45 years and older.

Drug Seizures

Annual drug seizures from 1998 to 2005 by the major types of drugs are presented in Table 2 (page 2). This data shows a marked decline over the eight years in the frequency of seizures involving heroin, whereas seizures involving amphetamine type stimulants (ie amphetamine and methylamphetamine) increased.

Figure 2
Quarterly cannabis & all amphetamine seizures, WA, 1998 - 2005



Other notable trends have been the decline in cannabis seizures since 2001, with about 10,000 seizures per year from 2003 to 2005, compared to about 17,000 seizures per year between 1998 and 2001.

Another trend has been a cyclical pattern in seizures involving ecstasy (MDMA), which increased from 190 in 1998 to 407 in 2001, then declined to 218 in 2002 and have since increased steadily, reaching 422 in 2005.

Total seizures of all drugs increased by 15.5%, from 19,962 in 1998 to 23,054 in 2000, then fell by 41.2% to 13,558 in 2004. In 2005 the number of seizures grew to 14,837 in 2005, an increase of 9.4% from the previous year.

The proportion of total seizures involving cannabis decreased over the eight year period, from 84.1% of all seizures in 1998 to 69.7% of all seizures in 2005.

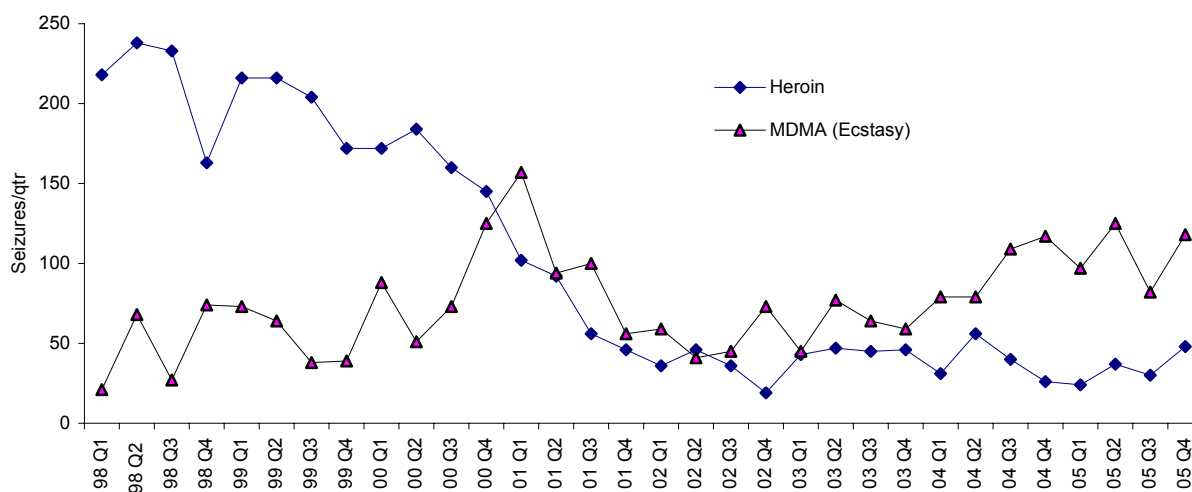
Quarterly trends for seizures involving cannabis and amphetamine type stimulants (ie amphetamines and methylamphetamines) and heroin and ecstasy are presented in Figure 2 (page 3) and Figure 3, respectively.

Figure 2 shows the growing significance of amphetamine type stimulants (ATS) as a target of police activity over the period from 1998 to the present. Seizures of ATS rapidly increased from 171 in the March quarter 1998 to 860 in the September quarter 2001. The number of ATS seizures then decreased to 388 in the December quarter 2002. There has then been a steady increase in ATS seizures throughout the last three years with 686 seizures in the December quarter 2005.

Cannabis seized steadily declined from a peak of 5,029 cannabis seizures in the June quarter 1998 to 2,221 in the December quarter 2003. Throughout 2004 and 2005 seizures of cannabis were relatively constant, with just under 2,500 seizures per quarter over most of the period.

From 1998 to 2005 there has been a consistent decline in the number of seizures involving heroin. Whereas from the March quarter 1998 to the end of 2000 there was a greater number of seizures involving heroin than ecstasy, since mid 2002 ecstasy seizures have increased and exceeded quarterly heroin seizures over the past four years (Figure 3).

Figure 3
Quarterly heroin & ecstasy seizures, WA, 1998 - 2005



To view or download detailed data tables and figures and a description of the methodology associated with this report go to the Drug and Alcohol Office website here.



Drug Related Offences & Seizures, WA 1998 - 2005- Data Tables & Figures

Table A1-1
Drug offences by type of offence, WA, 1998 - 2005

	Possession	Trafficking	Total		Possession	Trafficking	Total
1998				2002			
Qtr 1	2,505	542	3,047	Qtr 1	3,257	513	3,770
Qtr 2	3,340	591	3,931	Qtr 2	3,538	454	3,992
Qtr 3	2,881	422	3,303	Qtr 3	3,210	364	3,574
Qtr 4	2,598	462	3,060	Qtr 4	3,028	462	3,490
Total	11,324	2,017	13,341	Total	13,033	1,793	14,826
1999				2003			
Qtr 1	2,786	570	3,356	Qtr 1	2,903	523	3,426
Qtr 2	3,021	479	3,500	Qtr 2	3,153	453	3,606
Qtr 3	2,962	441	3,367	Qtr 3	2,783	379	3,162
Qtr 4	2,570	438	3,008	Qtr 4	2,381	427	2,808
Total	11,339	1,928	13,231	Total	11,220	1,782	13,002
2000				2004			
Qtr 1	2,629	460	3,089	Qtr 1	2,371	543	2,914
Qtr 2	3,197	480	3,677	Qtr 2	3,055	626	3,681
Qtr 3	3,398	435	3,833	Qtr 3	2,834	514	3,348
Qtr 4	2,931	407	3,338	Qtr 4	2,749	540	3,289
Total	12,155	1,782	13,937	Total	11,009	2,223	13,232
2001				2005			
Qtr 1	3,233	623	3,856	Qtr 1	2,896	584	3,480
Qtr 2	3,607	538	4,145	Qtr 2	3,522	706	4,228
Qtr 3	3,351	453	3,804	Qtr 3	3,032	667	3,699
Qtr 4	3,038	375	3,413	Qtr 4	3,394	628	4,022
Total	13,229	1,989	15,218	Total	12,844	2,585	15,429

Note: Count is based on offences not processed persons.

Table A1-2
Drug offences by Police Region and Police District (processed persons), WA, 2000 - 2001

	2000		2001			
	Qtr 3	Qtr 4	Qtr 1	Qtr 2	Qtr 3	Qtr 4
Metropolitan Region						
South East Metro	400	296	424	432	433	429
South Metro	652	586	663	690	726	556
North West Metro	397	243	352	355	308	285
East Metro	278	265	313	251	258	225
West Metro	417	372	451	462	372	397
Central Metro	470	406	363	449	497	357
Sub total	2,614	2,168	2,566	2,639	2,594	2,249
Southern Region						
Great Southern	134	153	236	238	152	158
Peel	106	65	124	173	126	130
South West	215	245	277	353	255	197
Wheatbelt	153	123	110	134	119	119
Sub total	608	586	747	898	652	604
North East Region						
Goldfields-Esperance	279	302	230	245	204	263
Kimberley	124	43	74	59	64	57
Midwest-Gascoyne	108	181	159	188	160	133
Pilbara	100	58	850	116	130	107
Sub total	611	584	543	608	558	560
Total State	3,833	3,338	3,856	4,145	3,804	3,413

Note: Count is based on processed persons not offences.

Table A1-3
Drug offences by Police Region and Police District (processed persons), WA, 2002 - 2003

	2002				2003			
	Qtr 1	Qtr 2	Qtr 3	Qtr 4	Qtr 1	Qtr 2	Qtr 3	Qtr 4
Metropolitan Region								
South East Metro	417	415	412	337	339	368	367	261
South Metro	638	619	502	565	424	543	364	290
North West Metro	267	373	296	256	245	306	309	239
East Metro	248	341	283	278	285	283	292	270
West Metro	411	412	373	388	407	391	333	304
Central Metro	403	423	452	388	321	388	308	235
Sub total	2,384	2,583	2,318	2,212	2,021	2,279	1,973	1,599
Southern Region								
Great Southern	234	234	193	167	163	221	165	218
Peel	177	125	152	97	151	113	87	114
South West	287	335	259	317	334	341	270	248
Wheatbelt	92	144	149	115	125	73	106	99
Sub total	790	838	753	696	773	748	628	679
North East Region								
Goldfields-Esperance	281	244	256	271	325	257	223	278
Kimberley	61	67	62	82	60	73	108	71
Midwest-Gascoyne	156	173	87	120	186	168	131	111
Pilbara	98	87	98	109	61	81	99	70
Sub total	596	571	503	582	632	579	561	530
Total State	3,770	3,992	3,574	3,490	3,426	3,606	3,162	2,808

Note: Count is based on processed persons not offences.

Table A1-4
Drug offences by Police Region and Police District (processed persons), WA, 2004 - 2005

	2004				2005			
	Qtr 1	Qtr 2	Qtr 3	Qtr 4	Qtr 1	Qtr 2	Qtr 3	Qtr 4
Metropolitan Region								
South East Metro	281	566	430	452	407	495	427	499
South Metro	356	415	363	336	476	507	491	547
North West Metro	275	397	408	263	355	389	270	317
East Metro	211	364	305	262	193	347	209	290
West Metro	379	637	460	373	311	396	339	409
Central Metro	287	411	345	365	392	452	548	502
Sub total	1,789	2,790	2,311	2,051	2,134	2,586	2,284	2,564
Southern Region								
Great Southern	265	149	179	241	236	210	182	153
Peel	121	159	102	130	135	165	92	170
South West	264	395	413	204	331	324	370	263
Wheatbelt	111	133	65	160	123	168	110	134
Sub total	761	836	759	735	825	867	754	720
North East Region								
Goldfields-Esperance	196	172	156	263	226	262	158	162
Kimberley	42	76	167	96	46	61	74	90
Midwest-Gascoyne	137	176	130	155	121	172	136	155
Pilbara	73	59	110	131	77	76	73	80
Sub total	448	483	563	645	470	571	441	487
Total State	2,998	4,109	3,633	3,431	3,429	4,024	3,479	3,771

Note: Count is based on processed persons not offences.

Table A1-5
Drug offences by age group (processed persons), WA, 1998 - 2001

	<15	15-19	20-24	25-34	35-44	45+	Total
1998							
Qtr 1	147	810	716	835	420	115	3,043
Qtr 2	232	1,126	817	1,116	513	127	3,931
Qtr 3	217	1,062	702	870	340	98	3,289
Qtr 4	149	930	712	807	360	101	3,059
Total	745	3,928	2,947	3,628	1,633	441	13,322
1999							
Qtr 1	150	906	705	998	446	151	3,356
Qtr 2	213	1,016	751	996	388	136	3,500
Qtr 3	186	1,035	688	923	415	120	3,367
Qtr 4	126	872	720	828	346	161	3,008
Total	675	3,829	2,864	3,745	1,595	568	13,231
2000							
Qtr 1	93	905	715	859	399	118	3,089
Qtr 2	174	1,179	774	1,015	413	122	3,677
Qtr 3	143	1,135	893	1,093	461	108	3,833
Qtr 4	173	940	726	943	444	112	3,338
Total	583	4,159	3,108	3,910	1,717	460	13,937
2001							
Qtr 1	157	826	803	1,164	532	153	3,635
Qtr 2	216	950	832	1,184	531	164	3,877
Qtr 3	133	911	852	1,018	498	160	3,572
Qtr 4	159	857	709	921	407	149	3,202
Total	665	3,544	3,196	4,287	1,968	626	14,286

Note: Excludes cases where age is unknown.
 Count is based on processed persons not offences.

Table A1-6
Drug offences by age group (processed persons), WA, 2002 - 2005

	<15	15-19	20-24	25-34	35-44	45+	Total
2002							
Qtr 1	100	902	915	1,110	527	178	3,732
Qtr 2	198	991	772	1,118	586	176	3,841
Qtr 3	139	976	732	948	464	148	3,407
Qtr 4	114	826	695	993	536	195	3,359
Total	551	3,695	3,114	4,169	2,113	697	14,339
2003							
Qtr 1	96	690	647	975	602	215	3,225
Qtr 2	166	830	837	975	530	171	3,509
Qtr 3	105	790	707	931	491	189	3,213
Qtr 4	83	724	613	737	496	167	2,820
Total	450	3,034	2,804	3,618	2,119	742	12,767
2004							
Qtr 1	49	723	641	873	527	185	2,998
Qtr 2	113	976	877	1,173	696	276	4,109
Qtr 3	88	719	852	1,193	618	163	3,633
Qtr 4	71	785	812	1,013	547	203	3,431
Total	321	3,203	3,182	4,252	2,388	827	14,171
2005							
Qtr 1	75	771	696	1,036	595	256	3,429
Qtr 2	138	857	856	1,271	605	297	4,024
Qtr 3	86	676	742	988	636	351	3,479
Qtr 4	62	813	782	1,168	697	249	3,771
Total	361	3,117	3,076	4,463	2,533	1,153	14,703

Note: Excludes cases where age is unknown.

Table A1-7
Quarterly drug offences by type of offence
WA - Metropolitan Region, 2000 - 2005

	Possession	Trafficking	Total
2000			
Qtr 1	-	-	-
Qtr 2	-	-	-
Qtr 3	2,287	278	2,565
Qtr 4	1,922	246	2,168
Total	4,209	524	4,733
2001			
Qtr 1	2,165	401	2,566
Qtr 2	2,289	350	2,639
Qtr 3	2,278	316	2,594
Qtr 4	2,029	220	2,249
Total	8,761	1,287	10,048
2002			
Qtr 1	2,083	301	2,384
Qtr 2	2,299	284	2,583
Qtr 3	2,087	231	2,318
Qtr 4	1,940	272	2,212
Total	8,409	1,088	9,497
2003			
Qtr 1	1,743	278	2,021
Qtr 2	2,012	267	2,279
Qtr 3	1,727	246	1,973
Qtr 4	1,352	247	1,599
Total	6,834	1,038	7,872
2004			
Qtr 1	1,434	312	1,746
Qtr 2	2,096	384	2,480
Qtr 3	1,905	322	2,227
Qtr 4	1,742	327	2,069
Total	7,177	1,345	8,522
2005			
Qtr 1	1,865	332	2,197
Qtr 2	2,284	143	900
Qtr 3	1,971	457	2,428
Qtr 4	2,340	395	2,735
Total	8,460	1,327	8,260

Note: Count is based on offences not processed persons.

Table A1-8
Drug offences by age group (processed persons)
WA - Metropolitan Region, 2000 - 2005

	<15	15-19	20-24	25-34	35-44	45+	Total
2000							
Qtr 1	-	-	-	-	-	-	-
Qtr 2	-	-	-	-	-	-	-
Qtr 3	95	862	636	678	294	-	2,565
Qtr 4	122	644	492	559	288	63	2,168
Total	217	1,506	1,128	1,237	582	63	4,733
2001							
Qtr 1	111	572	514	755	337	95	2,384
Qtr 2	131	656	555	743	332	94	2,511
Qtr 3	93	642	600	684	309	97	2,425
Qtr 4	86	630	467	605	230	72	2,090
Total	421	2,500	2,136	2,787	1,208	358	9,410
2002							
Qtr 1	63	608	618	654	287	111	2,341
Qtr 2	106	665	471	703	358	102	2,405
Qtr 3	74	667	473	636	264	82	2,196
Qtr 4	72	590	446	585	310	108	2,111
Total	315	2,530	2,008	2,578	1,219	403	9,053
2003							
Qtr 1	51	449	377	532	294	89	1,792
Qtr 2	92	547	495	644	321	90	2,189
Qtr 3	58	527	471	559	310	95	2,020
Qtr 4	39	448	373	421	252	89	1,622
Total	240	1,971	1,716	2,156	1,177	363	7,623
2004							
Qtr 1	28	460	406	540	269	86	1,789
Qtr 2	61	699	596	782	457	195	2,790
Qtr 3	46	503	598	710	343	111	2,311
Qtr 4	45	511	508	584	312	91	2,051
Total	180	2,173	2,108	2,616	1,381	483	8,941
2005							
Qtr 1	40	578	442	592	357	125	2,134
Qtr 2	67	583	538	832	378	188	2,586
Qtr 3	58	451	447	618	434	276	2,284
Qtr 4	34	551	569	788	466	156	2,564
Total	199	2,163	1,996	2,830	1,635	745	9,568

Note: Excludes cases where age is unknown.

Table A1-9
Drug offences by type of offence
WA - Southern Region, 2000 - 2005

	Possession	Trafficking	Total
2000			
Qtr 1	-	-	-
Qtr 2	-	-	-
Qtr 3	536	72	608
Qtr 4	411	37	448
Total	947	109	1,056
2001			
Qtr 1	584	163	747
Qtr 2	773	125	898
Qtr 3	573	79	652
Qtr 4	503	101	604
Total	2,433	468	2,901
2002			
Qtr 1	629	161	790
Qtr 2	710	128	838
Qtr 3	658	95	753
Qtr 4	562	134	696
Total	2,559	518	3,077
2003			
Qtr 1	607	166	773
Qtr 2	647	101	748
Qtr 3	560	68	628
Qtr 4	561	118	679
Total	2,375	453	2,828
2004			
Qtr 1	579	164	743
Qtr 2	584	181	765
Qtr 3	525	84	609
Qtr 4	568	139	707
Total	2,256	568	2,824
2005			
Qtr 1	614	199	813
Qtr 2	757	143	900
Qtr 3	652	159	811
Qtr 4	626	155	781
Total	2,649	656	3,305

Note: Count is based on offences not processed persons.

Table A1-10
Drug offences by age group (processed persons)
WA - Southern Region, 2000 - 2005

	<15	15-19	20-24	25-34	35-44	45+	Total
2000							
Qtr 1	-	-	-	-	-	-	-
Qtr 2	-	-	-	-	-	-	-
Qtr 3	20	181	116	179	76	36	608
Qtr 4	21	83	96	174	74	-	448
Total	41	264	212	353	150	36	1,056
2001							
Qtr 1	32	168	147	229	127	28	731
Qtr 2	64	200	163	265	118	41	851
Qtr 3	25	163	144	162	99	34	627
Qtr 4	54	136	111	126	95	43	565
Total	175	667	565	782	439	146	2,774
2002							
Qtr 1	21	181	137	256	140	37	772
Qtr 2	57	197	172	233	126	51	836
Qtr 3	53	219	128	180	104	39	723
Qtr 4	29	152	128	198	114	42	663
Total	160	749	565	867	484	169	2,994
2003							
Qtr 1	32	168	157	216	141	84	798
Qtr 2	50	195	159	165	116	37	722
Qtr 3	24	162	138	190	84	45	643
Qtr 4	16	179	150	164	120	29	658
Total	122	704	604	735	461	195	2,821
2004							
Qtr 1	13	173	158	191	169	57	761
Qtr 2	34	187	172	254	143	46	836
Qtr 3	20	162	147	253	147	30	759
Qtr 4	9	194	133	193	140	66	735
Total	76	716	610	891	599	199	3,091
2005							
Qtr 1	22	128	134	280	177	84	825
Qtr 2	39	201	201	228	126	72	867
Qtr 3	21	160	193	222	122	36	754
Qtr 4	16	176	119	207	149	53	720
Total	98	665	647	937	574	245	3,166

Note: Excludes cases where age is unknown.

Table A1-11
Drug offences by type of offence
WA - North East Region, 2000 - 2005

	Possession	Trafficking	Total
2000			
Qtr 1	-	-	-
Qtr 2	-	-	-
Qtr 3	547	64	611
Qtr 4	566	107	673
Total	1,113	171	1,284
2001			
Qtr 1	484	59	543
Qtr 2	545	63	608
Qtr 3	500	58	558
Qtr 4	506	54	560
Total	2,035	234	2,269
2002			
Qtr 1	545	51	596
Qtr 2	529	42	571
Qtr 3	465	38	503
Qtr 4	526	56	582
Total	2,065	187	2,252
2003			
Qtr 1	553	79	632
Qtr 2	494	85	579
Qtr 3	496	65	561
Qtr 4	468	62	530
Total	2,011	291	2,302
2004			
Qtr 1	358	67	425
Qtr 2	375	61	436
Qtr 3	404	108	512
Qtr 4	439	74	513
Total	1,576	310	1,886
2005			
Qtr 1	417	53	470
Qtr 2	481	84	565
Qtr 3	409	51	460
Qtr 4	428	78	506
Total	1,735	266	2,001

Note: Count is based on offences not processed persons.

Table A1-12
Drug offences by age group (processed persons)
WA - North East Region, 2000 - 2005

	<15	15-19	20-24	25-34	35-44	45+	Total
2000							
Qtr 1	-	-	-	-	-	-	-
Qtr 2	-	-	-	-	-	-	-
Qtr 3	28	92	141	236	91	23	611
Qtr 4	30	213	138	210	82	-	673
Total	58	305	279	446	173	23	1,284
2001							
Qtr 1	14	86	142	180	68	30	520
Qtr 2	22	108	130	197	92	30	579
Qtr 3	15	106	108	172	90	29	520
Qtr 4	19	91	131	1960	82	34	547
Total	70	391	511	2,509	332	123	2,166
2002							
Qtr 1	16	113	160	200	100	30	619
Qtr 2	35	129	129	182	102	23	600
Qtr 3	12	90	131	132	96	27	488
Qtr 4	13	84	121	210	112	45	585
Total	76	416	541	724	410	125	2,292
2003							
Qtr 1	13	73	113	227	167	42	635
Qtr 2	24	88	183	166	93	44	598
Qtr 3	23	101	98	182	97	49	550
Qtr 4	28	97	90	152	124	49	540
Total	88	359	484	727	481	184	2,323
2004							
Qtr 1	8	90	77	142	89	42	448
Qtr 2	18	88	109	137	96	35	483
Qtr 3	22	54	107	230	128	22	563
Qtr 4	17	80	171	236	95	46	645
Total	65	312	464	745	408	145	2,139
2005							
Qtr 1	13	65	120	164	61	47	470
Qtr 2	32	73	117	211	101	37	571
Qtr 3	7	65	102	148	80	39	441
Qtr 4	12	86	94	173	82	40	487
Total	64	289	433	696	324	163	1,969

Note: Excludes cases where age is unknown.

Data Tables - Seizures

Table A2-1
Seizures by type of drug, WA, 1998 - 2001

	1998		1999		2000		2001	
	n	%	n	%	n	%	n	%
Amphetamines	1,060	5.3	1,448	6.9	2,172	9.4	3,024	13.3
Cannabis	16,798	84.1	17,467	82.7	16,746	72.6	17,198	75.4
Cocaine	79	0.4	12	0.1	31	0.1	50	0.2
Dexamphetamine	52	0.3	88	0.4	111	0.5	156	0.7
Heroin	852	4.3	808	3.8	661	2.9	296	1.3
Ecstasy (MDMA)	190	1.0	214	1.0	337	1.5	407	1.8
LSD	91	0.5	77	0.4	104	0.5	47	0.2
MDA	-	-	-	-	-	-	32	0.1
Morphine	27	0.1	40	0.2	25	0.1	43	0.2
Opium	11	0.1	43	0.2	14	0.1	18	0.1
Other	251	1.3	255	1.2	379	1.6	433	1.9
Unknown	551	2.8	660	3.1	2,474	10.7	1,091	4.8
Total	19,962	100.0	21,112	100.0	23,054	100.0	22,795	100.0

Note: Amphetamines includes both amphetamine and methylamphetamine seizures.

Table A2-2
Seizures by type of drug, WA, 2002 - 2005

	2002		2003		2004		2005	
	n	%	n	%	n	%	n	%
Amphetamines	1,822	11.3	1,910	13.9	2,287	16.9	2,532	17.1
Cannabis	12,781	79.4	10,403	75.4	9,644	71.1	10,337	69.7
Cocaine	12	0.1	20	0.1	31	0.2	23	0.2
Dexamphetamine	156	1.0	60	0.4	6	<0.1	-	-
Ecstasy (MDMA)	218	1.4	245	1.8	384	2.8	422	2.8
Heroin	137	0.9	181	1.3	153	1.1	139	0.9
LSD	21	0.1	16	0.1	6	<0.1	24	0.2
MDA	29	0.2	12	0.1	-	-	-	-
Morphine	64	0.4	50	0.4	12	0.1	-	-
Opium	6	0.1	25	0.2	7	0.1	4	<0.1
Other	282	1.8	534	3.9	528	3.9	717	4.8
Unknown	571	3.5	313	2.5	500	3.7	639	4.3
Total	16,099	100.0	13,794	100.0	13,558	100.0	14,837	100.0

Table A2-3
Seizures by type of drug, WA, 1998 - 1999

	1998				1999			
	Qtr 1	Qtr 2	Qtr 3	Qtr 4	Qtr 1	Qtr 2	Qtr 3	Qtr 4
Amphetamines	171	291	260	338	376	420	385	267
Cannabis	4,330	5,029	3,792	3,647	4,893	4,454	3,958	4,162
Cocaine	11	24	24	20	1	2	3	6
Dexamphetamine	5	13	21	13	19	22	23	24
Ecstasy (MDMA)	21	68	27	74	73	64	38	39
Heroin	218	238	233	163	216	216	204	172
LSD	22	25	20	24	20	17	11	29
MDA	-	-	-	-	-	-	-	-
Morphine	7	8	7	5	2	11	16	11
Opium	6	-	-	5	2	-	-	41
Other	65	100	46	40	66	80	49	60
Unknown powder	112	193	126	120	103	187	211	159
Total	4,968	5,989	4,556	4,449	5,771	5,473	4,898	4,970

Table A2-4
Seizures by type of drug, WA, 2000 - 2001

	2000				2001			
	Qtr 1	Qtr 2	Qtr 3	Qtr 4	Qtr 1	Qtr 2	Qtr 3	Qtr 4
Amphetamines	470	460	705	537	727	837	860	600
Cannabis	4,287	4,473	4,361	3,625	4,666	4,858	3,973	3,701
Cocaine	3	2	5	21	19	4	9	18
Dexamphetamine	26	22	37	26	37	42	42	35
Ecstasy (MDMA)	88	51	73	125	157	94	100	56
Heroin	172	184	160	145	102	92	56	46
LSD	37	35	16	16	27	12	2	6
MDA	-	-	-	-	8	9	8	7
Morphine	10	4	4	7	8	9	16	10
Opium	9	1	-	4	3	-	9	6
Other	137	58	74	110	106	156	87	84
Unknown powder	1,525	310	381	258	321	259	196	315
Total	6,764	5,600	5,816	4,874	6,181	6,372	5,358	4,884

Table A2-5
Seizures by type of drug, WA, 2002 - 2003

	2002				2003			
	Qtr 1	Qtr 2	Qtr 3	Qtr 4	Qtr 1	Qtr 2	Qtr 3	Qtr 4
Amphetamine	523	499	412	388	493	549	502	366
Cannabis	3,297	3,669	2,975	2,840	2,860	2,953	2,369	2,221
Cocaine	5	2	3	2	2	8	3	7
Dexamphetamine	37	28	44	47	28	20	5	7
Ecstasy (MDMA)	59	41	45	73	45	77	64	59
Heroin	36	46	36	19	43	47	45	46
LSD	5	4	6	6	5	5	2	4
MDA	4	10	4	11	6	3	3	-
Morphine	15	22	18	9	29	7	10	4
Opium	1	1	-	4	3	2	3	17
Other	68	82	73	59	110	121	159	144
Unknown powder	139	166	139	127	122	127	64	25
Total	4,189	4,570	3,755	3,585	3,746	3,919	3,229	2,900

Table A2-6
Seizures by type of drug, WA, 2004 - 2005

	2004				2005			
	Qtr 1	Qtr 2	Qtr 3	Qtr 4	Qtr 1	Qtr 2	Qtr 3	Qtr 4
Amphetamine	463	645	594	585	538	747	561	686
Cannabis	2,299	2,733	2,349	2,263	2,404	3,017	2,325	2,591
Cocaine	1	1	24	5	9	8	2	4
Dexamphetamine	4	2	-	-	-	-	-	-
Ecstasy (MDMA)	79	79	109	117	97	125	82	118
Heroin	31	56	40	26	24	37	30	48
LSD	-	1	3	2	4	12	4	4
MDA	-	-	-	-	-	-	-	-
Morphine	11	1	-	-	-	-	-	-
Opium	1	3	3	-	2	1	-	1
Other	93	172	125	138	104	203	215	195
Unknown powder	97	157	125	121	145	181	158	155
Total	3,079	3,850	3,372	3,257	3,327	4,331	3,377	3,802

Methodology

This publication presents data for drug offences and drug seizures based on charges by the Western Australia Police (WAP) and updates data previously published in Statistical Bulletin No. 9 (July 2000), Statistical Bulletin No. 10 (February 2001), Statistical Bulletin No. 12 (May 2001) and Statistical Bulletin No. 16 (May 2005).

The data in this publication counts the number of charges involving offences under the *Misuse of Drugs Act 1981* where a person has been processed by the police. Information about charges is extracted from the Offence Information System (OIS) which records offences where a person has been processed. As data contained in this publication counts multiple offences, it does not provide a count of distinct persons.

Variations occur when comparing different tables, as breakdowns by age group are based on the count of processed persons, whereas breakdowns by offences as 'possession' and 'trafficking' are based on a count of offences. 'Processed persons' refers to adults as well as juveniles who have been arrested, summonsed, cautioned or appeared before a Juvenile Justice Team. This data does not measure court outcomes.

The cross tabulations of age group are based on the count of processed persons, whereas the breakdown of offences into 'possession' and 'trafficking' is based on a count of offences. As an offender may be charged with more than one offence there will be different counts of the total of drug offences for a quarterly period.

This data reflects police activity and accordingly deals with reported crime which has been detected and resulted in the apprehension of an offender. There are some difficulties in relation to interpretation of data from the seizure database, which is separate from the OIS. The data files for seizures are unstructured, lack uniform definitions and are unreliable as in some instances the type of drug seized cannot be readily identified. This also means that the type of drug cannot be readily determined in relation to each offence.

As there may be multiple seizures of drugs for each offence report, duplicate seizures have been removed so that the count of seizures is based on the most serious processed offence on a scale from - (1) sell/supply (the most serious offence), (2) cultivation, (3) manufacture and (4) possession/use (the least serious offence).

Offences are aggregated into two broad groups, 'possession' and 'trafficking'. 'Possession' refers to two types of offences, possession/use of drugs and possession of implements, both of which are simple offences and dealt with summarily in a Court of Petty Sessions.

Since 22 March 2004 infringements can be issued under the *Cannabis Control Act 2003* by police for any of three minor cannabis offences under the cannabis infringement notice (CIN) scheme. The minor offences of possession of not more than 30 grams of cannabis or possession of a used cannabis smoking paraphernalia are not recorded by the OIS.

The term 'trafficking' refers to the more serious offences of sell/supply, cultivation and manufacture which are usually dealt with in the higher courts. The minor cannabis offence under the CIN scheme of non hydroponic cultivation of not more than two cannabis plants, which is regarded as a 'trafficking' offence, is also not recorded by the OIS.

It should be noted that the OIS does not accurately count the number of plants involving cannabis cultivation offences. This means it is not possible to determine the level of seriousness for this offence and accordingly all cultivation offences are included as a 'trafficking' offence, even though cultivation of less than 10 plants is a simple offence (*Misuse of Drugs Act 1981*, s. 7(2), Schedule VI).

Up to September 2000 police services in Western Australia were organised into 15 Police Districts, grouped into the Metropolitan Region and three country regions (Central Region, Southern Region and Northern Region).

Regional boundaries were revised in 1 July 2000, which took effect from 1 October 2000 and now police services are organised into 14 Police Districts, which are grouped into three regions, the Metropolitan Region, the Southern Region and North East Region, which are reported in this Bulletin.

This publication is available online at
<http://www.dao.health.wa.gov.au>