



Drug and Alcohol Office
Government of Western Australia



Delivering a Healthy WA

Statutory Review

Cannabis Control Act 2003

Supplementary Data Tables & Figures

November 2007

This publication is available online at
<http://www.dao.health.wa.gov.au>

Statutory Review of Cannabis Control Act 2003

Supplementary Data Tables & Figures

Table of Contents

Part 1
CIN scheme data tables and figures1

Part 2
Help seeking data tables and figures15

Part 3
Criminal justice data tables and figures.....30

Part 4
Costs and benefits data tables57

Part 1:

CIN Scheme Data Tables & Figures

Table A1-1
Quarterly processing by FER of unexpired CINs by quarter CIN issued by police
April 2004 - March 2007

	Completed					Not completed								Total	
	Paid in full	Referred to court for hearing	Withdrawn by referring agency	Written off	Sub total	Breached time to pay (TTP)	Court order issued	Current TTP	Expected payment outstanding	Listed for bring up	Listed for write off	Notice of intended suspension issued	Subject to license suspension		Sub total
2004															
Mar qtr	11	-	1	-	12	-	1	-	-	-	-	-	15	16	28
Jun qtr	212	3	11	4	230	5	45	-	1	2	1	239	293	523	
Sep qtr	302	-	6	4	312	7	54	1	-	1	-	219	282	594	
Dec qtr	222	1	8	5	237	8	30	-	3	1	-	190	232	468	
Total	747	4	26	13	791	20	130	1	4	4	1	663	823	1,613	
2005															
Mar qtr	229	-	9	3	241	4	41	-	-	3	-	193	241	482	
Jun qtr	285	-	7	-	292	4	56	-	1	4	1	226	292	584	
Sep qtr	205	-	4	2	211	7	55	-	1	3	-	188	254	465	
Dec qtr	148	-	4	-	152	3	63	1	2	-	-	189	258	410	
Total	867	-	24	5	896	18	215	1	4	10	1	796	1,045	1,941	
2006															
Mar qtr	132		5	-	137	3	56	1	-	2	-	174	236	373	
Jun qtr	135		7	-	142	4	68	6	-	1	2	231	312	454	
Sep qtr	111		8	-	119	8	43	-	1	3	-	189	244	363	
Dec qtr	43	1	6	-	50	1	21	-	-	-	-	105	127	177	
Total	421	1	26	-	448	16	188	7	1	6	2	699	919	1,367	
2007															
Mar qtr	39	-	19	-	58	3	32	-	2	-	30	134	201	259	
Total	2,074	5	95	18	2,192	57	565	9	11	20	34	2,292	2,988	5,180	

Source: Fines Enforcement Registry, Department of the Attorney General.

Note: March quarter 2004 refers to 22 - 31 March 2004.

Based on CINs issued from 22 March 2004 to 31 March 2007 and reanalysed 7 September 2007.

Table A1-2
CINs by offence & expiation status, April 2004 - March 2007

	Expiated		Unexpiated		Total
	n	%	n	%	n
Possession of implement [s. 5(1)(d)(i)]					
Code 9000 (1st offence)	1,416	41.8	1,969	58.2	3,385
Code 9001 (> 1 offence in 3 years)	8	34.8	15	65.2	23
Sub total	1,424	41.8	1,984	58.2	3,408
Possession of cannabis [s.6(2)]					
<i>Up to 15 gms</i>					
Code 9002 (1st offence)	2,331	43.2	3,063	56.8	5,394
Code 9003 (> 1 offence in 3 years)	10	35.7	18	64.3	28
Sub total	2,341	43.2	3,081	56.8	5,422
<i>15.1 - 30 gms</i>					
Code 9004 (1st offence)	108	44.4	135	55.6	243
Code 9005 (> 1 offence in 3 years)	-	-	-	-	-
Sub total	108	44.4	135	55.6	243
Cultivation of up to 2 plants (non hydroponically) [s. 7(2)]					
Code 9006 (1st offence)	118	46.3	137	53.7	255
Code 9007 (> 1 offence in 3 years)	-	-	-	-	-
Sub total	118	46.3	137	53.7	255
Total	3,991	42.8	5,337	57.2	9,328

Note: > 1 offence in three years refers to multiple CINs received according to s. 9 of the CCA.
CIN scheme applicable from 22 March 2004.

Table A1-3
Expiated CINs by offence & method of expiation, April 2004 - March 2007

	Expiated				Total
	CES completed		Paid		
	n	%	n	%	
Possession of implement [s. 5(1)(d)(i)]					
Code 9000 (1st offence)	480	33.9	936	66.1	1,416
Code 9001 (> 1 offence in 3 years)	6	75.0	2	25.0	8
Possession of cannabis [s. 6(2)]					
<i>Up to 15 gms</i>					
Code 9002 (1st offence)	659	28.3	1,672	71.7	2,331
Code 9003 (> 1 offence in 3 years)	10	100.0	-	-	10
<i>15.1 - 30 gms</i>					
Code 9004 (1st offence)	31	28.7	77	71.3	108
Code 9005 (> 1 offence in 3 years)	-	-	-	-	-
Cultivation of up to 2 plants (non hydroponically) [s. 7(2)]					
Code 9006 (1st offence)	64	54.2	54	45.8	118
Code 9007 (> 1 offence in 3 years)	-	-	-	-	-
Total	1,250	31.3	2,741	68.7	3,991

Note: > 1 offence in three years refers to multiple CINs received according to s. 9 of the CCA.
CIN scheme applicable from 22 March 2004.

Table A1-4
CINs by offence & sex, April 2004 - March 2007

	Females		Males		Total	
	n	%	n	%	n	%
Possession of implement [s. 5(1)(d)(i)]						
Code 9000 (1st offence)	702	37.5	2,683	36.0	3,385	36.3
Code 9001 (> 1 offence in 3 years)	6	0.3	17	0.2	23	0.2
Sub total	708	37.8	2,700	36.2	3,408	36.5
Possession of cannabis [s. 6(2)]						
Up to 15 gms						
Code 9002 (1st offence)	1,014	54.2	4,380	58.7	5,394	57.8
Code 9003 (> 1 offence in 3 years)	6	0.3	22	0.3	28	0.3
15.1 - 30 gms						
Code 9004 (1st offence)	58	3.1	185	2.5	243	2.6
Code 9005 (> 1 offence in 3 years)	-	-	-	-	-	-
Sub total	1,078	57.6	4,587	61.5	5,665	60.7
Cultivation of up to 2 plants (non hydroponically) [s. 7(2)]						
Code 9006 (1st offence)	86	4.6	169	2.3	255	2.7
Code 9007 (> 1 offence in 3 years)	-	-	-	-	-	-
Sub total	86	4.6	169	2.3	255	2.7
Total	1,872	100.0	7,456	100.0	9,328	100.0

Note: > 1 offence in three years refers to multiple CINs received according to s. 9 of the CCA.
 CIN scheme applicable from 22 March 2004.

Figure A1-1
Quarterly CINs by type of offence, June quarter 2004 - March quarter 2007

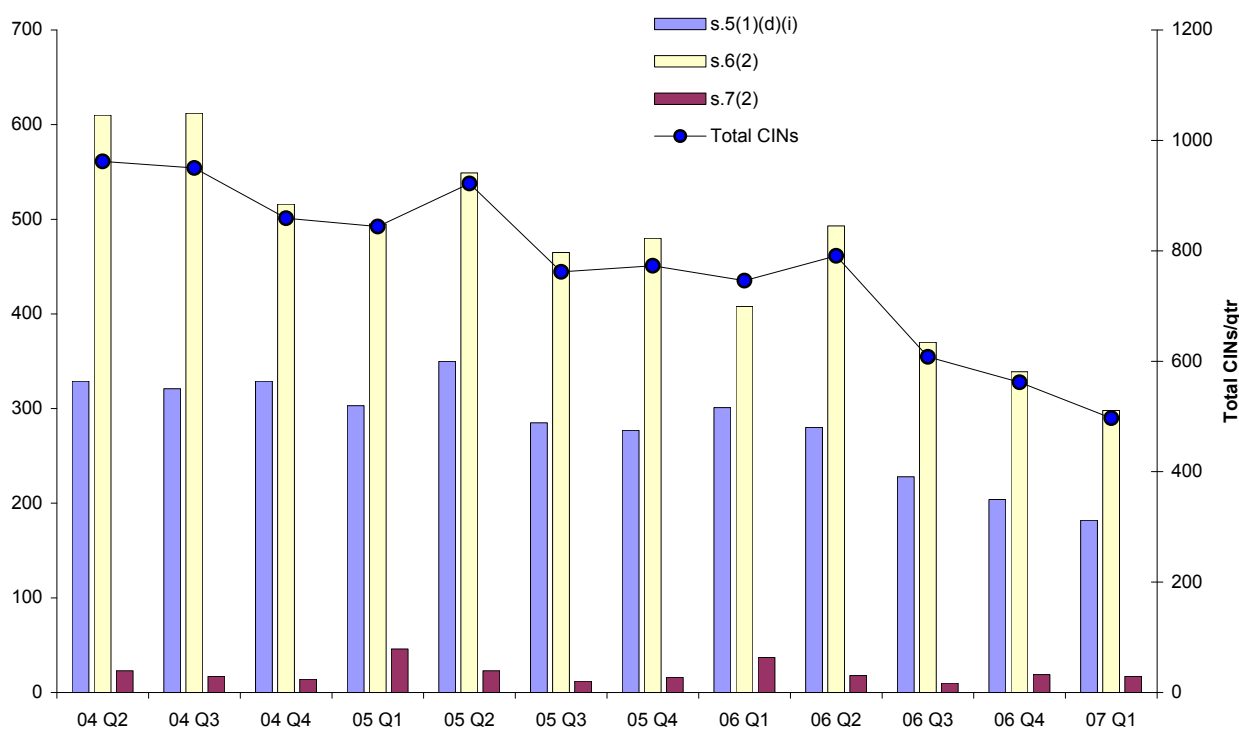


Table A1-5
Frequency of total number of CINs by expiration status, April 2004 - March 2007 - persons

	1 CIN		2 CINs		3 CINs		4 CINs		5+ CINs		Total	
	n	%	n	%	n	%	n	%	n	%	n	%
Fully expiated												
CES	410	8.9	315	16.4	31	14.2	2	4.9	2	15.4	760	11.2
Paid	1,411	30.7	526	27.4	38	17.4	4	9.8	-		1,979	29.1
Paid + CES	-		10	0.5	10	4.6	4	9.8	-		24	0.4
Sub total	1,821	39.6	851	44.3	79	36.1	10	24.4	2	15.4	2,763	40.7
Fully unexpiated												
Unpaid	25	0.5	1	0.1	-		-		-		26	0.4
FER	2,637	57.4	950	49.4	90	41.1	14	34.1	1	7.7	3,692	54.4
Final demand	105	2.3	21	1.1	2	0.9	-		-		128	1.9
Court	7	0.2	4	0.2	1	0.5	-		-		12	0.2
Court + FER	-		-		5	2.3	2	4.9	5	38.5	12	0.2
FER + Final demand	-		3	0.2	2	0.9	2	4.9	-		7	0.1
FER + Unpaid	-		2	0.1	4	1.8	1	2.4	-		7	0.1
FER + Court + Unpaid	-		-		-		1	2.4	1	7.7	2	<0.1
Final demand + Unpaid	-		1	0.1	-		-		-		1	<0.1
Sub total	2,774	60.4	982	51.1	104	47.5	20	48.8	7	53.9	3,887	57.2
Partially expiated												
Paid + FER	-		63	3.3	23	10.5	5	12.2	-		91	1.3
Paid + Court	-		-		1	0.5	-		-		1	<0.1
CES + Final demand	-		1	0.1	-		-		-		1	<0.1
CES + FER	-		20	1.0	10	4.6	5	12.2	2	15.4	37	0.5
Paid + Unpaid	-		2	0.1	-		-		-		2	<0.1
Paid + Final demand	-		3	0.2	1	0.5	-		-		4	0.1
CES + Court	-		-		1	0.5	-		-		1	<0.1
CES + Court + Paid	-		-		-		1	2.4	-		1	<0.1
CES + Court + FER	-		-		-		-		2	15.4	2	<0.1
Sub total	-		89	4.6	36	16.4	11	26.8	4	30.8	140	2.1
Total	4,595	100.0	1,922	100.0	219	100.0	41	100.0	13	100.0	6,790	100.0

Note: The count of partially expiated CINs refers to the total number of CINs which have been issued to a person on different days and as each day has a different statutory period for expiration, at the end of the period some CINs will have not been expiated.
 CIN scheme applicable from 22 March 2004.

Table A1-6
Frequency of multiple CINs issued on separate days by offence, April 2004 - March 2007 - persons

		Total		Sub total
		n	%	%
1 day only				
1 CIN	s.5(1)(d)(i)	1,206	17.8	19.0
	s.6(2)	3,255	47.9	51.3
	s.7(2)	134	2.0	2.1
	Sub total	4,595	67.7	72.4
2 CINs	s.5(1)(d)(i) & s.6(2)	1,602	23.6	25.2
	s.5(1)(d)(i) & s.7(2)	29	0.4	0.5
	s.5(1)(d)(i) & s.5(1)(d)(i)	16	0.2	0.3
	s.6(2) & s.6(2)	14	0.2	0.2
	s.6(2) & s.7(2)	24	0.4	0.4
	s.7(2) & s.7(2)	2	<0.1	<0.1
	Sub total	1,687	24.8	26.6
3 CINs	s.5(1)(d)(i) & s.6(2) & s.7(2)	44	0.6	0.7
	s.5(1)(d)(i) & s.5(1)(d)(i) & s.6(2)	12	0.2	0.2
	s.5(1)(d)(i) & s.5(1)(d)(i) & s.5(1)(d)(i)	1	<0.1	<0.1
	s.5(1)(d)(i) & s.6(2) & s.6(2)	8	0.1	0.1
	s.5(1)(d)(i) & s.5(1)(d)(i) & s.7(2)	1	<0.1	<0.1
	Sub total	66	1.0	1.0
Total		6,348	93.5	100.0
2 separate days				
2 CINs	s.5(1)(d)(i) & s.5(1)(d)(i)	34	0.5	8.2
	s.5(1)(d)(i) & s.6(2)	81	1.2	19.6
	s.5(1)(d)(i) & s.7(2)	1	<0.1	0.2
	s.6(2) & s.6(2)	112	1.6	27.1
	s.6(2) & s.7(2)	7	0.1	1.7
	Sub total	235	3.5	56.8
3 CINs	s.5(1)(d)(i) & s.5(1)(d)(i) & s.6(2)	46	0.7	11.1
	s.5(1)(d)(i) & s.6(2) & s.6(2)	92	1.4	22.2
	s.5(1)(d)(i) & s.6(2) & s.7(2)	3	<0.1	0.7
	s.6(2) & s.6(2) & s.7(2)	1	<0.1	0.2
	Sub total	142	2.1	34.3
4 CINs	s.5(1)(d)(i) & s.5(1)(d)(i) & s.5(1)(d)(i) & s.6(2)	2	<0.1	0.5
	s.5(1)(d)(i) & s.5(1)(d)(i) & s.6(2) & s.6(2)	28	0.4	6.8
	s.5(1)(d)(i) & s.5(1)(d)(i) & s.6(2) & s.7(2)	2	<0.1	0.5
	s.5(1)(d)(i) & s.6(2) & s.6(2) & s.7(2)	3	<0.1	0.7
	Sub total	35	0.5	8.5
5 CINs	s.5(1)(d)(i) & s.5(1)(d)(i) & s.6(2) & s.6(2) & s.7(2)	1	<0.1	0.2
	s.5(1)(d)(i) & s.5(1)(d)(i) & s.5(1)(d)(i) & s.6(2) & s.6(2)	1	<0.1	0.2
	Sub total	2	<0.1	0.5
Total		414	6.1	100.0

Note: s.5(1)(d)(i) = possession of smoking implement
s.6(2) = possession of cannabis (up to 30 gms)
s.7(2) = cultivation of up to two plants (non hydroponically)
CIN scheme applicable from 22 March 2004.

Table A1-6 (continued)
Frequency of multiple CINs issued on separate days by offence, April 2004 - March 2007 - persons

		Total		Sub total
		n	%	%
3 separate days				
3 CINs	s.5(1)(d)(i) & s.5(1)(d)(i) & s.6(2)	3	<0.1	12.0
	s.5(1)(d)(i) & s.6(2) & s.6(2)	4	0.1	16.0
	s.6(2) & s.6(2) & s.6(2)	4	0.1	16.0
	Sub total	11	0.2	44.0
4 CINs	s.5(1)(d)(i) & s.5(1)(d)(i) & s.6(2) & s.6(2)	1	<0.1	4.0
	s.5(1)(d)(i) & s.6(2) & s.6(2) & s.6(2)	4	0.1	16.0
	Sub total	5	0.1	20.0
5 CINs	s.5(1)(d)(i) & s.5(1)(d)(i) & s.6(2) & s.6(2) & s.6(2)	6	0.1	24.0
	Sub total	6	0.1	24.0
6 CINs	s.5(1)(d)(i) & s.5(1)(d)(i) & s.5(1)(d)(i) & s.6(2) & s.6(2) & s.6(2)	2	<0.1	8.0
	s.5(1)(d)(i) & s.5(1)(d)(i) & s.5(1)(d)(i) & s.6(2) & s.6(2) & s.7(2)	1	<0.1	4.0
	Sub total	3	<0.1	12.0
Total		25	0.3	100.0
4 & 5 separate days				
4 separate days				
4 CINs	s.5(1)(d)(i) & s.5(1)(d)(i) & s.6(2) & s.6(2)	1	<0.1	
5 CINs	s.5(1)(d)(i) & s.5(1)(d)(i) & s.5(1)(d)(i) & s.6(2) & s.6(2)	1	<0.1	
	Sub total	2	<0.1	
5 separate days				
5 CINs	s.5(1)(d)(i) & s.5(1)(d)(i) & s.5(1)(d)(i) & s.6(2) & s.6(2)	1	<0.1	
	Sub total	1	<0.1	
Total		3	<0.1	
Grand total		6,790	100.0	

Note: s.5(1)(d)(i) = possession of smoking implement
s.6(2) = possession of cannabis (up to 30 gms)
s.7(2) = cultivation of up to two plants (non hydroponically)
CIN scheme applicable from 22 March 2004.

Table A1-7
Number of CINs issued by time, offence & sex, April 2004 - March 2007

	s. 5(1)(d)(i) (Possession of smoking implement)			s. 6(2) (Possession of cannabis)			s. 7(2) (Cultivation of cannabis)		
	Males	Females	All	Males	Females	All	Males	Females	All
12.00 am	162	15	177	321	32	353	-	1	1
1.00 am	128	11	139	244	32	276	1	1	2
2.00 am	75	13	88	159	28	187	-	1	1
3.00 am	35	9	44	101	22	123	1	1	2
4.00 am	26	3	29	56	9	65	2	-	2
5.00 am	17	3	20	22	5	27	3	-	3
6.00 am	32	10	42	41	15	56	4	1	5
7.00 am	58	34	92	54	41	95	6	1	7
8.00 am	102	51	153	127	61	188	9	4	13
9.00 am	145	78	223	164	85	249	20	8	28
10.00 am	137	71	208	205	83	288	21	11	32
11.00 am	144	50	194	197	65	262	17	7	24
12.00 pm	110	36	146	180	62	242	12	12	24
1.00 pm	132	31	163	201	56	257	9	8	17
2.00 pm	149	46	195	233	98	331	14	6	20
3.00 pm	129	45	174	218	62	280	6	2	8
4.00 pm	120	40	160	195	49	244	9	6	15
5.00 pm	133	31	164	215	48	263	8	4	12
6.00 pm	115	33	148	195	33	228	5	5	10
7.00 pm	115	18	133	217	28	245	6	1	7
8.00 pm	126	16	142	264	37	301	6	1	7
9.00 pm	155	20	175	324	48	372	5	2	7
10.00 pm	182	27	209	328	41	369	5	2	7
11.00 pm	173	17	190	326	38	364	-	1	1
Total	2,700	708	3,408	4,587	1,078	5,665	169	86	255

Note: CIN scheme applicable from 22 March 2004.

Table A1-8
Number of CINs issued by time & sex, all offences
April 2004 - March 2007

	Males		Females		Total	
	n	%	n	%	n	%
12.00 am	483	6.5	48	2.6	531	5.7
1.00 am	373	5.0	44	2.4	417	4.5
2.00 am	234	3.1	42	2.2	276	3.0
3.00 am	137	1.8	32	1.7	169	1.8
4.00 am	84	1.1	12	0.6	96	1.0
5.00 am	42	0.6	8	0.4	50	0.5
6.00 am	77	1.0	26	1.4	103	1.1
7.00 am	118	1.6	76	4.1	194	2.1
8.00 am	238	3.2	116	6.2	354	3.8
9.00 am	329	4.4	171	9.1	500	5.4
10.00 am	363	4.9	165	8.8	528	5.7
11.00 am	358	4.8	122	6.5	480	5.1
12.00 pm	302	4.1	110	5.9	412	4.4
1.00 pm	342	4.6	95	5.1	437	4.7
2.00 pm	396	5.3	150	8.0	546	5.9
3.00 pm	353	4.7	109	5.8	462	5.0
4.00 pm	324	4.3	95	5.1	419	4.5
5.00 pm	356	4.8	83	4.4	439	4.7
6.00 pm	315	4.2	71	3.8	386	4.1
7.00 pm	338	4.5	47	2.5	385	4.1
8.00 pm	396	5.3	54	2.9	450	4.8
9.00 pm	484	6.5	70	3.7	554	5.9
10.00 pm	515	6.9	70	3.7	585	6.3
11.00 pm	499	6.7	56	3.0	555	5.9
Total	7,456	100.0	1,872	100.0	9,328	100.0

Note: CIN scheme applicable from 22 March 2004.

Table A1-9
Number of CINs issued by day, status & offence, April 2004 - March 2007

	Monday	Tuesday	Wednesday	Thursday	Friday	Saturday	Sunday	Total
s 5(1)(d)(i)								
CES Completed	65	58	73	89	83	58	60	486
Court	2	5	2	3	1	3	2	18
FER Registered	243	260	329	354	343	201	158	1,888
Final Demand	7	10	16	9	9	3	6	60
Paid	110	117	147	142	180	141	101	938
Unpaid	1	4	1	3	3	4	2	18
Total	428	454	568	600	619	410	329	3,408
Unexpiated %	59.1%	61.5%	61.3%	61.5%	57.5%	51.5%	51.1%	58.2%
Expiated %	40.9%	38.5%	38.7%	38.5%	42.5%	48.5%	48.9%	41.8%
s 6(2)								
CES Completed	87	92	104	122	126	90	79	700
Court	5	5	3	4	2	1	1	21
FER Registered	349	369	502	544	575	402	331	3,072
Final Demand	13	10	16	17	21	9	13	99
Paid	182	203	238	259	332	302	233	1,749
Unpaid		2	2	8	8	3	1	24
Total	636	681	865	954	1,064	807	658	5,665
Unexpiated %	57.7%	56.7%	60.5%	60.1%	57.0%	51.4%	52.6%	56.8%
Expiated %	42.3%	43.3%	39.5%	39.9%	43.0%	48.6%	47.4%	43.2%
s 7(2)								
CES Completed	12	9	10	11	13	6	3	64
Court		1					1	2
FER Registered	21	22	16	28	19	10	9	125
Final demand	2	1	1		2	2	1	9
Paid	7	10	10	10	8	6	3	54
Unpaid					1			1
Total	42	43	37	49	43	24	17	255
Unexpiated %	54.8%	55.8%	45.9%	57.1%	51.2%	50.0%	64.7%	53.7%
Expiated %	45.2%	44.2%	54.1%	42.9%	48.8%	50.0%	35.3%	46.3%
All offences								
CES Completed	164	159	187	222	222	154	142	1,250
Court	7	11	5	7	3	4	4	41
FER Registered	613	651	847	926	937	613	498	5,085
Final demand	22	21	33	26	32	14	20	168
Paid	299	330	395	411	520	449	337	2,741
Unpaid	1	6	3	11	12	7	3	43
Total	1,106	1,178	1,470	1,603	1,726	1,241	1,004	9,328
Unexpiated %	58.1%	58.5%	60.4%	60.5%	57.0%	51.4%	52.3%	57.2%
Expiated %	41.9%	41.5%	39.6%	39.5%	43.0%	48.6%	47.7%	42.8%

Table A1-10
Number of CINs issued by day, time & offence, April 2004 - March 2007

	Monday	Tuesday	Wednesday	Thursday	Friday	Saturday	Sunday	Total
s 5(1)(d)(i)								
12 am - 5.59 am	58	40	59	65	76	115	84	497
6 am - 11.59 am	95	169	169	176	181	67	55	912
12 pm - 5.59 pm	148	133	181	196	132	103	109	1,002
6 pm - 11.59	127	112	159	163	230	125	81	997
Total	428	454	568	600	619	410	329	3,408
12 am - 5.59 am	13.6%	8.8%	10.4%	10.8%	12.3%	28.0%	25.5%	14.6%
6 am - 11.59 am	22.2%	37.2%	29.8%	29.3%	29.2%	16.3%	16.7%	26.8%
12 pm - 5.59 pm	34.6%	29.3%	31.9%	32.7%	21.3%	25.1%	33.1%	29.4%
6 pm - 11.59	29.7%	24.7%	28.0%	27.2%	37.2%	30.5%	24.6%	29.3%
Total	100.0%	100.0%	100.0%	100.0%	100.0%	100.0%	100.0%	100.0%
s 6(2)								
12 am - 5.59 am	98	76	120	138	154	253	192	1,031
6 am - 11.59 am	111	161	219	221	224	102	100	1,138
12 pm - 5.59 pm	225	221	260	273	262	188	188	1,617
6 pm - 11.59	202	223	266	322	424	264	178	1,879
Total	636	681	865	954	1,064	807	658	5,665
12 am - 5.59 am	15.4%	11.2%	13.9%	14.5%	14.5%	31.4%	29.2%	18.2%
6 am - 11.59 am	17.5%	23.6%	25.3%	23.2%	21.1%	12.6%	15.2%	20.1%
12 pm - 5.59 pm	35.4%	32.5%	30.1%	28.6%	24.6%	23.3%	28.6%	28.5%
6 pm - 11.59	31.8%	32.7%	30.8%	33.8%	39.8%	32.7%	27.1%	33.2%
Total	100.0%	100.0%	100.0%	100.0%	100.0%	100.0%	100.0%	100.0%
s 7(2)								
12 am - 5.59 am	3	1	1	-	1	3	2	11
6 am - 11.59 am	18	20	15	16	24	10	6	109
12 pm - 5.59 pm	17	13	15	23	14	9	5	96
6 pm - 11.59	4	9	6	10	4	2	4	39
Total	42	43	37	49	43	24	17	255
12 am - 5.59 am	7.1%	2.3%	2.7%		2.3%	12.5%	11.8%	4.3%
6 am - 11.59 am	42.9%	46.5%	40.5%	32.7%	55.8%	41.7%	35.3%	42.7%
12 pm - 5.59 pm	40.5%	30.2%	40.5%	46.9%	32.6%	37.5%	29.4%	37.6%
6 pm - 11.59	9.5%	20.9%	16.2%	20.4%	9.3%	8.3%	23.5%	15.3%
Total	100.0%	100.0%	100.0%	100.0%	100.0%	100.0%	100.0%	100.0%
All offences								
12 am - 5.59 am	159	117	180	203	231	371	278	1,539
6 am - 11.59 am	224	350	403	413	429	179	161	2,159
12 pm - 5.59 pm	390	367	456	492	408	300	302	2,715
6 pm - 11.59	333	344	431	495	658	391	263	2,915
Total	1,106	1,178	1,470	1,603	1,726	1,241	1,004	9,328
12 am - 5.59 am	14.4%	9.9%	12.2%	12.7%	13.4%	29.9%	27.7%	16.5%
6 am - 11.59 am	20.3%	29.7%	27.4%	25.8%	24.9%	14.4%	16.0%	23.1%
12 pm - 5.59 pm	35.3%	31.2%	31.0%	30.7%	23.6%	24.2%	30.1%	29.1%
6 pm - 11.59	30.1%	29.2%	29.3%	30.9%	38.1%	31.5%	26.2%	31.3%
Total	100.0%	100.0%	100.0%	100.0%	100.0%	100.0%	100.0%	100.0%

Table A1-11
Number of CINs issued by day of week & time - Indigenous persons, April 2004 - March 2007

	Monday	Tuesday	Wednesday	Thursday	Friday	Saturday	Sunday	Total
(number)								
12 am - 5.59 am	10	10	14	19	25	19	18	115
6 am - 11.59 am	24	43	58	59	46	21	13	264
12 pm - 5.59 pm	32	37	57	66	61	36	21	310
6 pm - 11.59	31	29	37	30	49	33	15	224
Total	97	119	166	174	181	109	67	913
(per cent column)								
12 am - 5.59 am	10.3%	8.4%	8.4%	10.9%	13.8%	17.4%	26.9%	12.6%
6 am - 11.59 am	24.7%	36.1%	34.9%	33.9%	25.4%	19.3%	19.4%	28.9%
12 pm - 5.59 pm	33.0%	31.1%	34.3%	37.9%	33.7%	33.0%	31.3%	34.0%
6 pm - 11.59	32.0%	24.4%	22.3%	17.2%	27.1%	30.3%	22.4%	24.5%
Total	100.0%	100.0%	100.0%	100.0%	100.0%	100.0%	100.0%	100.0%

Figure A1-2
Number of CINs issued by day & time - Indigenous persons, April 2004 - March 2007

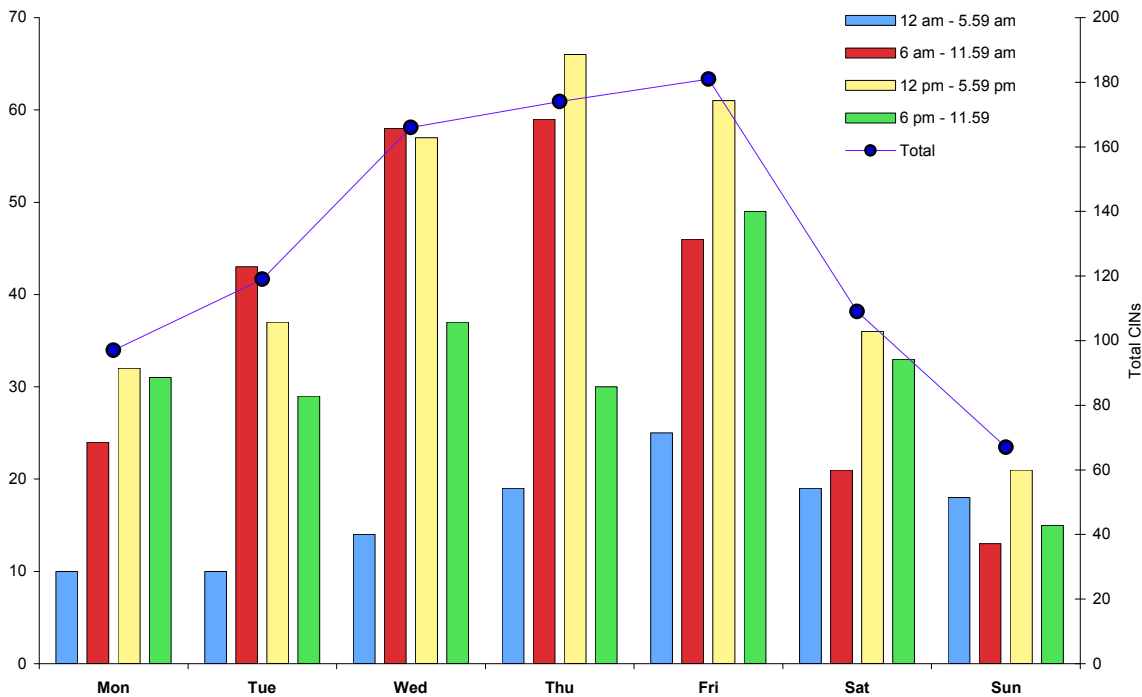


Figure A1-3
Number of CINs issued by day & time - s 5(1)(d)(i) offences
April 2004 - March 2007

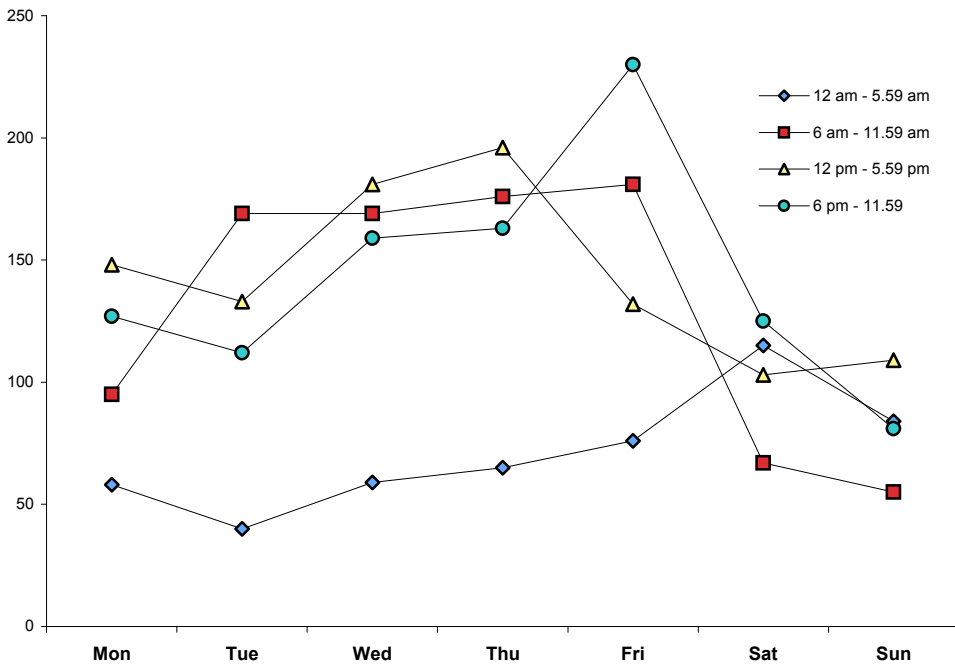


Figure A1-4
Proportion (%) of CINs issued by day & time - s 5(1)(d)(i) offences
April 2004 - March 2007

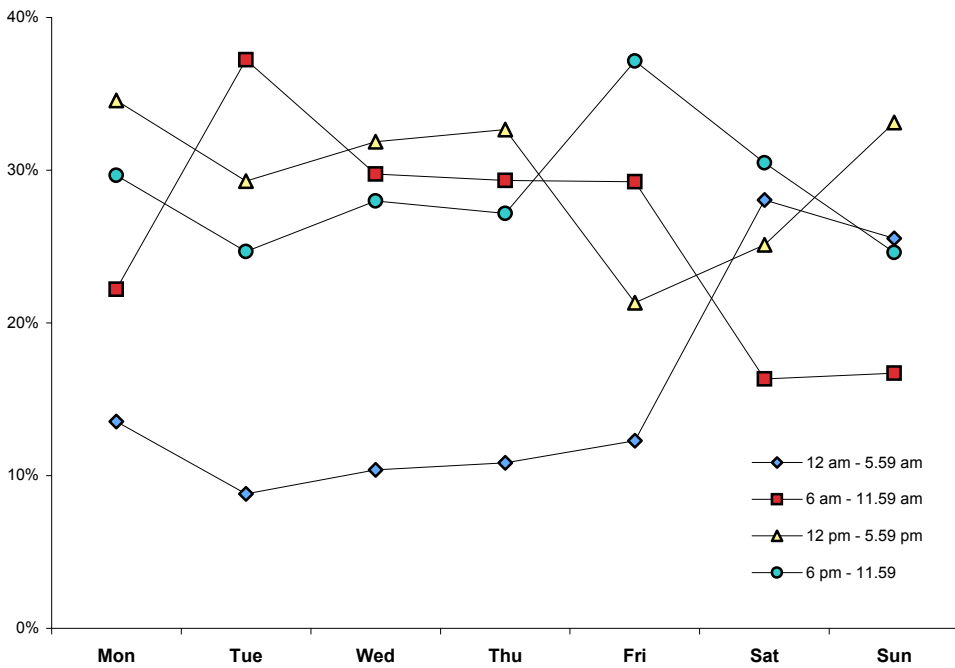


Figure A1-5
Number of CINs issued by day & time - s 6(2) offences
April 2004 - March 2007

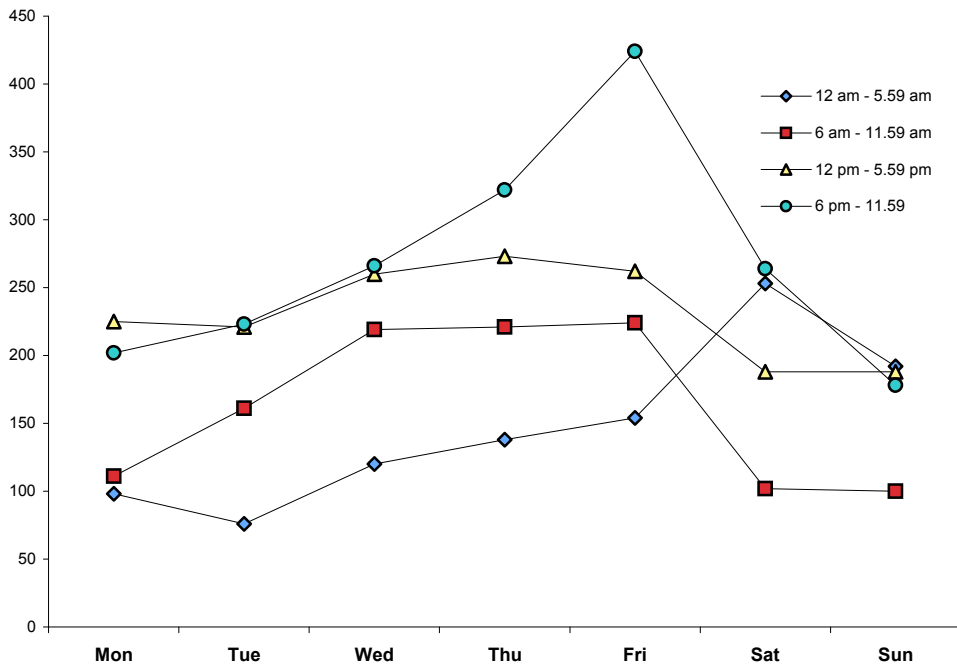


Figure A1-6
Proportion (%) of CINs issued by day & time - s 6(2) offences
April 2004 - March 2007

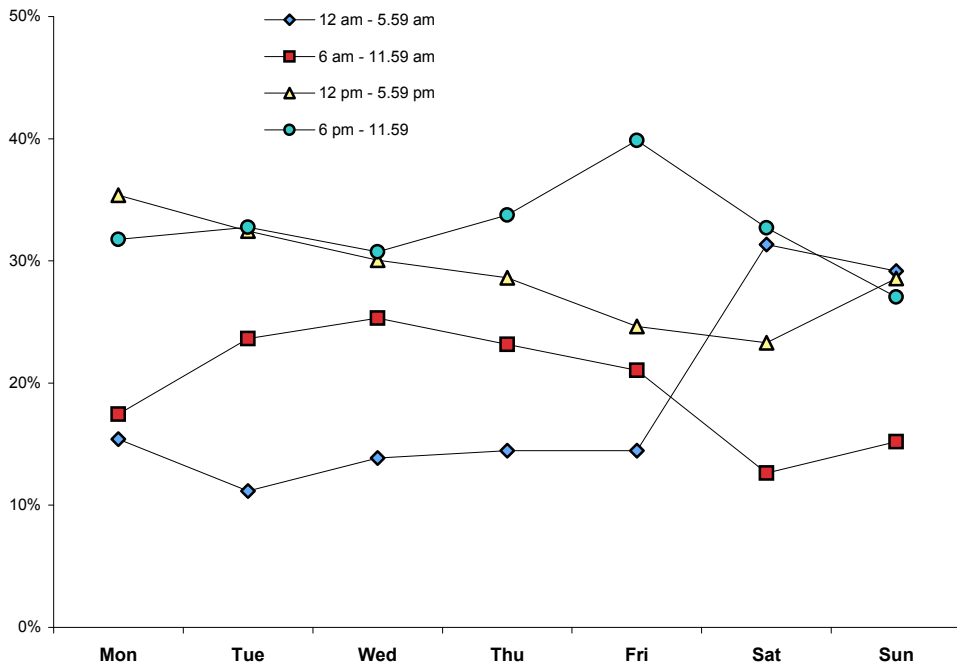


Figure A1-7
Proportion (%) of all CINs issued by time & sex
s. 5(1)(d)(i) offences, April 2004 - March 2007

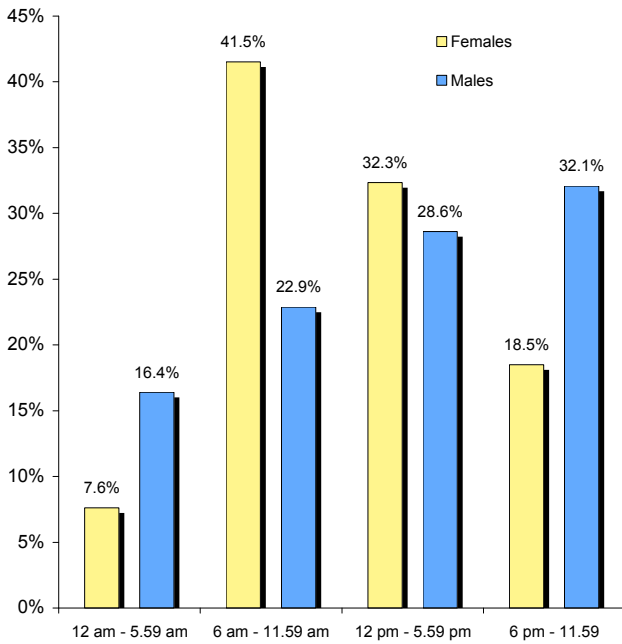
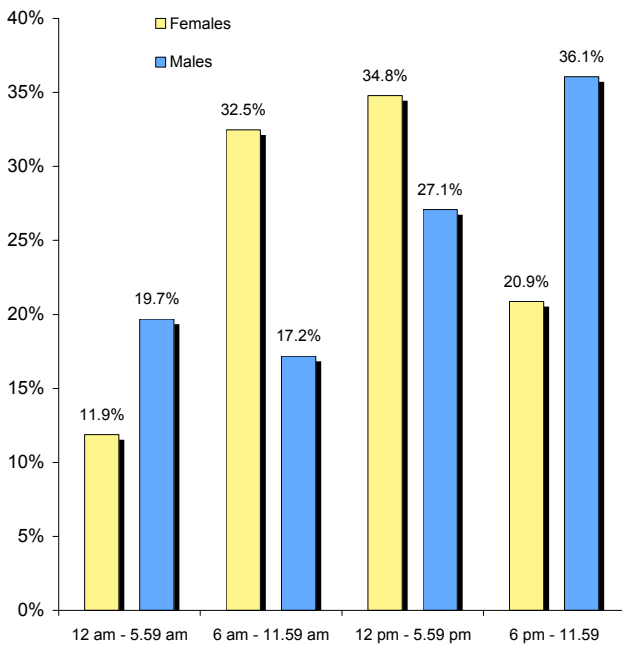


Figure A1-8
Proportion (%) of all CINs issued by time & sex
s. 6(2) offences, April 2004 - March 2007



Part 2: Help Seeking Data Tables & Figures

Table A2-1
Episodes for all types of treatment by agency: principal problem - cannabis
April 2004 - March 2007

	Apr 04 - Jun 04	2004/2005	2005/2006	Jul 06 - Mar 07	Total
Regional services					
Goldfields CDST (Centrecare)	15	61	66	36	178
Great Southern CDST (Palmerston Assoc)	22	108	107	44	281
Kimberley CDST (North West Mental Health Service)	12	54	49	25	140
Midwest CDST (Geraldton Health Service)	37	159	103	31	330
North East Metro CDST (Holyoake Institute)	45	143	108	50	346
North Metro CDST (St John of God Health Care)	68	265	210	60	603
Perth Metro CDST (WA Council on Addictions)	31	55	32	33	151
Pilbara CDST (East Pilbara Health Service)	7	46	55	19	127
South East Metro CDST (Mission Australia)	44	148	132	69	393
South Metro CDST (Palmerston Assoc)	96	465	436	112	1,109
South West CDST (St John of God Health Care)	43	201	190	87	521
Wheatbelt CDST (Holyoake)	7	42	87	30	166
Rosella House (Drug Arm)	-	3	5	1	9
Whole metropolitan services					
Aboriginal Alcohol & Drug Service	16	57	64	16	153
Bridge Program & Harry Hunter (Salvation Army)	6	71	87	39	203
Cyrenian House (WA Council on Addictions)	17	90	94	34	235
DAWN Program (St John of God Health Care)	15	56	50	29	150
Hearth Program (Wesley Mission)	2	8	10	3	23
Holyoake Institute	37	174	187	109	507
Next Step Specialist Drug & Alcohol Services					
Eastern DAC	11	115	101	60	287
Northern DAC	23	75	53	36	187
Rockingham DAC	-	1	2	19	22
Southern DAC	6	38	37	25	106
DAO diversion (IDP, POP, YPOP)	-	1	209	161	371
Naltrexone Clinic	1	8	17	6	32
Youth Clinic	17	83	95	48	243
Sub total	58	321	514	355	1,248
Outcare	-	1	-	10	11
Palmerston Centre	27	107	103	50	287
Perth Women's Centre (Women's Health Care Assoc)	7	42	38	16	103
Serenity Lodge	8	32	31	14	85
Yirra (Mission Australia)	25	164	132	44	365
Total episodes cannabis	645	2,873	2,890	1,316	7,724
Total episodes all drugs	4,213	17,484	17,841	13,113	52,651
% episodes cannabis	15.3	16.4	16.2	10.0	14.7

Source: Drug and Alcohol Office.

Note: Aboriginal Alcohol & Drug Service formerly known as Noongar Alcohol & Substance Abuse Services (NASAS).
Perth Women's Centre includes Pregnancy Early Parenting & Illicit Substance Use Program (PEPISU).
Next Step includes Eastern DAC, Northern DAC, Southern DAC, Rockingham DAC, Youth Clinic and Naltrexone Clinic.
March 2007 data provisional due to delays in cleaning and processing of data.

Table A2-2
Cannabis related treatment episodes by Health Region & source of referral, 2006

	Drug treatment service		Justice		Diversion		Family		Self		Health/medical		Other		Total
	n	%	n	%	n	%	n	%	n	%	n	%	n	%	
Metropolitan area															
East Metro	39	5.7	128	18.8	202	29.7	51	7.5	150	22.1	71	10.4	39	5.7	680
North Metro	27	4.9	85	15.5	163	29.7	61	11.1	123	22.4	63	11.5	26	4.7	548
South Metro	33	4.2	225	28.9	230	29.5	57	7.3	152	19.5	54	6.9	28	3.6	779
Sub total	99	4.9	438	21.8	595	29.6	169	8.4	425	21.2	188	9.4	93	4.6	2,007
Country															
Goldfields & SE Coastal	-		30	34.9	18	20.9	4	4.7	17	19.8	10	11.6	7	8.1	86
Great Southern	-		36	34.0	35	33.0	1	0.9	20	18.9	12	11.3	2	1.9	106
Kimberley	1	1.8	14	25.0	9	16.1	-		9	16.1	18	32.1	5	8.9	56
Midwest & Murchison	3	3.4	46	52.9	10	11.5	3	3.4	11	12.6	11	12.6	3	3.4	87
Pilbara & Gascoyne	1	1.8	25	43.9	2	3.5	6	10.5	11	19.3	11	19.3	1	1.8	57
South West	7	3.6	49	25.4	38	19.7	9	4.7	31	16.1	41	21.2	18	9.3	193
Wheatbelt	-		22	21.0	50	47.6	5	4.8	14	13.3	10	9.5	4	3.8	105
Sub total	12	1.7	222	32.2	162	23.5	28	4.1	113	16.4	113	16.4	40	5.8	690
Interstate/unknown	1	6.7	-		4	26.7	1	6.7	7	46.7	2	13.3	-		15
Total	112	4.1	660	24.3	761	28.1	198	7.3	545	20.1	303	11.2	133	4.9	2,712

Source: Drug and Alcohol Office.

Note: Includes all ages and principal problem was cannabis.

Table A2-3
Cannabis related treatment episodes by Health Region & type of treatment, 2006

	Assessment	Counselling	Information & education	Pharmacotherapy	Rehabilitation	Support & case management	Detoxification	Other	Total
Metropolitan area									
East Metro	63	348	86	2	123	13	33	12	680
North Metro	68	255	79	-	97	19	27	3	548
South Metro	68	462	130	10	79	4	19	7	779
Sub total	199	1,065	295	12	299	36	79	22	2,007
Country									
Goldfields & SE Coastal	5	75	5	-	-	-	1	-	86
Great Southern	-	96	7	-	1	-	-	2	106
Kimberley	3	47	2	1	2	1	-	-	56
Midwest & Murchison	2	71	7	-	4	1	2	-	87
Pilbara & Gascoyne	2	49	1	-	2	1	1	1	57
South West	14	132	29	-	5	1	12	-	193
Wheatbelt	22	72	10	-	1	-	-	-	105
Sub total	48	542	61	1	15	4	16	3	690
Interstate/unknown	4	5	2	-	-	-	2	2	15
Total	251	1,612	358	13	314	40	97	27	2,712

Self Reported Health Conditions, 2004 (persons aged 14+ years)

Table A2-4
Proportion (%) of self reported health conditions by selected drug use status, Australia, 2004

Respondents could select more than one condition in response to the question "In the last 12 months have you been diagnosed or treated for ..."

	Diabetes	Heart diseases	Asthma	Cancer	Mental illness
Tobacco smoking status					
Daily	3.4	10.8	9.4	2.0	15.3
Other recent smoker	2.5	9.0	7.2	1.0	7.6
Non smoker	4.4	17.4	7.5	2.5	7.8
Risk of short term alcohol related harm					
Abstainer	7.2	20.8	8.1	3.0	8.9
Low risk	4.3	17.2	7.5	2.5	8.7
Risky	2.0	9.8	7.6	1.9	10.0
High risk	1.3	7.2	9.3	1.2	11.1
Cannabis					
Used in last month	0.9	4.0	10.1	1.0	16.5
Not used in last month	4.4	16.8	7.6	2.5	8.6
Inhalants					
Used in last month	2.1	8.9	15.9	7.5	22.1
Not used in last month	4.2	15.9	7.8	2.4	9.1
Heroin					
Used in last month	-	2.8	16.2	-	50.3
Not used in last month	4.2	15.9	7.8	2.4	9.1
Meth/amphetamines					
Used in last month	1.2	4.0	13.9	1.9	19.8
Not used in last month	4.2	16.1	7.7	2.4	9.0
Cocaine					
Used in last month	1.2	1.5	8.4	-	13.1
Not used in last month	4.2	15.9	7.8	2.4	9.1
Ecstasy					
Used in last month	0.7	0.8	11.8	0.3	16.0
Not used in last month	4.2	16.1	7.7	2.4	9.0
Any illicit drug					
Used in last month	2.0	7.4	9.7	1.5	16.6
Not used in last month	4.3	16.5	7.6	2.5	8.3
All persons (aged 14 years+)	4.2	16.0	7.8	2.4	9.1

Source: 2004 National Drug Strategy Household Survey: Detailed findings. AIHW Cat. No. PHE 68. Canberra, Australian Institute of Health & Welfare 2005 (Table 20.2).

Note: Shading indicates relative standard error greater than 50%.

- zero or rounded as zero.

Mental illness included depression, anxiety disorder, schizophrenia, bipolar disorder and eating disorder or other form of psychosis.

Drug Related Outpatient Mental Disorders, 2000 - 2006

Table A-2-5
Annual drug related outpatient treatment episodes by drug group & sex, 2000 - 2006

	Cannabis	Opioids	Sedatives/ hypnotics	Stimulants	Multiple drugs	Other drugs	All drugs
Males							
2000 (July-Dec)	146	23	5	72	477	16	739
2001	361	75	7	227	1,063	35	1,768
2002	414	78	31	315	1,298	38	2,174
2003	480	93	28	348	1,252	45	2,246
2004	507	109	22	369	1,188	48	2,243
2005	526	116	24	397	1,343	44	2,450
2006	635	137	50	526	1,367	67	2,782
Females							
2000 (July-Dec)	50	14	4	47	130	2	247
2001	101	55	22	166	308	12	664
2002	137	77	34	168	346	5	767
2003	104	55	46	217	439	3	864
2004	108	70	47	286	498	12	1,021
2005	201	65	43	235	505	5	1,054
2006	169	77	55	244	584	3	1,132
Persons							
2000 (July-Dec)	196	37	9	119	607	18	986
2001	462	130	29	393	1,371	47	2,432
2002	551	155	65	483	1,644	43	2,941
2003	584	148	74	565	1,691	48	3,110
2004	615	179	69	655	1,686	60	3,264
2005	727	181	67	632	1,848	49	3,504
2006	804	214	105	770	1,951	70	3,914
(per cent row)							
Males							
2000 (July-Dec)	19.8	3.1	0.7	9.7	64.5	2.2	100.0
2001	20.4	4.2	0.4	12.8	60.1	2.0	100.0
2002	19.0	3.6	1.4	14.5	59.7	1.7	100.0
2003	21.4	4.1	1.2	15.5	55.7	2.0	100.0
2004	22.6	4.9	1.0	16.5	53.0	2.1	100.0
2005	21.5	4.7	1.0	16.2	54.8	1.8	100.0
2006	22.8	4.9	1.8	18.9	49.1	2.4	100.0
Females							
2000 (July-Dec)	20.2	5.7	1.6	19.0	52.6	0.8	100.0
2001	15.2	8.3	3.3	25.0	46.4	1.8	100.0
2002	17.9	10.0	4.4	21.9	45.1	0.7	100.0
2003	12.0	6.4	5.3	25.1	50.8	0.3	100.0
2004	10.6	6.9	4.6	28.0	48.8	1.2	100.0
2005	19.1	6.2	4.1	22.3	47.9	0.5	100.0
2006	14.9	6.8	4.9	21.6	51.6	0.3	100.0

Source: Mental Health Information System, Department of Health.

Note: Other drugs includes cocaine and hallucinogens.

Table A2-6
Quarterly cannabis related psychiatric outpatient treatment episodes by
sub diagnostic group, September quarter 2000 - December quarter 2006

	Acute intoxication (F12.0)	Harmful use (F12.1)	Dependent syndrome (F12.2)	Psychotic disorder (F12.5)	Other diagnoses (F12.3-F12.4, F12.6-F12.9)	Total
2000						
Qtr 3	11	12	8	54	13	98
Qtr 4	16	11	10	50	11	98
Total	27	23	18	104	24	196
2001						
Qtr 1	6	15	13	45	18	97
Qtr 2	11	19	10	66	11	117
Qtr 3	13	21	16	58	12	120
Qtr 4	16	16	13	73	10	128
Total	46	71	52	242	51	462
2002						
Qtr 1	17	24	21	60	20	142
Qtr 2	19	17	17	56	16	125
Qtr 3	15	17	15	68	25	140
Qtr 4	17	14	15	83	15	144
Total	68	72	68	267	76	551
2003						
Qtr 1	15	17	13	71	19	135
Qtr 2	14	11	13	75	20	133
Qtr 3	14	13	13	90	10	140
Qtr 4	13	23	17	99	24	176
Total	56	64	56	335	73	584
2004						
Qtr 1	18	20	13	96	16	163
Qtr 2	16	18	11	84	14	143
Qtr 3	26	18	14	79	15	152
Qtr 4	19	16	11	98	13	157
Total	79	72	49	357	58	615
2005						
Qtr 1	29	21	6	109	17	182
Qtr 2	30	39	11	86	21	187
Qtr 3	37	25	7	96	14	179
Qtr 4	27	22	8	100	22	179
Total	123	107	32	391	74	727
2006						
Qtr 1	31	37	21	109	16	214
Qtr 2	26	26	11	109	18	190
Qtr 3	24	29	23	116	16	208
Qtr 4	25	31	22	87	27	192
Total	106	123	77	421	77	804

Source: Mental Health Information System, Department of Health.

Table A2-7
Quarterly cannabis related outpatient treatment episodes by age group, September quarter 2000 - December quarter 2006: males

	<15	15-24	25-34	35-44	45+	Total
2000						
Qtr 3	-	45	20	6	-	71
Qtr 4	-	40	24	10	1	75
Total	-	85	44	16	1	146
2001						
Qtr 1	-	30	30	10	1	71
Qtr 2	5	43	31	13	1	93
Qtr 3	4	40	31	12	6	93
Qtr 4	5	50	36	9	4	104
Total	14	163	128	44	12	361
2002						
Qtr 1	6	58	36	9	3	112
Qtr 2	7	52	22	8	2	91
Qtr 3	4	61	30	4	2	101
Qtr 4	6	69	28	7	-	110
Total	23	240	116	28	7	414
2003						
Qtr 1	6	57	43	4	-	110
Qtr 2	5	61	39	1	2	108
Qtr 3	-	63	41	12	2	118
Qtr 4	2	78	45	15	4	144
Total	13	259	168	32	8	480
2004						
Qtr 1	-	79	48	11	2	140
Qtr 2	3	55	53	11	2	124
Qtr 3	-	62	48	8	3	121
Qtr 4	-	60	51	8	3	122
Total	3	256	200	38	10	507
2005						
Qtr 1	1	65	44	12	3	125
Qtr 2	2	65	48	10	5	130
Qtr 3	-	52	61	12	6	131
Qtr 4	4	63	53	16	4	140
Total	7	245	206	50	18	526
2006						
Qtr 1	-	78	60	19	5	162
Qtr 2	-	64	64	16	5	149
Qtr 3	-	82	71	13	4	170
Qtr 4	-	77	58	16	3	154
Total	-	301	253	64	17	635

Source: Mental Health Information System, Department of Health.

Table A2-8
Quarterly cannabis related outpatient treatment episodes by age group, September quarter 2000 - December quarter 2006: females

	<15	15-24	25-34	35-44	45+	Total
2000						
Qtr 3	-	12	11	4	-	27
Qtr 4	-	14	4	4	1	23
Total	-	26	15	8	1	50
2001						
Qtr 1	-	13	10	3	-	26
Qtr 2	-	8	12	4	-	24
Qtr 3	-	4	11	9	3	27
Qtr 4	-	6	9	8	1	24
Total	-	31	42	24	4	101
2002						
Qtr 1	-	5	18	7	-	30
Qtr 2	-	9	20	4	1	34
Qtr 3	-	17	13	9	-	39
Qtr 4	-	18	12	3	1	34
Total	-	49	63	23	2	137
2003						
Qtr 1	-	13	3	9	-	25
Qtr 2	-	15	3	7	-	25
Qtr 3	1	9	3	9	-	22
Qtr 4	2	12	5	9	4	32
Total	3	49	14	34	4	104
2004						
Qtr 1	3	7	4	9	-	23
Qtr 2	1	6	5	7	-	19
Qtr 3	-	11	4	14	2	31
Qtr 4	-	13	5	17	-	35
Total	4	37	18	47	2	108
2005						
Qtr 1	3	26	9	17	2	57
Qtr 2	4	21	13	19	-	57
Qtr 3	-	21	11	16	-	48
Qtr 4	-	19	8	12	-	39
Total	7	87	41	64	2	201
2006						
Qtr 1	-	20	20	11	1	52
Qtr 2	-	16	18	6	1	41
Qtr 3	1	16	16	4	1	38
Qtr 4	1	14	14	7	2	38
Total	2	66	68	28	5	169

Source: Mental Health Information System, Department of Health.

Table A2-9
Quarterly cannabis related outpatient treatment
episodes by age group, September quarter
2000 - December quarter 2006: persons

	<15	15-24	25-34	35-44	45+	Total
2000						
Qtr 3	-	57	31	10	-	98
Qtr 4	-	54	28	14	2	98
Total	-	111	59	24	2	196
2001						
Qtr 1	-	43	40	13	1	97
Qtr 2	5	51	43	17	1	117
Qtr 3	4	44	42	21	9	120
Qtr 4	5	56	45	17	5	128
Total	14	194	170	68	16	462
2002						
Qtr 1	6	63	54	16	3	142
Qtr 2	7	61	42	12	3	125
Qtr 3	4	78	43	13	2	140
Qtr 4	6	87	40	10	1	144
Total	23	289	179	51	9	551
2003						
Qtr 1	6	70	46	13	-	135
Qtr 2	5	76	42	8	2	133
Qtr 3	1	72	44	21	2	140
Qtr 4	4	90	50	24	8	176
Total	16	308	182	66	12	584
2004						
Qtr 1	3	86	52	20	2	163
Qtr 2	4	61	58	18	2	143
Qtr 3	-	73	52	22	5	152
Qtr 4	-	73	56	25	3	157
Total	7	293	218	85	12	615
2005						
Qtr 1	4	91	53	29	5	182
Qtr 2	6	86	61	29	5	187
Qtr 3	-	73	72	28	6	179
Qtr 4	4	82	61	28	4	179
Total	14	332	247	114	20	727
2006						
Qtr 1	-	98	80	30	6	214
Qtr 2	-	80	82	22	6	190
Qtr 3	1	98	87	17	5	208
Qtr 4	1	91	72	23	5	192
Total	2	367	321	92	22	804

Source: Mental Health Information System, Department of Health.

Figure A2-1
Quarterly cannabis related outpatient treatment episodes by sex
September quarter 2000 - December quarter 2006

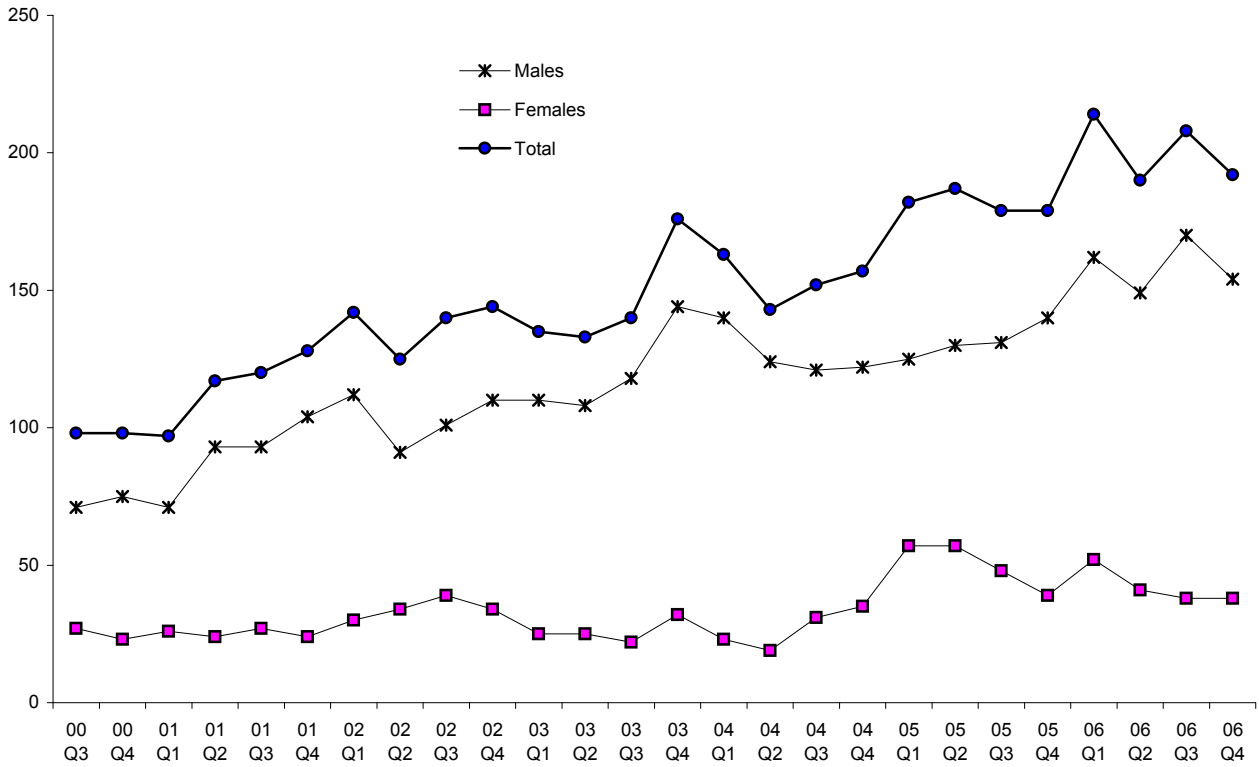


Figure A2-2
Quarterly cannabis related outpatient treatment episodes by age group
September quarter 2000 - December quarter 2006

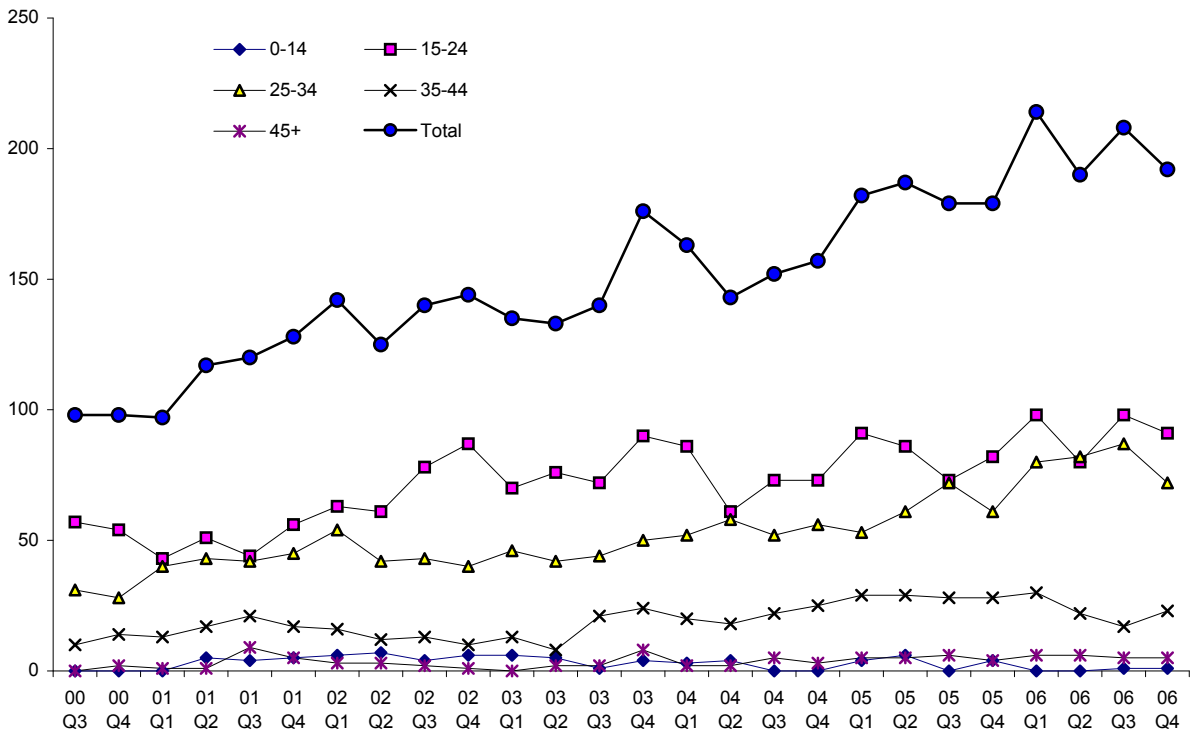
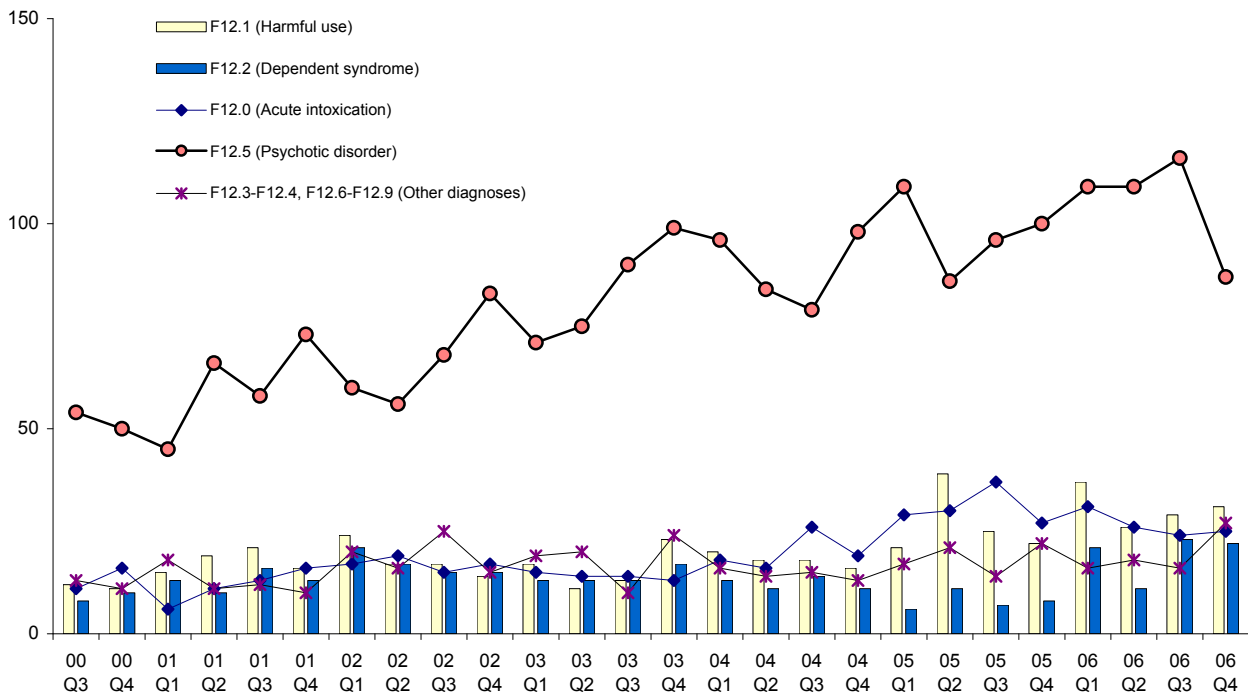


Figure A2-3
Quarterly cannabis related outpatient treatment episodes by sub diagnostic group
September quarter 2000 - December quarter 2006



Drug Related Inpatient Mental Disorders, 2000 - 2006

Table A2-10
Annual drug related inpatient treatment episodes by drug group & sex, 2000 - 2006

	Cannabis	Opioids	Sedatives/ hypnotics	Stimu- lants	Multiple drugs	Other drugs	All drugs
Males							
2000 (July-Dec)	55	155	9	135	123	4	481
2001	117	142	33	287	293	6	878
2002	151	105	30	227	275	6	794
2003	124	94	17	282	234	7	758
2004	136	106	30	279	207	11	769
2005	124	129	22	230	174	8	687
2006	130	87	20	257	233	4	731
Females							
2000 (July-Dec)	21	95	12	71	60	4	263
2001	37	107	29	162	98	2	435
2002	54	85	25	123	101	-	388
2003	46	82	33	146	103	2	412
2004	69	80	33	164	100	2	448
2005	69	91	25	138	109	3	435
2006	42	57	35	127	117	4	382
Persons							
2000 (July-Dec)	76	250	21	206	183	8	744
2001	154	249	62	449	391	8	1,313
2002	205	190	55	350	376	6	1,182
2003	170	176	50	428	337	9	1,170
2004	205	186	63	443	307	13	1,217
2005	193	220	47	368	283	11	1,122
2006	172	144	55	384	350	8	1,113
(per cent row)							
Males							
2000 (July-Dec)	11.4	32.2	1.9	28.1	25.6	0.8	100.0
2001	13.3	16.2	3.8	32.7	33.4	0.7	100.0
2002	19.0	13.2	3.8	28.6	34.6	0.8	100.0
2003	16.4	12.4	2.2	37.2	30.9	0.9	100.0
2004	17.7	13.8	3.9	36.3	26.9	1.4	100.0
2005	18.0	18.8	3.2	33.5	25.3	1.2	100.0
2006	17.8	11.9	2.7	35.2	31.9	0.5	100.0
Females							
2000 (July-Dec)	8.0	36.1	4.6	27.0	22.8	1.5	100.0
2001	8.5	24.6	6.7	37.2	22.5	0.5	100.0
2002	13.9	21.9	6.4	31.7	26.0		100.0
2003	11.2	19.9	8.0	35.4	25.0	0.5	100.0
2004	15.4	17.9	7.4	36.5	22.3	0.4	100.0
2005	15.9	20.9	5.7	31.7	25.1	0.7	100.0
2006	11.0	14.9	9.2	33.2	30.6	1.0	100.0

Source: Mental Health Information System, Department of Health.

Note: Other drugs includes cocaine and hallucinogens.

Table A2-11
Quarterly cannabis related psychiatric inpatient treatment episodes by
sub diagnostic group, September quarter 2000 - December quarter 2006

	Acute intoxication (F12.0)	Harmful use (F12.1)	Dependent syndrome (F12.2)	Psychotic disorder (F12.5)	Other diagnoses (F12.3-F12.4, F12.6-F12.9)	Total
2000						
Qtr 3	4	8	3	18	4	37
Qtr 4	2	4	4	26	6	42
Total	6	12	7	44	10	79
2001						
Qtr 1	5	8	1	17	2	33
Qtr 2	5	3	3	24	4	39
Qtr 3	4	7	6	35	2	54
Qtr 4	-	2	1	28	1	32
Total	14	20	11	104	9	158
2002						
Qtr 1	2	8	-	23	3	36
Qtr 2	4	5	6	44	4	63
Qtr 3	3	3	8	36	6	56
Qtr 4	10	6	3	33	4	56
Total	19	22	17	136	17	211
2003						
Qtr 1	1	2	5	17	2	27
Qtr 2	5	4	2	21	1	33
Qtr 3	8	6	7	32	3	56
Qtr 4	1	4	8	40	5	58
Total	15	16	22	110	11	174
2004						
Qtr 1	4	4	8	34	1	51
Qtr 2	2	3	5	25	1	36
Qtr 3	9	6	4	39	1	59
Qtr 4	1	7	7	37	8	60
Total	16	20	24	135	11	206
2005						
Qtr 1	5	3	4	33	2	47
Qtr 2	3	3	7	25	2	40
Qtr 3	3	6	8	36	3	56
Qtr 4	2	10	11	28	2	53
Total	13	22	30	122	9	196
2006						
Qtr 1	2	7	5	29	1	44
Qtr 2	5	5	2	39	5	56
Qtr 3	4	2	13	21	5	45
Qtr 4	1	3	4	18	1	29
Total	12	17	24	107	12	174

Source: Mental Health Information System, Department of Health.

Table A2-12
Quarterly cannabis related inpatient treatment episodes by age group, September quarter 2000 - December 2006: males

	<15	15-24	25-34	35-44	45+	Total
2000						
Qtr 3	-	16	6	3	-	25
Qtr 4	1	11	10	4	4	30
Total	1	27	16	7	4	55
2001						
Qtr 1	-	11	3	6	2	22
Qtr 2	1	14	11	1	1	28
Qtr 3	-	16	16	6	-	38
Qtr 4	-	17	11	1	-	29
Total	1	58	41	14	3	117
2002						
Qtr 1	-	14	10	4	-	28
Qtr 2	-	22	13	8	1	44
Qtr 3	2	19	12	3	2	38
Qtr 4	2	23	11	4	1	41
Total	4	78	46	19	4	151
2003						
Qtr 1	1	10	8	2	2	23
Qtr 2	-	13	8	2	-	23
Qtr 3	1	16	11	5	4	37
Qtr 4	1	20	12	3	5	41
Total	3	59	39	12	11	124
2004						
Qtr 1	-	11	14	10	2	37
Qtr 2	-	11	9	3	1	24
Qtr 3	1	17	8	7	3	36
Qtr 4	-	19	15	4	1	39
Total	1	58	46	24	7	136
2005						
Qtr 1	1	14	8	3	2	28
Qtr 2	-	11	9	5	-	25
Qtr 3	-	18	17	5	2	42
Qtr 4	-	15	8	5	1	29
Total	1	58	43	18	5	124
2006						
Qtr 1	-	15	10	2	1	28
Qtr 2	1	16	20	9	3	49
Qtr 3	-	16	13	3	2	34
Qtr 4	-	7	9	3	-	19
Total	1	54	52	17	6	130

Source: Mental Health Information System, Department of Health.

Table A2-13
Quarterly cannabis related inpatient treatment episodes by age group, September quarter 2000 - December 2006: females

	<15	15-24	25-34	35-44	45+	Total
2000						
Qtr 3	2	1	8	1	-	12
Qtr 4	-	6	3	-	-	9
Total	2	7	11	1	-	21
2001						
Qtr 1	2	2	4	2	-	10
Qtr 2	-	5	3	1	1	10
Qtr 3	-	5	3	5	1	14
Qtr 4	-	3	-	-	-	3
Total	2	15	10	8	2	37
2002						
Qtr 1	-	3	1	3	-	7
Qtr 2	-	9	9	1	-	19
Qtr 3	-	8	3	2	1	14
Qtr 4	1	4	5	2	2	14
Total	1	24	18	8	3	54
2003						
Qtr 1	-	2	-	-	1	3
Qtr 2	2	4	1	2	-	9
Qtr 3	-	11	3	3	2	19
Qtr 4	1	6	3	5	-	15
Total	3	23	7	10	3	46
2004						
Qtr 1	1	6	5	2	-	14
Qtr 2	-	8	2	1	-	11
Qtr 3	-	10	8	5	-	23
Qtr 4	-	9	10	2	-	21
Total	1	33	25	10	-	69
2005						
Qtr 1	2	2	7	5	1	17
Qtr 2	-	8	5	1	1	15
Qtr 3	-	9	4	1	-	14
Qtr 4	-	10	5	7	1	23
Total	2	29	21	14	3	69
2006						
Qtr 1	-	6	3	3	4	16
Qtr 2	1	2	3	-	1	7
Qtr 3	1	3	5	1	1	11
Qtr 4	-	5	2	-	1	8
Total	2	16	13	4	7	42

Source: Mental Health Information System, Department of Health.

Table A2-14
Quarterly cannabis related inpatient treatment
episodes by age group, September quarter
2000 - December 2006: persons

	<15	15-24	25-34	35-44	45+	Total
2000						
Qtr 3	2	17	14	4	-	37
Qtr 4	1	17	13	4	4	39
Total	3	34	27	8	4	76
2001						
Qtr 1	2	13	7	8	2	32
Qtr 2	1	19	14	2	2	38
Qtr 3	-	21	19	11	1	52
Qtr 4	-	20	11	1	-	32
Total	3	73	51	22	5	154
2002						
Qtr 1	-	17	11	7	-	35
Qtr 2	-	31	22	9	1	63
Qtr 3	2	27	15	5	3	52
Qtr 4	3	27	16	6	3	55
Total	5	102	64	27	7	205
2003						
Qtr 1	1	12	8	2	3	26
Qtr 2	2	17	9	4	-	32
Qtr 3	1	27	14	8	6	56
Qtr 4	2	26	15	8	5	56
Total	6	82	46	22	14	170
2004						
Qtr 1	1	17	19	12	2	51
Qtr 2	-	19	11	4	1	35
Qtr 3	1	27	16	12	3	59
Qtr 4	-	28	25	6	1	60
Total	2	91	71	34	7	205
2005						
Qtr 1	3	16	15	8	3	45
Qtr 2	-	19	14	6	1	40
Qtr 3	-	27	21	6	2	56
Qtr 4	-	25	13	12	2	52
Total	3	87	63	32	8	193
2006						
Qtr 1	-	21	13	5	5	44
Qtr 2	2	18	23	9	4	56
Qtr 3	1	19	18	4	3	45
Qtr 4	-	12	11	3	1	27
Total	3	70	65	21	13	172

Source: Mental Health Information System, Department of Health.

Figure A2-4
Quarterly cannabis related inpatient treatment episodes by sex
September quarter 2000 - December 2006

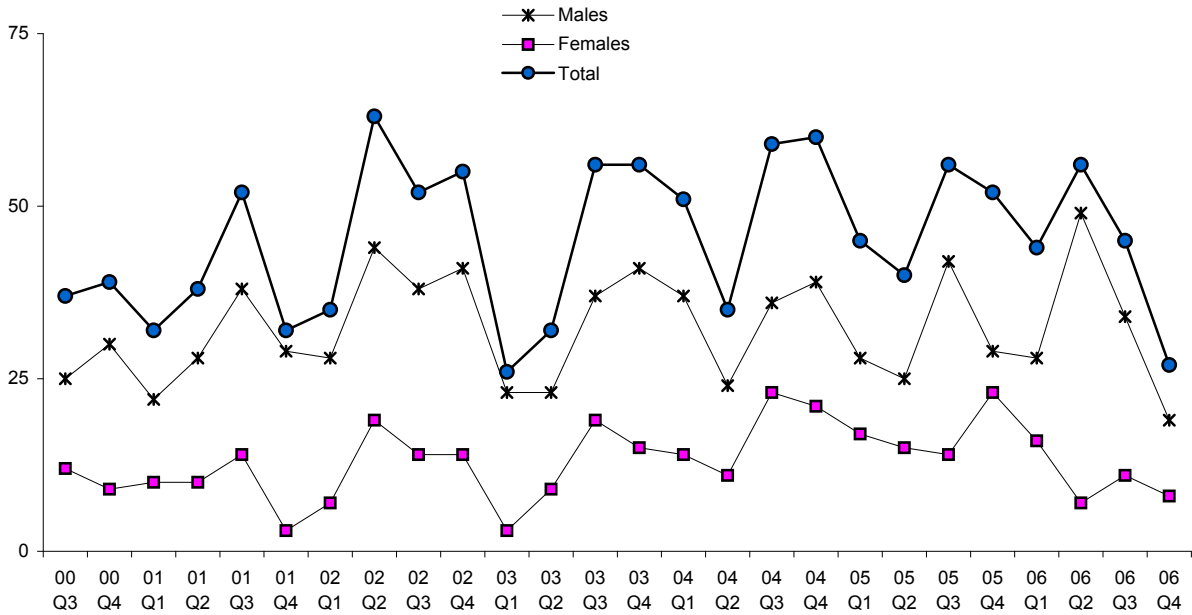


Figure A2-5
Quarterly cannabis related inpatient treatment episodes by age group
September quarter 2000 - December 2006

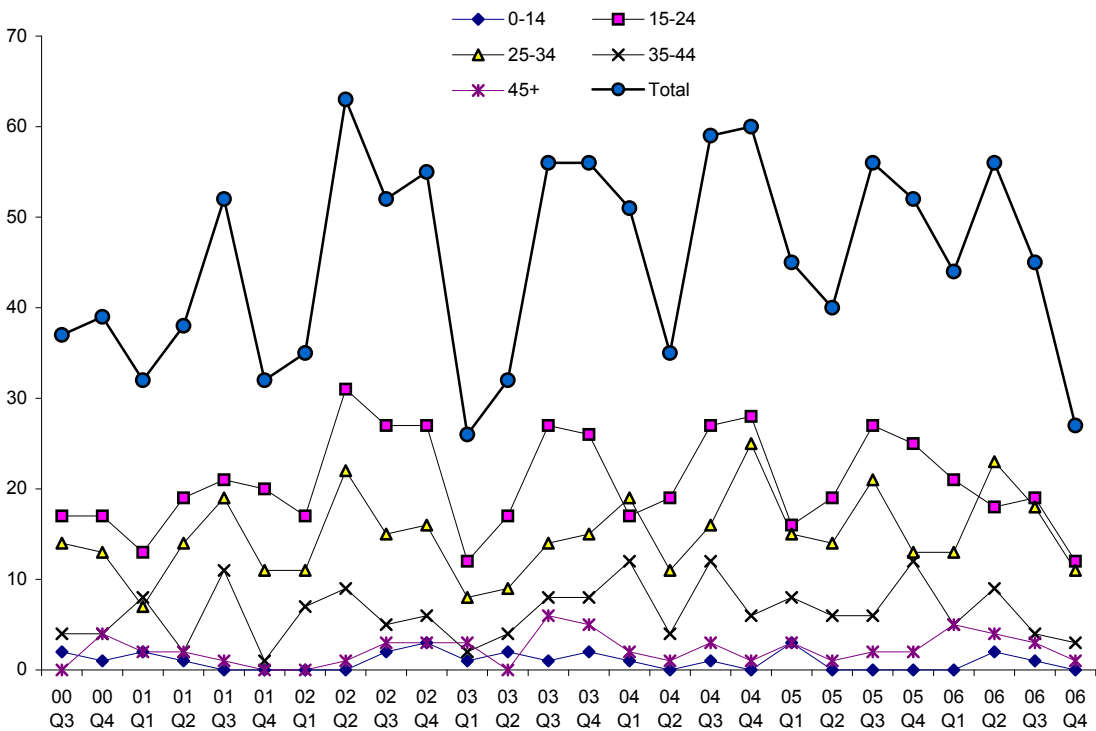
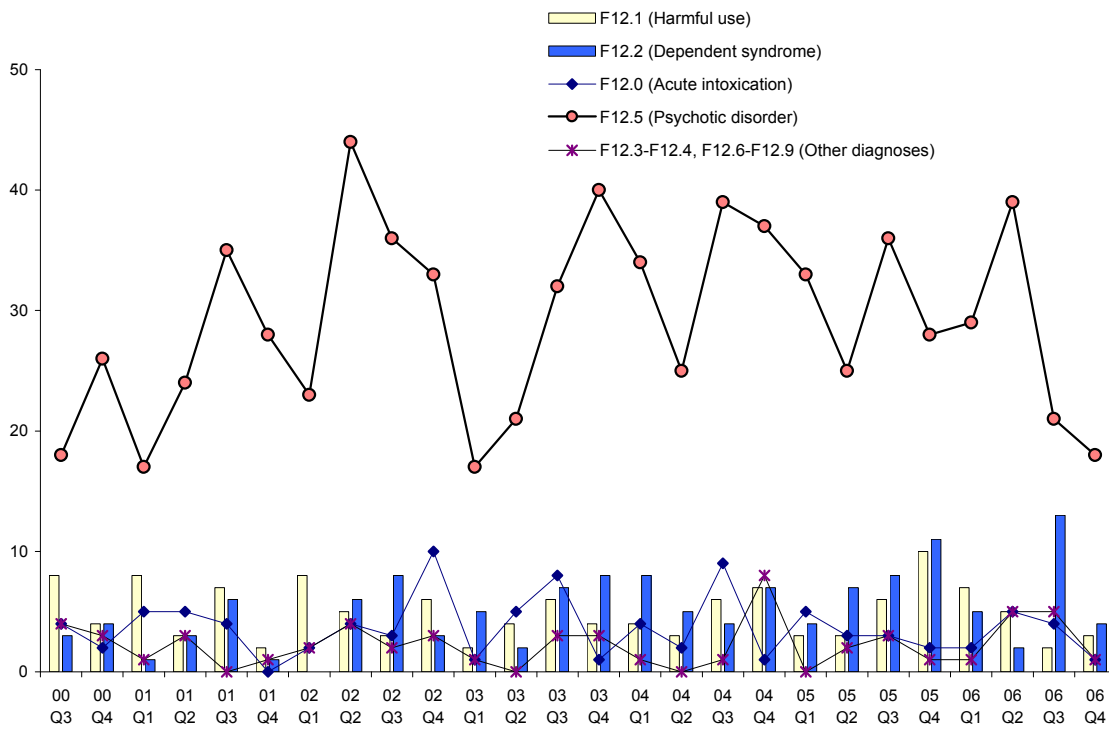


Figure A2-6
Quarterly cannabis related inpatient treatment episodes by sub diagnostic group
September quarter 2000 - December 2006



Part 3: Criminal Justice Data Tables & Figures

Cannabis Cautions, 1998 - 2004

Table A3-1
Quarterly cautions by region & age group - cannabis cautioning mandatory education scheme
December quarter 1998 - March quarter 2004

	Metro		Non metro	Total	Age Group					Total
	n	%	n		18 - 20	21 - 24	25 - 30	31 - 40	40+	
1998										
Qtr 4	21	87.5	3	24	3	16	2	2	1	24
1999										
Qtr 1	18	90.0	2	20	7	9	3	-	1	20
Qtr 2	25	92.6	2	27	46	36	27	24	22	27
Qtr 3	22	88.0	3	25	5	6	3	9	2	25
Qtr 4	23	92.0	2	25	6	7	6	5	1	25
Total	138	93.9	9	147	64	58	39	38	26	147
2000										
Qtr 1	36	97.3	1	37	15	10	8	3	1	37
Qtr 2	132	71.4	53	185	89	41	33	17	5	185
Qtr 3	165	73.3	60	225	118	56	32	15	4	225
Qtr 4	154	76.2	48	202	92	45	32	27	6	202
Total	487	75.0	162	649	314	152	105	62	16	649
2001										
Qtr 1	157	77.3	46	203	68	55	43	28	9	203
Qtr 2	175	72.9	65	240	103	79	25	24	9	240
Qtr 3	172	71.7	68	240	113	56	34	20	17	240
Qtr 4	149	69.3	66	215	99	49	31	29	7	215
Total	653	72.7	245	898	383	239	133	101	42	898
2002										
Qtr 1	197	77.6	57	254	122	61	39	21	11	254
Qtr 2	189	77.1	56	245	133	55	32	15	10	245
Qtr 3	207	83.5	41	248	124	55	24	35	10	248
Qtr 4	151	76.3	47	198	109	35	25	22	7	198
Total	744	78.7	201	945	488	206	120	93	38	945
2003										
Qtr 1	157	71.4	63	220	na	na	na	na	na	na
Qtr 2	180	76.6	55	235	na	na	na	na	na	na
Qtr 3	137	69.5	60	197	na	na	na	na	na	na
Qtr 4	110	63.6	63	173	na	na	na	na	na	na
Total	584	70.8	241	825	na	na	na	na	na	na
2004										
Qtr 1	89	67.9	42	131	na	na	na	na	na	na

Source: WA Police, Alcohol & Drug Coordination Unit.

Note: From October 1998 to September 1999 a 12 month pilot cannabis cautioning scheme was conducted in the Bunbury sub district and the Mirrabooka district and was expanded to a Statewide scheme in March 2000. Breakdown of 2003 data by age group not available.

Figure A3-1
Quarterly cautions - cannabis cautioning mandatory education scheme
December quarter 1998 - March quarter 2004

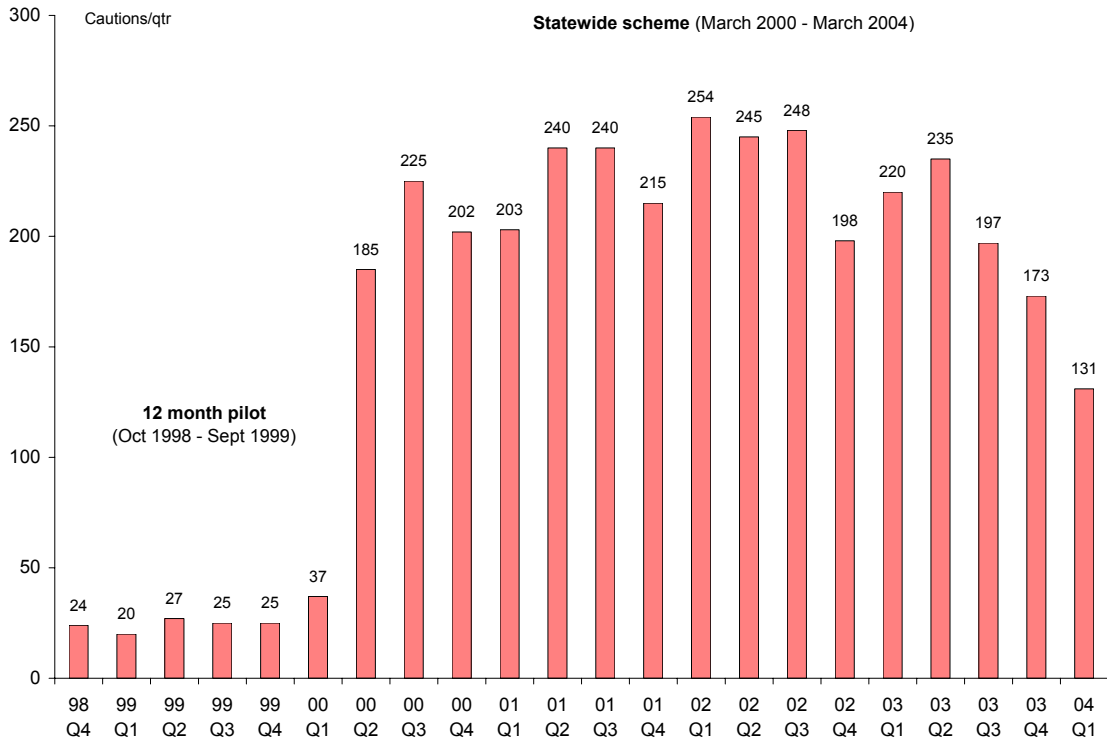
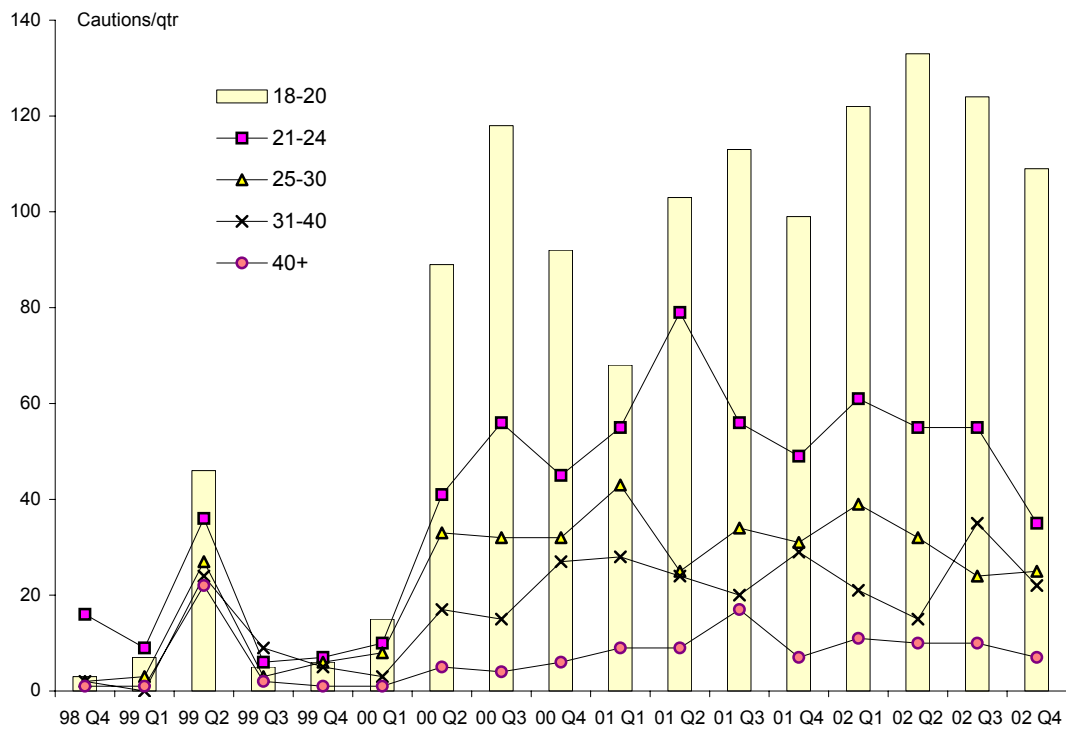


Figure A3-2
Quarterly cautions by age group - cannabis cautioning mandatory education scheme
December quarter 1998 - December quarter 2002



Cannabis Convictions - All Courts

Possession of Smoking Implements [s.5(1)(d)(i)]

Table A3-2

Quarterly cannabis charges heard in all courts by age group
possession of smoking implements, March quarter 2002 - March quarter 2007

	<18		18-24		25-34		35-44		45+		Unknown	Total
	n	%	n	%	n	%	n	%	n	%		
2002												
Mar qtr	48	7.1	251	37.1	226	33.4	118	17.4	32	4.7	2	677
Jun qtr	53	7.5	238	33.9	257	36.6	129	18.3	24	3.4	2	703
Sep qtr	51	7.6	229	34.2	254	37.9	106	15.8	27	4.0	3	670
Dec qtr	48	7.4	239	37.0	233	36.1	98	15.2	27	4.2	1	646
Total	200	7.4	957	35.5	970	36.0	451	16.7	110	4.1	8	2,696
2003												
Mar qtr	64	10.2	198	31.5	222	35.3	118	18.8	21	3.3	6	629
Jun qtr	54	8.5	203	32.1	208	32.9	130	20.6	34	5.4	3	632
Sep qtr	57	7.9	255	35.4	239	33.1	132	18.3	38	5.3	-	721
Dec qtr	56	8.8	212	33.3	215	33.8	113	17.8	40	6.3	-	636
Total	231	8.8	868	33.2	884	33.8	493	18.8	133	5.1	9	2,618
2004												
Mar qtr	44	7.4	205	34.4	190	31.9	121	20.3	36	6.0	-	596
Jun qtr	32	7.2	150	33.8	139	31.3	97	21.8	26	5.9	-	444
Sep qtr	40	8.5	160	34.0	161	34.3	88	18.7	21	4.5	-	470
Dec qtr	31	7.0	131	29.4	160	35.9	98	22.0	26	5.8	-	446
Total	147	7.5	646	33.0	650	33.2	404	20.7	109	5.6	-	1,956
2005												
Mar qtr	33	6.4	160	31.3	182	35.5	105	20.5	32	6.3	-	512
Jun qtr	59	10.4	158	27.8	204	35.9	111	19.5	36	6.3	-	568
Sep qtr	32	5.8	186	33.5	196	35.3	116	20.9	26	4.7	-	556
Dec qtr	40	6.4	176	28.0	251	39.9	134	21.3	28	4.5	-	629
Total	164	7.2	680	30.0	833	36.8	466	20.6	122	5.4	-	2,265
2006												
Mar qtr	38	6.5	168	28.6	197	33.6	146	24.9	38	6.5	-	587
Jun qtr	45	7.6	204	34.3	196	33.0	110	18.5	39	6.6	-	594
Sep qtr	44	6.0	226	30.7	260	35.4	166	22.6	39	5.3	-	735
Dec qtr	54	7.2	237	31.6	263	35.1	153	20.4	42	5.6	1	750
Total	181	6.8	835	31.3	916	34.4	575	21.6	158	5.9	1	2,666
2007												
Mar qtr	33	4.7	235	33.1	269	37.9	133	18.7	40	5.6	-	710

Source: Magistrates Courts & Tribunals Directorate, Department of Attorney General.

Note: Age is calculated at the time of conviction.

Possession of Cannabis [s.6(2)]

Table A3-3
Quarterly cannabis charges heard in all courts by age group
possession of cannabis, March quarter 2002 - March quarter 2007

	<18		18-24		25-34		35-44		45+		Unknown	Total
	n	%	n	%	n	%	n	%	n	%		
2002												
Mar qtr	57	6.4	336	37.4	308	34.3	156	17.4	40	4.5	1	898
Jun qtr	66	6.4	351	33.8	391	37.6	184	17.7	43	4.1	4	1,039
Sep qtr	59	6.1	356	36.8	345	35.6	165	17.0	40	4.1	3	968
Dec qtr	53	5.8	309	33.6	322	35.0	172	18.7	62	6.7	2	920
Total	235	6.1	1,352	35.3	1,366	35.7	677	17.7	185	4.8	10	3,825
2003												
Mar qtr	45	5.1	291	33.1	320	36.4	174	19.8	45	5.1	5	880
Jun qtr	59	6.6	287	32.0	305	34.0	189	21.1	50	5.6	6	896
Sep qtr	50	4.8	362	35.0	355	34.4	192	18.6	74	7.2	-	1,033
Dec qtr	77	9.2	280	33.4	290	34.6	141	16.8	51	6.1	-	839
Total	231	6.3	1,220	33.4	1,270	34.8	696	19.1	220	6.0	11	3,648
2004												
Mar qtr	78	9.0	266	30.7	285	32.9	177	20.4	60	6.9	-	866
Jun qtr	60	8.7	216	31.4	235	34.2	131	19.0	46	6.7	-	688
Sep qtr	61	9.0	219	32.3	220	32.4	138	20.3	40	5.9	1	679
Dec qtr	43	6.2	202	29.3	262	38.0	139	20.1	43	6.2	1	690
Total	242	8.3	903	30.9	1,002	34.3	585	20.0	189	6.5	2	2,923
2005												
Mar qtr	48	7.1	182	27.0	244	36.2	153	22.7	47	7.0	-	674
Jun qtr	74	9.4	216	27.3	275	34.8	155	19.6	70	8.9	-	790
Sep qtr	63	7.8	242	30.0	278	34.4	161	19.9	64	7.9	-	808
Dec qtr	64	7.6	237	28.0	299	35.3	189	22.3	58	6.8	-	847
Total	249	8.0	877	28.1	1,096	35.1	658	21.1	239	7.7	-	3,119
2006												
Mar qtr	64	7.9	235	28.8	272	33.4	189	23.2	53	6.5	2	815
Jun qtr	70	8.6	252	30.9	264	32.4	170	20.8	60	7.4	-	816
Sep qtr	66	6.5	309	30.5	353	34.9	221	21.8	63	6.2	-	1,012
Dec qtr	85	8.7	272	27.8	342	34.9	199	20.3	81	8.3	1	980
Total	285	7.9	1,068	29.5	1,231	34.0	779	21.5	257	7.1	3	3,623
2007												
Mar qtr	55	6.3	254	29.2	335	38.5	168	19.3	56	6.4	2	870

Source: Magistrates Courts & Tribunals Directorate, Department of Attorney General.

Note: Age is calculated at the time of conviction.

Excludes non expiable charges eg offences involving cannabis derivatives.

Cultivation of Cannabis [s.7(2)]

Table A3-4
Quarterly cannabis charges heard in all courts by age group
cultivation of cannabis, March quarter 2002 - March quarter 2007

	<18		18-24		25-34		35-44		45+		Un-known	Total
	n	%	n	%	n	%	n	%	n	%		
2002												
Mar qtr	3	1.7	64	27.1	82	34.7	54	22.9	32	13.6	1	236
Jun qtr	9	4.8	46	24.3	68	36.0	48	25.4	17	9.0	1	189
Sep qtr	7	4.1	44	25.6	65	37.8	30	17.4	25	14.5	1	172
Dec qtr	6	3.3	62	34.1	59	32.4	35	19.2	18	9.9	2	182
Total	25	3.2	216	27.7	274	35.2	167	21.4	92	11.8	5	779
2003												
Mar qtr	11	5.2	41	19.3	69	32.5	60	28.3	28	13.2	3	212
Jun qtr	7	3.6	41	20.9	71	36.2	52	26.5	23	11.7	2	196
Sep qtr	11	7.0	38	24.1	56	35.4	30	19.0	23	14.6	-	158
Dec qtr	10	6.1	42	25.8	53	32.5	44	27.0	14	8.6	-	163
Total	39	5.4	162	22.2	249	34.2	186	25.5	88	12.1	5	729
2004												
Mar qtr	9	4.0	52	22.9	74	32.6	54	23.8	37	16.3	1	227
Jun qtr	8	4.8	32	19.3	68	41.0	40	24.1	18	10.8	-	166
Sep qtr	4	3.2	27	21.6	44	35.2	29	23.2	21	16.8	-	125
Dec qtr	6	4.1	19	13.1	56	38.6	39	26.9	23	15.9	2	145
Total	27	4.1	130	19.6	242	36.5	162	24.4	99	14.9	3	663
2005												
Mar qtr	5	2.7	46	25.0	61	33.2	37	20.1	35	19.0	-	184
Jun qtr	7	4.3	31	19.0	56	34.4	39	23.9	30	18.4	-	163
Sep qtr	2	1.5	27	20.3	52	39.1	28	21.1	24	18.0	-	133
Dec qtr	5	3.9	30	23.3	47	36.4	28	21.7	19	14.7	-	129
Total	19	3.1	134	22.1	216	35.6	132	21.7	106	17.5	-	607
2006												
Mar qtr	8	4.2	40	21.2	55	29.1	60	31.7	26	13.8	-	189
Jun qtr	3	2.3	32	24.8	42	32.6	24	18.6	28	21.7	-	129
Sep qtr	12	8.2	19	12.9	53	36.1	42	28.6	21	14.3	-	147
Dec qtr	4	2.9	26	19.0	48	35.0	39	28.5	20	14.6	-	137
Total	27	4.5	117	19.4	198	32.9	165	27.4	95	15.8	-	602
2007												
Mar qtr	3	1.6	37	20.2	68	37.2	51	27.9	24	13.1	-	183

Source: Magistrates Courts & Tribunals Directorate, Department of Attorney General.

Note: Age is calculated at the time of conviction.

All Cannabis Offences [s.5(1)(d)(i), s.6(2) & s.7(2)]

Table A3-5
Quarterly cannabis charges heard in all courts by age group - all offences
March quarter 2002 - March quarter 2007

	<18		18-24		25-34		35-44		45+		Unknown	Total
	n	%	n	%	n	%	n	%	n	%		
2002												
Mar qtr	108	6.0	651	35.9	616	34.0	328	18.1	104	5.7	4	1,811
Jun qtr	128	6.6	635	32.9	716	37.1	361	18.7	84	4.4	7	1,931
Sep qtr	117	6.5	629	34.8	664	36.7	301	16.6	92	5.1	7	1,810
Dec qtr	107	6.1	610	34.9	614	35.1	305	17.4	107	6.1	5	1,747
Total	460	6.3	2,525	34.6	2,610	35.8	1,295	17.7	387	5.3	23	7,300
2003												
Mar qtr	120	7.0	530	30.8	611	35.5	352	20.5	94	5.5	14	1,721
Jun qtr	120	7.0	531	30.8	584	33.9	371	21.5	107	6.2	11	1,724
Sep qtr	118	6.2	655	34.3	650	34.0	354	18.5	135	7.1	-	1,912
Dec qtr	143	8.7	534	32.6	558	34.1	298	18.2	105	6.4	-	1,638
Total	501	7.2	2,250	32.2	2,403	34.4	1,375	19.7	441	6.3	25	6,995
2004												
Mar qtr	131	7.8	523	31.0	549	32.5	352	20.8	133	7.9	1	1,689
Jun qtr	100	7.7	398	30.7	442	34.1	268	20.6	90	6.9	-	1,298
Sep qtr	105	8.2	406	31.9	425	33.4	255	20.0	82	6.4	1	1,274
Dec qtr	80	6.5	352	27.5	478	37.3	276	21.5	92	7.2	3	1,281
Total	416	7.5	1,679	30.3	1,894	34.2	1,151	20.8	397	7.2	5	5,542
2005												
Mar qtr	86	6.3	388	28.3	487	35.5	295	21.5	114	8.3	-	1,370
Jun qtr	140	9.2	405	26.6	535	35.2	305	20.1	136	8.9	-	1,521
Sep qtr	97	6.5	455	30.4	526	35.1	305	20.4	114	7.6	-	1,497
Dec qtr	109	6.8	443	27.6	597	37.2	351	21.9	103	6.5	2	1,605
Total	432	7.2	1,691	28.2	2,145	35.8	1,256	21.0	465	7.8	2	5,991
2006												
Mar qtr	110	6.9	443	27.8	524	32.9	395	24.8	117	7.4	2	1,591
Jun qtr	118	7.7	488	31.7	502	32.6	304	19.8	127	8.3	-	1,539
Sep qtr	122	6.4	554	29.3	666	35.2	429	22.7	123	6.5	-	1,894
Dec qtr	143	7.7	535	28.7	653	35.0	391	20.9	143	7.7	2	1,867
Total	493	7.2	2,020	29.3	2,345	34.0	1,519	22.0	510	7.4	4	6,891
2007												
Mar qtr	91	5.2	526	29.8	672	38.1	352	20.0	120	6.8	2	1,763

Source: Magistrates Courts & Tribunals Directorate, Department of Attorney General.

Note: Age is calculated at the time of conviction.

Possession of Smoking Implement [s.5(1)(d)(i)]

Figure A3-3

Proportion (%) of annual cannabis charges heard in all courts by age group possession of smoking implement, 2002 - 2006

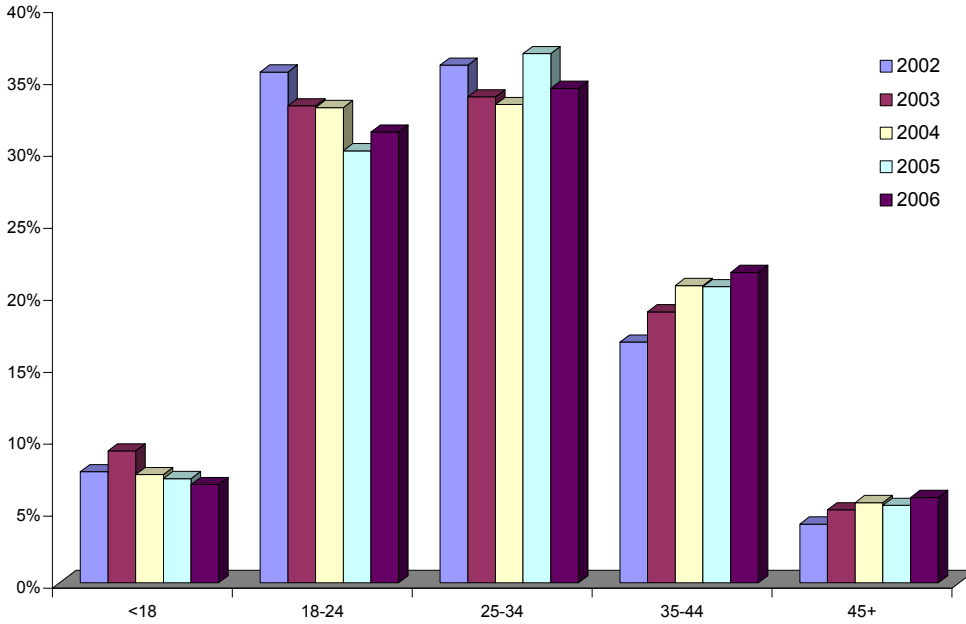
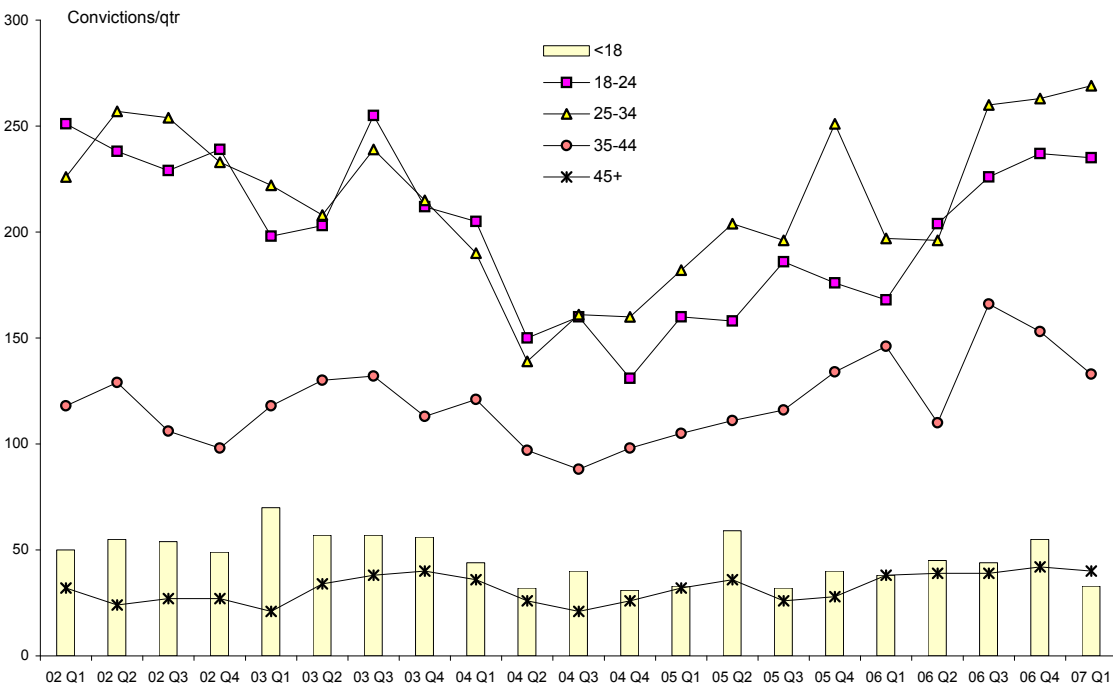


Figure A3-4

Quarterly cannabis charges heard in all courts by age group - possession of smoking implement, March quarter 2002 - March quarter 2007



Possession of Cannabis [s.6(2)]

Figure A3-5

Proportion (%) of annual cannabis charges heard in all courts by age group possession of cannabis, 2002 - 2006

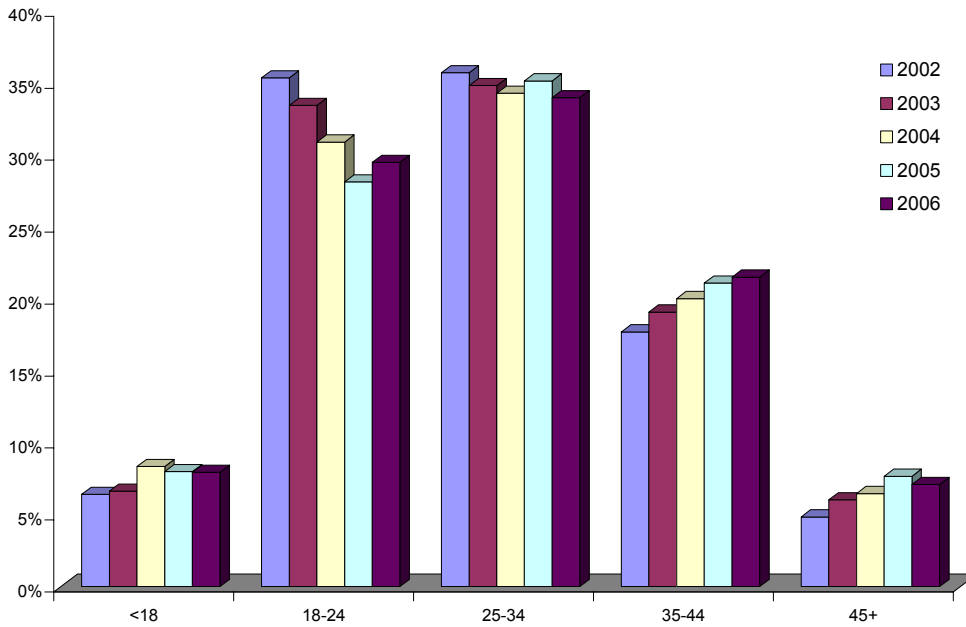
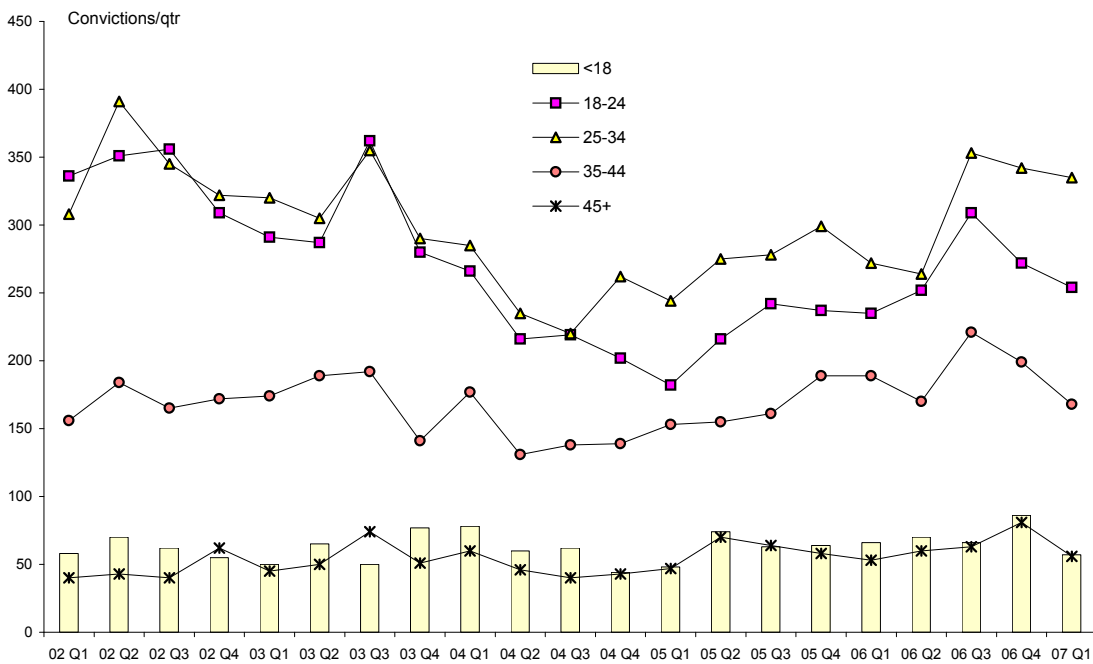


Figure A3-6

Quarterly cannabis charges heard in all courts by age group - possession of cannabis, March quarter 2002 - March quarter 2007



Cultivation of Cannabis [s.7(2)]

Figure A3-7
Proportion (%) of annual cannabis charges heard in all courts by age group cultivation of cannabis, 2002 - 2006

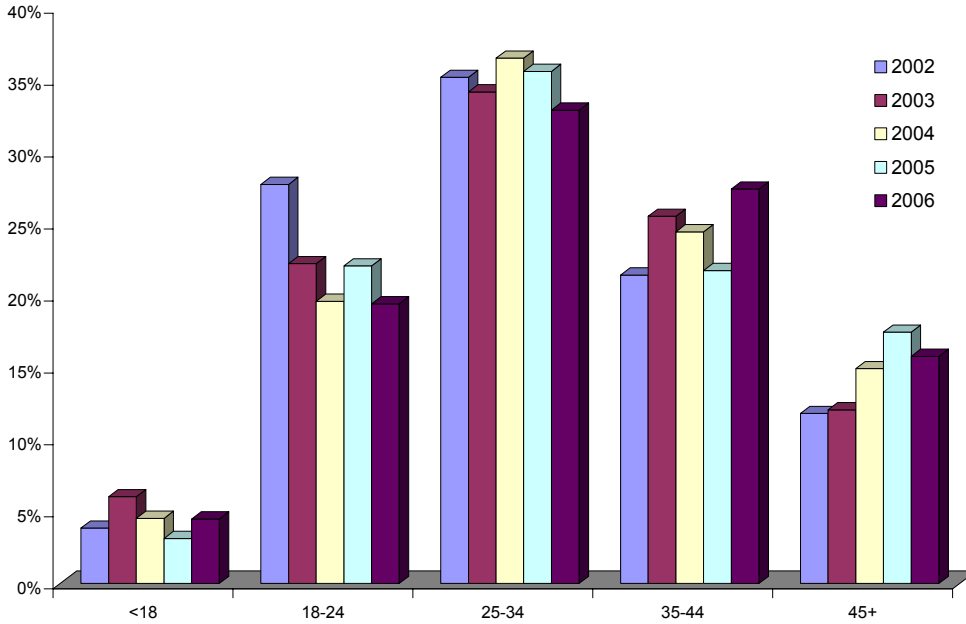
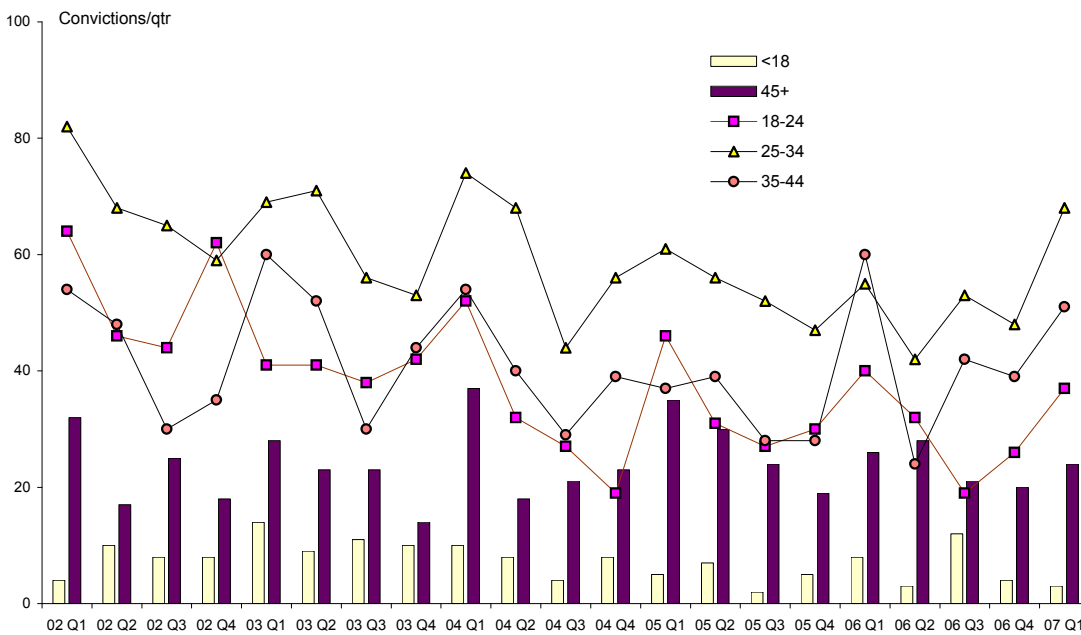


Figure A3-8
Quarterly cannabis charges heard in all courts by age group cultivation of cannabis, March quarter 2002 - March quarter 2007



All Cannabis Offences [s.5(1)(d)(i), s.6(2) & s.7(2)]

Figure A3-9
Proportion (%) of annual cannabis charges heard in all courts by age group
all offences, 2002 - 2006

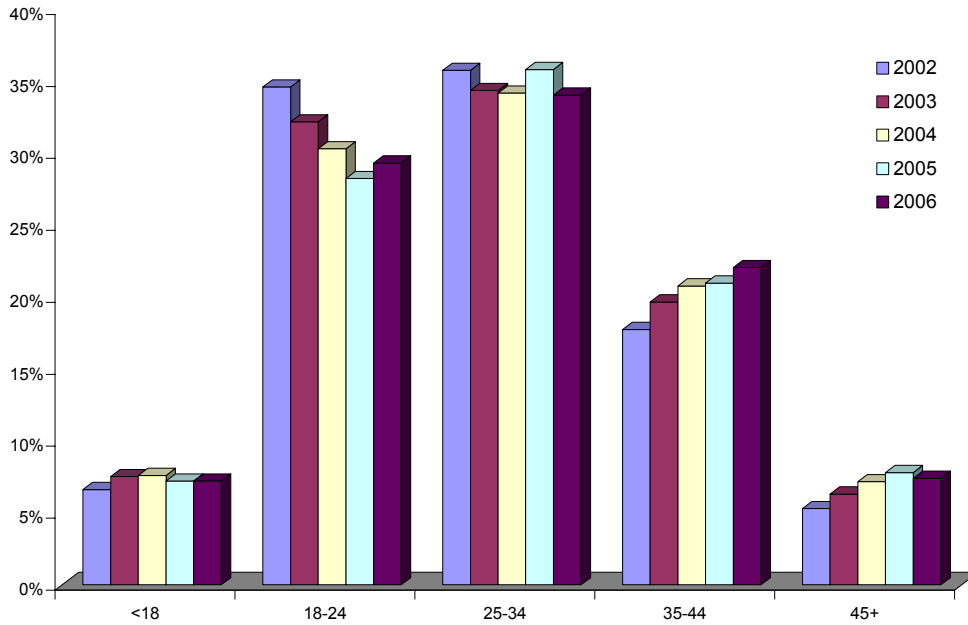
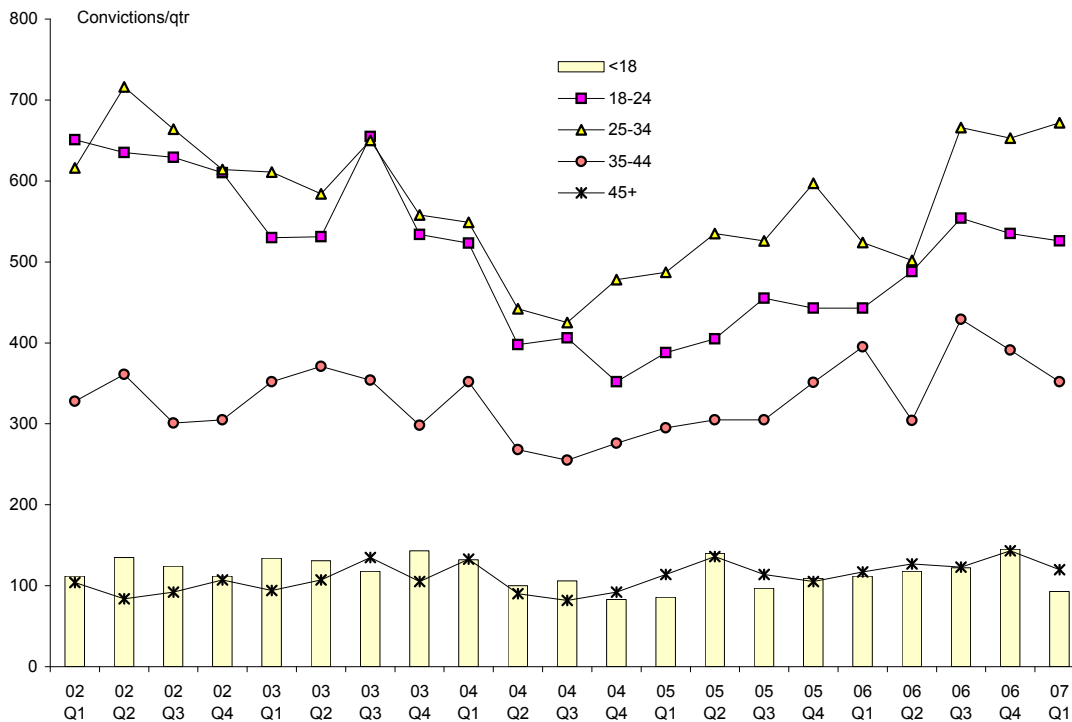


Figure A3-10
Quarterly cannabis charges heard in all courts by age group -
all offences, March quarter 2002 - March quarter 2007



All Drug Convictions - Magistrates Courts

Table A3-6

Annual drug charges heard in Magistrates Courts by Misuse of Drugs Act section & sex, 2002 - 2006

	Section 5 Offences concerned with premises, implements/utensils		Section 6 Offences concerned with possession/use		Section 7 Offences concerned with cultivation		Total
	n	%	n	%	n	%	
2002							
Females	469	24.6	1,304	68.3	136	7.1	1,909
Males	1,996	25.3	5,161	65.5	717	9.1	7,874
Unknown	99	28.9	219	64.0	24	7.0	342
Total	2,564	25.3	6,684	66.0	877	8.7	10,125
2003							
Females	479	25.6	1,263	67.4	132	7.0	1,874
Males	1,881	26.0	4,721	65.2	637	8.8	7,239
Unknown	88	23.7	246	66.3	37	10.0	371
Total	2,448	25.8	6,230	65.7	806	8.5	9,484
2004							
Females	351	21.1	1,196	71.7	120	7.2	1,667
Males	1,454	22.7	4,317	67.4	631	9.9	6,402
Unknown	41	22.7	131	72.4	9	5.0	181
Total	1,846	22.4	5,644	68.4	760	9.2	8,250
2005							
Females	414	24.3	1,159	68.0	131	7.7	1,704
Males	1,773	25.5	4,586	66.1	581	8.4	6,940
Unknown	39	21.8	133	74.3	7	3.9	179
Total	2,226	25.2	5,878	66.6	719	8.1	8,823
2006							
Females	505	23.9	1,488	70.4	121	5.7	2,114
Males	2,023	25.2	5,454	67.9	560	7.0	8,037
Unknown	50	24.3	142	68.9	12	5.8	206
Total	2,578	24.9	7,084	68.4	695	6.7	10,357
Total							
Females	2,218	23.9	6,410	69.2	640	6.9	9,268
Males	9,127	25.0	24,239	66.4	3,126	8.6	36,492
Unknown	317	24.8	871	68.1	91	7.1	1,279
Total	11,662	24.8	31,520	67.0	3,857	8.2	47,039

Source: Magistrates Courts & Tribunals Directorate, Department of Attorney General

Table A3-7
Annual drug charges heard in Magistrates Courts by Misuse of Drugs Act
section & age group, 2002 - 2006

	Section 5		Section 6		Section 7		Ttal	
	n	%	n	%	n	%	n	%
2002								
Unknown	8	0.2	22	0.3	6	0.7	36	0.4
18-24	967	37.7	2,408	36.0	224	25.5	3,599	35.5
25-34	1,004	39.2	2,573	38.5	319	36.4	3,896	38.5
35-44	463	18.1	1,276	19.1	213	24.3	1,952	19.3
45+	122	4.8	405	6.1	115	13.1	642	6.3
Total	2,564	100.0	6,684	100.0	877	100.0	10,125	100.0
2003								
Unknown	9	0.4	21	0.3	6	0.8	36	0.3
18-24	875	35.7	2,023	32.5	171	21.2	3,069	32.4
25-34	913	37.3	2,429	39.0	288	35.7	3,630	38.3
35-44	510	20.8	1,296	20.8	226	28.0	2,032	21.4
45+	141	5.8	461	7.4	115	14.3	717	7.6
Total	2,448	100.0	6,230	100.0	806	100.0	9,484	100.0
2004								
Unknown	-		4	0.1	3	0.4	7	0.1
18-24	644	34.9	1,807	32.0	140	18.4	2,591	31.4
25-34	669	36.2	2,127	37.7	285	37.5	3,081	37.3
35-44	420	22.8	1,264	22.4	202	26.6	1,886	22.9
45+	113	6.1	442	7.8	130	17.1	685	8.3
Total	1,846	100.0	5,644	100.0	760	100.0	8,250	100.0
2005								
Unknown	-		1	0.1	-		1	<0.1
18-24	717	32.2	1,730	29.4	142	19.7	2,589	29.3
25-34	876	39.4	2,328	39.6	272	37.8	3,476	39.4
35-44	496	22.3	1,329	22.6	168	23.4	1,993	22.6
45+	137	6.2	490	8.3	137	19.1	764	8.7
Total	2,226	100.0	5,878	100.0	719	100.0	8,823	100.0
2006								
Unknown	1	<0.1	5	0.1	-		6	0.1
18-24	854	33.1	2,120	29.9	130	18.7	3,104	30.0
25-34	956	37.1	2,734	38.6	240	34.5	3,930	37.9
35-44	600	23.3	1,603	22.6	199	28.6	2,402	23.2
45+	167	6.5	622	8.8	126	18.1	915	8.8
Total	2,578	100.0	7,084	100.0	695	100.0	10,357	100.0
Total								
Unknown	18	0.2	53	0.1	15	0.4	86	0.2
18-24	4,047	34.8	10,088	32.0	807	20.9	14,952	31.8
25-34	4,418	37.9	12,191	38.7	1,404	36.4	18,013	38.3
35-44	2,489	21.3	6,768	21.5	1,008	26.1	10,265	21.8
45+	680	5.8	2,420	7.7	623	16.2	3,723	7.9
Total	11,662	100.0	31,520	100.0	3,857	100.0	47,039	100.0

Source: Magistrates Courts & Tribunals Directorate, Department of Attorney General.

Table A3-8
Quarterly drug charges heard in Magistrates Courts by type of drug
March quarter 2002 - March quarter 2007

	Cannabis		Non cannabis		Total		Cannabis		Non cannabis		Total
	n	%	n	%			n	%	n	%	
2002						2005					
Mar qtr	1,824	70.0	780	30.0	2,604	Mar qtr	1,427	66.4	721	33.6	2,148
Jun qtr	1,909	73.2	700	26.8	2,609	Jun qtr	1,515	69.5	664	30.5	2,179
Sep qtr	1,820	73.0	672	27.0	2,492	Sep qtr	1,524	70.6	635	29.4	2,159
Dec qtr	1,766	73.0	654	27.0	2,420	Dec qtr	1,620	69.3	717	30.7	2,337
Total	7,319	72.3	2,806	27.7	10,125	Total	6,086	69.0	2,737	31.0	8,823
2003						2006					
Mar qtr	1,704	73.7	610	26.3	2,311	Mar qtr	1,620	69.1	723	30.9	2,343
Jun qtr	1,723	72.0	669	28.0	2,392	Jun qtr	1,546	67.5	746	32.5	2,292
Sep qtr	1,911	73.8	679	26.2	2,590	Sep qtr	1,904	63.9	1,077	36.1	2,981
Dec qtr	1,603	73.2	588	26.8	2,191	Dec qtr	1,852	67.6	889	32.4	2,741
Total	6,941	73.2	2,543	26.8	9,484	Total	6,922	66.8	3,435	33.2	10,357
2004						2007					
Mar qtr	1,647	73.4	596	26.6	2,243	Mar qtr	1,769	67.2	864	32.8	2,633
Jun qtr	1,336	66.2	681	33.8	2,017						
Sep qtr	1,305	65.7	680	34.3	1,985						
Dec qtr	1,331	66.4	674	33.6	2,005						
Total	5,619	68.1	2,631	31.9	8,250						

Source: Magistrates Courts & Tribunals Directorate, Department of Attorney General

Table A3-9
Quarterly cannabis charges heard in Magistrates Courts by seriousness
March quarter 2002 - March quarter 2007

	Simple		Serious		Total		Simple		Serious		Total
	n	%	n	%			n	%	n	%	
2002						2005					
Mar qtr	1,689	92.6	135	7.4	1,824	Mar qtr	1,268	88.9	159	11.1	1,427
Jun qtr	1,789	93.7	120	6.3	1,909	Jun qtr	1,369	90.4	146	9.6	1,515
Sep qtr	1,679	92.3	141	7.7	1,820	Sep qtr	1,386	90.9	138	9.1	1,524
Dec qtr	1,626	92.1	140	7.9	1,766	Dec qtr	1,487	91.8	133	8.2	1,620
Total	6,783	92.7	536	7.3	7,319	Total	5,510	90.5	576	9.5	6,086
2003						2006					
Mar qtr	1,591	93.4	113	6.6	1,704	Mar qtr	1,471	90.8	149	9.2	1,620
Jun qtr	1,587	92.1	136	7.9	1,723	Jun qtr	1,409	91.1	137	8.9	1,546
Sep qtr	1,774	92.8	137	7.2	1,911	Sep qtr	1,754	92.1	150	7.9	1,904
Dec qtr	1,478	92.2	125	7.8	1,603	Dec qtr	1,707	92.2	144	7.8	1,852
Total	6,430	92.6	511	7.4	6,941	Total	6,342	91.6	580	8.4	6,922
2004						2007					
Mar qtr	1,545	93.8	102	6.2	1,647	Mar qtr	1,654	93.5	115	6.5	1,769
Jun qtr	1,187	88.8	149	11.2	1,336						
Sep qtr	1,151	88.2	154	11.8	1,305						
Dec qtr	1,195	89.8	136	10.2	1,331						
Total	5,078	90.4	541	9.6	5,619						

Source: Magistrates Courts & Tribunals Directorate, Department of Attorney General

Table A3-10
Quarterly serious drug charges heard in Magistrates Courts by type of drug
March quarter 2002 - March quarter 2007

	Cannabis		Amphetamines		Other drugs		Total
	n	%	n	%	n	%	n
2002							
Mar qtr	135	38.6	113	32.3	102	29.1	350
Jun qtr	120	37.4	118	36.8	83	25.9	321
Sep qtr	141	48.1	83	28.3	69	23.5	293
Dec qtr	140	43.9	86	27.0	93	29.2	319
Total	536	41.8	400	31.2	347	27.0	1,283
2003							
Mar qtr	113	39.8	68	23.9	103	36.3	284
Jun qtr	136	45.0	64	21.2	102	33.8	302
Sep qtr	137	44.1	65	20.9	109	35.0	311
Dec qtr	125	42.1	88	29.6	84	28.3	297
Total	511	42.8	285	23.9	398	33.3	1,194
2004							
Mar qtr	102	38.5	89	33.6	74	27.9	265
Jun qtr	149	41.3	127	35.2	85	23.5	361
Sep qtr	154	43.4	98	27.6	103	29.0	355
Dec qtr	136	43.3	90	28.7	88	28.0	314
Total	541	41.8	404	31.2	350	27.0	1,295
2005							
Mar qtr	159	41.4	106	27.6	119	31.0	384
Jun qtr	146	53.9	78	28.8	47	17.3	271
Sep qtr	138	58.2	57	24.1	42	17.7	237
Dec qtr	133	55.0	69	28.5	40	16.5	242
Total	576	50.8	310	27.3	248	21.9	1,134
2006							
Mar qtr	149	40.1	130	34.9	93	25.0	372
Jun qtr	137	39.9	107	31.2	99	28.9	343
Sep qtr	150	30.7	208	42.5	131	26.8	489
Dec qtr	144	35.0	162	39.3	106	25.7	412
Total	580	35.9	607	37.6	429	26.5	1,616
2007							
Mar qtr	115	31.3	130	36.4	122	33.2	367

Source: Magistrates Courts & Tribunals Directorate, Department of Attorney General

Table A3-11
Quarterly drug charges heard in Magistrates Courts by type of drug
s.6(2) offences, March quarter 2002 - March quarter 2007

	Cannabis		Amphetamines		Heroin	Cocaine	Ecstasy	Other/ unknown	Total
	n	%	n	%					
2002									
Mar qtr	835	60.8	253	18.4	17	1	18	250	1,374
Jun qtr	967	67.2	226	15.7	22	-	17	207	1,439
Sep qtr	902	64.3	258	18.4	20	3	15	205	1,403
Dec qtr	860	65.4	221	16.8	20	-	26	189	1,317
Total	3,564	64.4	958	17.3	79	4	76	851	5,533
2003									
Mar qtr	828	66.6	218	17.5	25	-	23	150	1,244
Jun qtr	828	63.1	239	18.2	25	2	15	204	1,313
Sep qtr	972	67.0	238	16.4	29	-	20	191	1,450
Dec qtr	754	65.4	197	17.1	16	-	19	167	1,153
Total	3,382	65.5	892	17.3	95	2	77	712	5,160
2004									
Mar qtr	783	65.2	228	19.0	16	2	36	136	1,201
Jun qtr	623	57.8	270	25.0	22	-	36	127	1,078
Sep qtr	608	56.3	263	24.4	27	-	28	153	1,079
Dec qtr	641	57.2	368	32.9	18	-	26	67	1,120
Total	2,655	59.3	1,129	25.2	83	2	126	483	4,478
2005									
Mar qtr	619	56.9	356	32.7	29	-	30	54	1,088
Jun qtr	709	58.7	394	32.6	24	2	40	39	1,208
Sep qtr	737	59.2	407	32.7	13	-	45	43	1,245
Dec qtr	774	58.1	475	35.6	22	-	38	25	1,335
Total	2,839	58.2	1,632	33.5	88	2	153	161	4,876
2006									
Mar qtr	746	60.9	394	32.2	12	1	50	21	1,224
Jun qtr	740	59.1	426	34.0	26	-	48	13	1,253
Sep qtr	934	57.3	598	36.7	17	-	56	26	1,631
Dec qtr	885	59.8	497	33.6	28	-	47	23	1,480
Total	3,305	59.1	1,915	34.3	83	1	201	83	5,588
2007									
Mar qtr	805	58.0	483	34.8	15	-	53	32	1,388

Source: Magistrates Courts & Tribunals Directorate, Department of Attorney General

Table A3-12
Quarterly cannabis charges heard in Magistrates Courts by type of offence which resulted in fines
- average fine, 2002 - 2006

	s. 5(1)(d)(i)		s. 6(2)		s. 7(2)	
	Av fine	No. charges	Av fine	No. charges	Av fine	No. charges
2002						
Mar qtr	\$192	525	\$212	691	\$326	196
Jun qtr	\$204	517	\$196	772	\$381	144
Sep qtr	\$193	513	\$215	710	\$392	133
Dec qtr	\$207	486	\$215	700	\$383	150
2003						
Mar qtr	\$198	466	\$213	668	\$368	165
Jun qtr	\$217	483	\$229	680	\$396	160
Sep qtr	\$195	537	\$201	781	\$350	121
Dec qtr	\$225	472	\$226	612	\$352	126
2004						
Mar qtr	\$216	458	\$222	655	\$387	193
Jun qtr	\$225	319	\$216	494	\$388	129
Sep qtr	\$233	326	\$246	473	\$342	98
Dec qtr	\$223	332	\$230	517	\$370	107
2005						
Mar qtr	\$219	408	\$248	527	\$382	151
Jun qtr	\$232	423	\$264	603	\$492	127
Sep qtr	\$240	434	\$264	614	\$434	106
Dec qtr	\$254	469	\$274	637	\$505	104
2006						
Mar qtr	\$250	474	\$267	655	\$417	163
Jun qtr	\$253	508	\$271	655	\$476	114
Sep qtr	\$237	589	\$276	801	\$433	111
Dec qtr	\$269	601	\$297	759	\$510	112
2007						
Mar qtr	\$279	596	\$296	691	\$502	158

Source: Magistrates Courts & Tribunals Directorate, Department of Attorney General.

Table A3-13
Frequency & value of fines (\$) imposed for cannabis charges heard in Magistrates Courts by type of offence, March quarter 2002 - March quarter 2004

	Simple offences				Serious offences				Total
	s.5(1)(d)(i)	s.6(2)	s.7(2)	Total	s.6(1)(a)	s.6(1)(b)-(c)	s.7(1)(a)	s.7(1)(b)	
0 - 49	14	23	1	38	3	-	-	-	41
50 - 99	365	314	24	703	-	-	-	-	703
100 - 149	1,318	1,916	160	3,394	12	6	-	-	3,412
150 - 199	1,115	1,093	100	2,308	4	7	1	-	2,320
200 - 249	620	1,260	260	2,140	18	14	-	1	2,173
250 - 299	168	360	114	642	12	10	3	-	667
300 - 349	304	461	183	948	21	13	2	-	984
350 - 399	39	68	26	133	1	1	-	-	135
400 - 449	148	233	126	507	27	12	12	-	558
450 - 499	11	10	9	30	-	1	1	-	32
500 +	355	531	385	1,271	162	34	75	4	1,546
Total	4,457	6,269	1,388	12,114	260	98	94	5	12,571
Total fines	\$912,425	\$1,339,115	\$513,513	\$2,765,053	\$173,150	\$49,800	\$95,100	\$3,950	\$3,087,053
Average fine	\$205	\$214	\$370	\$228	\$666	\$508	\$1,012	\$790	\$246

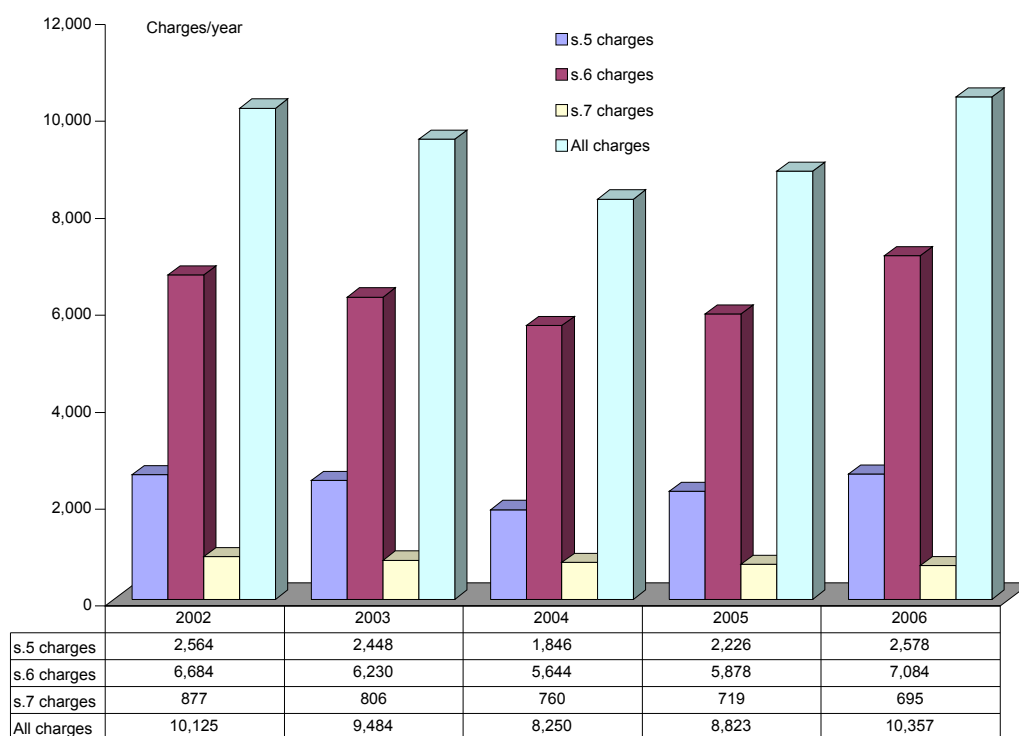
Source: Magistrates Courts & Tribunals Directorate, Department of Attorney General.

Table A3-14
Frequency & value of fines (\$) imposed for cannabis charges heard in Magistrates Courts by type of offence, June quarter 2004 - March quarter 2007

	Simple offences				Serious offences				Total
	s.5(1)(d)(i)	s.6(2)	s.7(2)	Total	s.6(1)(a)	s.6(1)(b)-(c)	s.7(1)(a)	s.7(1)(b)	
0 - 49	9	17	-	26	1	-	-	-	27
50 - 99	290	187	15	492	-	-	1	-	493
100 - 149	1,595	1,496	148	3,239	4	6	-	-	3,249
150 - 199	1,181	1,162	82	2,425	8	4	3	-	2,440
200 - 249	898	1,898	212	3,008	28	14	9	1	3,060
250 - 299	192	524	97	813	14	8	4	-	839
300 - 349	369	683	197	1,249	34	8	5	1	1,297
350 - 399	34	68	23	125	4	-	2	-	131
400 - 449	216	401	182	799	47	14	14	-	874
450 - 499	13	18	5	36	1	-	-	-	37
500 +	682	972	519	2,173	371	55	152	1	2,752
Total	5,479	7,426	1,480	14,385	512	109	190	3	15,199
Total fines	\$1,347,623	\$1,972,482	\$648,614	\$3,968,719	\$417,850	\$75,600	\$198,425	\$1,250	\$4,661,844
Average fine	\$246	\$266	\$438	\$276	\$816	\$694	\$1,044	\$417	\$307

Source: Magistrates Courts & Tribunals Directorate, Department of Attorney General.

Figure A3-11
Annual drug charges heard in Magistrates Courts by Misuse of Drugs Act section, 2002 - 2006



Cannabis Convictions - All Courts

Table A3-15
Annual cannabis charges by offence & court of appearance, 2002 - 2006

	s.5(1)(d)(i) (Possession of smoking implements)			s.6(2) (Possession of cannabis)			s.7(2) (Cultivation of cannabis)			Total		
	Ch Crt	Mag	Total	Ch Crt	Mag	Total	Ch Crt	Mag	Total	Ch Crt	Mag	Total
2002	223	2,473	2,696	260	3,565	3,825	34	745	779	517	6,783	7,300
2003	255	2,363	2,618	266	3,382	3,648	48	681	729	569	6,426	6,995
2004	164	1,792	1,956	268	2,655	2,923	31	632	663	463	5,079	5,542
2005	182	2,083	2,265	280	2,839	3,119	22	587	609	484	5,509	5,993
2006	204	2,462	2,666	318	3,305	3,623	28	574	602	550	6,341	6,891
Total	1,028	11,173	12,201	1,392	15,746	17,138	163	3,219	3,382	2,583	30,138	32,721

Source: Magistrates Courts & Tribunals Directorate, Department of Attorney General.

Note: Ch Crt = Case heard in Children's Court, Mag = Magistrates Courts (formerly known as Courts of Petty Sessions).

All Drug Convictions - Children's Courts

Table A3-16
Annual drug charges heard in Children's Courts by Misuse of Drugs Act section & sex, 2002 - 2006

	Section 5 Offences concerned with premises, implements/utensils		Section 6 Offences concerned with possession/use		Section 7 Offences concerned with cultivation		Total
	n	%	n	%	n	%	
2002							
Females	26	27.4	64	67.4	5	5.3	95
Males	203	34.6	354	60.3	30	5.1	587
Unknown	2	40.0	2	40.0	1	20.0	5
Total	231	33.6	420	61.1	36	5.2	687
2003							
Females	22	27.2	58	71.6	1	1.2	81
Males	239	37.2	354	55.1	49	7.6	642
Unknown	4	100.0	-	-	-	-	4
Total	265	36.5	412	56.7	50	6.9	727
2004							
Females	21	26.6	56	70.9	2	2.5	79
Males	146	27.8	348	66.3	31	5.9	525
Unknown	1	100.0	-	-	-	-	1
Total	168	27.8	404	66.8	33	5.5	605
2005							
Females	21	25.3	59	71.1	3	3.6	83
Males	161	29.3	370	67.3	19	3.5	550
Unknown	1	50.0	1	50.0	-	-	2
Total	183	28.8	430	67.7	22	3.5	635
2006							
Females	22	22.0	77	77.0	1	1.0	100
Males	188	31.2	388	64.3	27	4.5	603
Unknown	-	-	3	100.0	-	-	3
Total	210	29.7	468	66.3	28	4.0	706
Total							
Females	112	25.6	314	71.7	12	2.7	438
Males	937	32.2	1,814	62.4	156	5.4	2,907
Unknown	8	53.3	6	40.0	1	6.7	15
Total	1,057	31.5	2,134	63.5	169	5.0	3,360

Source: Magistrates Courts & Tribunals Directorate, Department of Attorney General
Note: Based on cases heard in Children's Courts (ie persons <18 years when charged).

Table A3-17
Annual drug charges heard in Children's Courts by Misuse of Drugs Act section & age group, 2002 - 2006

	Section 5		Section 6		Section 7		Total	
	n	%	n	%	n	%	n	%
2002								
10-13	4	1.7	15	3.6	-		19	2.8
14-15	41	17.7	92	21.9	4	11.1	137	19.9
16-17	161	69.7	270	64.3	23	63.9	454	66.1
18+	25	10.8	43	10.2	9	25.0	77	11.2
Total	231	100.0	420	100.0	36	100.0	687	100.0
2003								
10-13	6	2.3	13	3.2	3	6.0	22	3.0
14-15	64	24.2	96	23.3	8	16.0	168	23.1
16-17	168	63.4	243	59.0	30	60.0	441	60.7
18+	27	10.2	60	14.6	9	18.0	96	13.2
Total	265	100.0	412	100.0	50	100.0	727	100.0
2004								
10-13	5	3.0	24	5.9	4	12.1	33	5.5
14-15	39	23.2	63	15.6	5	15.2	107	17.7
16-17	107	63.7	275	68.1	20	60.6	402	66.4
18+	17	10.1	42	10.4	4	12.1	63	10.4
Total	168	100.0	404	100.0	33	100.0	605	100.0
2005								
10-13	7	3.8	15	3.5	2	9.1	24	3.8
14-15	43	23.5	108	25.1	3	13.6	154	24.3
16-17	115	62.8	252	58.6	14	63.6	381	60.0
18+	18	9.8	55	12.8	3	13.6	76	12.0
Total	183	100.0	430	100.0	22	100.0	635	100.0
2006								
10-13	3	1.4	17	3.6	-		20	2.8
14-15	41	19.5	129	27.6	7	25.0	177	25.1
16-17	142	67.6	274	58.5	20	71.4	436	61.8
18+	24	11.4	48	10.3	1	3.6	73	10.3
Total	210	100.0	468	100.0	28	100.0	706	100.0
Total								
10-13	25	2.4	84	3.9	9	5.3	118	3.5
14-15	228	21.6	488	22.9	27	16.0	743	22.1
16-17	693	65.6	1,314	61.6	107	63.3	2,114	62.9
18+	111	10.5	248	11.6	26	15.4	385	11.5
Total	1,057	100.0	2,134	100.0	169	100.0	3,360	100.0

Source: Magistrates Courts & Tribunals Directorate, Department of Attorney General.

Table A3-18
Quarterly drug charges heard in Children's Courts by offence & type of drug
March quarter 2002 - March quarter 2007

	Charges - cannabis (including derivatives)						Charges - non cannabis				Total
	Simple offences			Serious offences			Simple offences		Serious offences		
	s.5(1)(d)(i) (Possess smoking implement)	s.6(2) (Possess/use)	s.7(2) (Possess/cultivate)	s.6(1)(a) - s.6(1)(c) (Possession with intent to sell or supply; sell/supply)	s.7(1)(a) - s.7(1)(b) (Possess/cultivate with intent to sell or supply)	Sub total	s.5(1)(a)(i) - s.5(1)(a)(ii), s.5(1)(d)(ii)	s.6(2) (Possess/use)	s.6(1)(a) - s.6(1)(c) (Possession with intent to sell or supply; sell/supply)	Sub total	
2002											
Mar qtr	54	63	5	3	1	126	-	26	13	39	165
Jun qtr	58	72	12	5	-	147	2	24	12	38	185
Sep qtr	55	66	10	8	-	139	2	16	17	35	174
Dec qtr	56	59	7	6	1	129	4	18	12	34	163
Total	223	260	34	22	2	541	8	84	54	146	687
2003											
Mar qtr	69	52	13	3	1	138	3	21	8	32	170
Jun qtr	61	68	8	8	-	145	4	18	6	28	173
Sep qtr	63	61	14	8	1	147	1	22	14	37	184
Dec qtr	62	85	13	6	-	166	2	27	5	34	200
Total	255	266	48	25	2	596	10	88	33	131	727
2004											
Mar qtr	50	83	10	11	-	154	1	20	6	27	181
Jun qtr	36	65	10	6	2	119	2	21	4	27	146
Sep qtr	47	71	5	6	-	129	1	26	10	37	166
Dec qtr	31	49	6	2	-	88	-	16	8	24	112
Total	164	268	31	25	2	490	4	83	28	115	605
2005											
Mar qtr	40	55	7	9	-	111	-	10	8	18	129
Jun qtr	63	81	8	11	-	163	-	20	6	26	189
Sep qtr	38	71	2	13	-	124	1	19	13	33	157
Dec qtr	41	74	5	9	-	129	-	21	10	31	160
Total	182	281	22	42	-	527	1	70	37	108	635
2006											
Mar qtr	43	69	8	6	-	126	1	6	10	17	143
Jun qtr	50	76	4	9	-	139	2	20	6	28	167
Sep qtr	50	78	12	14	-	154	2	19	14	35	189
Dec qtr	61	95	4	14	-	174	1	19	13	33	207
Total	204	318	28	43	-	593	6	64	43	113	706
2007											
Mar qtr	41	65	3	8	-	117	-	21	4	25	142

Source: Magistrates Courts & Tribunals Directorate, Department of Attorney General

Cannabis Convictions - Children's Courts

Table A3-19

Annual cannabis charges heard in Children's Courts by offence & frequency of delay (days) of finalisation - all offences, 2002 - 2006

	s. 5(1)(d)(i)		s. 6(2)		s. 7(2)		Total	
	n	%	n	%	n	%	n	%
2002								
0 - 29	154	69.1	179	68.8	27	79.4	360	69.6
30 - 59	33	14.8	32	12.3	4	11.8	69	13.3
60 - 179	29	13.0	40	15.4	3	8.8	72	13.9
180+	7	3.1	9	3.5	-		16	3.1
Total	223	100.0	260	100.0	34	100.0	517	100.0
2003								
0 - 29	172	67.5	165	62.0	31	64.6	368	64.7
30 - 59	39	15.3	51	19.2	10	20.8	100	17.6
60 - 179	40	15.7	42	15.8	7	14.6	89	15.6
180+	4	1.6	8	3.0	-		12	2.1
Total	255	100.0	266	100.0	48	100.0	569	100.0
2004								
0 - 29	104	63.4	170	63.4	20	64.5	294	63.5
30 - 59	23	14.0	45	16.8	3	5.7	71	15.3
60 - 179	30	18.3	43	16.0	6	19.4	79	17.1
180+	7	4.3	10	3.7	2	6.5	19	4.1
Total	164	100.0	268	100.0	31	100.0	463	100.0
2005								
0 - 29	113	62.1	190	67.9	16	72.7	319	65.9
30 - 59	35	19.2	41	14.6	2	9.1	78	16.1
60 - 179	27	14.8	34	12.1	3	13.6	64	13.2
180+	7	3.8	15	5.4	1	4.5	23	4.8
Total	182	100.0	280	100.0	22	100.0	484	100.0
2006								
0 - 29	132	64.7	210	66.0	22	78.6	364	66.2
30 - 59	23	11.3	55	17.3	2	7.1	80	14.5
60 - 179	44	21.6	45	14.2	4	14.3	93	16.9
180+	5	2.5	8	2.5	-		13	2.4
Total	204	100.0	318	100.0	28	100.0	550	100.0
Total								
0 - 29	675	65.7	914	65.7	116	71.2	1,705	66.0
30 - 59	153	14.9	224	16.1	21	12.9	398	15.4
60 - 179	170	16.5	204	14.7	23	14.1	397	15.4
180+	30	2.9	50	3.6	3	1.8	83	3.2
Total	1,028	100.0	1,392	100.0	163	100.0	2,583	100.0

Source: Magistrates Courts & Tribunals Directorate, Department of Attorney General.

Table A3-20
Quarterly cannabis charges by offence - persons aged <18 years
March quarter 2002 - March quarter 2007

	s. 5(1)(d)(i)		s. 6(2)		s. 7(2)		Total
	n	%	n	%	n	%	
2002							
Mar qtr	50	44.6	58	51.8	4	3.6	112
Jun qtr	55	40.7	70	51.9	10	7.4	135
Sep qtr	54	43.5	62	50.0	8	6.5	124
Dec qtr	49	43.8	55	49.1	8	7.1	112
Total	208	43.1	245	50.7	30	6.2	483
2003							
Mar qtr	70	52.2	50	37.3	14	10.4	134
Jun qtr	57	43.5	65	49.6	9	6.9	131
Sep qtr	57	48.3	50	42.4	11	9.3	118
Dec qtr	56	39.2	77	53.8	10	7.0	143
Total	240	45.6	242	46.0	44	8.4	526
2004							
Mar qtr	44	33.3	78	59.1	10	7.6	132
Jun qtr	32	32.0	60	60.0	8	8.0	100
Sep qtr	40	37.7	62	58.5	4	3.8	106
Dec qtr	31	37.3	44	53.0	8	9.6	83
Total	147	34.9	244	58.0	30	7.1	421
2005							
Mar qtr	33	38.4	48	55.8	5	5.8	86
Jun qtr	59	42.1	74	52.9	7	5.0	140
Sep qtr	32	33.0	63	64.9	2	2.1	97
Dec qtr	40	36.7	64	58.7	5	4.6	109
Total	164	38.0	249	57.6	19	4.4	432
2006							
Mar qtr	38	34.5	64	58.2	8	7.3	110
Jun qtr	45	38.1	70	59.3	3	2.5	118
Sep qtr	44	36.1	66	54.1	12	9.8	122
Dec qtr	54	37.8	85	59.4	4	2.8	143
Total	181	36.7	285	57.8	27	5.5	493
2007							
Mar qtr	33	36.3	55	60.4	3	3.3	91

Source: Magistrates Courts & Tribunals Directorate, Department of Attorney General.

Note: Age is calculated at the time of conviction.

Figure A3-12
Quarterly cannabis charges by type of offence - persons aged < 18 years
March quarter 2002 - March quarter 2007

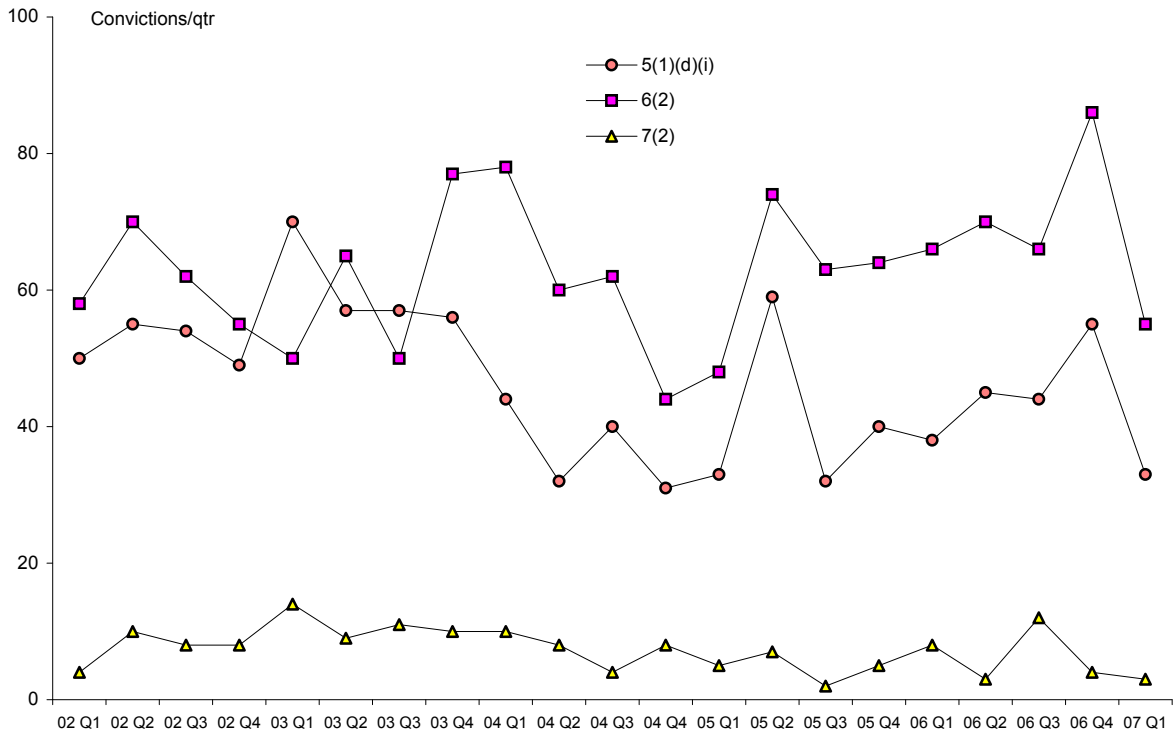


Figure A3-13
Proportion (%) of quarterly cannabis charges by type of offence - persons aged < 18 years
March quarter 2002 - March quarter 2007

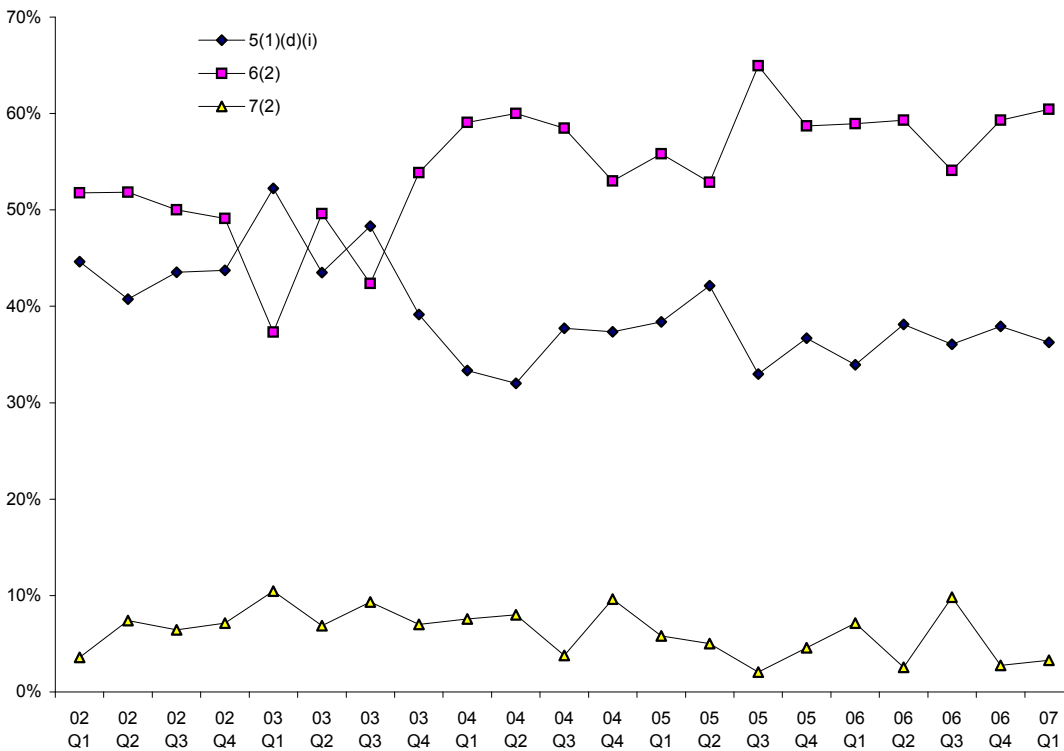


Table A3-21

Annual cannabis charges heard in Children's Courts by outcome possession of smoking implements [s. 5(1)(d)(i)], 2002 - 2006

	2002		2003		2004		2005		2006	
	n	%	n	%	n	%	n	%	n	%
Dismissed	4	1.8	3	1.2	5	3.0	2	1.1	9	4.4
Fine	25	11.2	46	18.0	25	15.2	26	14.3	28	13.7
Good behaviour bond	14	6.3	14	5.5	9	5.5	15	8.2	12	5.9
Intensive youth supervision order	14	6.3	13	5.1	20	12.2	15	8.2	18	8.8
Juvenile conditional release order	17	7.6	9	3.5	12	7.3	5	2.7	15	7.4
Juvenile justice team referral	48	21.5	51	20.0	26	15.9	26	14.3	41	20.1
No further order	3	1.3	5	2.0	7	4.3	10	5.5	5	2.5
No punishment	33	14.7	37	14.5	18	11.0	29	15.9	27	13.2
Youth community based order	42	18.8	35	13.7	23	14.0	35	19.2	30	14.7
Other	27	12.1	42	16.5	20	12.2	19	10.4	19	9.3
Total	223	100.0	255	100.0	164	100.0	182	100.0	204	100.0

Source: Magistrates Courts & Tribunals Directorate, Department of Attorney General

Note: Based on cases heard in Children's Courts (ie persons <18 years when charged).

Table A3-22

Annual cannabis charges heard in Children's Courts by outcome possession of cannabis [s. 6(2)], 2002 - 2006

	2002		2003		2004		2005		2006	
	n	%	n	%	n	%	n	%	n	%
Dismissed	10	3.9	10	3.8	7	2.6	5	1.8	12	3.8
Fine	33	12.7	40	15.0	28	10.4	42	14.9	53	16.7
Good behaviour bond	16	6.2	21	7.9	29	10.8	19	6.8	19	6.0
Intensive youth supervision order	16	6.2	17	6.4	22	8.2	15	5.3	27	8.5
Juvenile conditional release order	9	3.5	11	4.1	19	7.1	5	1.8	2	0.6
Juvenile justice team referral	59	22.7	53	19.9	36	13.4	53	18.9	68	21.4
No further order	9	3.5	11	4.1	12	4.5	14	5.0	11	3.5
No punishment	41	15.8	35	13.2	37	13.8	45	16.0	50	15.8
Youth community based order	47	18.1	38	14.3	43	16.0	55	19.6	54	17.0
Other	20	7.7	30	11.3	35	13.1	38	13.5	22	6.9
Total	260	100.0	266	100.0	268	100.0	281	100.0	318	100.0

Source: Magistrates Courts & Tribunals Directorate, Department of Attorney General

Note: Based on cases heard in Children's Courts (ie persons <18 years when charged).

Table A3-23
Annual cannabis charges heard in Children's Courts by outcome
cultivation of cannabis [s.7(2)], 2002 - 2006

	2002		2003		2004		2005		2006	
	n	%	n	%	n	%	n	%	n	%
Dismissed	3	8.8	3	6.3	-		-		2	7.1
Fine	6	17.6	9	18.8	6	19.4	5	22.7	4	14.3
Good behaviour bond	-		1	2.1	3	9.7	4	18.2	2	7.1
Intensive youth supervision order	1	2.9	2	4.2	2	6.5	-		2	7.1
Juvenile conditional release order	-		3	6.3	1	3.2	-		-	
Juvenile justice team referral	12	35.3	12	25.0	2	6.5	6	27.3	8	28.6
No further order	2	5.9	3	6.3	1	3.2	1	4.5	1	3.6
No punishment	2	5.9	-		3	9.7	2	9.1	5	17.9
Youth community based order	3	8.8	5	10.4	7	22.6	3	13.6	3	10.7
Other	5	14.7	10	20.8	6	19.4	1	4.5	1	3.6
Total	34	100.0	48	100.0	31	100.0	22	100.0	28	100.0

Source: Magistrates Courts & Tribunals Directorate, Department of Attorney General

Note: Based on cases heard in Children's Courts (ie persons <18 years when charged).

Table A3-24
Annual cannabis charges heard in Children's Courts by outcome
all offences, 2002 - 2006

	2002		2003		2004		2005		2006	
	n	%	n	%	n	%	n	%	n	%
Dismissed	17	3.3	16	2.8	12	2.6	7	1.4	23	4.2
Fine	64	12.4	95	16.7	59	12.7	73	15.1	85	15.5
Good behaviour bond	30	5.8	36	6.3	41	8.9	38	7.8	33	6.0
Intensive youth supervision order	31	6.0	32	5.6	44	9.5	30	6.2	47	8.5
Juvenile conditional release order	26	5.0	23	4.0	32	6.9	10	2.1	17	3.1
Juvenile justice team referral	119	23.0	116	20.4	64	13.8	85	17.5	117	21.3
No further order	14	2.7	19	3.3	20	4.3	25	5.2	17	3.1
No punishment	76	14.7	72	12.7	58	12.5	76	15.7	82	14.9
Youth community based order	92	17.8	78	13.7	73	15.8	93	19.2	87	15.8
Other	52	10.1	82	14.4	61	13.2	58	12.0	42	7.6
Total	517	100.0	569	100.0	463	100.0	485	100.0	550	100.0

Source: Magistrates Courts & Tribunals Directorate, Department of Attorney General

Note: Based on cases heard in Children's Courts (ie persons <18 years when charged).

Part 4: Cost and Benefits Data Tables

Table A4-1
Expenditure (\$) all drug diversion program - Funding for capacity building
April 2004 - March 2007

	Apr-Jun 04	2004/2005	2005/2006	Jul 06 - Mar 07	Total
Cannabis law reform	35,063	-	-	-	35,063
Training	14,980	32,632	69,918	19,258	136,788
Management & coordination	38,749	76,944	95,335	27,806	238,834
Indigenous resources	-	138,103	-	-	138,103
Women's health services	-	-	-	96,415	96,415
Quality framework measures & implementation	3,750	21,858	15,000	-	40,608
Cannabis educational video	-	32,523	-	-	32,523
Information technology	10,000	2,877	-	-	12,877
Research & evaluation	-	9,091	83,973	54,500	147,564
Regional networking (WANADA)	4,375	-	10,000	10,000	24,375
WA Police	18,498	-	100,000	-	118,498
Department of Attorney General (contract variation)	-	-	-	107,450	107,450
Travel, regional support & administration	16,600	-	25,277	17,685	59,562
IDC support	-	-	164,326	61,372	225,698
POP/IDP/YPOP program support	-	-	24,035	9,021	33,056
Juvenile programs	-	-	-	29,796	29,796
Supporting resources	24,253	164,228	19,276	4,958	212,715
Agency development	27,864	-	-	-	27,864
Total	\$194,131	\$478,256	\$607,140	\$438,261	\$1,717,788

Source: Drug and Alcohol Office.

Note: Data for April-June 2004 calculated as 25% of 2003/2004 financial year totals.

Table A4-2
Expenditure (\$) all drug diversion program - Payments for client services
April 2004 - March 2007

	Apr - Jun 04	2004/2005	2005/2006	Jul 06 - Mar 07	Total
Regional service					
Goldfields CDST (Centrecare)	80	20	660	1,420	2,180
Great Southern CDST (Palmerston Assoc)	90	560	1,680	7,240	9,570
Kimberley CDST (North West Mental Health Service)	49	60	310	13,860	14,279
Midwest CDST (Geraldton Health Service)	70	440	2,280	860	3,650
North East Metro CDST (Holyoake Institute)	665	1,980	1,990	2,470	7,105
North Metro CDST (St John of God Health Care)	1,260	7,600	2,910	6,180	17,950
Perth Metro CDST (WA Council on Addictions))	200	4,190	3,400	-	7,790
Pilbara CDST (East Pilbara Health Service)	30	380	-	660	1,070
South East Metro CDST (Mission Australia)	750	5,460	2,360	1,640	10,210
South Metro CDST (Palmerston Assoc)	435	4,900	13,510	11,890	30,735
South West CDST (St John of God Health Care)	515	3,130	2,570	2,000	8,215
Wheatbelt CDST (Holyoake)	60	-	1,600	3,630	5,290
Rosella House Outreach (Drug Arm)	-	7,013	-	340	7,353
Milliya Rumurra Aboriginal Corp	-	-	31,425	-	31,425
Ngnowar-Aerwah Aboriginal Corp	-	-	8,175	-	8,175
Whole metropolitan services					
Aboriginal Alcohol & Drug Service (formerly NASAS)	50	-	1,840	-	1,890
Bridge Program & Harry Hunter (Salvation Army)	2,325	10,275	5,700	16,575	34,875
Cyrenian House (WA Council on Addictions)	1,148	13,230	7,915	6,710	29,003
DAWN Program (St John of God Health Care)	600	100	-	-	700
Hearth Program (Wesley Mission)	145	280	260	-	685
Holyoake Institute	1,190	9,380	9,560	10,720	30,850
Next Step Specialist Drug & Alcohol Services	-	-	-	-	-
Outcare	225	-	800	-	1,025
Palmerston Centre	1,535	3,175	7,550	5,040	17,300
Perth Women's Centre	400	740	1,860	1,960	4,960
Serenity Lodge	1,319	11,400	15,750	4,200	32,669
Yirra (Mission Australia)	1,720	2,110	7,730	7,350	18,910
Statewide services					
POP/IDP/YPOP	-	-	-	-	-
Total	14,860	\$86,423	\$131,835	\$104,745	337,863

Source: Drug and Alcohol Office.

Note: Aboriginal Alcohol & Drug Service formerly known as Noongar Alcohol & Substance Abuse Services (NASAS).
 Data for April-June 2004 calculated as 25% of 2003/2004 financial year totals.

Table A4-3
Expenditure (\$) all drug diversion program - Retainer funding
April 2004 - March 2007

	Apr - Jun 04	2004/2005	2005/2006	Jul 06 - Mar 07	Total
Regional service					
Goldfields CDST (CentreCare)	12,761	52,436	102,305	111,627	279,129
Great Southern CDST (Palmerston Assoc)	11,094	45,581	134,006	121,387	312,068
Kimberley CDST (North West Mental Health Service)	28,794	139,353	196,586	204,954	569,687
Midwest CDST (Geraldton Health Service)	28,255	153,106	104,451	153,202	439,014
North East Metro CDST (Holyoake Institute)	17,777	91,108	124,515	95,721	329,121
North Metro CDST (St John of God Health Care)	29,629	127,553	174,322	134,010	465,514
Perth Metro CDST (WA Council on Addictions)	17,777	54,665	74,709	46,103	193,254
Pilbara CDST (East Pilbara Health Service)	16,234	88,395	176,086	70,080	350,795
South East Metro CDST (Mission Australia)	17,777	91,108	124,515	95,721	329,121
South Metro CDST (Palmerston Assoc)	29,629	163,144	322,251	285,734	800,758
South West CDST (St John of God Health Care)	36,856	117,176	160,141	123,108	437,281
Wheatbelt CDST (Holyoake)	10,157	84,019	114,826	88,325	297,327
Rosella House (Drug Arm)	-	-	50,313	39,398	89,711
Milliya Rumurra Aboriginal Corp	-	-	50,400	38,745	89,145
Ngnowar-Aerwah Aboriginal Corp	-	-	25,200	19,373	44,573
Whole metropolitan services					
Aboriginal Alcohol & Drug Service	11,852	16,197	49,806	38,288	116,143
Bridge Program & Harry Hunter (Salvation Army)	55,702	171,284	234,089	179,956	641,031
Cyrenian House (WA Council on Addictions)	65,184	200,439	273,934	210,587	750,144
DAWN Program (St John of God Health Care)	7,500	46,125	63,038	48,460	165,123
Hearth Program (Wesley Mission)	5,926	18,222	24,903	19,145	68,196
Holyoake Institute	11,852	72,887	99,612	76,577	260,928
Next Step Specialist Drug & Alcohol Services	48,563	194,250	194,250	145,688	582,751
Outcare	-	-	-	-	-
Palmerston Centre	47,406	145,774	199,225	164,485	556,890
Perth Women's Centre	11,852	36,443	49,806	86,496	184,597
Serenity Lodge	20,148	61,954	116,671	113,091	311,864
Yirra (Mission Australia)	41,481	127,553	174,322	134,010	477,366
Statewide services					
POP/IDP/YPOP	27,079	149,885	229,463	438,334	844,761
Total	\$611,281	\$2,448,657	\$3,643,725	\$3,282,605	\$9,986,288

Source: Drug and Alcohol Office.

Note: Aboriginal Alcohol & Drug Service formerly known as Noongar Alcohol & Substance Abuse Services (NASAS).
 Data for April-June 2004 calculated as 25% of 2003/2004 financial year totals.
 In July 2006 - March 2007 data NGO funding based on the three quarterly payments made up to 31 March 2007.
 Funding for Next Step (ie government services) based on 75% of total annual funding.