



Drug Related Psychiatric Outpatient Mental Disorders Due to the Use of Psychoactive Drugs (excluding alcohol) Western Australia: 2000 - 2006

Introduction

This report summarises annual and quarterly trends in outpatient treatment episodes at both private and public mental health clinics and hospitals in Western Australia (WA) from July 2000 to December 2006.

These episodes involve disorders from within the broad diagnostic group referred to as *Mental and behavioural disorders due to psychoactive substance use*, covered by the ICD-10 codes F10-F19. The ten disorders within this group are all attributable to the use of one or more psychoactive substances, which may or may not have been medically prescribed, of which seven were specifically examined for this study.

As this analysis is primarily concerned with admissions involving the use of illicit drugs such as cannabis, heroin and stimulants (ie amphetamines and methylamphetamine), it excludes the F10 (disorders due to use of alcohol), the F17 (tobacco) and F18 (volatile solvents) diagnostic groups.

This analysis involves a completed occasion of service where a principal diagnosis was that the disorder was due to the use of either opioids (F11), cannabinoids (F12), sedatives or hypnotics (F13), cocaine (F14), other stimulants including caffeine (F15), hallucinogens (F16), or multiple drug use and use of other psychoactive substances (F19).

Overview

Figure 1 (page 2) provides an overview of trends in the proportion for each group of total annual outpatient treatment episodes. (Because of the very small number of episodes for cocaine and hallucinogens these have been combined in the 'other drug' group). *Note: Data for the year 2000 which covers from July to December 2000 has been omitted from this analysis of annual trends.*

Annual trends

Overall, annual episodes increased from 2,432 in 2001 to 3,914 in 2006, an increase of 60.9% over the six year period (Table 1). Over the six year period trends for annual admissions were as follows:

- cannabis increased by 74.0% from 462 in 2001 to 804 in 2006;
- opioids increased by 64.6% from 130 in 2001 to 214 in 2006;
- sedatives/hypnotics increased by nearly four fold from 29 in 2001 to 105 in 2006;
- stimulants increased by 95.9% from 393 in 2001 to 770 in 2006; and
- multiple drugs increased by 42.3% from 1,371 in 2001 to 1,951 in 2006.

Version: June 2007

Table 1
Annual drug related psychiatric outpatient treatment episodes by drug group, 2001 - 2006

	Cannabis (F12)		Opioids (F11)		Sedatives/hypnotics (F13)		Stimulants (F15)		Multiple drugs (F19)		Other drugs (F14, F16)		All drugs
	n	%	n	%	n	%	n	%	n	%	n	%	
2001	462	19.0	130	5.3	29	1.2	393	16.2	1,371	56.4	47	1.9	2,432
2002	551	18.7	155	5.3	65	2.2	483	16.4	1,644	55.9	43	1.5	2,941
2003	584	18.8	148	4.8	74	2.4	565	18.2	1,691	54.4	48	1.5	3,110
2004	615	18.8	179	5.5	69	2.1	655	20.1	1,686	51.7	60	1.8	3,264
2005	727	20.7	181	5.2	67	1.9	632	18.0	1,848	52.7	49	1.4	3,504
2006	804	20.5	214	5.5	105	2.7	770	19.7	1,951	49.8	70	1.8	3,914

Source: Mental Health Information System, Department of Health.

Table 1 also has trends from 2001 to 2006 in the proportion of total annual episodes by diagnostic group, as follows:

- disorders due to cannabis increased from 19.0% to 20.5%;
- disorders due to opioids were relatively constant accounting for one in 20 of all episodes;
- disorders due to sedatives/hypnotics accounted for 2% or less of all episodes;
- disorders due to stimulants increased from 16.2% to 19.7%; and
- disorders due to multiple drugs declined from 56.4% to 49.8%.

Throughout the period from the September quarter 2000 to the December quarter 2006 the majority of episodes involved males who accounted for between two thirds and three quarters of all episodes (Figure 2, page 3).

The quarterly trends from the September quarter 2000 to the December quarter 2006 involving opioids (F11), cannabis (F12) and stimulants (F15) in Figure 3 (page 4) show a similar upward trend in both opioid and cannabis related episodes, whereas opioid related episodes remain relatively constant over the period.

Quarterly trends in episodes involving sedatives/hypnotics (F13), cocaine (F14), hallucinogens (F16) and multiple drugs (F19) are shown in Figure 4 (page 4). It can be seen that the most frequent drug involved the multiple drugs group, which steadily increased from 299 episodes in the September quarter 2000 to 476 in the December quarter 2006.

Compared to the multiple drug group, there were relatively few quarterly episodes involving either the sedatives/hypnotic, hallucinogen or cocaine groups throughout

the period. With respect to the sedative/hypnotic group there has been a moderate growth from mid 2001 up to the present, whereas episodes involving the hallucinogen group remained relatively constant up to mid 2005 and then increased somewhat.

Age and sex characteristics

This section summarises age and sex related patterns with respect to opioid, cannabis, stimulant and multiple drug related disorders. More detailed information for these and other groups is contained in the Appendix of data tables and figures separately available from the Drug and Alcohol Office website.

Opioid disorders (F11)

For most quarters from the September quarter 2000 up to the present there was a greater number of male compared to female episodes. The most frequent age group was the 25 to 34 age group followed by the 15 to 24 and 35 to 44 age groups.

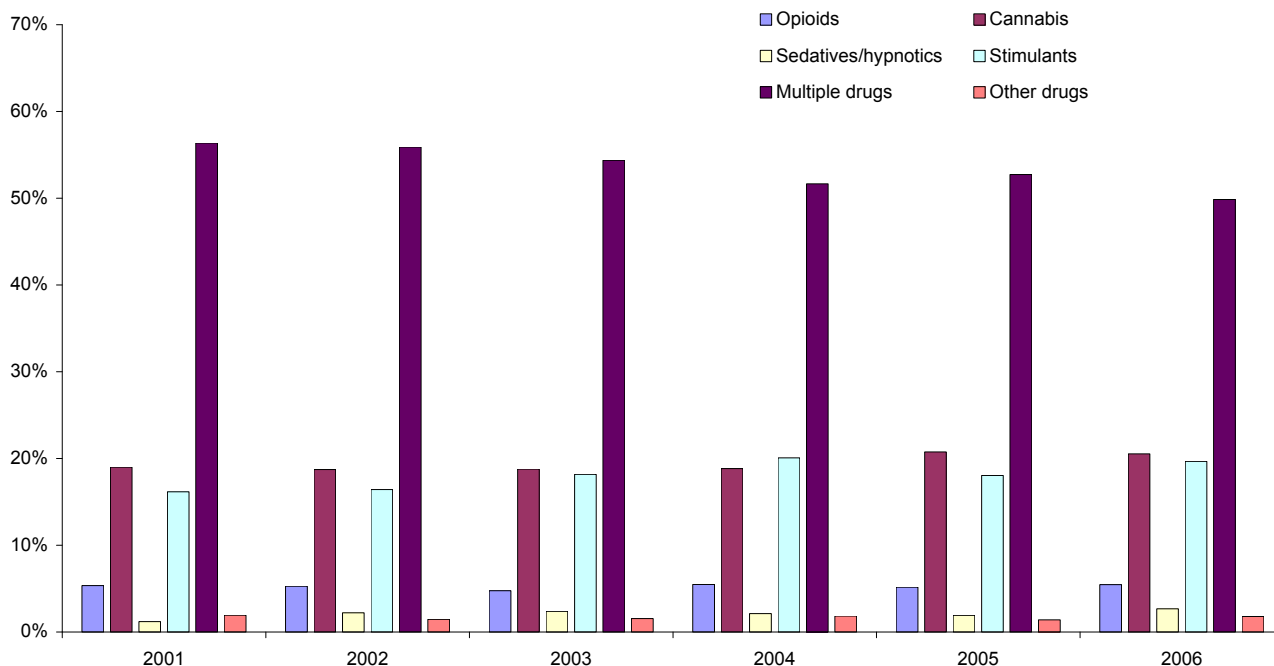
Cannabis disorders (F12)

The greatest proportion of episodes involved males, with about only one in four of all episodes involving females and a consistent pattern for the greatest number of episodes to involve the 15 to 24 age group closely followed by the 25 to 34 age group.

Stimulant disorders (F15)

There was a pattern of more male than female stimulant episodes for all quarters (except for the March quarter 2004), with about two out of three of all episodes involving males.

Figure 1
Proportion (%) annual drug related psychiatric outpatient treatment episodes by drug group 2001 - 2006



From the September quarter 2000 up to the March quarter 2003 the most frequent episodes mostly involved the 15 to 24 age group, however the number of episodes for this age group declined over the remainder of the period relative to the 25 to 34 age group, which steadily increased from early 2003. There was also a slight increase in episodes involving the 35 to 44 age group since early 2005.

Multiple drug disorders (F19)

There was a higher proportion of male than female multiple drug episodes throughout the period from the September quarter 2000 to the December quarter 2006 and that since mid 2003 the most frequent episodes involved the 25 to 34 age group.

Sub diagnostic groups

This section identifies trends within the various sub diagnostic groups for opioid, cannabis, stimulant and multiple drug related disorders. More detailed information for these and other groups is contained in the Appendix of data tables and figures separately available from the Drug and Alcohol Office website.

Opioid disorders (F11.0 - F11.9)

The most frequent type of opioid related episodes for most quarters involved the dependent syndrome (F11.2) sub diagnostic group, with some growth occurring in episodes of this sub diagnostic group since 2003.

Cannabis disorders (F12.0 - F12.9)

Throughout the period there was a dominant pattern that the majority of cannabis related episodes involved the psychotic disorder (F12.5) sub diagnostic group.

However, whilst quarterly episodes involving the acute intoxication, harmful use, dependent syndrome and other diagnoses sub diagnostic groups remained relatively constant over the period, there was a marked increase in episodes involving the psychotic disorder group.

Stimulant disorders (F15.0 - F15.9)

From the September quarter 2000 up to the December quarter 2006 there were relatively few quarterly stimulant related episodes involving acute intoxication, harmful use, dependent syndrome, withdrawal and other diagnoses.

Compared to a pattern of static quarterly episodes involving these sub diagnostic groups, there was a sustained and pronounced quarterly growth in episodes involving the psychotic disorder (F15.5) sub diagnostic group from the September quarter 2000 up to the present.

Multiple drug disorders (F19.0 - F19.9)

With respect to multiple drug related episodes there was a gradual increase in quarterly episodes involving the psychotic disorder (F19.5) sub diagnostic group from the September quarter 2000 to the December quarter 2006.

The second most frequent number of episodes involved the 'other' sub diagnostic group, (ie the F19.3 - F19.4 and F19.6 - F19.9 sub diagnostic groups), which increased from the September quarter 2000 up to mid 2003. They then remained relatively constant up to the end of the period.

Figure 2
Quarterly drug related psychiatric outpatient treatment episodes by sex
September quarter 2000 - December quarter 2006

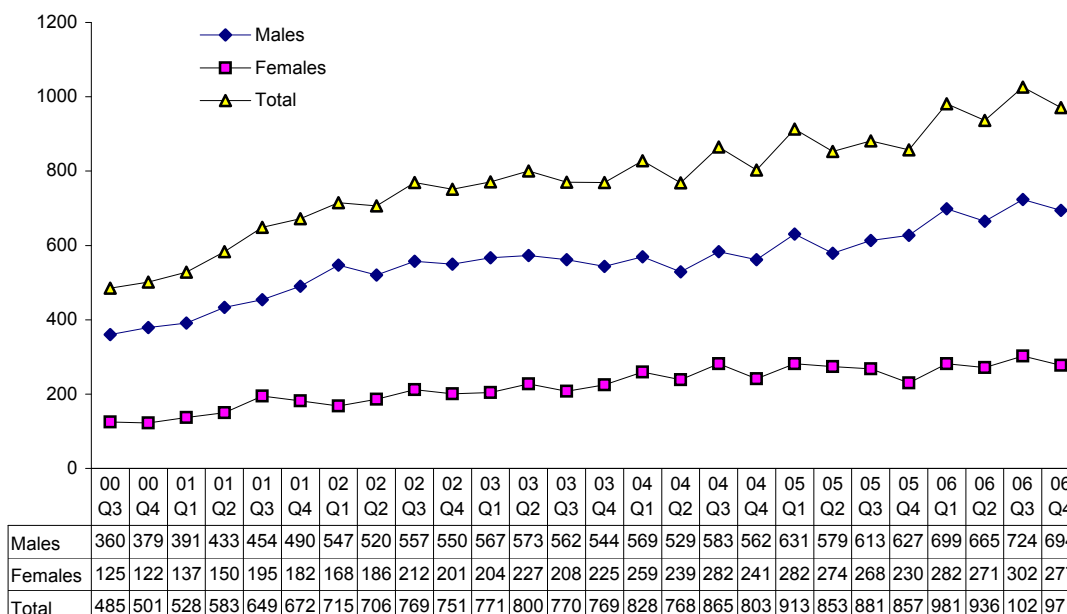


Figure 3
Quarterly drug related psychiatric outpatient treatment episodes - opioids, cannabis & stimulants, September quarter 2000 - December quarter 2006

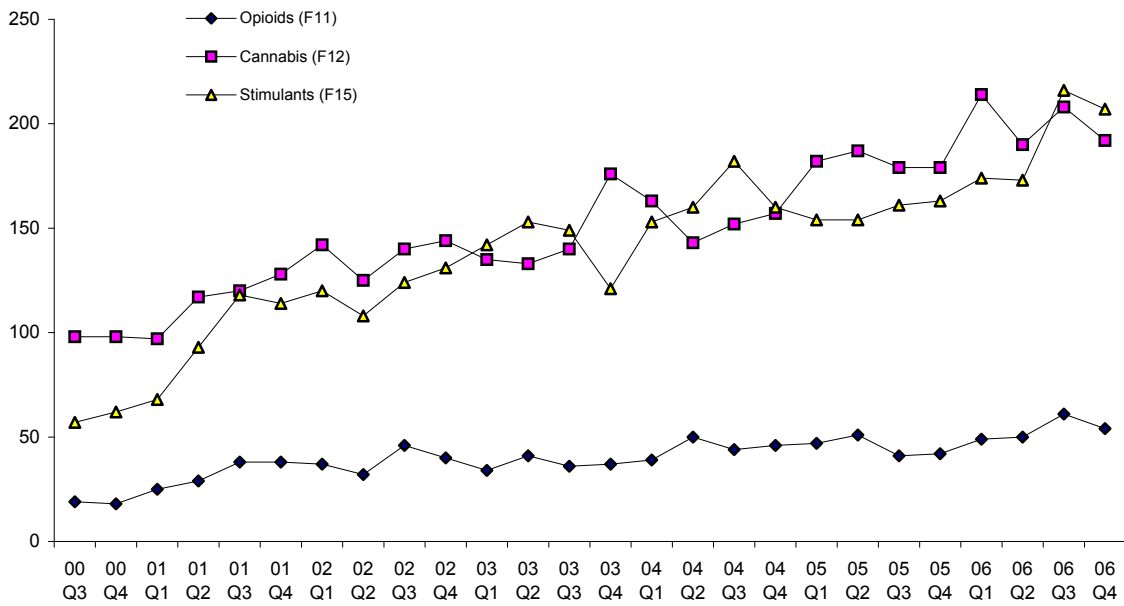
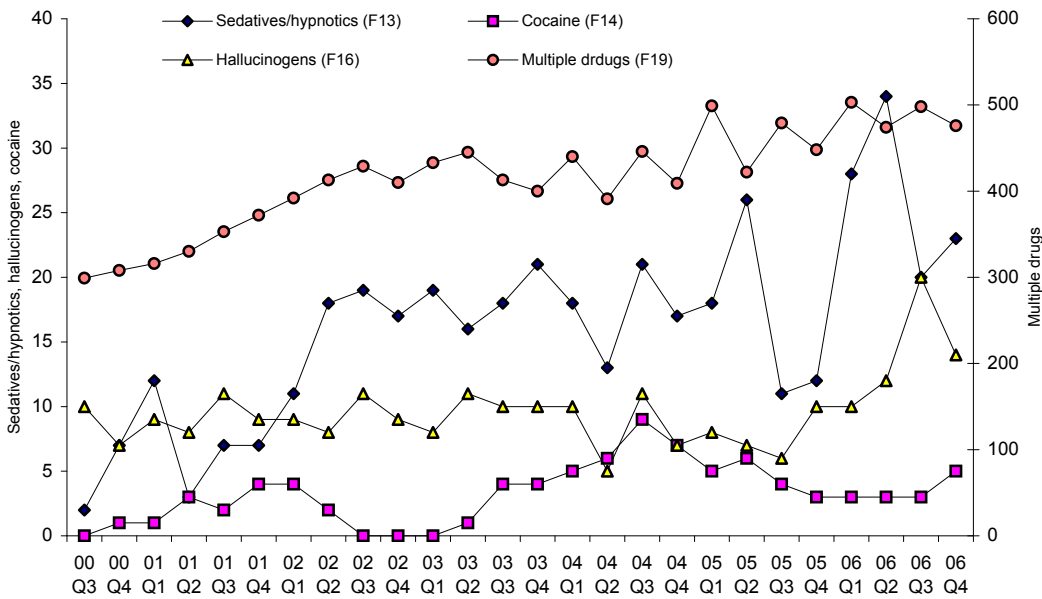


Figure 4
Quarterly drug related psychiatric outpatient treatment episodes - sedatives/hypnotics, hallucinogens, cocaine & multiple drugs, September quarter 2000 - December quarter 2006



This bulletin was jointly published by the Drug and Alcohol Office and the Mental Health Information System of the Department of Health.

To view or download detailed data tables and figures and a description of the methodology associated with this report go to the Drug and Alcohol Office website here.

This publication is available online at <http://www.dao.health.wa.gov.au>

Data Tables & Figures: Drug Related Psychiatric Outpatient Mental Disorders, WA: 2000 - 2006

Table A-1
Annual drug related outpatient treatment episodes by drug group & sex, 2000 - 2006

	Cannabis	Opioids	Sedatives/ hypnotics	Stimulants	Multiple drugs	Other drugs	All drugs
Males							
2000 (July-Dec)	146	23	5	72	477	16	739
2001	361	75	7	227	1,063	35	1,768
2002	414	78	31	315	1,298	38	2,174
2003	480	93	28	348	1,252	45	2,246
2004	507	109	22	369	1,188	48	2,243
2005	526	116	24	397	1,343	44	2,450
2006	635	137	50	526	1,367	67	2,782
Females							
2000 (July-Dec)	50	14	4	47	130	2	247
2001	101	55	22	166	308	12	664
2002	137	77	34	168	346	5	767
2003	104	55	46	217	439	3	864
2004	108	70	47	286	498	12	1,021
2005	201	65	43	235	505	5	1,054
2006	169	77	55	244	584	3	1,132
Persons							
2000 (July-Dec)	196	37	9	119	607	18	986
2001	462	130	29	393	1,371	47	2,432
2002	551	155	65	483	1,644	43	2,941
2003	584	148	74	565	1,691	48	3,110
2004	615	179	69	655	1,686	60	3,264
2005	727	181	67	632	1,848	49	3,504
2006	804	214	105	770	1,951	70	3,914
(per cent row)							
Males							
2000 (July-Dec)	19.8	3.1	0.7	9.7	64.5	2.2	100.0
2001	20.4	4.2	0.4	12.8	60.1	2.0	100.0
2002	19.0	3.6	1.4	14.5	59.7	1.7	100.0
2003	21.4	4.1	1.2	15.5	55.7	2.0	100.0
2004	22.6	4.9	1.0	16.5	53.0	2.1	100.0
2005	21.5	4.7	1.0	16.2	54.8	1.8	100.0
2006	22.8	4.9	1.8	18.9	49.1	2.4	100.0
Females							
2000 (July-Dec)	20.2	5.7	1.6	19.0	52.6	0.8	100.0
2001	15.2	8.3	3.3	25.0	46.4	1.8	100.0
2002	17.9	10.0	4.4	21.9	45.1	0.7	100.0
2003	12.0	6.4	5.3	25.1	50.8	0.3	100.0
2004	10.6	6.9	4.6	28.0	48.8	1.2	100.0
2005	19.1	6.2	4.1	22.3	47.9	0.5	100.0
2006	14.9	6.8	4.9	21.6	51.6	0.3	100.0

Source: Mental Health Information System, Department of Health.

Note: Other drugs includes cocaine and hallucinogens.

Data Tables & Figures: Opioid Related Mental Disorders

Figure A-1
Quarterly opioid related outpatient treatment episodes by sex
September quarter 2000 - December quarter 2006

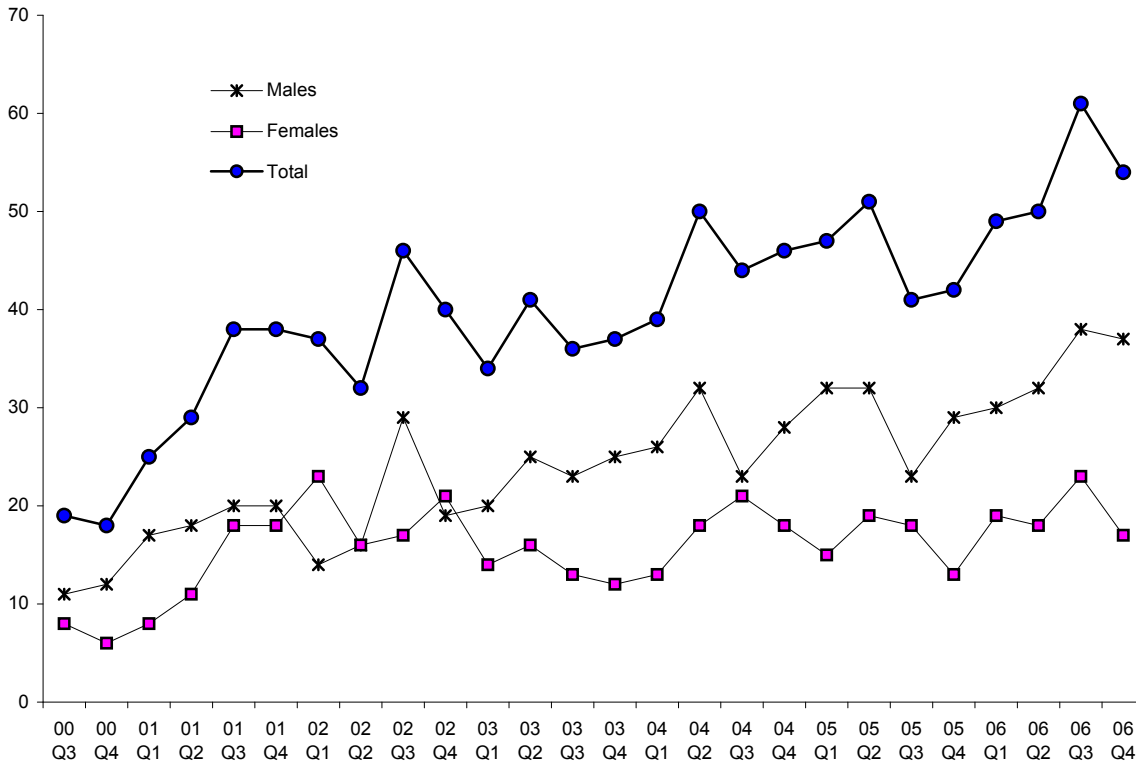
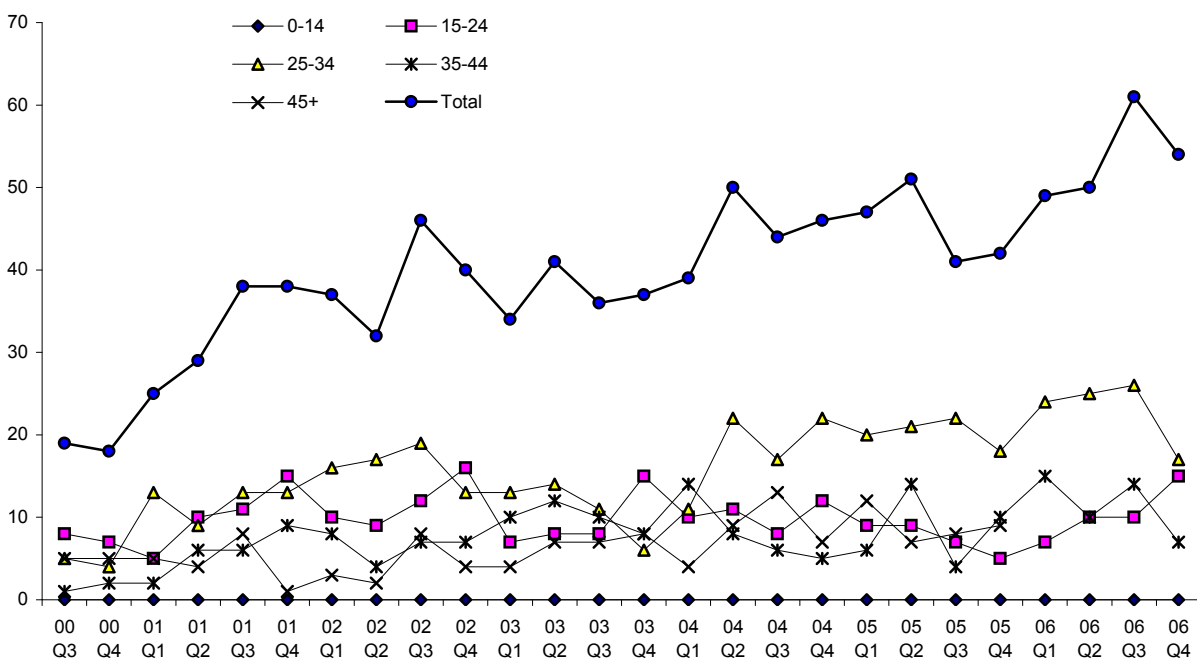
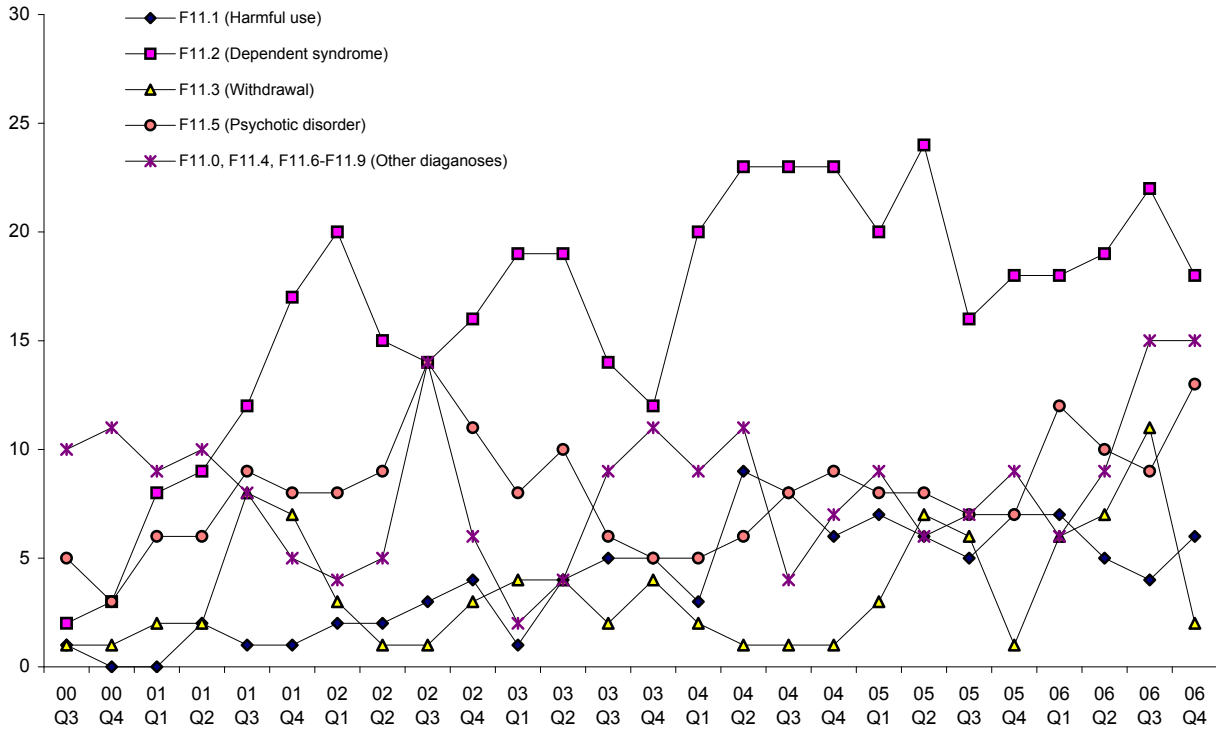


Figure A-2
Quarterly opioid related outpatient treatment episodes by age group
September quarter 2000 - December quarter 2006



Data Tables & Figures: Opioid Related Mental Disorders

Figure A-3
Quarterly opioid related outpatient treatment episodes by sub diagnostic group
September quarter 2000 - December quarter 2006



Data Tables & Figures: Opioid Related Mental Disorders

Table A-2
Quarterly opioid related psychiatric outpatient treatment episodes by
sub diagnostic group, September quarter 2000 - December quarter 2006

	Harmful use (F11.1)	Dependent syndrome (F11.2)	Withdrawal (F11.3)	Psychotic disorder (F11.5)	Other diagnoses (F11.0, F11.4, F11.6-F11.9)	Total
2000						
Qtr 3	1	2	1	5	10	19
Qtr 4	-	3	1	3	11	18
Total	1	5	2	8	21	37
2001						
Qtr 1	-	8	2	6	9	25
Qtr 2	2	9	2	6	10	29
Qtr 3	1	12	8	9	8	38
Qtr 4	1	17	7	8	5	38
Total	4	46	19	29	32	130
2002						
Qtr 1	2	20	3	8	4	37
Qtr 2	2	15	1	9	5	32
Qtr 3	3	14	1	14	14	46
Qtr 4	4	16	3	11	6	40
Total	11	65	8	42	29	155
2003						
Qtr 1	1	19	4	8	2	34
Qtr 2	4	19	4	10	4	41
Qtr 3	5	14	2	6	9	36
Qtr 4	5	12	4	5	11	37
Total	15	64	14	29	26	148
2004						
Qtr 1	3	20	2	5	9	39
Qtr 2	9	23	1	6	11	50
Qtr 3	8	23	1	8	4	44
Qtr 4	6	23	1	9	7	46
Total	26	89	5	28	31	179
2005						
Qtr 1	7	20	3	8	9	47
Qtr 2	6	24	7	8	6	51
Qtr 3	5	16	6	7	7	41
Qtr 4	7	18	1	7	9	42
Total	25	78	17	30	31	181
2006						
Qtr 1	7	18	6	12	6	49
Qtr 2	5	19	7	10	9	50
Qtr 3	4	22	11	9	15	61
Qtr 4	6	18	2	13	15	54
Total	22	77	26	44	45	214

Source: Mental Health Information System, Department of Health.

Data Tables & Figures: Opioid Related Mental Disorders

Table A-3
Quarterly opioid related outpatient treatment episodes by age group, September quarter 2000 - December quarter 2006: males

	<15	15-24	25-34	35-44	45+	Total
2000						
Qtr 3	-	3	2	1	5	11
Qtr 4	-	4	4	1	3	12
Total	-	7	6	2	8	23
2001						
Qtr 1	-	2	11	1	3	17
Qtr 2	-	5	7	3	3	18
Qtr 3	-	7	6	1	6	20
Qtr 4	-	7	7	6	-	20
Total	-	21	31	11	12	75
2002						
Qtr 1	-	6	5	2	1	14
Qtr 2	-	5	9	1	1	16
Qtr 3	-	9	11	4	5	29
Qtr 4	-	8	8	2	1	19
Total	-	28	33	9	8	78
2003						
Qtr 1	-	3	10	4	3	20
Qtr 2	-	4	9	5	7	25
Qtr 3	-	4	7	6	6	23
Qtr 4	-	10	5	2	8	25
Total	-	21	31	17	24	93
2004						
Qtr 1	-	6	7	9	4	26
Qtr 2	-	6	13	5	8	32
Qtr 3	-	1	11	3	8	23
Qtr 4	-	6	11	4	7	28
Total	-	19	42	21	27	109
2005						
Qtr 1	-	2	14	4	12	32
Qtr 2	-	5	9	12	6	32
Qtr 3	-	2	10	4	7	23
Qtr 4	-	2	10	10	7	29
Total	-	11	43	30	32	116
2006						
Qtr 1	-	4	16	7	3	30
Qtr 2	-	6	16	7	3	32
Qtr 3	-	8	15	9	6	38
Qtr 4	-	11	5	7	14	37
Total	-	29	52	30	26	137

Source: Mental Health Information System, Department of Health.

Table A-4
Quarterly opioid related outpatient treatment episodes by age group, September quarter 2000 - December quarter 2006: females

	<15	15-24	25-34	35-44	45+	Total
2000						
Qtr 3	-	5	3	-	-	8
Qtr 4	-	3	-	1	2	6
Total	-	8	3	1	2	14
2001						
Qtr 1	-	3	2	1	2	8
Qtr 2	-	5	2	3	1	11
Qtr 3	-	4	7	5	2	18
Qtr 4	-	8	6	3	1	18
Total	-	20	17	12	6	55
2002						
Qtr 1	-	4	11	6	2	23
Qtr 2	-	4	8	3	1	16
Qtr 3	-	3	8	3	3	17
Qtr 4	-	8	5	5	3	21
Total	-	19	32	17	9	77
2003						
Qtr 1	-	4	3	6	1	14
Qtr 2	-	4	5	7	-	16
Qtr 3	-	4	4	4	1	13
Qtr 4	-	5	1	6	-	12
Total	-	17	13	23	2	55
2004						
Qtr 1	-	4	4	5	-	13
Qtr 2	-	5	9	3	1	18
Qtr 3	-	7	6	3	5	21
Qtr 4	-	6	11	1	0	18
Total	-	22	30	12	6	70
2005						
Qtr 1	-	7	6	2	-	15
Qtr 2	-	4	12	2	1	19
Qtr 3	-	5	12	-	1	18
Qtr 4	-	3	8	-	2	13
Total	-	19	38	4	4	65
2006						
Qtr 1	-	3	8	8	-	19
Qtr 2	-	4	9	3	2	18
Qtr 3	-	2	11	5	5	23
Qtr 4	-	4	12	-	1	17
Total	-	13	40	16	8	77

Source: Mental Health Information System, Department of Health.

Data Tables & Figures: Opioid Related Mental Disorders

Table A-5
Quarterly opioid related outpatient treatment
episodes by age group, September quarter
2000 - December quarter 2006: persons

	<15	15-24	25-34	35-44	45+	Total
2000						
Qtr 3	-	8	5	1	5	19
Qtr 4	-	7	4	2	5	18
Total	-	15	9	3	10	37
2001						
Qtr 1	-	5	13	2	5	25
Qtr 2	-	10	9	6	4	29
Qtr 3	-	11	13	6	8	38
Qtr 4	-	15	13	9	1	38
Total	-	41	48	23	18	130
2002						
Qtr 1	-	10	16	8	3	37
Qtr 2	-	9	17	4	2	32
Qtr 3	-	12	19	7	8	46
Qtr 4	-	16	13	7	4	40
Total	-	47	65	26	17	155
2003						
Qtr 1	-	7	13	10	4	34
Qtr 2	-	8	14	12	7	41
Qtr 3	-	8	11	10	7	36
Qtr 4	-	15	6	8	8	37
Total	-	38	44	40	26	148
2004						
Qtr 1	-	10	11	14	4	39
Qtr 2	-	11	22	8	9	50
Qtr 3	-	8	17	6	13	44
Qtr 4	-	12	22	5	7	46
Total	-	41	72	33	33	179
2005						
Qtr 1	-	9	20	6	12	47
Qtr 2	-	9	21	14	7	51
Qtr 3	-	7	22	4	8	41
Qtr 4	-	5	18	10	9	42
Total	-	30	81	34	36	181
2006						
Qtr 1	-	7	24	15	3	49
Qtr 2	-	10	25	10	5	50
Qtr 3	-	10	26	14	11	61
Qtr 4	-	15	17	7	15	54
Total	-	42	92	46	34	214

Source: Mental Health Information System, Department of Health.

Data Tables & Figures: Cannabis Related Mental Disorders

Figure A-4
Quarterly cannabis related outpatient treatment episodes by sex
September quarter 2000 - December quarter 2006

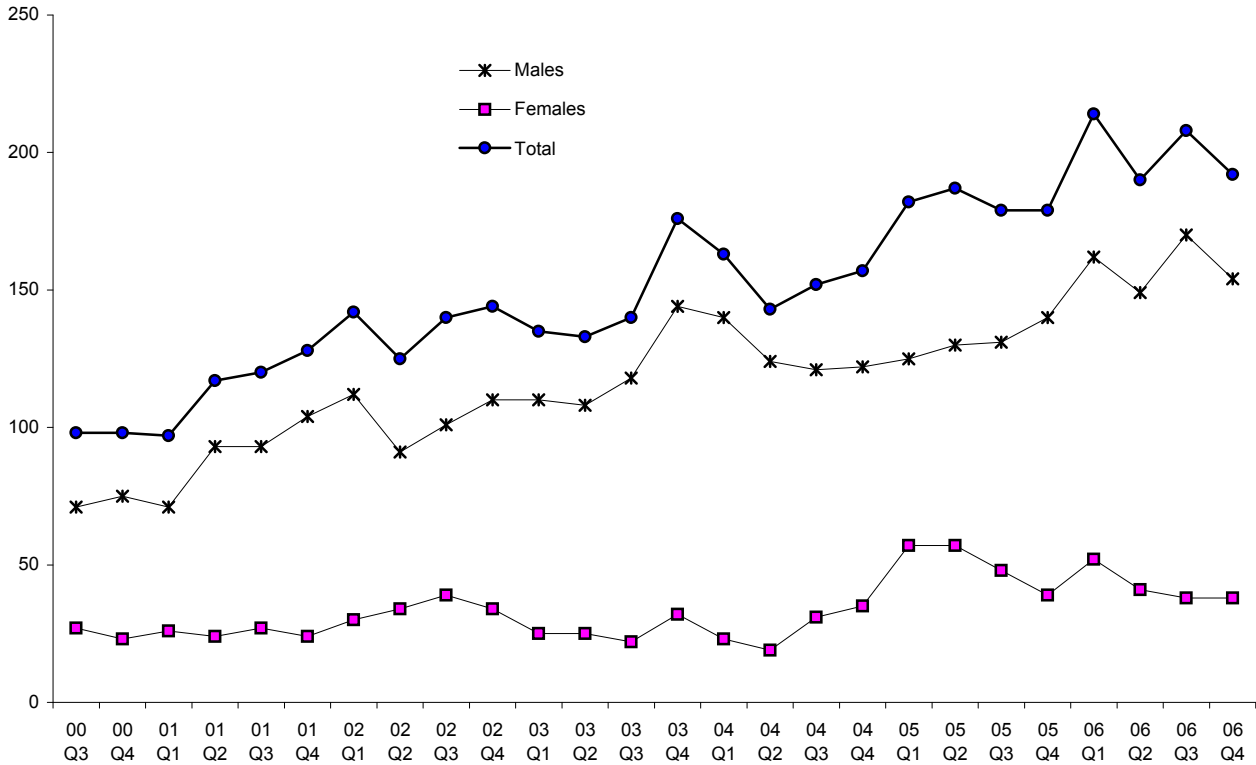
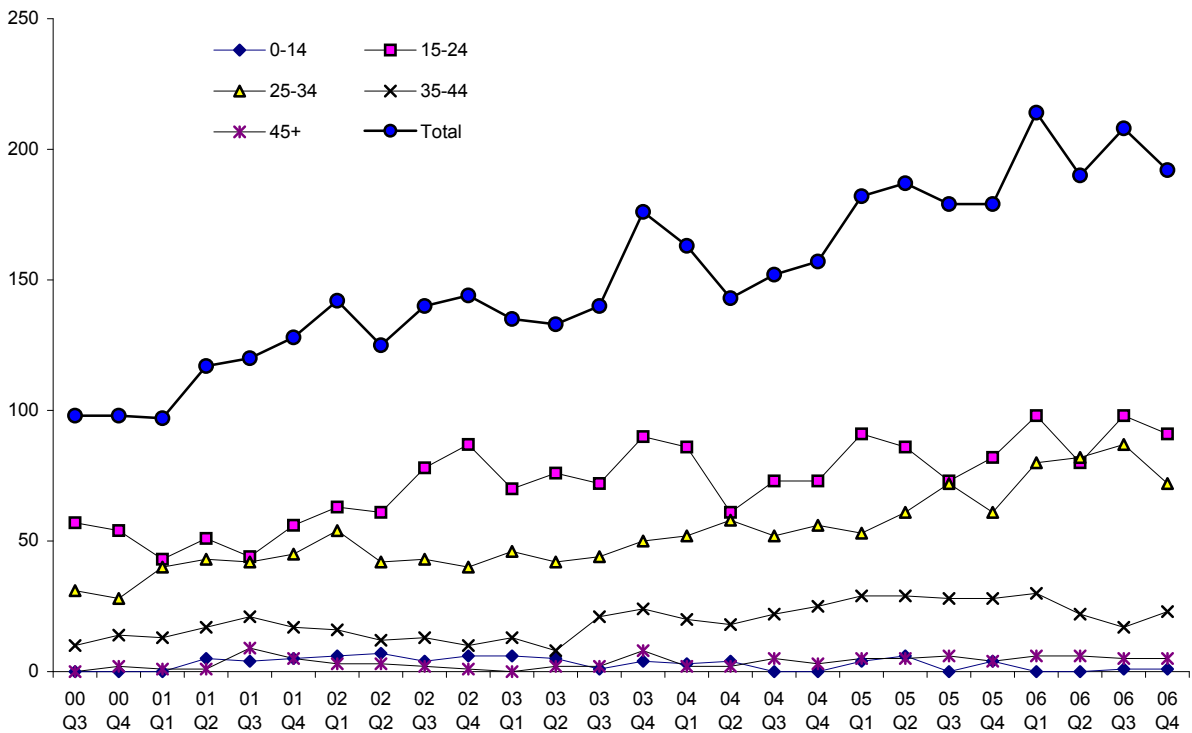
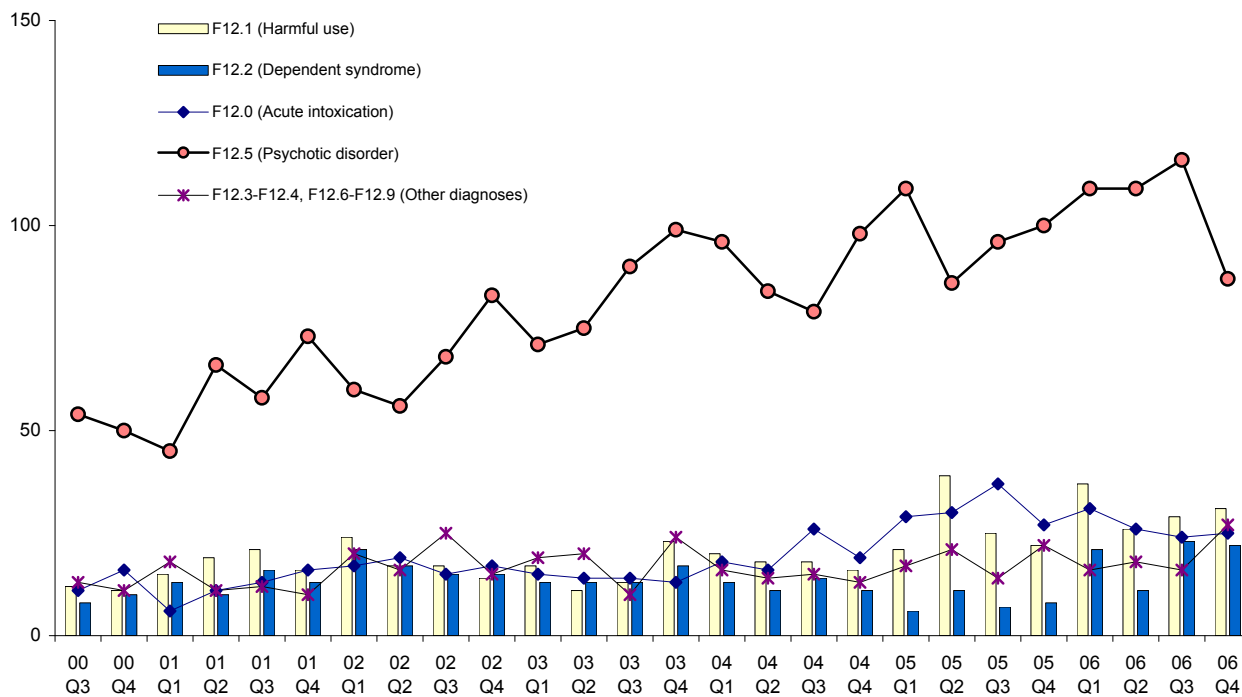


Figure A-5
Quarterly cannabis related outpatient treatment episodes by age group
September quarter 2000 - December quarter 2006



Data Tables & Figures: Cannabis Related Mental Disorders

Figure A-6
Quarterly cannabis related outpatient treatment episodes by sub diagnostic group
September quarter 2000 - December quarter 2006



Data Tables & Figures: Cannabis Related Mental Disorders

Table A-6
Quarterly cannabis related psychiatric outpatient treatment episodes by
sub diagnostic group, September quarter 2000 - December quarter 2006

	Acute intoxication (F12.0)	Harmful use (F12.1)	Dependent syndrome (F12.2)	Psychotic disorder (F12.5)	Other diagnoses (F12.3-F12.4, F12.6-F12.9)	Total
2000						
Qtr 3	11	12	8	54	13	98
Qtr 4	16	11	10	50	11	98
Total	27	23	18	104	24	196
2001						
Qtr 1	6	15	13	45	18	97
Qtr 2	11	19	10	66	11	117
Qtr 3	13	21	16	58	12	120
Qtr 4	16	16	13	73	10	128
Total	46	71	52	242	51	462
2002						
Qtr 1	17	24	21	60	20	142
Qtr 2	19	17	17	56	16	125
Qtr 3	15	17	15	68	25	140
Qtr 4	17	14	15	83	15	144
Total	68	72	68	267	76	551
2003						
Qtr 1	15	17	13	71	19	135
Qtr 2	14	11	13	75	20	133
Qtr 3	14	13	13	90	10	140
Qtr 4	13	23	17	99	24	176
Total	56	64	56	335	73	584
2004						
Qtr 1	18	20	13	96	16	163
Qtr 2	16	18	11	84	14	143
Qtr 3	26	18	14	79	15	152
Qtr 4	19	16	11	98	13	157
Total	79	72	49	357	58	615
2005						
Qtr 1	29	21	6	109	17	182
Qtr 2	30	39	11	86	21	187
Qtr 3	37	25	7	96	14	179
Qtr 4	27	22	8	100	22	179
Total	123	107	32	391	74	727
2006						
Qtr 1	31	37	21	109	16	214
Qtr 2	26	26	11	109	18	190
Qtr 3	24	29	23	116	16	208
Qtr 4	25	31	22	87	27	192
Total	106	123	77	421	77	804

Source: Mental Health Information System, Department of Health.

Data Tables & Figures: Cannabis Related Mental Disorders

Table A-7
Quarterly cannabis related outpatient treatment episodes by age group, September quarter 2000 - December quarter 2006: males

	<15	15-24	25-34	35-44	45+	Total
2000						
Qtr 3	-	45	20	6	-	71
Qtr 4	-	40	24	10	1	75
Total	-	85	44	16	1	146
2001						
Qtr 1	-	30	30	10	1	71
Qtr 2	5	43	31	13	1	93
Qtr 3	4	40	31	12	6	93
Qtr 4	5	50	36	9	4	104
Total	14	163	128	44	12	361
2002						
Qtr 1	6	58	36	9	3	112
Qtr 2	7	52	22	8	2	91
Qtr 3	4	61	30	4	2	101
Qtr 4	6	69	28	7	-	110
Total	23	240	116	28	7	414
2003						
Qtr 1	6	57	43	4	-	110
Qtr 2	5	61	39	1	2	108
Qtr 3	-	63	41	12	2	118
Qtr 4	2	78	45	15	4	144
Total	13	259	168	32	8	480
2004						
Qtr 1	-	79	48	11	2	140
Qtr 2	3	55	53	11	2	124
Qtr 3	-	62	48	8	3	121
Qtr 4	-	60	51	8	3	122
Total	3	256	200	38	10	507
2005						
Qtr 1	1	65	44	12	3	125
Qtr 2	2	65	48	10	5	130
Qtr 3	-	52	61	12	6	131
Qtr 4	4	63	53	16	4	140
Total	7	245	206	50	18	526
2006						
Qtr 1	-	78	60	19	5	162
Qtr 2	-	64	64	16	5	149
Qtr 3	-	82	71	13	4	170
Qtr 4	-	77	58	16	3	154
Total	-	301	253	64	17	635

Source: Mental Health Information System, Department of Health.

Table A-8
Quarterly cannabis related outpatient treatment episodes by age group, September quarter 2000 - December quarter 2006: females

	<15	15-24	25-34	35-44	45+	Total
2000						
Qtr 3	-	12	11	4	-	27
Qtr 4	-	14	4	4	1	23
Total	-	26	15	8	1	50
2001						
Qtr 1	-	13	10	3	-	26
Qtr 2	-	8	12	4	-	24
Qtr 3	-	4	11	9	3	27
Qtr 4	-	6	9	8	1	24
Total	-	31	42	24	4	101
2002						
Qtr 1	-	5	18	7	-	30
Qtr 2	-	9	20	4	1	34
Qtr 3	-	17	13	9	-	39
Qtr 4	-	18	12	3	1	34
Total	-	49	63	23	2	137
2003						
Qtr 1	-	13	3	9	-	25
Qtr 2	-	15	3	7	-	25
Qtr 3	1	9	3	9	-	22
Qtr 4	2	12	5	9	4	32
Total	3	49	14	34	4	104
2004						
Qtr 1	3	7	4	9	-	23
Qtr 2	1	6	5	7	-	19
Qtr 3	-	11	4	14	2	31
Qtr 4	-	13	5	17	-	35
Total	4	37	18	47	2	108
2005						
Qtr 1	3	26	9	17	2	57
Qtr 2	4	21	13	19	-	57
Qtr 3	-	21	11	16	-	48
Qtr 4	-	19	8	12	-	39
Total	7	87	41	64	2	201
2006						
Qtr 1	-	20	20	11	1	52
Qtr 2	-	16	18	6	1	41
Qtr 3	1	16	16	4	1	38
Qtr 4	1	14	14	7	2	38
Total	2	66	68	28	5	169

Source: Mental Health Information System, Department of Health.

Data Tables & Figures: Cannabis Related Mental Disorders

Table A-9
Quarterly cannabis related outpatient treatment
episodes by age group, September quarter
2000 - December quarter 2006: persons

	<15	15-24	25-34	35-44	45+	Total
2000						
Qtr 3	-	57	31	10	-	98
Qtr 4	-	54	28	14	2	98
Total	-	111	59	24	2	196
2001						
Qtr 1	-	43	40	13	1	97
Qtr 2	5	51	43	17	1	117
Qtr 3	4	44	42	21	9	120
Qtr 4	5	56	45	17	5	128
Total	14	194	170	68	16	462
2002						
Qtr 1	6	63	54	16	3	142
Qtr 2	7	61	42	12	3	125
Qtr 3	4	78	43	13	2	140
Qtr 4	6	87	40	10	1	144
Total	23	289	179	51	9	551
2003						
Qtr 1	6	70	46	13	-	135
Qtr 2	5	76	42	8	2	133
Qtr 3	1	72	44	21	2	140
Qtr 4	4	90	50	24	8	176
Total	16	308	182	66	12	584
2004						
Qtr 1	3	86	52	20	2	163
Qtr 2	4	61	58	18	2	143
Qtr 3	-	73	52	22	5	152
Qtr 4	-	73	56	25	3	157
Total	7	293	218	85	12	615
2005						
Qtr 1	4	91	53	29	5	182
Qtr 2	6	86	61	29	5	187
Qtr 3	-	73	72	28	6	179
Qtr 4	4	82	61	28	4	179
Total	14	332	247	114	20	727
2006						
Qtr 1	-	98	80	30	6	214
Qtr 2	-	80	82	22	6	190
Qtr 3	1	98	87	17	5	208
Qtr 4	1	91	72	23	5	192
Total	2	367	321	92	22	804

Source: Mental Health Information System, Department of Health.

Data Tables & Figures: Stimulant Related Mental Disorders

Figure A-7
 Quarterly stimulant related outpatient treatment episodes by sex
 September quarter 2000 - December quarter 2006

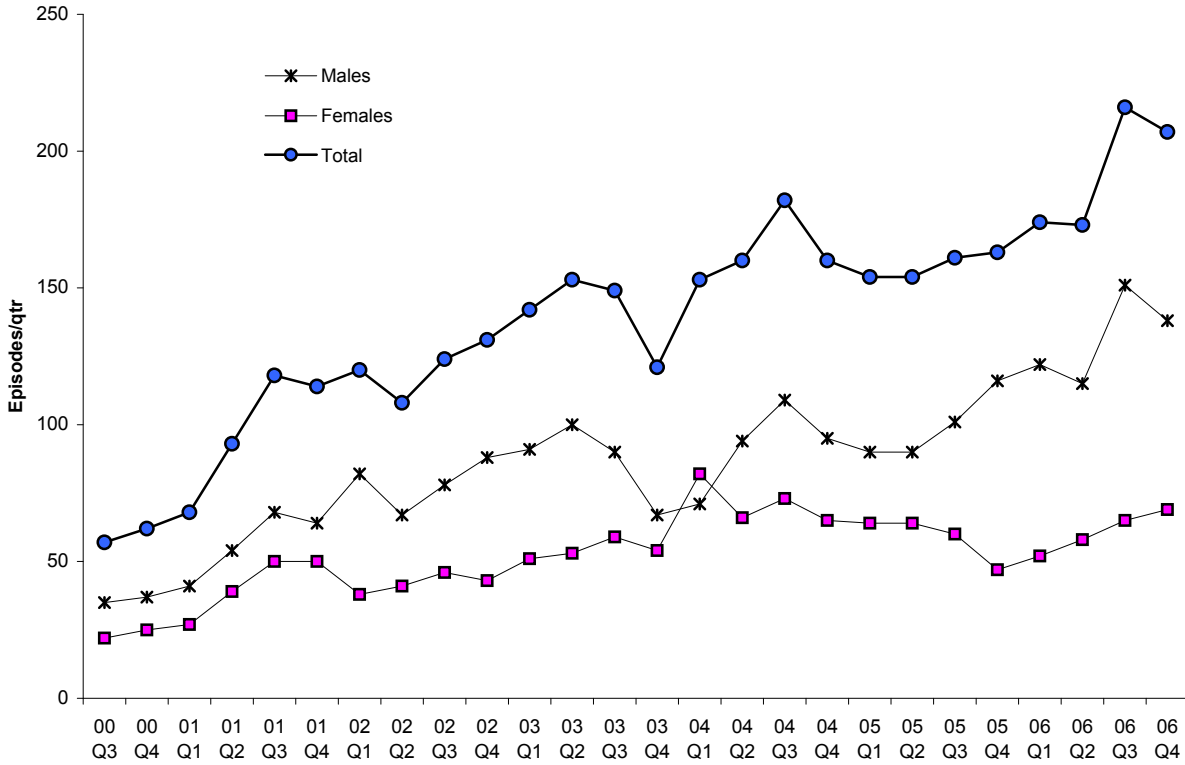
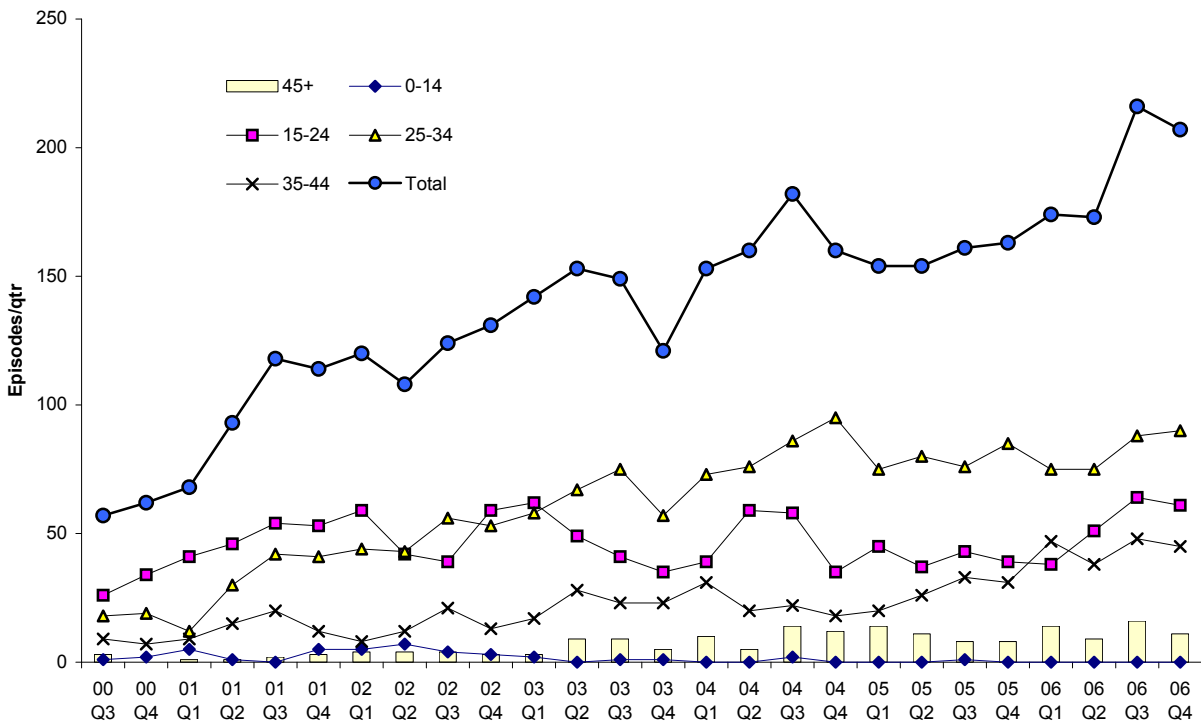
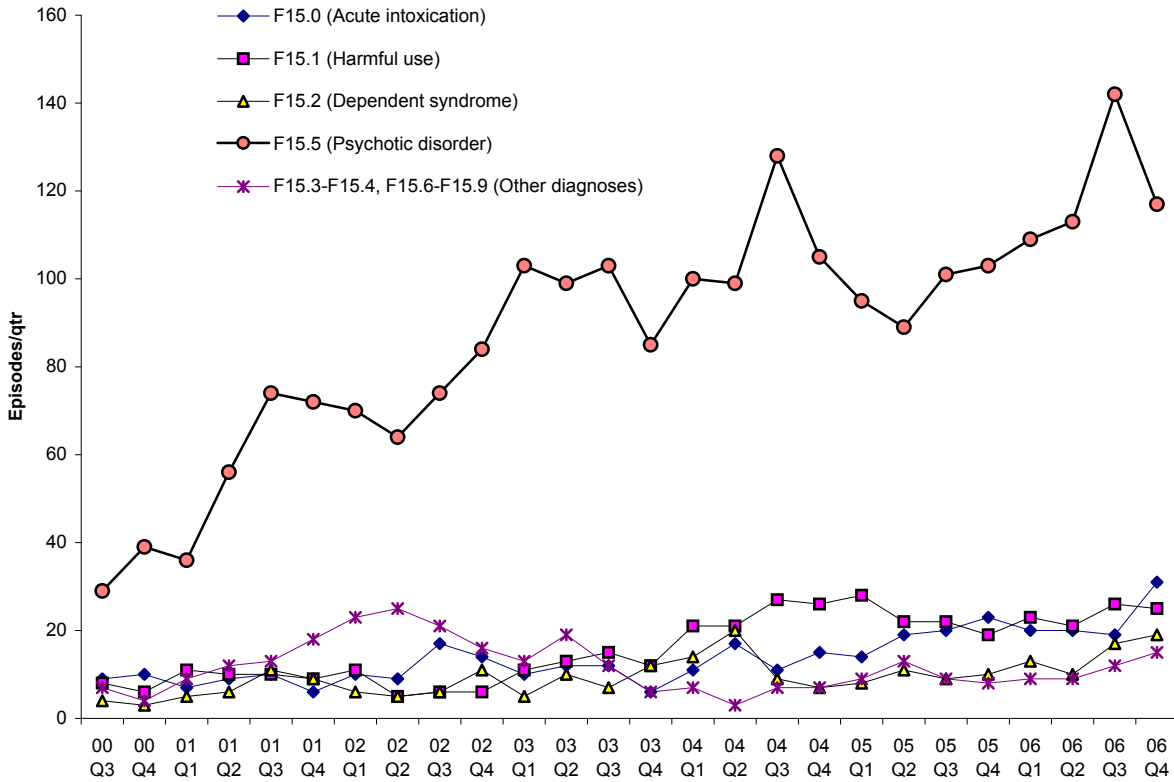


Figure A-8
 Quarterly stimulant related outpatient treatment episodes by age group
 September quarter 2000 - December quarter 2006



Data Tables & Figures: Stimulant Related Mental Disorders

Figure A-9
Quarterly stimulant related outpatient treatment episodes by sub diagnostic group
September quarter 2000 - December quarter 2006



Data Tables & Figures: Stimulant Related Mental Disorders

Table A-10
Quarterly stimulant related psychiatric outpatient treatment episodes by
diagnostic group, September quarter 2000 - December quarter 2006

	Acute intoxication (F15.0)	Harmful use (F15.1)	Dependent syndrome (F15.2)	Psychotic disorder (F15.5)	Other diagnoses (F15.3-F15.4, F15.6-F15.9)	Total
2000						
Qtr 3	9	8	4	29	7	57
Qtr 4	10	6	3	39	4	62
Total	19	14	7	68	11	119
2001						
Qtr 1	7	11	5	36	9	68
Qtr 2	9	10	6	56	12	93
Qtr 3	10	10	11	74	13	118
Qtr 4	6	9	9	72	18	114
Total	32	40	31	238	52	393
2002						
Qtr 1	10	11	6	70	23	120
Qtr 2	9	5	5	64	25	108
Qtr 3	17	6	6	74	21	124
Qtr 4	14	6	11	84	16	131
Total	50	28	28	292	85	483
2003						
Qtr 1	10	11	5	103	13	142
Qtr 2	12	13	10	99	19	153
Qtr 3	12	15	7	103	12	149
Qtr 4	6	12	12	85	6	121
Total	40	51	34	390	50	565
2004						
Qtr 1	11	21	14	100	7	153
Qtr 2	17	21	20	99	3	160
Qtr 3	11	27	9	128	7	182
Qtr 4	15	26	7	105	7	160
Total	54	95	50	432	24	655
2005						
Qtr 1	14	28	8	95	9	154
Qtr 2	19	22	11	89	13	154
Qtr 3	20	22	9	101	9	161
Qtr 4	23	19	10	103	8	163
Total	76	91	38	388	39	632
2006						
Qtr 1	20	23	13	109	9	174
Qtr 2	20	21	10	113	9	173
Qtr 3	19	26	17	142	12	216
Qtr 4	31	25	19	117	15	207
Total	90	95	59	481	45	770

Source: Mental Health Information System, Department of Health.

Data Tables & Figures: Stimulant Related Mental Disorders

Table A-11
Quarterly stimulant related outpatient treatment episodes by age group, September quarter 2000 - December quarter 2006: males

	<15	15-24	25-34	35-44	45+	Total
2000						
Qtr 3	1	16	13	5	-	35
Qtr 4	2	19	12	4	-	37
Total	3	35	25	9	-	72
2001						
Qtr 1	5	23	6	7	-	41
Qtr 2	1	26	20	7	-	54
Qtr 3	-	43	18	7	-	68
Qtr 4	4	34	25	1	-	64
Total	10	126	69	22	-	227
2002						
Qtr 1	3	40	32	3	4	82
Qtr 2	6	28	24	6	3	67
Qtr 3	4	25	36	9	4	78
Qtr 4	3	39	39	4	3	88
Total	16	132	131	22	14	315
2003						
Qtr 1	2	43	36	8	2	91
Qtr 2	-	36	44	19	1	100
Qtr 3	1	31	37	17	4	90
Qtr 4	1	26	25	12	3	67
Total	4	136	142	56	10	348
2004						
Qtr 1	-	23	31	12	5	71
Qtr 2	-	43	44	4	3	94
Qtr 3	-	41	54	8	6	109
Qtr 4	-	24	61	6	4	95
Total	-	131	190	30	18	369
2005						
Qtr 1	-	29	49	6	6	90
Qtr 2	-	29	50	9	2	90
Qtr 3	-	35	47	15	4	101
Qtr 4	-	33	56	20	7	116
Total	-	126	202	50	19	397
2006						
Qtr 1	-	33	50	31	8	122
Qtr 2	-	39	52	19	5	115
Qtr 3	-	52	60	28	11	151
Qtr 4	-	38	63	29	8	138
Total	-	162	225	107	32	526

Source: Mental Health Information System, Department of Health.

Table A-12
Quarterly stimulant related outpatient treatment episodes by age group, September quarter 2000 - December quarter 2006: females

	<15	15-24	25-34	35-44	45+	Total
2000						
Qtr 3	-	10	5	4	3	22
Qtr 4	-	15	7	3	-	25
Total	-	25	12	7	3	47
2001						
Qtr 1	-	18	6	2	1	27
Qtr 2	-	20	10	8	1	39
Qtr 3	-	11	24	13	2	50
Qtr 4	1	19	16	11	3	50
Total	1	68	56	34	7	166
2002						
Qtr 1	2	19	12	5	-	38
Qtr 2	1	14	19	6	1	41
Qtr 3	-	14	20	12	-	46
Qtr 4	-	20	14	9	-	43
Total	3	67	65	32	1	168
2003						
Qtr 1	-	19	22	9	1	51
Qtr 2	-	13	23	9	8	53
Qtr 3	-	10	38	6	5	59
Qtr 4	-	9	32	11	2	54
Total	-	51	115	35	16	217
2004						
Qtr 1	-	16	42	19	5	82
Qtr 2	-	16	32	16	2	66
Qtr 3	2	17	32	14	8	73
Qtr 4	-	11	34	12	8	65
Total	2	60	140	61	23	286
2005						
Qtr 1	-	16	26	14	8	64
Qtr 2	-	8	30	17	9	64
Qtr 3	1	8	29	18	4	60
Qtr 4	-	6	29	11	1	47
Total	1	38	114	60	22	236
2006						
Qtr 1	-	5	25	16	6	52
Qtr 2	-	12	23	19	4	58
Qtr 3	-	12	28	20	5	65
Qtr 4	-	23	27	16	3	69
Total	-	52	103	71	18	244

Source: Mental Health Information System, Department of Health.

Data Tables & Figures: Stimulant Related Mental Disorders

Table A-13
Quarterly stimulant related outpatient treatment
episodes by age group, September quarter
2000 - December quarter 2006: persons

	<15	15-24	25-34	35-44	45+	Total
2000						
Qtr 3	1	26	18	9	3	57
Qtr 4	2	34	19	7	-	62
Total	3	60	37	16	3	119
2001						
Qtr 1	5	41	12	9	1	68
Qtr 2	1	46	30	15	1	93
Qtr 3	-	54	42	20	2	118
Qtr 4	5	53	41	12	3	114
Total	11	194	125	56		393
2002					7	
Qtr 1	5	59	44	8	4	120
Qtr 2	7	42	43	12	4	108
Qtr 3	4	39	56	21	4	124
Qtr 4	3	59	53	13	3	131
Total	19	199	196	54	15	483
2003						
Qtr 1	2	62	58	17	3	142
Qtr 2	-	49	67	28	9	153
Qtr 3	1	41	75	23	9	149
Qtr 4	1	35	57	23	5	121
Total	4	187	257	91	26	565
2004						
Qtr 1	-	39	73	31	10	153
Qtr 2	-	59	76	20	5	160
Qtr 3	2	58	86	22	14	182
Qtr 4	-	35	95	18	12	160
Total	2	191	330	91	41	655
2005						
Qtr 1	-	45	75	20	14	154
Qtr 2	-	37	80	26	11	154
Qtr 3	1	43	76	33	8	161
Qtr 4	-	39	85	31	8	163
Total	1	164	316	110	41	632
2006						
Qtr 1	-	38	75	47	14	174
Qtr 2	-	51	75	38	9	173
Qtr 3	-	64	88	48	16	216
Qtr 4	-	61	90	45	11	207
Total	-	214	328	178	50	770

Source: Mental Health Information System, Department of Health.

Data Tables & Figures: Multiple Drug Related Mental Disorders

Figure A-10
Quarterly multiple drug related outpatient treatment episodes by sex
September quarter 2000 - December quarter 2006

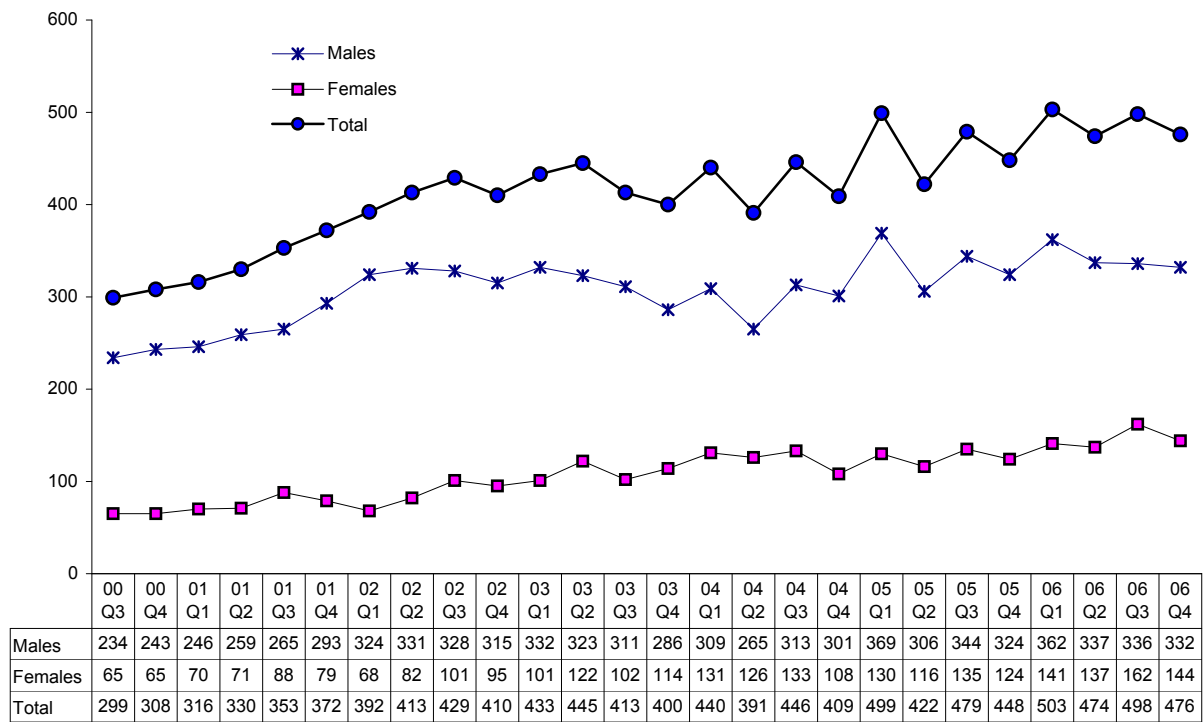
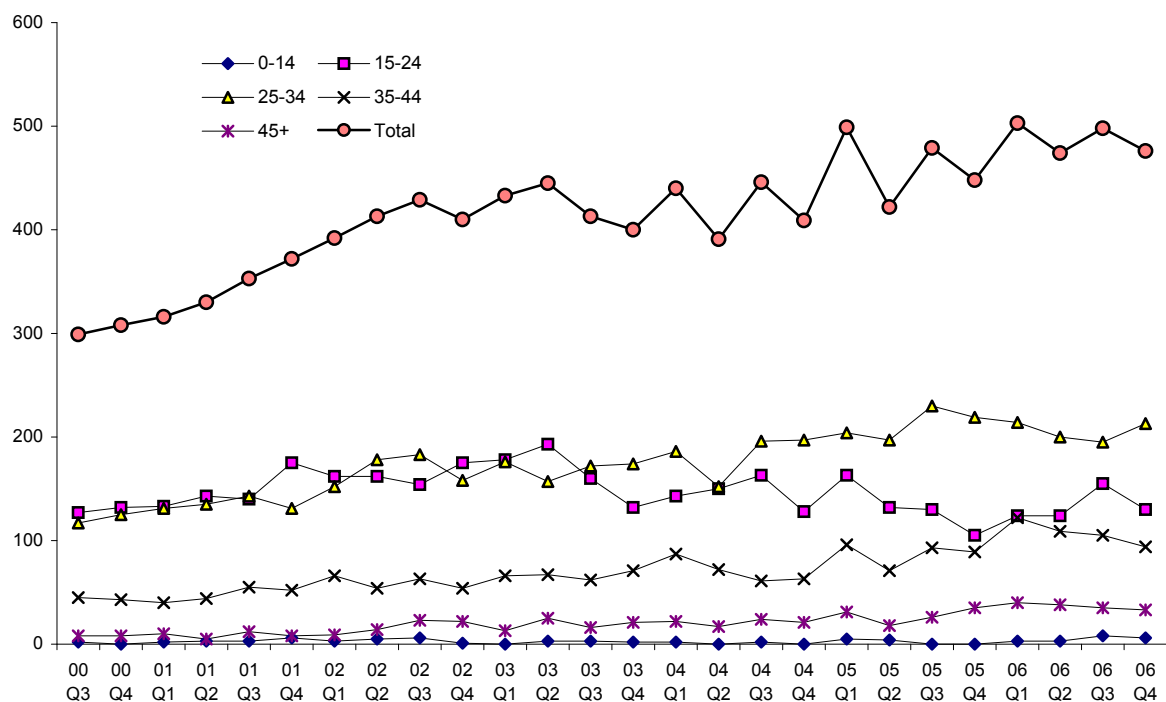
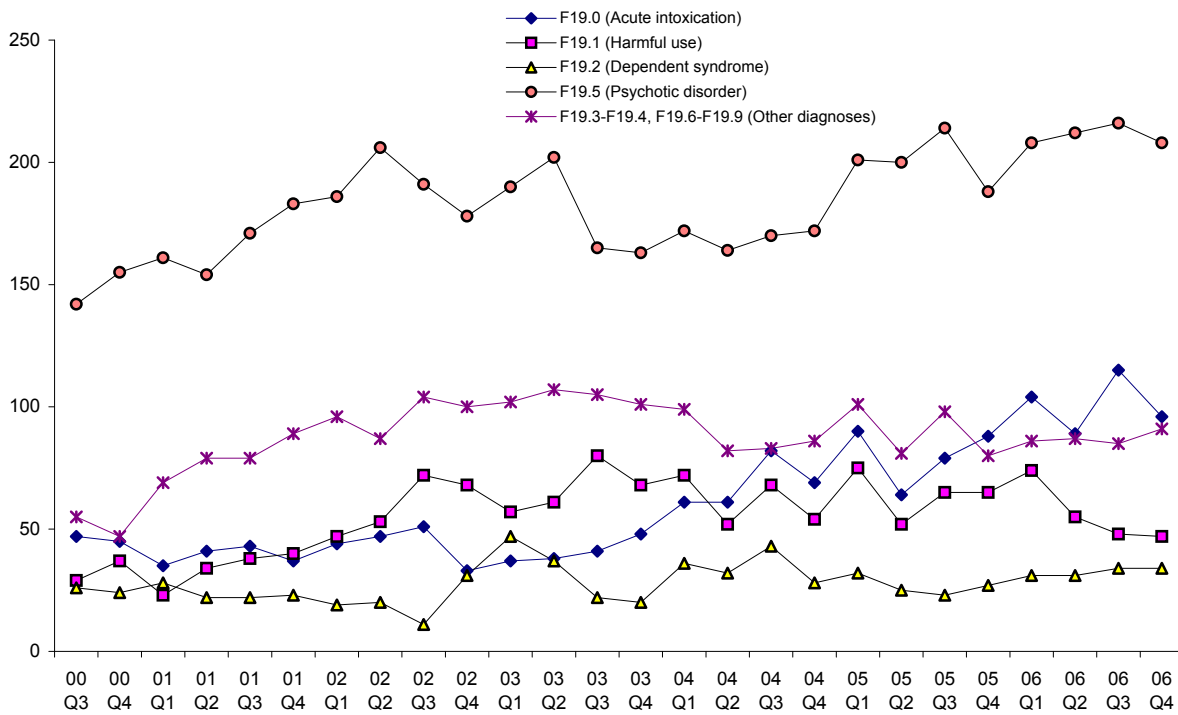


Figure A-11
Quarterly multiple drug related outpatient treatment episodes by age group
September quarter 2000 - December quarter 2006



Data Tables & Figures: Multiple Drug Related Mental Disorders

Figure A-12
Quarterly multiple drug related outpatient treatment episodes by sub diagnostic group
September quarter 2000 - December quarter 2006



Data Tables & Figures: Multiple Drug Related Mental Disorders

Table A-14

Quarterly multiple drug related psychiatric outpatient treatment episodes by diagnostic group, September quarter 2000 - December quarter 2006

	Acute intoxication (F19.0)	Harmful use (F19.1)	Dependent syndrome (F19.2)	Psychotic disorder (F19.5)	Other diagnoses (F19.3-F19.4, F19.6-F19.9)	Total
2000						
Qtr 3	47	29	26	142	55	299
Qtr 4	45	37	24	155	47	308
Total	92	66	50	297	102	607
2001						
Qtr 1	35	23	28	161	69	316
Qtr 2	41	34	22	154	79	330
Qtr 3	43	38	22	171	79	353
Qtr 4	37	40	23	183	89	372
Total	156	135	95	669	316	1371
2002						
Qtr 1	44	47	19	186	96	392
Qtr 2	47	53	20	206	87	413
Qtr 3	51	72	11	191	104	429
Qtr 4	33	68	31	178	100	410
Total	175	240	81	761	387	1644
2003						
Qtr 1	37	57	47	190	102	433
Qtr 2	38	61	37	202	107	445
Qtr 3	41	80	22	165	105	413
Qtr 4	48	68	20	163	101	400
Total	164	266	126	720	415	1691
2004						
Qtr 1	61	72	36	172	99	440
Qtr 2	61	52	32	164	82	391
Qtr 3	82	68	43	170	83	446
Qtr 4	69	54	28	172	86	409
Total	273	246	139	678	350	1686
2005						
Qtr 1	90	75	32	201	101	499
Qtr 2	64	52	25	200	81	422
Qtr 3	79	65	23	214	98	479
Qtr 4	88	65	27	188	80	448
Total	321	257	107	803	360	1848
2006						
Qtr 1	104	74	31	208	86	503
Qtr 2	89	55	31	212	87	474
Qtr 3	115	48	34	216	85	498
Qtr 4	96	47	34	208	91	476
Total	404	224	130	844	349	1951

Source: Mental Health Information System, Department of Health.

Data Tables & Figures: Multiple Drug Related Mental Disorders

Table A-15
Quarterly multiple drug related outpatient treatment episodes by age group, September quarter 2000 - December quarter 2006: males

	<15	15-24	25-34	35-44	45+	Total
2000						
Qtr 3	2	106	85	33	8	234
Qtr 4	-	111	93	31	8	243
Total	2	217	178	64	16	477
2001						
Qtr 1	2	105	101	29	9	246
Qtr 2	3	120	104	28	4	259
Qtr 3	2	110	105	36	12	265
Qtr 4	3	143	103	37	7	293
Total	10	478	413	130	32	1,063
2002						
Qtr 1	2	139	127	48	8	324
Qtr 2	4	134	142	40	11	331
Qtr 3	3	125	142	42	16	328
Qtr 4	-	138	123	38	16	315
Total	9	536	534	168	51	1,298
2003						
Qtr 1	-	135	138	49	10	332
Qtr 2	-	142	112	51	18	323
Qtr 3	1	116	132	50	12	311
Qtr 4	2	94	124	52	14	286
Total	3	487	506	202	54	1,252
2004						
Qtr 1	2	97	128	66	16	309
Qtr 2	-	99	107	48	11	265
Qtr 3	1	112	143	40	17	313
Qtr 4	-	94	149	46	12	301
Total	3	402	527	200	56	1,188
2005						
Qtr 1	2	128	157	58	24	369
Qtr 2	3	104	145	46	8	306
Qtr 3	-	96	172	60	16	344
Qtr 4	-	85	162	61	16	324
Total	5	413	636	225	64	1,343
2006						
Qtr 1	3	93	148	95	23	362
Qtr 2	3	86	140	85	23	337
Qtr 3	6	104	125	79	22	336
Qtr 4	5	101	135	71	20	332
Total	17	384	548	330	88	1,367

Source: Mental Health Information System, Department of Health.

Table A-16
Quarterly multiple drug related outpatient treatment episodes by age group, September quarter 2000 - December quarter 2006: females

	<15	15-24	25-34	35-44	45+	Total
2000						
Qtr 3	-	21	32	12	-	65
Qtr 4	-	21	32	12	-	65
Total	-	42	64	24	-	130
2001						
Qtr 1	-	28	30	11	1	70
Qtr 2	-	23	31	16	1	71
Qtr 3	1	30	38	19	-	88
Qtr 4	3	32	28	15	1	79
Total	4	113	127	61	3	308
2002						
Qtr 1	1	23	25	18	1	68
Qtr 2	1	28	36	14	3	82
Qtr 3	3	29	41	21	7	101
Qtr 4	1	37	35	16	6	95
Total	6	117	137	69	17	346
2003						
Qtr 1	-	43	38	17	3	101
Qtr 2	3	51	45	16	7	122
Qtr 3	2	44	40	12	4	102
Qtr 4	-	38	50	19	7	114
Total	5	176	173	64	21	439
2004						
Qtr 1	-	46	58	21	6	131
Qtr 2	-	51	45	24	6	126
Qtr 3	1	51	53	21	7	133
Qtr 4	-	34	48	17	9	108
Total	1	182	204	83	28	498
2005						
Qtr 1	3	35	47	38	7	130
Qtr 2	1	28	52	25	10	116
Qtr 3	-	34	58	33	10	135
Qtr 4	-	20	57	28	19	124
Total	4	117	214	124	46	505
2006						
Qtr 1	-	31	66	27	17	141
Qtr 2	-	38	60	24	15	137
Qtr 3	2	51	70	26	13	162
Qtr 4	1	29	78	23	13	144
Total	3	149	274	100	58	584

Source: Mental Health Information System, Department of Health.

Data Tables & Figures: Multiple Drug Related Mental Disorders

Table A-17
Quarterly multiple drug related outpatient
treatment episodes by age group, September
quarter 2000 - December quarter 2006: persons

	<15	15-24	25-34	35-44	45+	Total
2000						
Qtr 3	2	127	117	45	8	299
Qtr 4	-	132	125	43	8	308
Total	2	259	242	88	16	607
2001						
Qtr 1	2	133	131	40	10	316
Qtr 2	3	143	135	44	5	330
Qtr 3	3	140	143	55	12	353
Qtr 4	6	175	131	52	8	372
Total	14	591	540	191	35	1,371
2002						
Qtr 1	3	162	152	66	9	392
Qtr 2	5	162	178	54	14	413
Qtr 3	6	154	183	63	23	429
Qtr 4	1	175	158	54	22	410
Total	15	653	671	237	68	1,644
2003						
Qtr 1	-	178	176	66	13	433
Qtr 2	3	193	157	67	25	445
Qtr 3	3	160	172	62	16	413
Qtr 4	2	132	174	71	21	400
Total	8	663	679	266	75	1,691
2004						
Qtr 1	2	143	186	87	22	440
Qtr 2	-	150	152	72	17	391
Qtr 3	2	163	196	61	24	446
Qtr 4	-	128	197	63	21	409
Total	4	584	731	283	84	1,686
2005						
Qtr 1	5	163	204	96	31	499
Qtr 2	4	132	197	71	18	422
Qtr 3	-	130	230	93	26	479
Qtr 4	-	105	219	89	35	448
Total	9	530	850	349	110	1,848
2006						
Qtr 1	3	124	214	122	40	503
Qtr 2	3	124	200	109	38	474
Qtr 3	8	155	195	105	35	498
Qtr 4	6	130	213	94	33	476
Total	20	533	822	430	146	1,951

Source: Mental Health Information System, Department of Health.

Methodology

Caution should be exercised in interpretation of trends in data reported in this publication because:

- single consultations and group therapy consultations have been added together or occasions of service;
- inpatients include any separations in WA acute hospitals; and
- if outpatient diagnosis is not known then last known diagnosis is provided from another mental health episode.

Occasions of service (OCS) are reported under the guidelines of the National Minimum Data Set (NMDS) for Community Mental Health, Department of Health. (*Community Mental Health Reference Manual & DOH Technical Bulletins for Mental Health & Non Admitted Care.*)

Inconsistent reporting of OCS by using old method mainly occurred due to problems in the Local Area Mental Health Information System (LAMHIS) data system. LAMHIS focused on health professional activity rather than clients, which does not meet the NMDS requirements. To overcome this problem a new reporting method was developed by Information Collection and Management in conjunction with Division of Mental Health.

Previous LAMHIS reports are not suitable to report OCS as they over report OCS by approximately 40%. The mental health online clinical information system (PSOLIS) records OCS to national standards and a reporting tool has been developed by Information Collection and Management in conjunction with Division of Mental Health.

Counting rules for an OCS in LAMHIS are as follows:

- one OCS will be reported by a clinician for a person if it is a continuous service;
- client related activities such as staff meetings, travel etc are not reported;
- if two or more health professionals are present at the same patient consultation it is counted as one; and
- continuous group sessions over one day are counted as one OCS when the patient is not present.

Counts of OCS in 2003/2004 and 2004/2005 may also be affected because of a number of other considerations.

Decreases in 2003/2004 and 2004/2005 were due to:

- Reduction in the over reporting of same day contacts in PSOLIS (now with a date and time stamp) when compared to LAMHIS (no time stamp).
- Introduction of a new computing system (PSOLIS) has meant a significant change in work practices which has caused a down turn in data collection standards in the short term.
- A number of day rehabilitation programs were without a computing system for several months due to the introduction of PSOLIS.
- Normal variation with changes especially in day programs numbers which have significant impacts on contact numbers.
- Seasonal affects, eg during Christmas.

Increases in 2003/2004 and 2004/2005 were due to:

- Improved compliance and quality assurance processes/reporting all contacts under new Commonwealth guidelines.
- Programs not reported in LAMHIS are now taken up in PSOLIS. There is now Statewide capture.
- Significant improvement in collection of OCS when patients are not present, eg OCS have risen significantly in this area.
- Seasonal affects, eg inpatient discharges and re-admissions during Christmas.

Source: Mental Health Information System, Department of Health, WA.

This publication is available online at
<http://www.dao.health.wa.gov.au>