



## Drug Related Telephone Calls, 1986 - 2006

### In Brief

- The composition of licit drug related calls received by ADIS from 1986 to 2006 has varied, with tobacco related calls increasing up to early 2006, whereas prescribed drug related calls have steadily declined since the early 1990s. However, alcohol related calls, which were the most frequent licit drug call up to the mid 1990s, declined up to mid 2001 and have more recently steadily increased.
- Cannabis related calls steadily grew up to mid 1999, then declined to mid 2002 and after a relatively small increase to late 2004, have again declined.
- The most frequent number of designer drug related calls were from mid 1991 to mid 2000 and although have declined somewhat.
- From 1986 there have been marked fluctuations in calls involving amphetamines, with two pronounced peaks in early 1995 and at the end of 2000 and since mid 2002 calls have steadily increased.
- Opioid related calls have fallen sharply since high levels that occurred from early 1996 to late 1999, with a lower level of calls since 2001.

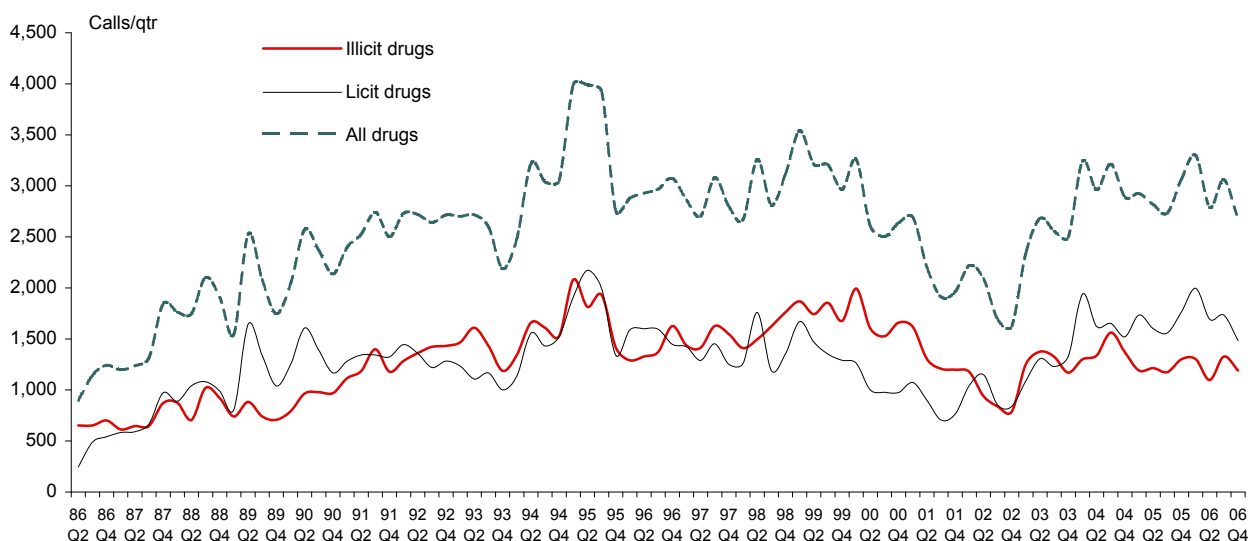
### Introduction

The Alcohol and Drug Information Service (ADIS) is a 24 hour statewide service which may be contacted by phone 1800 198 024 (freecall) or 08 9442 5000. It was established in April 1986.

ADIS classifies calls by the major purpose of the call, ie counselling or information only. The time series data in this report refers to counselling only calls as this is believed to measure problems people are experiencing due to the use of specific types of drugs.

ADIS is operated by the Drug and Alcohol Office (DAO) and provides confidential counselling and referral on alcohol and other drug problems for drug users, relatives and friends of those with problematic drug use. It operates in conjunction with the Parent Drug Information Service (PDIS), which was launched in October 1996 to provide specialist information, support, counselling and referral to key treatment and support services for parents concerned about drug use by their children.

**Figure 1**  
Quarterly licit & illicit drug related telephone calls, March 1986 - December 2006



Note: Refers to only counselling calls, ie excludes information calls and calls by non users.

Version: June 2007

## All Drugs

The number of quarterly calls for all drugs steadily increased from 899 calls in the June quarter 1986 to 3,993 calls in the March quarter 1995, then declined to 1,627 calls in the December quarter 2002 and has since steadily increased to 2,675 calls in the December quarter 2006. See Figure 1.

The number of annual calls increased from 5,594 in 1987, the first full year of operation (ADIS commenced in March 1986) to a peak of 14,657 calls in 1995, then declined to 7,629 calls in 2002, increased to 12,308 in 2004 and more recently have dropped slightly to 11,822 in 2006.

## Licit Drugs

Quarterly licit drug related calls increased from the 246 calls in the June quarter 1986 to 2,173 calls in the June quarter 1995 and then declined to a total of 839 calls in the December quarter 2002 and have since gradually increased to nearly 1,500 calls in the December quarter 2006.

Though the relationship may not be evident in all circumstances, variations in the number of licit drug related calls over the period appear to be closely related to public health campaigns, which have at different times targeted prescription drugs, alcohol and tobacco. For instance, the peaks in mid 1989 and mid 1990 are closely related to campaigns which targeted over prescribing of minor tranquilisers.

From the June quarter 1989 (599 calls) there was a steady decline in the number of quarterly prescribed drug calls up to the December quarter 2002 (90 calls), with some modest growth in calls up to mid 2005 and then a small reduction up to the present.

There was a gradual increase in the number of quarterly tobacco related calls from 1986 up to the June quarter 1998 (759 calls), declining to the December quarter 2001 (136 calls), increasing to the June quarter 2004 (688 calls) and has since declined to 374 calls in the December quarter 2006.

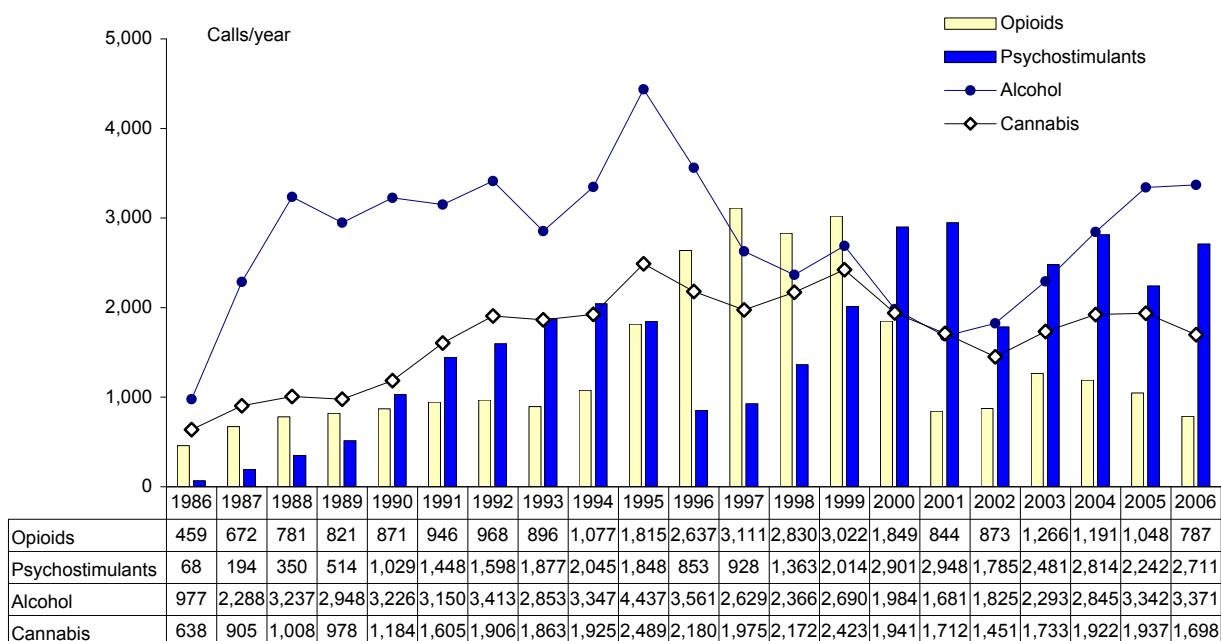
Whilst alcohol related calls have been the most frequent licit drug call from the inception of ADIS up to present, annual calls peaked in 1995 (4,437), then fell to 1,681 in 2001. Since 2001 alcohol related calls have increased with a total of 3,371 calls in 2006. See Figure 2.

## Illicit Drugs

There was an overall upward trend in the number of quarterly illicit drug related calls from 1986 to the March quarter 1995 (2,081 calls), followed by a gradual decline to the December quarter 2002 (788 calls). Since 2002 to mid 2004 illicit drug related calls increased and have since declined slightly with 1,191 calls in the December quarter 2006.

Figure 3 provides a detailed breakdown of quarterly trends in designer drug, psychostimulant, opioid and cannabis related calls from 1986 to the present as follows:

**Figure 2**  
Annual calls - alcohol, cannabis, opioids & psychostimulants, 1986 - 2006



- there appears to be a synergy between the markets for heroin and psychostimulants with these drugs being substitutes for one another because there is an inverse relationship between opioid and psychostimulant related calls;
- there has been a cyclical variation in psychostimulant calls which have become the most frequent type of illicit drug related call since the beginning of 2000; and
- from 1995 to 1999 there was a greater number of quarterly cannabis related calls compared to the period since 2000. Up to the end of 1999 quarterly cannabis related calls exceeded psychostimulant related calls.

## Cannabis

Quarterly cannabis related calls increased by more than two fold, from 203 calls in the the June quarter 1986 to 692 calls in the September quarter 1995 and then declined to 300 calls in the December quarter 2002. Since the December quarter 2002 calls increased to 573 in the September quarter 2004 and have since declined moderately to 371 in the September quarter 2006. See Figure 4.

## Psychostimulants

The term 'psychostimulant' refers both to amphetamine and methylamphetamine related calls. There have been marked cyclical variations in quarterly psychostimulant calls from 1986 up to the present.

Quarterly calls increased from 36 calls in the the September quarter 1986 (when calls were first recorded) to a peak of 711 calls in the March quarter 1995, followed by a marked decrease, of nearly two thirds, to 177 calls in the June quarter 1996. From mid 1996 psychostimulant calls increased sharply to 851 calls in the December quarter 2000.

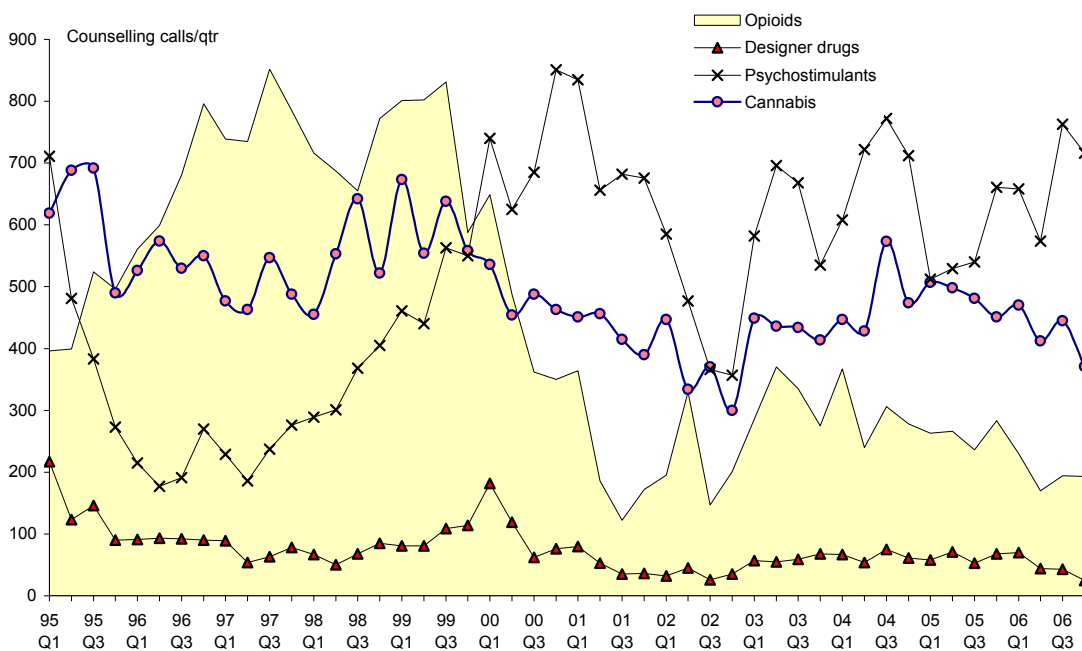
After the December quarter 2000, the number of calls declined by 58%, to 357 calls in the December quarter 2002 and then increased to 772 calls in the September quarter 2004. There was a drop from the peak of 772 calls to 512 calls in the March quarter 2005, and since then calls have increased by 40% to 716 in the December quarter 2006. See Figure 5.

## Opioids

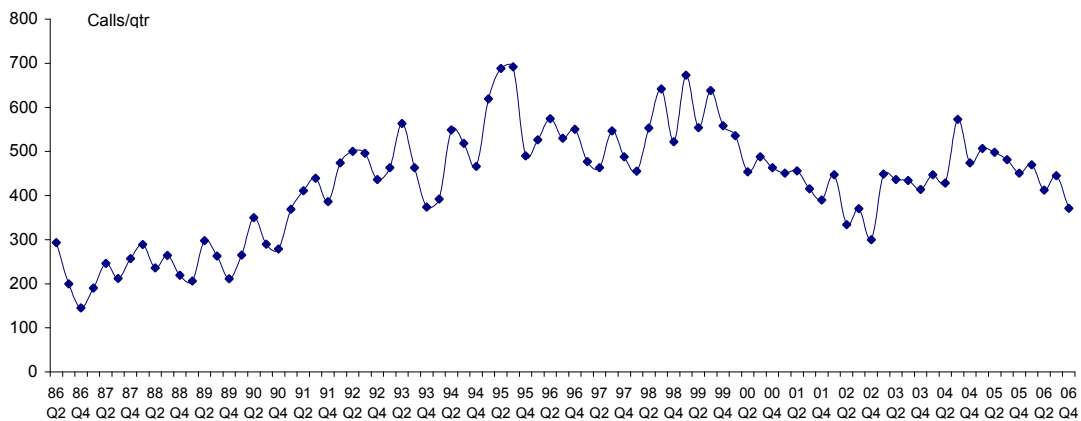
Quarterly opioid related calls remained relatively constant from 1986 to mid 1993 with about 150 to 200 calls per quarter. The number of opioid related calls increased by just over four fold, from 215 in the March quarter 1993 to 852 in the September quarter 1997, dropped to 655 calls in the September quarter 1998 and then increased to 831 in the September quarter 1999.

Since the September quarter 1999, the number of calls dropped markedly, to 122 in the September quarter 2001 and then have increased somewhat. to 193 calls in the December quarter 2006. See Figure 6.

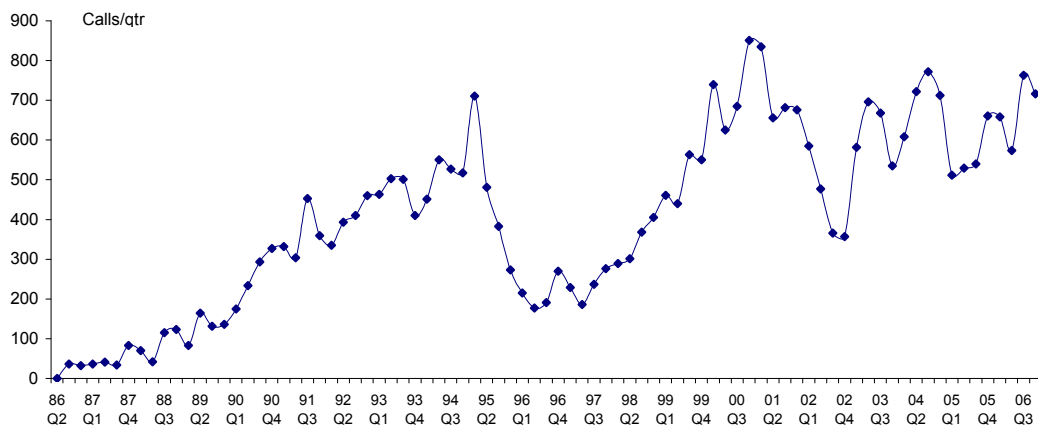
**Figure 3**  
Quarterly illicit drug related telephone calls, 1995 - 2006



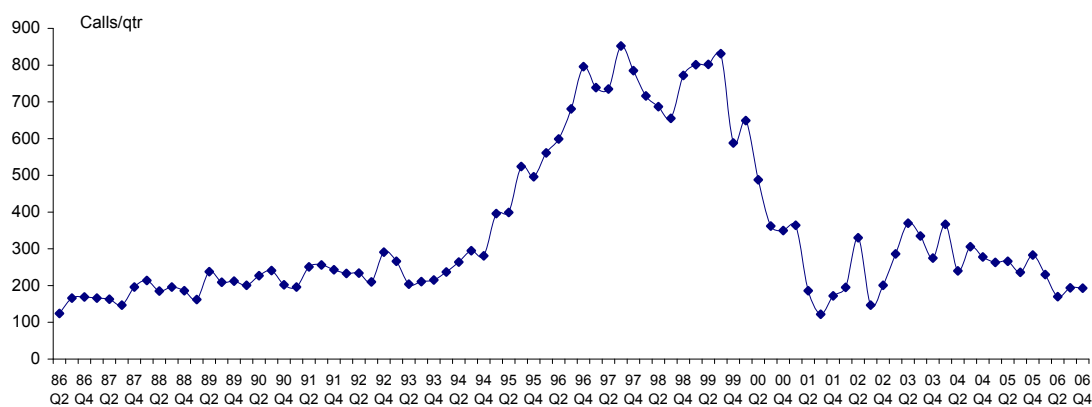
**Figure 4**  
**Quarterly cannabis related telephone calls, March 1986 - December 2006**



**Figure 5**  
**Quarterly psychostimulant related telephone calls, March 1986 - December 2006**



**Figure 6**  
**Quarterly opioid related telephone calls, March 1986 - December 2006**



To view or download detailed data tables and figures and a description of the methodology associated with this report go to the Drug and Alcohol Office website here.

This publication is available online at <http://www.dao.health.wa.gov.au>

# Drug Related Telephone Calls, 1986 - 2006

## Data Tables & Figures

**Table A-1**  
**Quarterly licit & illicit drug related telephone calls, June quarter 1986 -**  
**December quarter 1997**

Year	Quarter	Illicit		Licit		Total	Year	Quarter	Illicit		Licit		Total
		n	%	n	%				n	%			
1986	March	na		na		na	1992	March	1,284		1,445		2,729
	June	653		246		899		June	1,362		1,358		2,720
	September	653		490		1,143		September	1,422		1,220		2,642
	December	701		541		1,242		December	1,432		1,283		2,715
	<b>Total</b>	<b>2,007</b>	<b>61.1</b>	<b>1,277</b>	<b>38.9</b>	<b>3,284</b>		<b>Total</b>	<b>5,500</b>	<b>50.9</b>	<b>5,306</b>	<b>49.1</b>	<b>10,806</b>
1987	March	614		583		1,197	1993	March	1,467		1,234		2,701
	June	647		591		1,238		June	1,609		1,107		2,716
	September	648		668		1,316		September	1,431		1,167		2,598
	December	870		973		1,843		December	1,188		1,000		2,188
	<b>Total</b>	<b>2,779</b>	<b>49.7</b>	<b>2,815</b>	<b>50.3</b>	<b>5,594</b>		<b>Total</b>	<b>5,695</b>	<b>55.8</b>	<b>4,508</b>	<b>44.2</b>	<b>10,203</b>
1988	March	874		890		1,764	1994	March	1,341		1,134		2,475
	June	706		1,041		1,747		June	1,659		1,556		3,215
	September	1,020		1,081		2,101		September	1,609		1,430		3,039
	December	919		988		1,907		December	1,527		1,525		3,052
	<b>Total</b>	<b>3,519</b>	<b>46.8</b>	<b>4,000</b>	<b>53.2</b>	<b>7,519</b>		<b>Total</b>	<b>6,136</b>	<b>52.1</b>	<b>5,645</b>	<b>47.9</b>	<b>11,781</b>
1989	March	740		807		1,547	1995	March	2,081		1,912		3,993
	June	883		1,643		2,526		June	1,815		2,173		3,988
	September	741		1,340		2,081		September	1,931		1,990		3,921
	December	707		1,040		1,747		December	1,416		1,339		2,755
	<b>Total</b>	<b>3,071</b>	<b>38.9</b>	<b>4,830</b>	<b>61.1</b>	<b>7,901</b>		<b>Total</b>	<b>7,243</b>	<b>49.4</b>	<b>7,414</b>	<b>50.6</b>	<b>14,657</b>
1990	March	791		1,248		2,039	1996	March	1,291		1,589		2,880
	June	964		1,607		2,571		June	1,329		1,600		2,929
	September	979		1,391		2,370		September	1,373		1,595		2,968
	December	969		1,167		2,136		December	1,627		1,447		3,074
	<b>Total</b>	<b>3,703</b>	<b>40.6</b>	<b>5,413</b>	<b>59.4</b>	<b>9,116</b>		<b>Total</b>	<b>5,620</b>	<b>47.4</b>	<b>6,231</b>	<b>52.6</b>	<b>11,851</b>
1991	March	1,115		1,281		2,396	1997	March	1,437		1,423		2,860
	June	1,184		1,342		2,526		June	1,413		1,289		2,702
	September	1,399		1,343		2,742		September	1,626		1,452		3,078
	December	1,178		1,324		2,502		December	1,546		1,251		2,797
	<b>Total</b>	<b>4,876</b>	<b>48.0</b>	<b>5,290</b>	<b>52.0</b>	<b>10,166</b>		<b>Total</b>	<b>6,022</b>	<b>52.7</b>	<b>5,415</b>	<b>47.3</b>	<b>11,437</b>

**Note:** Refers to only counselling calls, ie excludes information calls and calls by non users.  
 ADIS commenced in March 1986 but data only available from April 1986.

**Table A-1**  
**Quarterly licit & illicit drug related telephone calls, March quarter 1998 -**  
**December quarter 2006**

Year	Quarter	Illicit		Licit		Total	Year	Quarter	Illicit		Licit		Total
		n	%	n	%				n	%			
1998	March	1,410		1,259		2,669	2003	March	1,251		1,088		2,339
	June	1,497		1,760		3,257		June	1,375		1,306		2,681
	September	1,624		1,190		2,814		September	1,326		1,230		2,556
	December	1,761		1,354		3,115		December	1,170		1,329		2,499
	<b>Total</b>	<b>6,292</b>	<b>53.1</b>	<b>5,563</b>	<b>46.9</b>	<b>11,855</b>		<b>Total</b>	<b>5,122</b>	<b>50.8</b>	<b>4,953</b>	<b>49.2</b>	<b>10,075</b>
1999	March	1,868		1,670		3,538	2004	March	1,301		1,940		3,241
	June	1,743		1,469		3,212		June	1,338		1,624		2,962
	September	1,854		1,352		3,207		September	1,563		1,651		3,214
	December	1,676		1,291		2,967		December	1,369		1,522		2,891
	<b>Total</b>	<b>7,141</b>	<b>55.3</b>	<b>7,141</b>	<b>44.7</b>	<b>12,923</b>		<b>Total</b>	<b>5,571</b>	<b>45.3</b>	<b>6,737</b>	<b>54.7</b>	<b>12,308</b>
2000	March	1,994		1,263		3,257	2005	March	1,191		1,734		2,925
	June	1,604		1,001		2,605		June	1,214		1,602		2,816
	September	1,526		977		2,503		September	1,175		1,559		2,734
	December	1,659		976		2,635		December	1,300		1,765		3,065
	<b>Total</b>	<b>6,783</b>	<b>61.7</b>	<b>4,217</b>	<b>38.3</b>	<b>11,000</b>		<b>Total</b>	<b>4,880</b>	<b>42.3</b>	<b>6,660</b>	<b>57.7</b>	<b>11,540</b>
2001	March	1,617		1,073		2,690	2006	March	1,302		1,996		3,298
	June	1,303		899		2,202		June	1,096		1,693		2,789
	September	1,208		706		1,914		September	1,327		1,733		3,060
	December	1,199		765		1,964		December	1,191		1,484		2,675
	<b>Total</b>	<b>5,327</b>	<b>60.7</b>	<b>3,443</b>	<b>39.3</b>	<b>8,770</b>		<b>Total</b>	<b>4,916</b>	<b>41.6</b>	<b>6,906</b>	<b>58.4</b>	<b>11,822</b>
2002	March	1,176		1,044		2,220							
	June	941		1,150		2,091							
	September	837		854		1,691							
	December	788		839		1,627							
	<b>Total</b>	<b>3,742</b>	<b>49.0</b>	<b>3,887</b>	<b>51.0</b>	<b>7,629</b>							

**Note:** Refers to only counselling calls, ie excludes information calls and calls by non users.

**Table A-2**  
**Annual drug related telephone calls, all types of drugs, 1986 - 1996**

<b>Drug group</b>	<b>1986</b>	<b>1987</b>	<b>1988</b>	<b>1989</b>	<b>1990</b>	<b>1991</b>	<b>1992</b>	<b>1993</b>	<b>1994</b>	<b>1995</b>	<b>1996</b>
Alcohol	977	2,288	3,237	2,948	3,226	3,150	3,413	2,853	3,347	4,437	3,561
Tobacco	47	181	215	568	608	445	513	557	829	1,248	849
Cannabis	638	905	1,008	978	1,184	1,605	1,906	1,863	1,925	2,489	2,180
<b>Opioids</b>											
Heroin	459	672	781	731	747	783	817	768	937	1,580	1,911
Methadone (prescribed)	-	-	-	-	-	-	-	-	-	-	151
Buprenorphine	-	-	-	-	-	-	-	-	-	-	na
Narcotic analgesics	-	-	-	-	-	-	-	-	-	-	384
Non narcotic analgesics	-	-	-	90	124	163	151	128	140	235	191
Other and unspecified	-	-	-	-	-	-	-	-	-	-	na
<b>Sub total</b>	<b>459</b>	<b>672</b>	<b>781</b>	<b>821</b>	<b>871</b>	<b>946</b>	<b>968</b>	<b>896</b>	<b>1,077</b>	<b>1,815</b>	<b>2,637</b>
<b>Psychostimulants</b>											
Amphetamines (illicit)	68	138	279	406	937	1,351	1,498	1,789	1,957	1,737	657
Methamphetamine	-	-	-	-	-	-	-	-	-	-	-
Dexamphetamines (prescribed)	-	-	-	-	-	-	-	-	-	-	114
Cocaine	-	56	71	69	61	62	74	54	64	71	82
Other & unspecified	-	-	-	39	90	35	26	34	24	40	-
<b>Sub total</b>	<b>68</b>	<b>194</b>	<b>350</b>	<b>514</b>	<b>1,029</b>	<b>1,448</b>	<b>1,598</b>	<b>1,877</b>	<b>2,045</b>	<b>1,848</b>	<b>853</b>
<b>Prescribed drugs</b>											
Major tranquillisers	-	-	-	37	59	71	36	56	65	91	64
Minor tranquillisers	253	346	548	736	806	770	585	466	655	699	474
Anti-depressants	-	-	-	165	177	234	226	169	258	340	337
Other & unspecified	-	-	-	286	413	457	382	279	351	364	220
<b>Sub total</b>	<b>253</b>	<b>346</b>	<b>548</b>	<b>1,224</b>	<b>1,455</b>	<b>1,532</b>	<b>1,229</b>	<b>970</b>	<b>1,329</b>	<b>1,494</b>	<b>1,095</b>
<b>Designer drugs</b>											
Ecstasy	-	18	113	78	73	135	303	161	187	176	134
LSD & other hallucinogens	25	40	76	84	134	253	332	331	329	400	232
Other & unspecified	-	-	-	-	-	-	-	-	-	-	na
<b>Sub total</b>	<b>25</b>	<b>58</b>	<b>189</b>	<b>162</b>	<b>207</b>	<b>388</b>	<b>635</b>	<b>492</b>	<b>516</b>	<b>576</b>	<b>366</b>
<b>Other drugs</b>											
Volatile substances	-	-	-	132	163	232	200	205	255	312	179
Anabolic steroids	-	-	-	-	-	-	-	-	-	-	36
Polydrug	266	316	354	178	171	211	111	101	161	158	95
Opioid abstinence	-	-	-	-	-	-	-	-	-	-	-
Alcohol abstinence	-	-	-	-	-	-	-	-	-	-	-
Other & unspecified	551	634	837	376	202	209	233	389	297	280	-
<b>Sub total</b>	<b>817</b>	<b>950</b>	<b>1,191</b>	<b>686</b>	<b>536</b>	<b>652</b>	<b>544</b>	<b>695</b>	<b>713</b>	<b>750</b>	<b>310</b>
<b>Total</b>	<b>3,284</b>	<b>5,594</b>	<b>7,519</b>	<b>7,901</b>	<b>9,116</b>	<b>10,166</b>	<b>10,806</b>	<b>10,203</b>	<b>11,781</b>	<b>14,657</b>	<b>11,851</b>

**Note:** Refers to only counselling calls, ie excludes information calls and calls by non users.

**Table A-3**  
**Annual drug related telephone calls, all types of drugs, 1997 - 2006**

Drug group	1997	1998	1999	2000	2001	2002	2003	2004	2005	2006
Alcohol	2,629	2,366	2,690	1,984	1,681	1,825	2,293	2,845	3,342	3,371
Tobacco	1,272	1,851	1,528	1,106	968	1,056	1,233	2,454	1,972	2,493
Cannabis	1,975	2,172	2,423	1,941	1,712	1,451	1,733	1,922	1,937	1,698
<b>Opioids</b>										
Heroin	2,399	2,148	2,142	1,430	515	315	597	509	389	281
Methadone (prescribed)	151	286	369	202	165	107	172	199	209	151
Buprenorphine	na	na	162	11	13	69	192	183	145	105
Narcotic analgesics	448	287	280	166	115	344	244	248	233	175
Non narcotic analgesics	113	109	65	27	25	25	23	22	41	39
Other & unspecified	na	na	5	13	11	13	38	30	31	36
<b>Sub total</b>	<b>3,111</b>	<b>2,830</b>	<b>3,022</b>	<b>1,849</b>	<b>844</b>	<b>873</b>	<b>1,266</b>	<b>1,191</b>	<b>1,048</b>	<b>787</b>
<b>Psychostimulants</b>										
Amphetamines (illicit)	750	1,176	1,785	2,738	2,693	1,628	2,267	2,612	2,046	2,558
Methamphetamine	-	-	-	-	99	33	2	-	-	-
Dexamphetamines (prescribed)	141	140	169	106	118	103	159	137	139	88
Cocaine	37	47	55	52	35	20	42	61	48	53
Other & unspecified	-	-	5	5	3	1	11	4	9	12
<b>Sub total</b>	<b>928</b>	<b>1,363</b>	<b>2,014</b>	<b>2,901</b>	<b>2,849</b>	<b>1,785</b>	<b>2,481</b>	<b>2,814</b>	<b>2,242</b>	<b>2,711</b>
<b>Prescribed drugs</b>										
Major tranquillisers	63	40	37	53	38	32	57	44	57	30
Minor tranquillisers	355	291	290	290	173	214	290	272	240	210
Anti-depressants	198	172	176	121	74	80	145	133	131	69
Other & unspecified	186	161	121	144	147	96	208	250	217	202
<b>Sub total</b>	<b>802</b>	<b>664</b>	<b>624</b>	<b>608</b>	<b>432</b>	<b>422</b>	<b>700</b>	<b>699</b>	<b>645</b>	<b>511</b>
<b>Designer drugs</b>										
Ecstasy	123	173	329	360	172	113	206	226	218	162
LSD & other hallucinogens	161	97	53	76	32	19	27	27	30	17
Other & unspecified	na	na	2	3	-	6	6	4	2	3
<b>Sub total</b>	<b>284</b>	<b>270</b>	<b>384</b>	<b>439</b>	<b>204</b>	<b>138</b>	<b>239</b>	<b>257</b>	<b>250</b>	<b>182</b>
<b>Other drugs</b>										
Volatile substances	148	119	110	56	34	28	49	50	50	35
Anabolic steroids	32	26	22	13	6	5	15	11	4	6
Polydrug	256	194	45	-	-	-	-	-	-	-
Opioid abstinence	-	-	58	100	32	26	57	57	42	24
Alcohol abstinence	-	-	2	-	1	-	1	-	-	1
Other & unspecified	-	-	1	3	7	2	8	8	8	3
<b>Sub total</b>	<b>436</b>	<b>339</b>	<b>238</b>	<b>172</b>	<b>80</b>	<b>61</b>	<b>130</b>	<b>126</b>	<b>104</b>	<b>69</b>
<b>Total</b>	<b>11,437</b>	<b>11,855</b>	<b>12,923</b>	<b>11,000</b>	<b>8,770</b>	<b>7,629</b>	<b>10,075</b>	<b>12,308</b>	<b>11,540</b>	<b>11,822</b>

**Note:** Refers to only counselling calls, ie excludes information calls and calls by non users.



Table A-4

## Quarterly alcohol related telephone calls, June quarter 1986 - December quarter 2006

Year	Quarter	No. calls	Year	Quarter	No. calls	Year	Quarter	No. calls
1986	March	-	1993	March	822	2000	March	557
	June	132		June	672		June	498
	September	371		September	677		September	437
	December	474		December	682		December	492
	<b>Total</b>	<b>977</b>		<b>Total</b>	<b>2,853</b>		<b>Total</b>	<b>1,984</b>
1987	March	486	1994	March	719	2001	March	445
	June	479		June	854		June	409
	September	515		September	849		September	369
	December	808		December	925		December	458
	<b>Total</b>	<b>2,288</b>		<b>Total</b>	<b>3,347</b>		<b>Total</b>	<b>1,681</b>
1988	March	721	1995	March	1,183	2002	March	517
	June	831		June	1,101		June	408
	September	875		September	1,274		September	427
	December	810		December	879		December	473
	<b>Total</b>	<b>3,237</b>		<b>Total</b>	<b>4,437</b>		<b>Total</b>	<b>1,825</b>
1989	March	706	1996	March	963	2003	March	549
	June	790		June	864		June	502
	September	767		September	887		September	596
	December	685		December	847		December	646
	<b>Total</b>	<b>2,948</b>		<b>Total</b>	<b>3,561</b>		<b>Total</b>	<b>2,293</b>
1990	March	822	1997	March	739	2004	March	816
	June	820		June	649		June	633
	September	859		September	611		September	667
	December	725		December	630		December	729
	<b>Total</b>	<b>3,226</b>		<b>Total</b>	<b>2,629</b>		<b>Total</b>	<b>2,845</b>
1991	March	824	1998	March	585	2005	March	844
	June	719		June	625		June	789
	September	770		September	553		September	777
	December	837		December	603		December	932
	<b>Total</b>	<b>3,150</b>		<b>Total</b>	<b>2,366</b>		<b>Total</b>	<b>3,342</b>
1992	March	965	1999	March	805	2006	March	928
	June	806		June	690		June	699
	September	805		September	583		September	863
	December	837		December	612		December	881
	<b>Total</b>	<b>3,413</b>		<b>Total</b>	<b>2,690</b>		<b>Total</b>	<b>3,371</b>

**Note:** Refers to only counselling calls, ie excludes information calls and calls by non users.

Table A-5

## Quarterly tobacco related telephone calls, June quarter 1986 - December quarter 2006

Year	Quarter	No. calls	Year	Quarter	No. calls	Year	Quarter	No. calls
1986	March	-	1993	March	66	2000	March	375
	June	12		June	166		June	262
	September	20		September	246		September	270
	December	15		December	79		December	199
	<b>Total</b>	<b>47</b>		<b>Total</b>	<b>557</b>		<b>Total</b>	<b>1,106</b>
1987	March	20	1994	March	103	2001	March	342
	June	34		June	343		June	316
	September	62		September	197		September	174
	December	65		December	186		December	136
	<b>Total</b>	<b>181</b>		<b>Total</b>	<b>829</b>		<b>Total</b>	<b>968</b>
1988	March	35	1995	March	245	2002	March	310
	June	67		June	625		June	343
	September	70		September	241		September	245
	December	43		December	137		December	158
	<b>Total</b>	<b>215</b>		<b>Total</b>	<b>1,248</b>		<b>Total</b>	<b>1,056</b>
1989	March	28	1996	March	170	2003	March	246
	June	217		June	256		June	427
	September	218		September	245		September	255
	December	105		December	178		December	305
	<b>Total</b>	<b>568</b>		<b>Total</b>	<b>849</b>		<b>Total</b>	<b>1,233</b>
1990	March	129	1997	March	241	2004	March	679
	June	210		June	316		June	688
	September	172		September	461		September	620
	December	97		December	254		December	467
	<b>Total</b>	<b>608</b>		<b>Total</b>	<b>1,272</b>		<b>Total</b>	<b>2,454</b>
1991	March	103	1998	March	327	2005	March	528
	June	128		June	759		June	488
	September	136		September	326		September	487
	December	78		December	439		December	469
	<b>Total</b>	<b>445</b>		<b>Total</b>	<b>1,851</b>		<b>Total</b>	<b>1,972</b>
1992	March	128	1999	March	473	2006	March	788
	June	196		June	432		June	734
	September	125		September	284		September	597
	December	64		December	339		December	374
	<b>Total</b>	<b>513</b>		<b>Total</b>	<b>1,528</b>		<b>Total</b>	<b>2,493</b>

**Note:** Refers to only counselling calls, ie excludes information calls and calls by non users.

**Table A-6**  
**Quarterly prescribed drug related telephone calls, June quarter 1986 -**  
**December quarter 2006**

Year	Quarter	No. calls	Year	Quarter	No. calls	Year	Quarter	No. calls
1986	March	-	1993	March	295	2000	March	170
	June	102		June	244		June	124
	September	99		September	216		September	149
	December	52		December	215		December	165
	<b>Total</b>	<b>253</b>		<b>Total</b>	<b>970</b>		<b>Total</b>	<b>608</b>
1987	March	77	1994	March	283	2001	March	142
	June	78		June	318		June	104
	September	91		September	343		September	102
	December	100		December	385		December	84
	<b>Total</b>	<b>346</b>		<b>Total</b>	<b>1,329</b>		<b>Total</b>	<b>432</b>
1988	March	134	1995	March	423	2002	March	110
	June	143		June	394		June	129
	September	136		September	413		September	93
	December	135		December	264		December	90
	<b>Total</b>	<b>548</b>		<b>Total</b>	<b>1,494</b>		<b>Total</b>	<b>422</b>
1989	March	73	1996	March	275	2003	March	143
	June	599		June	283		June	162
	September	324		September	271		September	176
	December	228		December	266		December	219
	<b>Total</b>	<b>1,224</b>		<b>Total</b>	<b>1,095</b>		<b>Total</b>	<b>700</b>
1990	March	265	1997	March	260	2004	March	220
	June	540		June	169		June	167
	September	326		September	194		September	169
	December	324		December	179		December	143
	<b>Total</b>	<b>1,455</b>		<b>Total</b>	<b>802</b>		<b>Total</b>	<b>699</b>
1991	March	335	1998	March	177	2005	March	190
	June	445		June	208		June	155
	September	383		September	137		September	134
	December	369		December	142		December	166
	<b>Total</b>	<b>1,532</b>		<b>Total</b>	<b>664</b>		<b>Total</b>	<b>645</b>
1992	March	321	1999	March	185	2006	March	131
	June	315		June	151		June	135
	September	263		September	131		September	138
	December	330		December	157		December	107
	<b>Total</b>	<b>1,229</b>		<b>Total</b>	<b>624</b>		<b>Total</b>	<b>511</b>

**Note:** Refers to only counselling calls, ie excludes information calls and calls by non users.

**Table A-7**  
**Quarterly cannabis related telephone calls, June quarter 1986 - December quarter 2006**

Year	Quarter	No. calls	Year	Quarter	No. calls	Year	Quarter	No. calls
1986	March	-	1993	March	463	2000	March	536
	June	293		June	563		June	454
	September	200		September	463		September	488
	December	145		December	374		December	463
	<b>Total</b>	<b>638</b>		<b>Total</b>	<b>1,863</b>		<b>Total</b>	<b>1,941</b>
1987	March	190	1994	March	392	2001	March	451
	June	246		June	549		June	456
	September	212		September	518		September	415
	December	257		December	466		December	390
	<b>Total</b>	<b>905</b>		<b>Total</b>	<b>1,925</b>		<b>Total</b>	<b>1,712</b>
1988	March	289	1995	March	619	2002	March	447
	June	236		June	688		June	334
	September	264		September	692		September	370
	December	219		December	490		December	300
	<b>Total</b>	<b>1,008</b>		<b>Total</b>	<b>2,489</b>		<b>Total</b>	<b>1,451</b>
1989	March	206	1996	March	526	2003	March	449
	June	298		June	574		June	436
	September	263		September	530		September	434
	December	211		December	550		December	414
	<b>Total</b>	<b>978</b>		<b>Total</b>	<b>2,180</b>		<b>Total</b>	<b>1,733</b>
1990	March	265	1997	March	477	2004	March	447
	June	350		June	463		June	428
	September	290		September	547		September	573
	December	279		December	488		December	474
	<b>Total</b>	<b>1,184</b>		<b>Total</b>	<b>1,975</b>		<b>Total</b>	<b>1,922</b>
1991	March	369	1998	March	455	2005	March	507
	June	411		June	553		June	498
	September	439		September	642		September	481
	December	386		December	522		December	451
	<b>Total</b>	<b>1,605</b>		<b>Total</b>	<b>2,172</b>		<b>Total</b>	<b>1,937</b>
1992	March	474	1999	March	673	2006	March	470
	June	500		June	554		June	412
	September	496		September	638		September	445
	December	436		December	558		December	371
	<b>Total</b>	<b>1,906</b>		<b>Total</b>	<b>2,423</b>		<b>Total</b>	<b>1,698</b>

**Note:** Refers to only counselling calls, ie excludes information calls and calls by non users.

**Table A-8**  
**Quarterly designer drug related telephone calls, September quarter 1986 -**  
**December quarter 2006**

Year	Quarter	No. calls	Year	Quarter	No. calls	Year	Quarter	No. calls
1986	March	-	1993	March	141	2000	March	182
	June	-		June	143		June	119
	September	22		September	113		September	62
	December	3		December	95		December	76
	<b>Total</b>	<b>25</b>		<b>Total</b>	<b>492</b>		<b>Total</b>	<b>439</b>
1987	March	4	1994	March	141	2001	March	80
	June	8		June	131		June	53
	September	14		September	110		September	35
	December	32		December	134		December	36
	<b>Total</b>	<b>58</b>		<b>Total</b>	<b>516</b>		<b>Total</b>	<b>204</b>
1988	March	43	1995	March	217	2002	March	32
	June	26		June	123		June	45
	September	73		September	146		September	26
	December	47		December	90		December	35
	<b>Total</b>	<b>189</b>		<b>Total</b>	<b>576</b>		<b>Total</b>	<b>138</b>
1989	March	26	1996	March	91	2003	March	57
	June	60		June	93		June	55
	September	43		September	92		September	59
	December	33		December	90		December	68
	<b>Total</b>	<b>162</b>		<b>Total</b>	<b>366</b>		<b>Total</b>	<b>239</b>
1990	March	40	1997	March	89	2004	March	67
	June	45		June	54		June	54
	September	60		September	63		September	75
	December	62		December	78		December	61
	<b>Total</b>	<b>207</b>		<b>Total</b>	<b>284</b>		<b>Total</b>	<b>257</b>
1991	March	58	1998	March	67	2005	March	58
	June	84		June	50		June	71
	September	125		September	68		September	53
	December	121		December	85		December	68
	<b>Total</b>	<b>388</b>		<b>Total</b>	<b>270</b>		<b>Total</b>	<b>250</b>
1992	March	139	1999	March	81	2006	March	70
	June	147		June	81		June	44
	September	189		September	109		September	43
	December	160		December	113		December	25
	<b>Total</b>	<b>635</b>		<b>Total</b>	<b>384</b>		<b>Total</b>	<b>182</b>

**Note:** Refers to only counselling calls, ie excludes information calls and calls by non users.

**Table A-9**  
**Quarterly psychostimulant related telephone calls, September quarter 1986 -**  
**December quarter 2006**

Year	Quarter	No. calls	Year	Quarter	No. calls	Year	Quarter	No. calls
1986	March	-	1993	March	463	2000	March	740
	June	-		June	503		June	625
	September	36		September	501		September	685
	December	32		December	410		December	851
	<b>Total</b>	<b>68</b>		<b>Total</b>	<b>1,877</b>		<b>Total</b>	<b>2,901</b>
1987	March	36	1994	March	451	2001	March	835
	June	41		June	550		June	656
	September	34		September	527		September	682
	December	83		December	517		December	676
	<b>Total</b>	<b>194</b>		<b>Total</b>	<b>2,045</b>		<b>Total</b>	<b>2,849</b>
1988	March	70	1995	March	711	2002	March	585
	June	42		June	481		June	477
	September	115		September	383		September	366
	December	123		December	273		December	357
	<b>Total</b>	<b>350</b>		<b>Total</b>	<b>1,848</b>		<b>Total</b>	<b>1,785</b>
1989	March	83	1996	March	215	2003	March	582
	June	164		June	177		June	696
	September	131		September	191		September	668
	December	136		December	270		December	535
	<b>Total</b>	<b>514</b>		<b>Total</b>	<b>853</b>		<b>Total</b>	<b>2,481</b>
1990	March	175	1997	March	229	2004	March	608
	June	234		June	186		June	722
	September	293		September	237		September	772
	December	327		December	276		December	712
	<b>Total</b>	<b>1,029</b>		<b>Total</b>	<b>928</b>		<b>Total</b>	<b>2,814</b>
1991	March	332	1998	March	289	2005	March	512
	June	304		June	301		June	529
	September	453		September	368		September	540
	December	359		December	405		December	661
	<b>Total</b>	<b>1,448</b>		<b>Total</b>	<b>1,363</b>		<b>Total</b>	<b>2,242</b>
1992	March	335	1999	March	461	2006	March	658
	June	393		June	440		June	574
	September	410		September	563		September	763
	December	460		December	550		December	716
	<b>Total</b>	<b>1,598</b>		<b>Total</b>	<b>2,014</b>		<b>Total</b>	<b>2,711</b>

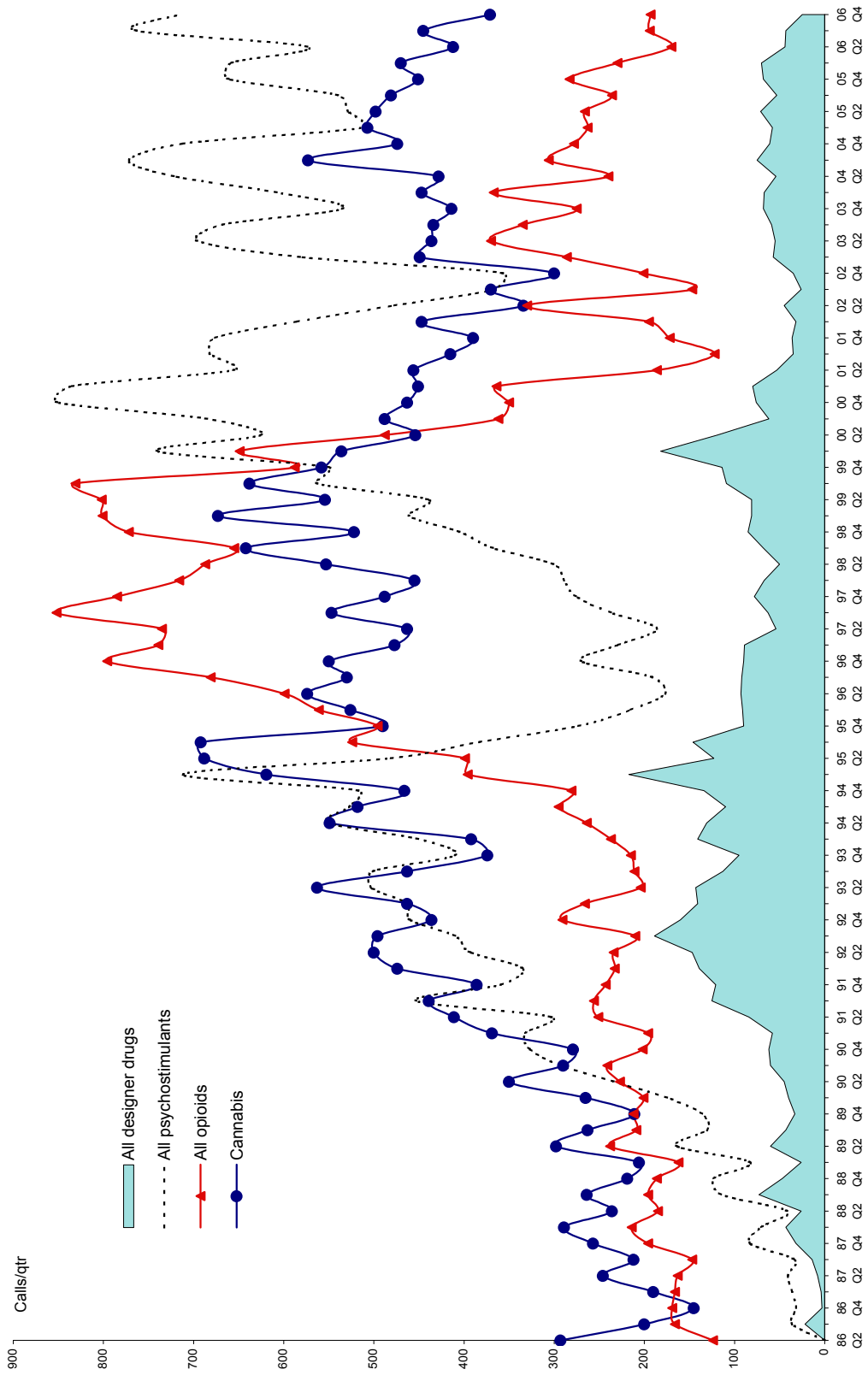
**Note:** Refers to only counselling calls, ie excludes information calls and calls by non users.

**Table A-10**  
**Quarterly opioid related telephone calls, June quarter 1986 - December quarter 2006**

Year	Quarter	No. calls	Year	Quarter	No. calls	Year	Quarter	No. calls
1986	March	-	1993	March	215	2000	March	649
	June	124		June	179		June	488
	September	166		September	183		September	362
	December	169		December	191		December	350
	<b>Total</b>	<b>459</b>		<b>Total</b>	<b>768</b>		<b>Total</b>	<b>1,849</b>
1987	March	166	1994	March	208	2001	March	364
	June	163		June	223		June	186
	September	147		September	254		September	122
	December	196		December	252		December	172
	<b>Total</b>	<b>672</b>		<b>Total</b>	<b>937</b>		<b>Total</b>	<b>844</b>
1988	March	214	1995	March	335	2002	March	195
	June	185		June	346		June	330
	September	196		September	462		September	147
	December	186		December	437		December	201
	<b>Total</b>	<b>781</b>		<b>Total</b>	<b>1,580</b>		<b>Total</b>	<b>873</b>
1989	March	162	1996	March	561	2003	March	286
	June	201		June	599		June	370
	September	178		September	681		September	335
	December	190		December	796		December	275
	<b>Total</b>	<b>731</b>		<b>Total</b>	<b>2,637</b>		<b>Total</b>	<b>1,266</b>
1990	March	169	1997	March	739	2004	March	367
	June	190		June	735		June	240
	September	207		September	852		September	306
	December	181		December	785		December	278
	<b>Total</b>	<b>747</b>		<b>Total</b>	<b>3,111</b>		<b>Total</b>	<b>1,191</b>
1991	March	177	1998	March	716	2005	March	263
	June	201		June	687		June	266
	September	202		September	655		September	236
	December	203		December	772		December	283
	<b>Total</b>	<b>783</b>		<b>Total</b>	<b>2,830</b>		<b>Total</b>	<b>1,048</b>
1992	March	202	1999	March	801	2006	March	230
	June	193		June	802		June	170
	September	183		September	831		September	194
	December	239		December	588		December	193
	<b>Total</b>	<b>817</b>		<b>Total</b>	<b>3,022</b>		<b>Total</b>	<b>787</b>

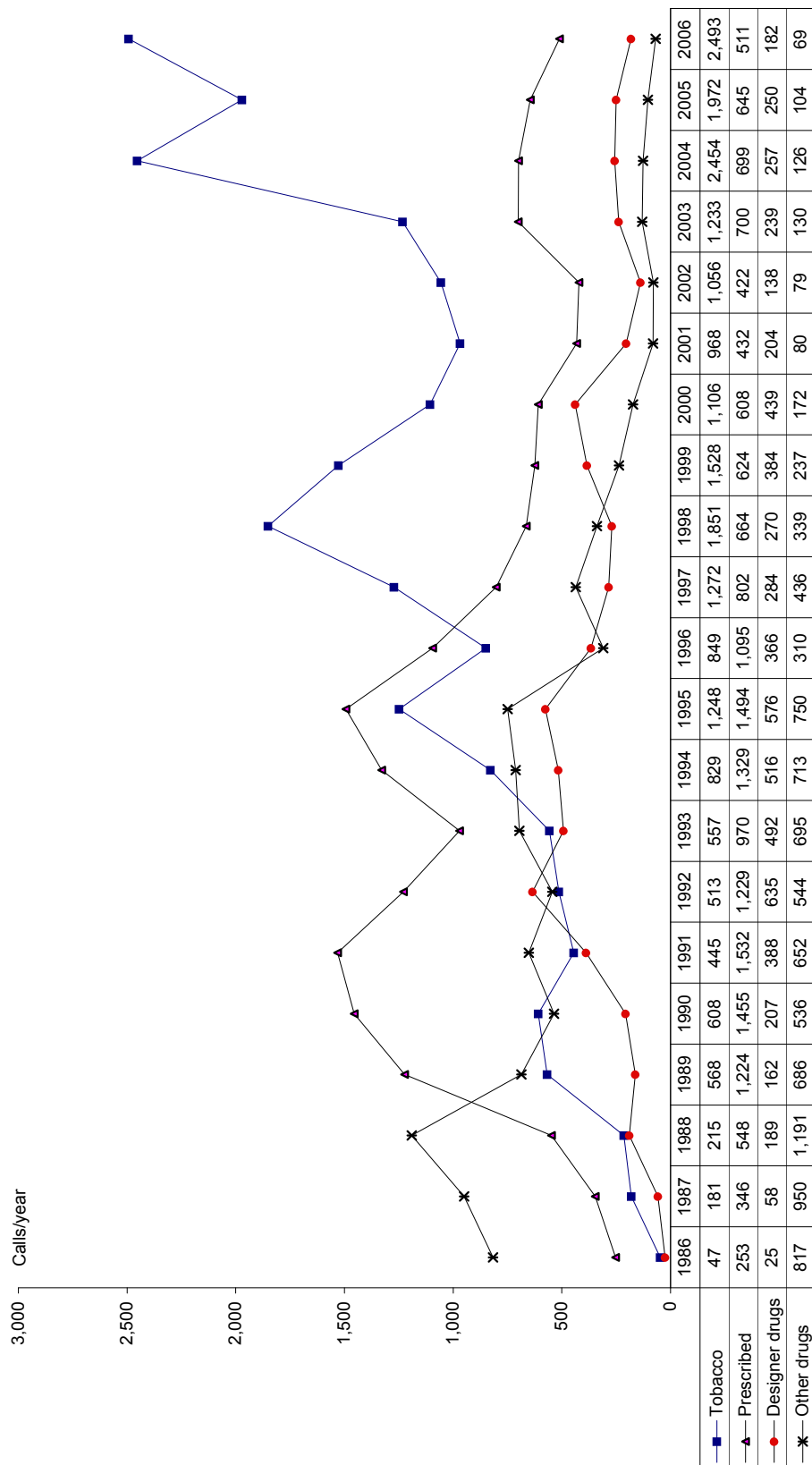
**Note:** Refers to only counselling calls, ie excludes information calls and calls by non users.

**Figure A-1**  
**Quarterly psychostimulant, opioid, cannabis & designer drug related telephone calls, June quarter 1986 -**  
**December quarter 2006**



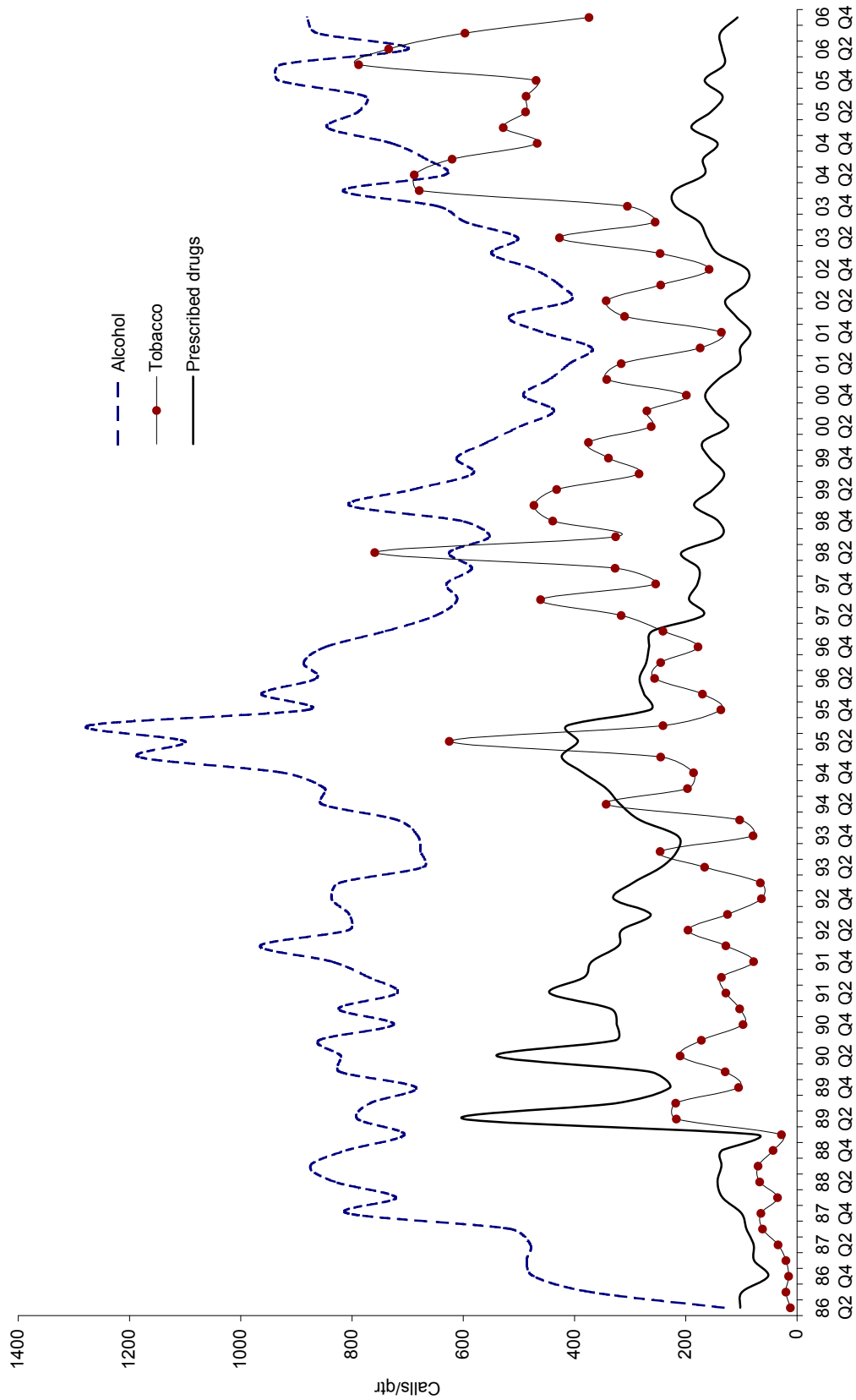


**Figure A-2**  
**Annual designer drug, prescribed drugs, tobacco and other drug related telephone calls, 1986 - 2006**



Note: 1986 refers to March to December.

**Figure A-3**  
**Quarterly alcohol, tobacco and prescribed drug related telephone calls, June quarter 1986 - December quarter 2006**



## Methodology

The Alcohol & Drug Information Service (ADIS) classifies calls by the major purpose of the call, ie counselling or information only. The time series data in this report refers to counselling only calls as this is believed to measure the extent of problems that people are experiencing due to the use of specific types of drugs.

Non identifying data are routinely collected for each call, such as the type of drug mentioned, type of caller, age and sex of caller, caller's postcode of residence and outcome of the call. The data contained in this publication has been extracted from monthly reports on the number of drug related telephone calls received by both ADIS and the Parent Drug Information Service (PDIS).

Since the inception of ADIS in March 1986 there has been a number of enhancements in data collection which determine the level of detail available. Enhancements in 1996 and at the end of August 1999 provide improved information about additional drugs. It should be noted that as data were not collected for some specific drugs in the period 1986 to 1995, these calls were recorded as 'other drugs'.

This publication contains data for calls where the primary drug of concern was either alcohol, tobacco, cannabis, opioids (eg heroin, narcotic analgesics, methadone & non narcotic analgesics), designer drugs (eg hallucinogens, ecstasy and LSD), psychostimulants (eg amphetamines, methamphetamines, dexamphetamine and cocaine), other drugs (eg volatile substances, anabolic steroids, polydrug abuse, opioid abstinence and alcohol abstinence) and prescribed drugs (eg major tranquillisers, minor tranquillisers and anti-depressants).

The report also presents aggregate data for three broad groups:

- licit drugs (eg alcohol, tobacco, narcotic analgesics, non narcotic analgesics, methadone, buprenorphine, prescribed drugs);
- illicit drugs (cannabis, heroin, morphine, codeine, dextromoramide, designer drugs, psychostimulants, volatile substances, steroids, polydrug use and unspecified drugs); and
- all drugs (licit drugs and illicit drugs).

Note: The totals in this publication do not reflect annual total of all calls, as ADIS also receives non user and information calls, which do not involve current drug use.

This publication is available online at  
<http://www.dao.health.wa.gov.au>